

TRANSTECNO[®]
the modular gearmotor

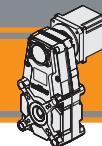
BLFT

BLFT



Motoriduttori brushless CC pendolari
Brushless DC helical parallel gearmotors

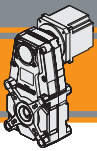




Indice	Index	Pag. Page
Caratteristiche tecniche	<i>Technical features</i>	BD2
Designazione	<i>Classification</i>	BD3
Simbologia	<i>Symbols</i>	BD3
Lubrificazione e temperatura	<i>Lubrication and temperature</i>	BD3
Carichi radiali	<i>Radial loads</i>	BD4
FT105 con motore brushless BLS022.240	<i>FT105 with BLS022.240 brushless motor</i>	BD5
FT105 con motore brushless BLS043.240	<i>FT105 with BLS043.240 brushless motor</i>	BD6
FT146 con motore brushless BLS043.240	<i>FT146 with BLS043.240 brushless motor</i>	BD7
FT146 con motore brushless BL070.240	<i>FT146 with BL070.240 brushless motor</i>	BD8
FT146 con motore brushless BL070.480	<i>FT146 with BL070.480 brushless motor</i>	BD8
FT146 con motore brushless BL070.48.80	<i>FT146 with BL070.48.80 brushless motor</i>	BD9
FT146 con motore brushless BL140.480	<i>FT146 with BL140.480 brushless motor</i>	BD10
FT176 con motore brushless BL070.480	<i>FT176 with BL070.480 brushless motor</i>	BD11
FT176 con motore brushless BL070.48.80	<i>FT176 with BL070.48.80 brushless motor</i>	BD12
FT176 con motore brushless BL140.480	<i>FT176 with BL140.480 brushless motor</i>	BD13
FT176 con motore brushless BL200.48.95	<i>FT176 with BL200.48.95 brushless motor</i>	BD14
FT176 con motore brushless BL210.480	<i>FT176 with BL210.480 brushless motor</i>	BD15
FT176 con motore brushless BL400.48.120	<i>FT176 with BL400.48.120 brushless motor</i>	BD16
FT196 con motore brushless BL210.480	<i>FT196 with BL210.480 brushless motor</i>	BD17
FT196 con motore brushless BL200.48.95	<i>FT196 with BL200.48.95 brushless motor</i>	BD18
FT196 con motore brushless BL400.48.120	<i>FT196 with BL400.48.120 brushless motor</i>	BD19
Dati tecnici	<i>Technical data</i>	BD20
Dimensioni FT con flange motore AS	<i>FT dimensions with motor flanges AS</i>	BD22

Questa sezione annulla e sostituisce ogni precedente edizione o revisione. Qualora questa sezione non Vi sia giunta in distribuzione controllata, l'aggiornamento dei dati ivi contenuto non è assicurato. **In tal caso la versione più aggiornata è disponibile sul nostro sito internet www.transtecno.com**

This section replaces any previous edition and revision. If you obtained this catalogue other than through controlled distribution channels, the most up to date content is not guaranteed. In this case the latest version is available on our web site www.transtecno.com



Motoriduttori brushless CC pendolari Brushless DC helical parallel gearmotors

Caratteristiche tecniche

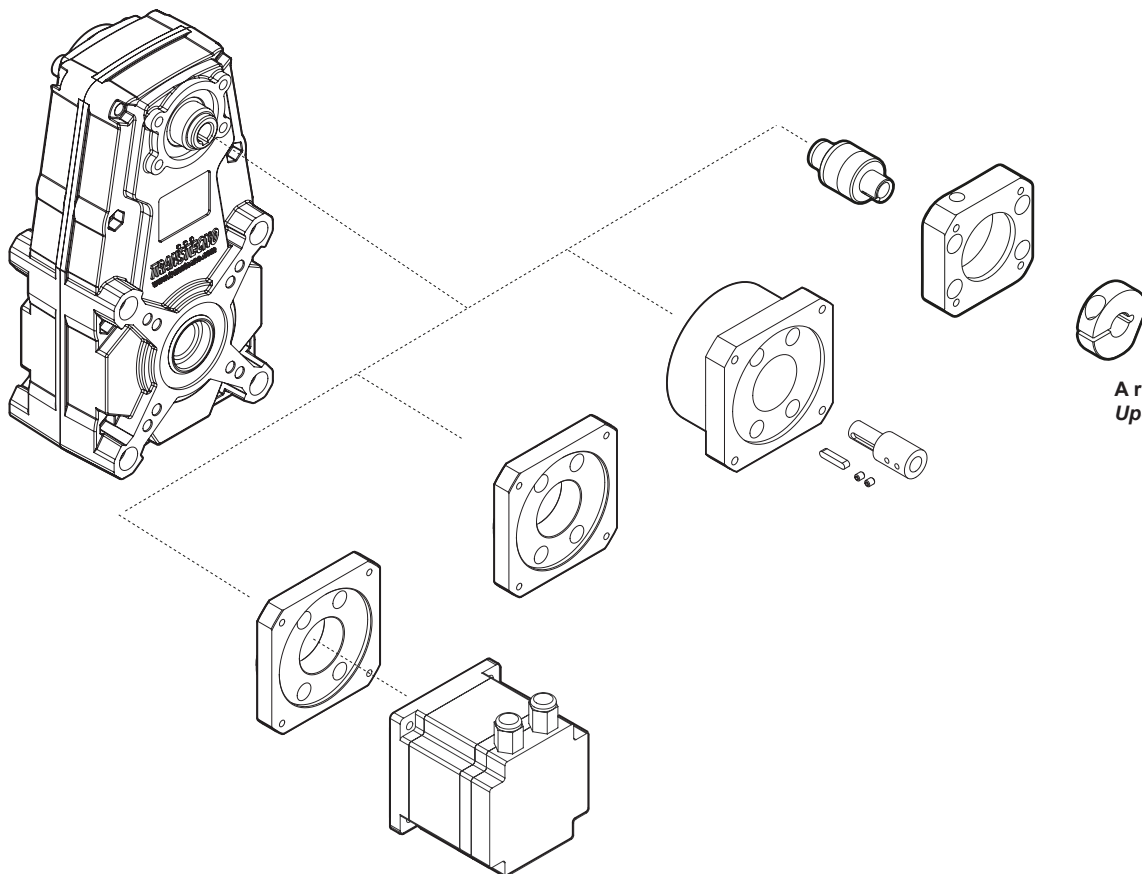
Technical features

Le caratteristiche principali dei motoriduttori brushless CC pendolari della serie FT sono:

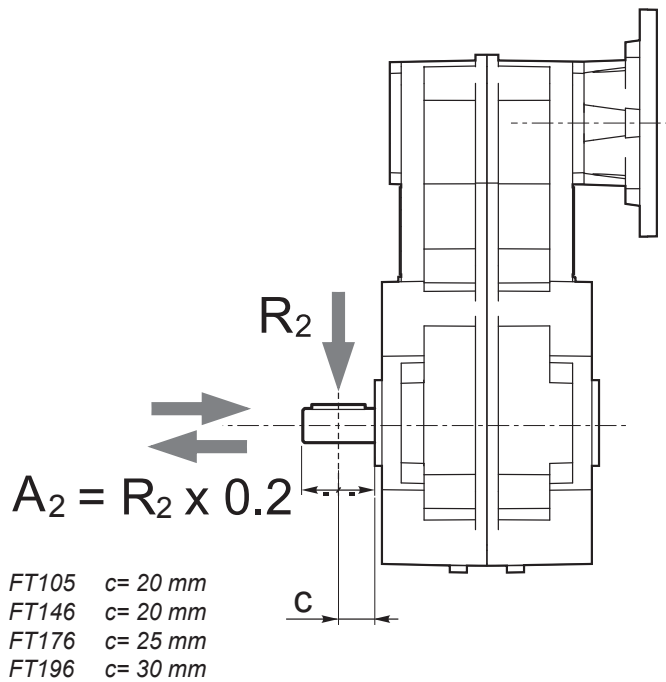
- Alimentazione in bassa tensione 24/36/48 Vcc
- Motore protezione IP55
- Coppie motori disponibili da 0.22 Nm a 4.2 Nm
- Lubrificazione permanente con olio sintetico
- Carcassa in pressofusione di alluminio
- Ingranaggi cilindrici a denti elicoidali, induriti e rettificati
- Disponibili anche nella versione con solo riduttore, sia con flangia di entrata standard che con flangia e manicotto dedicati

The main features of FT brushless DC helical parallel gearmotors range are:

- Low voltage power supply 24/36/48 Vdc
- Motor protection IP55
- Motor torque ratings available from 0.22 Nm up to 4.2 Nm
- Permanent synthetic oil long life lubrication
- Die-cast aluminium housing
- Ground-hardened helical gears
- Gearbox only version also available, with either standard input flange or customized flange and coupling



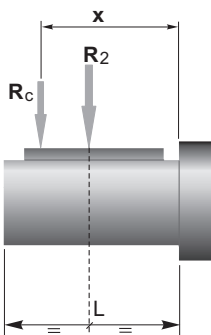
A richiesta
Upon request



n ₂ [min ⁻¹]	R ₂ [N]			
	FT105	FT146	FT176	FT196
200	800	1400	2000	2200
170	900	1600	2200	2400
140	1000	1800	2400	2600
120	1100	2000	2600	2800
100	1300	2200	2800	3100
70	1500	2500	3000	3500
50	1600	2600	3250	3750
40	1700	2700	3500	4000
30	1850	2850	4000	4600
20	2000	3000	4500	5500
10	2000	3000	5000	7000
5	2000	3000	5000	7000

Quando il carico radiale risultante non è applicato sulla mezza-
ria dell'albero occorre calcolare quello effettivo con la seguente
formula:

When the resulting radial load is not applied on the centre line
of the shaft it is necessary to calculate the effective load with the
following formula:



	FT105	FT146	FT176	FT196
a	82	82,5	115	132
b	62	62,5	90	102
R _{2MAX}	2000	3000	5000	7000

$$R_c = \frac{R_2 \cdot a}{(b + x)} \leq R_{2MAX}$$

$$R \leq R_c$$

a, b = valori riportati nella tabella
a, b = values given in the table



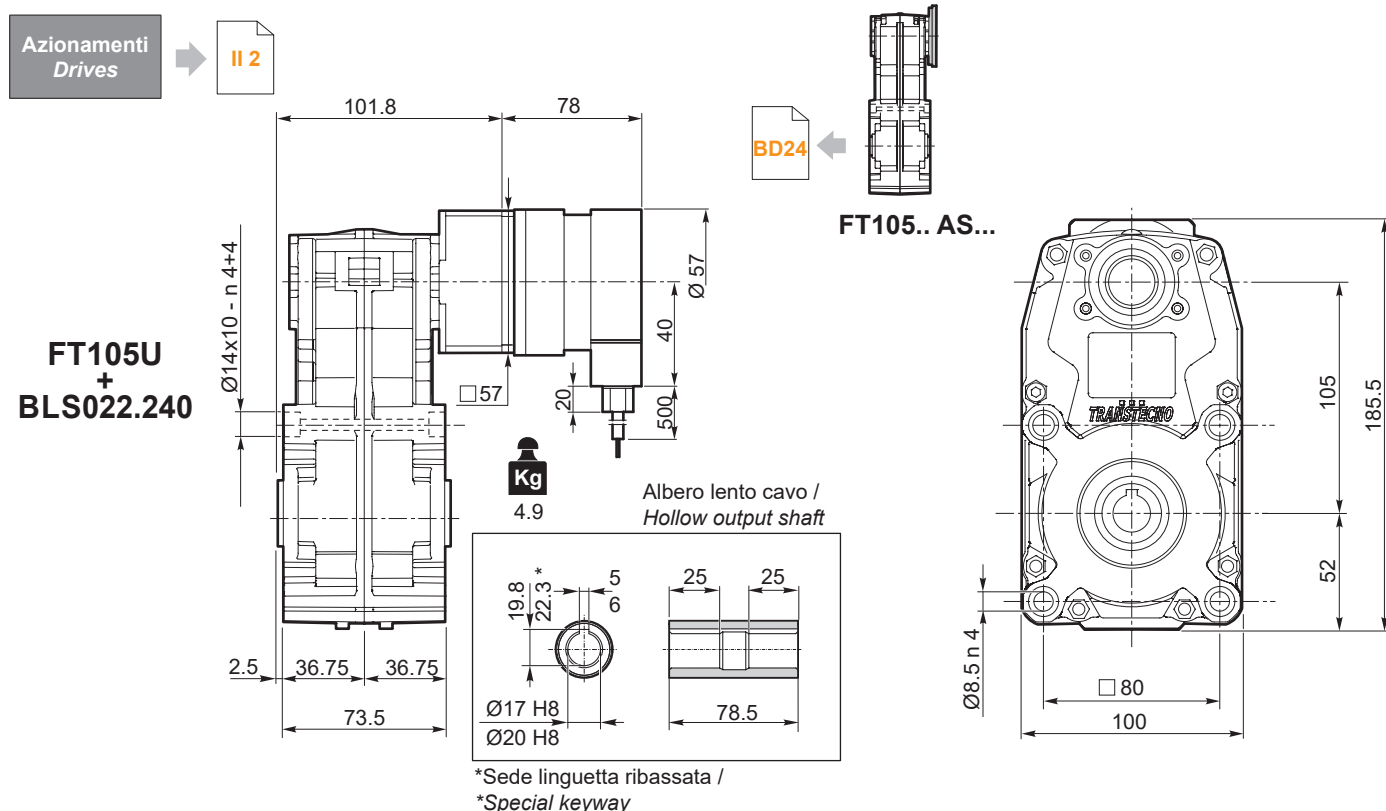
FT105		BLS022.240													
		24V							36V						
		n _{2MIN} [rpm]			n _{2MAX} [rpm]				n _{1MAX} [rpm]	n _{2MIN} [rpm]			n _{2MAX} [rpm]		
ir	Ns	M ₂ [Nm]	sf		M ₂ [Nm]	sf		M ₂ [Nm]		sf		M ₂ [Nm]	sf		
20.57	3	14.6	4.3	10.8	146	4.3	7.3	3000	19.4	4.3	10.8	194	4.3	6.5	4000
33.32		9.0	6.9	8.3	90	6.9	5.7		12.0	6.9	8.3	120	6.9	5.0	
44.36		6.8	9.2	8.1	68	9.2	5.5		9.0	9.2	8.1	90	9.2	4.9	
54.87		5.5	11	6.6	55	11	4.5		7.3	11	6.6	73	11	4.0	
71.84		4.2	15	5.0	42	15	3.4		5.6	15	5.0	56	15	3.0	
77.07		3.9	16	4.7	39	16	3.2		5.2	16	4.7	52	16	2.8	
88.87		3.4	18	4.1	34	18	2.8		4.5	18	4.1	45	18	2.4	
124.81		2.4	26	2.9	24	26	2.0		3.2	26	2.9	32	26	1.7	
181.35		1.7	38	2.0	17	38	1.4		2.2	38	2.0	22	38	1.2	
224.32		1.3	46	1.6	13	46	1.1		1.8	46	1.6	18	46	1.0	
315.05		1.0	65	1.1	10	65	0.8		1.3	65	1.1	13	64	0.7	
368.19		0.8	75	1.0	8.1	72	0.7		1.1	75	1.0	11	64	0.7	
534.98	0.6	105	0.7	5.6	72	0.7	0.7	105	0.7	7.5	64	0.7			
661.76	0.5	105	0.7	4.5	72	0.7	0.6	105	0.7	6.0	64	0.7			
929.40	0.3	105	0.7	3.2	72	0.7	0.4	105	0.7	4.3	64	0.7			

NOTA: per servizio continuo o altamente intermittente, contattare il servizio tecnico

NOTE: for continuous or highly intermittent duty, please contact our technical service

Attenzione: superamento della coppia nominale supportata dal riduttore per servizio S1. Contattare il ns. servizio tecnico
Attention: rated torque withstood by gear reducer for service in S1 is exceeded. Please, contact our technical office.

Tipo Type	Numero di poli Number of poles	Numero di fasi Number of phase	Tensione Rated voltage [V]	Numero di giri Rated speed [rpm]	Coppia nominale Rated torque [Nm]	Potenza nominale Rated power [W]
BLS022.240	4	3	36	4000	0.22	92
			24	3000		70
Tipo Type	Coppia massima Peak torque [Nm]	Corrente nominale Rated current [A]	Resistenza Resistance [Ω]	Induttanza Inductance [mH]	Corrente massima Peak current [A]	Peso Weight [kg]
BLS022.240	0.44	3.7	0.64	3.1	7.4	0.72



*Sede linguetta ribassata /
*Special keyway

FT IP 55



Motoriduttori brushless CC pendolari Brushless DC helical parallel gearmotors

FT105 con motore brushless CC

FT105 with brushless DC motor

FT105		BLS043.240													
		24V							36V						
		n _{2MIN} [rpm]			n _{2MAX} [rpm]				n _{1MAX} [rpm]	n _{2MIN} [rpm]			n _{2MAX} [rpm]		
ir	Ns	M ₂ [Nm]	sf	M ₂ [Nm]	sf	M ₂ [Nm]	sf	M ₂ [Nm]		sf	M ₂ [Nm]	sf	M ₂ [Nm]	sf	
20.57	3	14.6	8.3	5.5	146	8.3	3.8	3000	19.4	8.3	5.5	194	8.3	3.3	4000
33.32		9.0	13	4.3	90	13	2.9		12.0	13	4.3	120	13	2.6	
44.36		6.8	18	4.2	68	18	2.8		9.0	18	4.2	90	18	2.5	
54.87		5.5	22	3.4	55	22	2.3		7.3	22	3.4	73	22	2.0	
71.84		4.2	29	2.6	42	29	1.7		5.6	29	2.6	56	29	1.5	
77.07		3.9	31	2.4	39	31	1.6		5.2	31	2.4	52	31	1.4	
88.87		3.4	36	2.1	34	36	1.4		4.5	36	2.1	45	36	1.2	
124.81		2.4	50	1.5	24	50	1.0		3.2	50	1.5	32	50	0.9	
181.35		1.7	73	1.0	17	72	0.7		2.2	73	1.0	22	64	0.7	
224.32		1.3	91	0.8	13	72	0.7		1.8	91	0.8	18	64	0.7	
315.05		1.0	105	0.7	10	72	0.7		1.3	105	0.7	13	64	0.7	
368.19		0.8	105	0.7	8.1	72	0.7		1.1	105	0.7	11	64	0.7	
534.98		0.6	105	0.7	5.6	72	0.7		0.7	105	0.7	7.5	64	0.7	
661.76		0.5	105	0.7	4.5	72	0.7		0.6	105	0.7	6.0	64	0.7	
929.40	0.3	105	0.7	3.2	72	0.7	0.4	105	0.7	4.3	64	0.7			

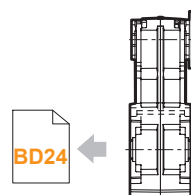
NOTA: per servizio continuo o altamente intermittente, contattare il servizio tecnico

NOTE: for continuous or highly intermittent duty, please contact our technical service

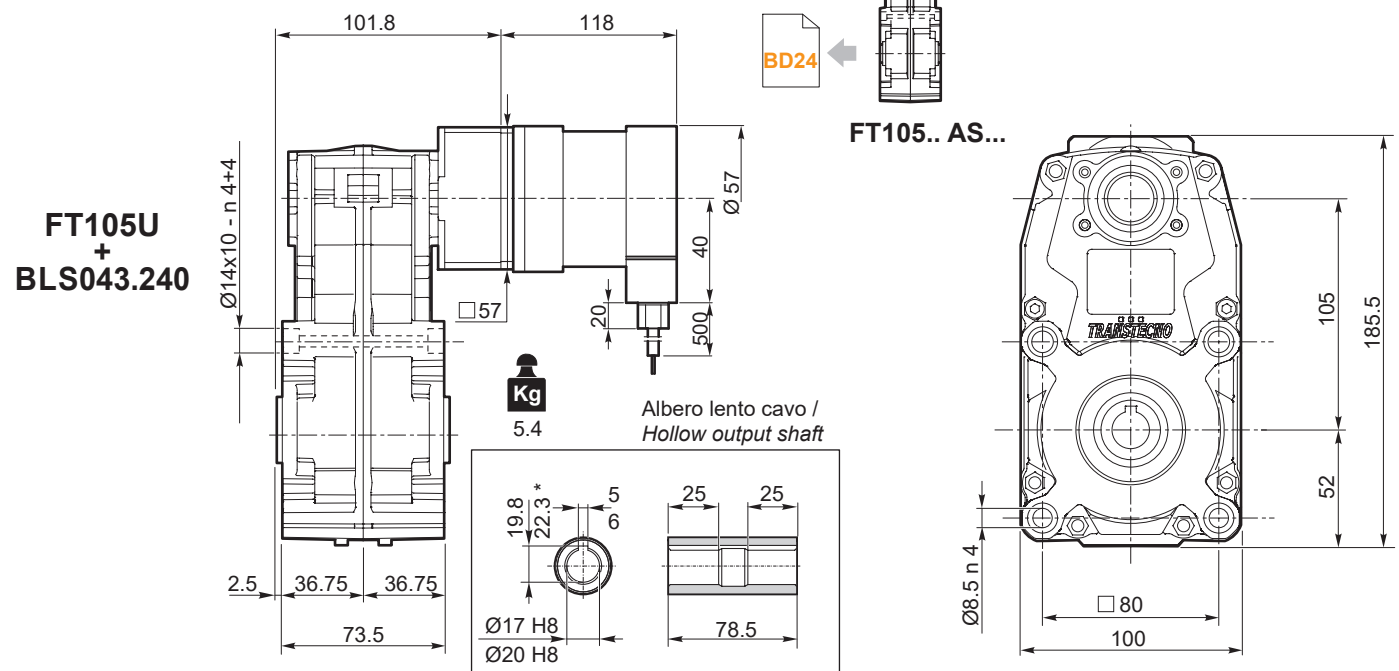
Attenzione: superamento della coppia nominale supportata dal riduttore per servizio S1. Contattare il ns. servizio tecnico
Attention: rated torque withstood by gear reducer for service in S1 is exceeded. Please, contact our technical office.

Tipo Type	Numero di poli Number of poles	Numero di fasi Number of phase	Tensione Rated voltage [V]	Numero di giri Rated speed [rpm]	Coppia nominale Rated torque [Nm]	Potenza nominale Rated power [W]
BLS043.240	4	3	36	4000	0.43	180
			24	3000		130
Tipo Type	Coppia massima Peak torque [Nm]	Corrente nominale Rated current [A]	Resistenza Resistance [Ω]	Induttanza Inductance [mH]	Corrente massima Peak current [A]	Peso Weight [kg]
BLS043.240	0.86	6.8	0.35	1	13.6	1.25

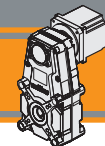
Azionamenti Drives → II 2



FT105.. AS...



*Sede linguetta ribassata /
*Special keyway



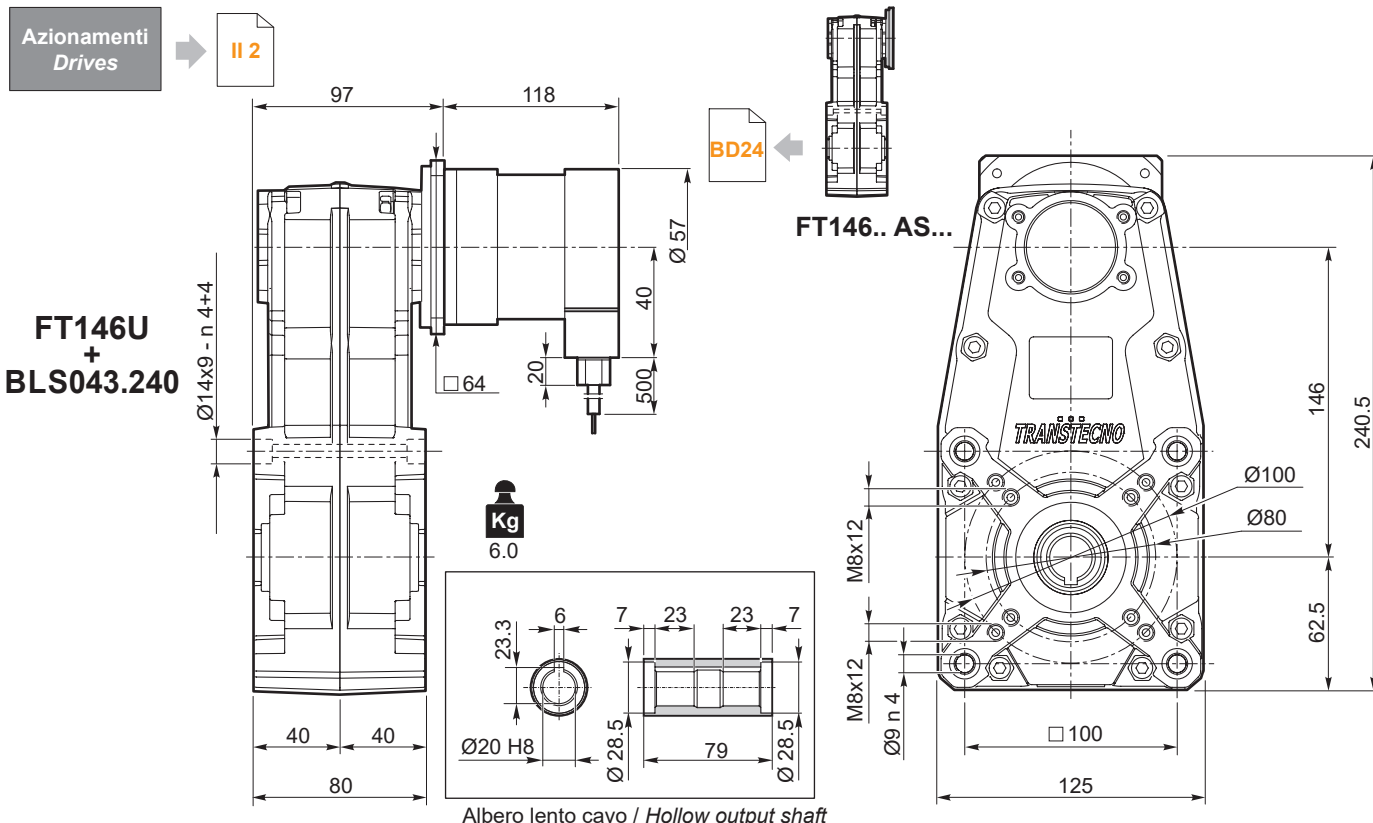
FT146	BLS043.240													
	24V							36V						
	n ₂ MIN [rpm]			n ₂ MAX [rpm]			n ₁ MAX [rpm]	n ₂ MIN [rpm]			n ₂ MAX [rpm]			n ₁ MAX [rpm]
ir	M ₂ [Nm]	sf	M ₂ [Nm]	sf		M ₂ [Nm]		sf		M ₂ [Nm]	sf			
18.75	16.0	7.6	12.1	160	7.6	8.2	3000	21.3	7.6	12.1	213	7.6	7.3	4000
22.89	13.1	9.3	9.9	131	9.3	6.7		17.5	9.3	9.9	175	9.3	5.9	
26.17	11.5	11	8.7	115	11	5.9		15.3	11	8.7	153	11	5.2	
28.26	10.6	11	8.1	106	11	5.5		14.2	11	8.1	142	11	4.8	
35.07	8.6	14	8.1	86	14	5.5		11.4	14	8.1	114	14	4.9	
39.44	7.6	16	7.1	76	16	4.8		10.1	16	7.1	101	16	4.2	
46.44	6.5	19	6.1	65	19	4.2		8.6	19	6.1	86	19	3.7	
52.86	5.7	21	5.4	57	21	3.7		7.6	21	5.4	76	21	3.2	
60.63	4.9	25	5.2	49	25	3.5		6.6	25	5.2	66	25	3.1	
70.00	4.3	28	4.5	43	28	3.0		5.7	28	4.5	57	28	2.7	
74.02	4.1	30	4.2	41	29.9	2.9		5.4	30	4.2	54	30	2.5	
84.63	3.5	34	3.7	35	34	2.5		4.7	34	3.7	47	34	2.2	
95.61	3.1	39	3.3	31	39	2.2		4.2	39	3.3	42	39	2.0	
113.40	2.6	46	2.8	26	46	1.9		3.5	46	2.8	35	46	1.7	
133.45	2.2	54	2.3	22	54	1.6		3.0	54	2.3	30	54	1.4	
150.18	2.0	61	2.1	20	61	1.4		2.7	61	2.1	27	61	1.3	
160.43	1.9	65	2.1	19	65	1.4		2.5	65	2.1	25	65	1.3	
178.83	1.7	72	1.9	17	72	1.3		2.2	72	1.9	22	72	1.1	
195.85	1.5	79	1.7	15	79	1.2		2.0	79	1.7	20	79	1.0	
223.92	1.3	91	1.5	13	91	1.0		1.8	91	1.5	18	91	0.9	
236.83	1.3	96	1.4	13	96	1.0	1.7	96	1.4	17	96	0.9		
300.07	1.0	121	1.1	10.0	121	0.8	1.3	121	1.1	13	118	0.7		
397.38	0.8	161	0.9	7.5	134	0.7	1.0	161	0.9	10	118	0.7		

NOTA: per servizio continuo o altamente intermittente, contattare il servizio tecnico

NOTE: for continuous or highly intermittent duty, please contact our technical service

Attenzione: superamento della coppia nominale supportata dal riduttore per servizio S1. Contattare il ns. servizio tecnico
Attention: rated torque withstood by gear reducer for service in S1 is exceeded. Please, contact our technical office.

Tipo Type	Numero di poli Number of poles	Numero di fasi Number of phase	Tensione Rated voltage [V]	Numero di giri Rated speed [rpm]	Coppia nominale Rated torque [Nm]	Potenza nominale Rated power [W]
BLS043.240	4	3	36	4000	0.43	180
			24	3000		130
Tipo Type	Coppia massima Peak torque [Nm]	Corrente nominale Rated current [A]	Resistenza Resistance [Ω]	Induttanza Inductance [mH]	Corrente massima Peak current [A]	Peso Weight [kg]
BLS043.240	0.86	6.8	0.35	1	13.6	1.25



Albero lento cavo / Hollow output shaft

FT IP 55



Motoriduttori brushless CC pendolari Brushless DC helical parallel gearmotors

FT146 con motore brushless CC

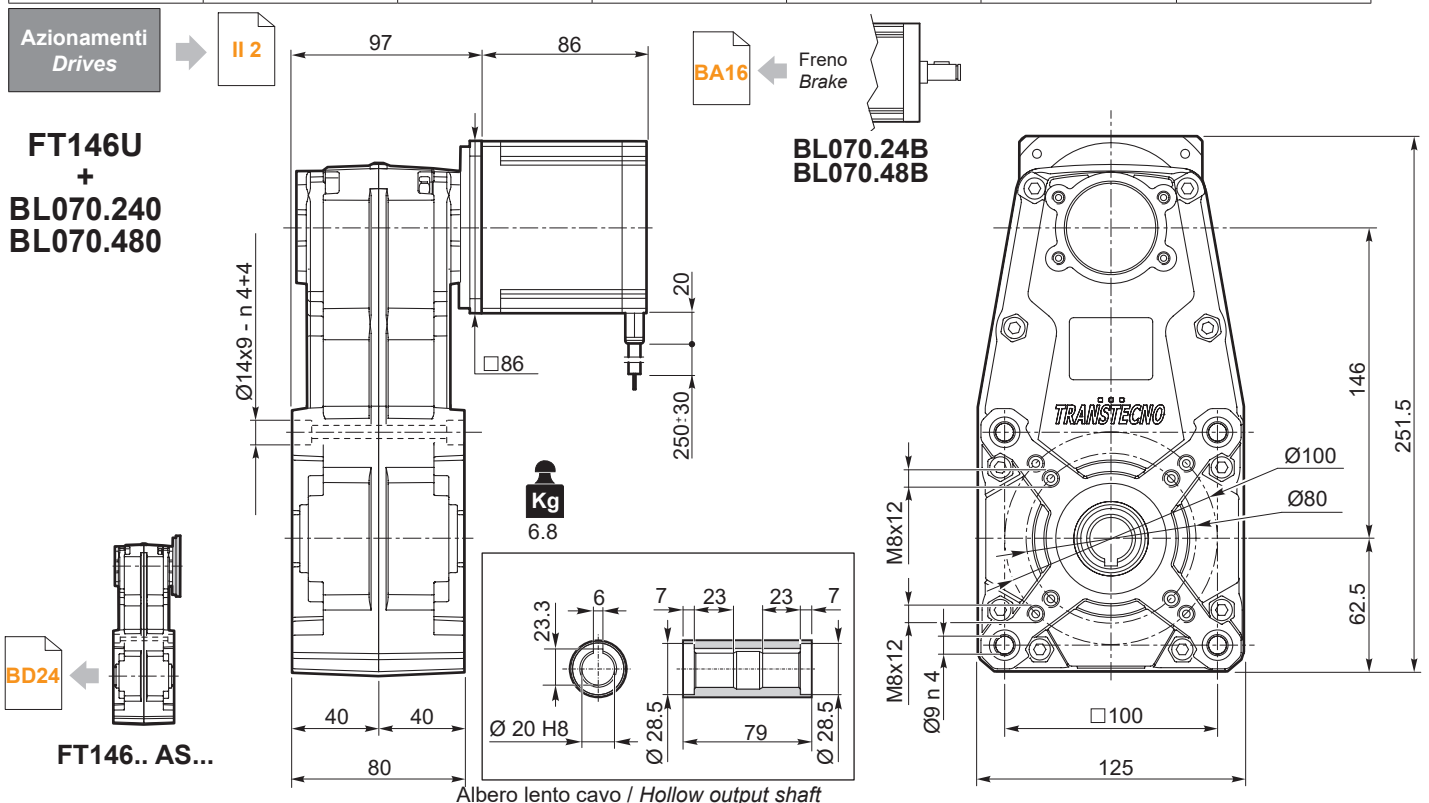
FT146 with brushless DC motor

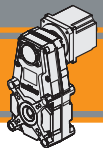
FT146	BL070.240 / BL070.24B / BL070.480 / BL070.48B						
	24V / 48V						
	ir	n ₂ MIN [rpm]			n ₂ MAX [rpm]		
M ₂ [Nm]		sf		M ₂ [Nm]	sf		
18.75	16.0	12	7.5	160	12	5.1	3000
22.89	13.1	15	6.1	131	15	4.1	
26.17	11.5	17	5.3	115	17	3.6	
28.26	10.6	19	4.9	106	19	3.4	
35.07	8.6	23	5.0	86	23	3.4	
39.44	7.6	26	4.3	76	26	2.9	
46.44	6.5	31	3.8	65	31	2.6	
52.86	5.7	35	3.3	57	35	2.2	
60.63	4.9	40	3.2	49	40	2.2	
70.00	4.3	46	2.7	43	46	1.9	
74.02	4.1	49	2.6	41	49	1.8	
84.63	3.5	56	2.3	35	56	1.5	
95.61	3.1	63	2.0	31	63	1.4	
113.40	2.6	75	1.7	26	75	1.1	
133.45	2.2	88	1.4	22	88	1.0	
150.18	2.0	99	1.3	20	99	0.9	
160.43	1.9	106	1.3	19	106	0.9	
178.83	1.7	118	1.2	17	118	0.8	
195.85	1.5	129	1.1	15	129	0.7	
223.92	1.3	147	0.9	13	134	0.7	
236.83	1.3	156	0.9	13	134	0.7	
300.07	1.0	170	0.8	10	134	0.7	
397.38	0.8	170	0.8	7.5	134	0.7	

NOTA: per servizio continuo o altamente intermittente, contattare il servizio tecnico **NOTE:** for continuous or highly intermittent duty, please contact our technical service

Attenzione: superamento della coppia nominale supportata dal riduttore per servizio S1. Contattare il ns. servizio tecnico
Attention: rated torque withstood by gear reducer for service in S1 is exceeded. Please, contact our technical office.

Tipo Type	Numero di poli Number of poles	Numero di fasi Number of phase	Tensione Rated voltage [V]	Numero di giri Rated speed [rpm]	Coppia nominale Rated torque [Nm]	Potenza nominale Rated power [W]
BL070.240 BL070.24B	8	3	24	3000	0.7	220
BL070.480 BL070.48B	8	3	48	3000	0.7	220
Tipo Type	Coppia massima Peak torque [Nm]	Corrente nominale Rated current [A]	Resistenza Resistance [Ω]	Induttanza Inductance [mH]	Corrente massima Peak current [A]	Peso Weight [kg]
BL070.240 BL070.24B	1.4	13	0.091	0.23	26	2.1
BL070.480 BL070.48B	1.4	6.5	0.34	1.0	13	2.1





FT146	BL070.48.80													
	24V						48V							
	n _{2MIN} [rpm]			n _{2MAX} [rpm]			n _{1MAX} [rpm]	n _{2MIN} [rpm]			n _{2MAX} [rpm]			n _{1MAX} [rpm]
ir	M ₂ [Nm]	sf	M ₂ [Nm]	sf	M ₂ [Nm]	sf		M ₂ [Nm]	sf	M ₂ [Nm]	sf			
18.75	13	12	7.5	133	12	5.1	2500	21	12	7.5	213	12	4.5	4000
22.89	11	15	6.1	109	15	4.1		17	15	6.1	175	15	3.7	
26.17	9.6	17	5.3	96	17	3.6		15	17	5.3	153	17	3.2	
28.26	8.8	19	4.9	88	19	3.4		14	19	4.9	142	19	3.0	
35.07	7.1	23	5.0	71	23	3.4		11	23	5.0	114	23	3.0	
39.44	6.3	26	4.4	63	26	3.0		10	26	4.4	101	26	2.7	
46.44	5.4	31	3.8	54	31	2.6		8.6	31	3.8	86	31	2.3	
52.86	4.7	35	3.3	47	35	2.2		7.6	35	3.3	76	35	2.0	
60.63	4.1	40	3.2	41	40	2.2		6.6	40	3.2	66	40	1.9	
70.00	3.6	46	2.7	36	46	1.9		5.7	46	2.7	57	46	1.6	
74.02	3.4	49	2.6	34	49	1.8		5.4	49	2.6	54	49	1.6	
84.63	3.0	56	2.3	30	56	1.5		4.7	56	2.3	47	56	1.4	
95.61	2.6	63	2.0	26	63	1.4		4.2	63	2.0	42	63	1.2	
113.40	2.2	75	1.7	22	75	1.1		3.5	75	1.7	35	75	1.0	
133.45	1.9	88	1.4	19	88	1.0		3.0	88	1.4	30	88	0.9	
150.18	1.7	99	1.3	17	99	0.9		2.7	99	1.3	27	99	0.8	
160.43	1.6	106	1.3	16	106	0.9		2.5	106	1.3	25	106	0.8	
178.83	1.4	118	1.2	14	118	0.8		2.2	118	1.2	22	118	0.7	
195.85	1.3	129	1.1	13	129	0.7		2.0	129	1.1	20	118	0.7	
223.92	1.1	147	0.9	11	129	0.7		1.8	147	0.9	18	118	0.7	
236.83	1.06	156	0.9	10.6	129	0.7	1.7	156	0.9	17	118	0.7		
300.07	0.83	197	0.7	8.3	129	0.7	1.3	197	0.7	13	118	0.7		
397.38	0.63	197	0.7	6.3	129	0.7	1.0	197	0.7	10	118	0.7		

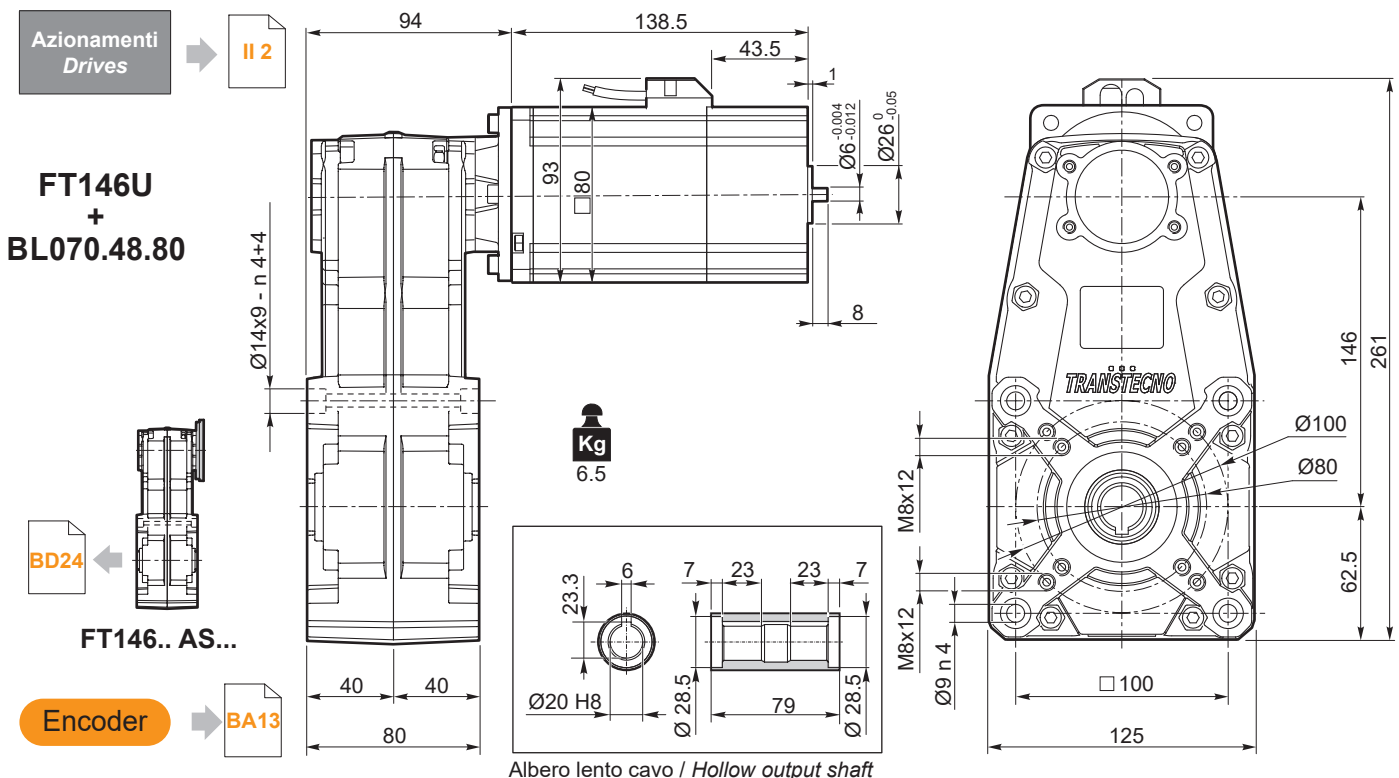
NOTA: per servizio continuo o altamente intermittente, contattare il servizio tecnico

NOTE: for continuous or highly intermittent duty, please contact our technical service

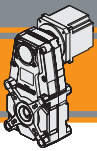
Attenzione: superamento della coppia nominale supportata dal riduttore per servizio S1. Contattare il ns. servizio tecnico
Attention: rated torque withstood by gear reducer for service in S1 is exceeded. Please, contact our technical office.

Tipo Type	Numero di poli Number of poles	Numero di fasi Number of phase	Tensione nominale Rated voltage [V]	Velocità nominale Rated speed [rpm]	Coppia nominale Rated torque [Nm]	Potenza nominale Rated power [W]	Coppia di picco Peak torque [Nm]
BL070.48.80	8	3	48	4350	0.7	320	1.4
			24	2500		185	

Tipo Type	Corrente nominale Rated current [A]	Corrente di picco Peak current [A]	Resistenza fase-fase Line to line resistance [Ω]	Induttanza fase-fase Line to line inductance [mH]	Costante di coppia Torque constant [Nm/A]	Costante FCEM Back EMF [V/kRPM]	Inerzia rotore Rotor inertia [gcm ²]	Peso Weight [kg]
BL070.48.80	12	36	0.072	0.304	0.1	6.15	1000	1.8



FT IP 55



Motoriduttori brushless CC pendolari Brushless DC helical parallel gearmotors

FT146 con motore brushless CC

FT146 with brushless DC motor

FT146	BL140.480						n _{1MAX} [rpm]
	48V						
	ir	n _{2MIN} [rpm]			n _{2MAX} [rpm]		
M ₂ [Nm]		sf		M ₂ [Nm]	sf		
18.75	16.0	25	3.7	160	25	2.5	3000
22.89	13.1	30	3.1	131	30	2.1	
26.17	11.5	34	2.7	115	34	1.8	
28.26	10.6	37	2.5	106	37	1.7	
35.07	8.6	46	2.5	86	46	1.7	
39.44	7.6	53	2.2	76	53	1.5	
46.44	6.5	61	1.9	65	61	1.3	
52.86	5.7	70	1.7	57	70	1.1	
60.63	4.9	80	1.6	49	80	1.1	
70.00	4.3	92	1.4	43	92	0.9	
74.02	4.1	97	1.3	41	97	0.9	
84.63	3.5	111	1.1	35	111	0.8	
95.61	3.1	126	1.0	31	122	0.7	
113.40	2.6	149	0.8	26	122	0.7	
133.45	2.2	158	0.8	22	122	0.7	
150.18	2.0	158	0.8	20	122	0.7	
160.43	1.9	170	0.8	19	134	0.7	
178.83	1.7	170	0.8	17	134	0.7	
195.85	1.5	170	0.8	15	134	0.7	
223.92	1.3	170	0.8	13	134	0.7	
236.83	1.3	170	0.8	13	134	0.7	
300.07	1.0	170	0.8	10	134	0.7	
397.38	0.8	170	0.8	7.5	134	0.7	

NOTA: per servizio continuo o altamente intermittente, contattare il servizio tecnico

NOTE: for continuous or highly intermittent duty, please contact our technical service

Attenzione: superamento della coppia nominale supportata dal riduttore per servizio S1. Contattare il ns. servizio tecnico
Attention: rated torque withstood by gear reducer for service in S1 is exceeded. Please, contact our technical office.

Tipo Type	Numero di poli Number of poles	Numero di fasi Number of phase	Tensione Rated voltage [V]	Numero di giri Rated speed [rpm]	Coppia nominale Rated torque [Nm]	Potenza nominale Rated power [W]
BL140.480	8	3	48	3000	1.4	440
Tipo Type	Coppia massima Peak torque [Nm]	Corrente nominale Rated current [A]	Resistenza Resistance [Ω]	Induttanza Inductance [mH]	Corrente massima Peak current [A]	Peso Weight [kg]
BL140.480	2.8	13	0.16	0.5	26	3.15

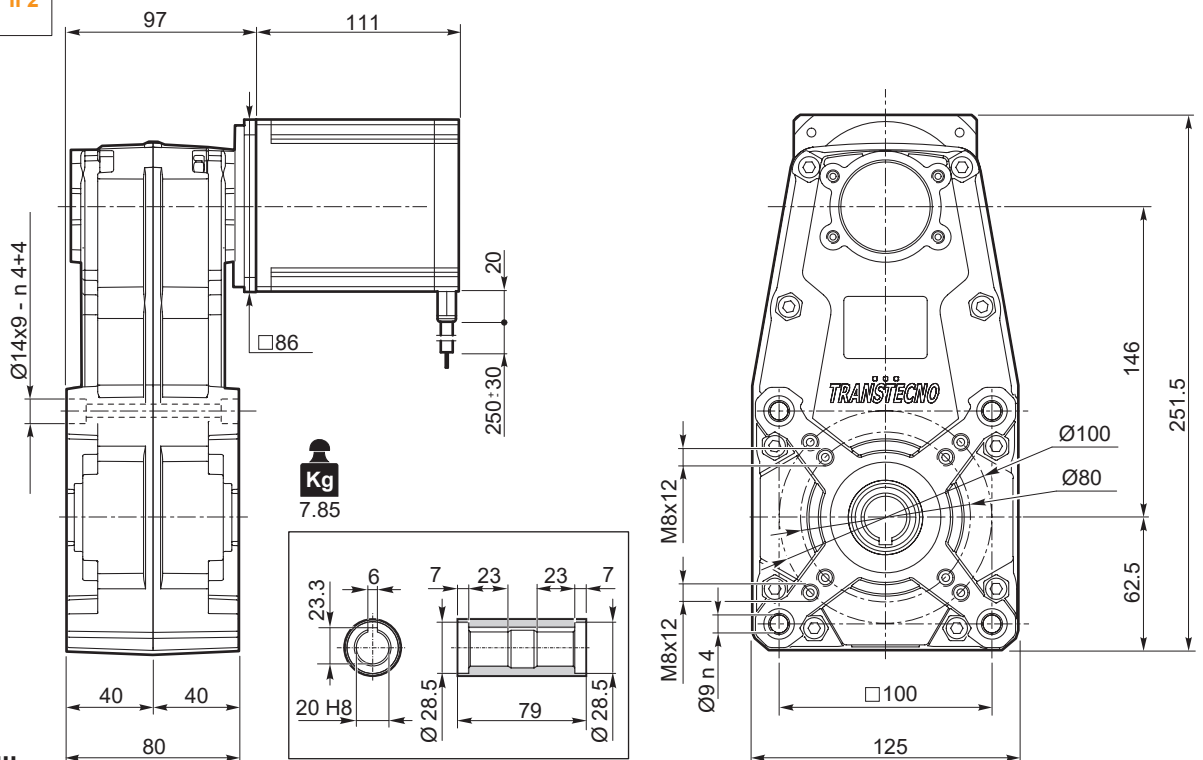
Azionamenti
Drives

II 2

FT146U
+
BL140.480

BD24

FT146.. AS...



Albero lento cavo / Hollow output shaft



Motoriduttori brushless CC pendolari Brushless DC helical parallel gearmotors

FT176 con motore brushless CC

FT176 with brushless DC motor

FT176	BL070.48.80													
	24V						48V							
	n _{2MIN} [rpm]			n _{2MAX} [rpm]			n _{1MAX} [rpm]	n _{2MIN} [rpm]			n _{2MAX} [rpm]		n _{1MAX} [rpm]	
M ₂ [Nm]	sf		M ₂ [Nm]	sf		M ₂ [Nm]		sf		M ₂ [Nm]	sf			
14.49	17	9.5	16.9	173	9.5	14.7	2500	28	9.5	16.9	276	9.5	10.1	3000
17.31	14	11.4	15.1	144	11.4	13.2		23	11.4	15.1	231	11.4	9.1	
20.97	12	13.8	13.3	119	13.8	11.6		19	13.8	13.3	191	13.8	8.0	
24.56	10	16.2	12.8	102	16.2	11.1		16	16.2	12.8	163	16.2	7.7	
29.33	8.5	19.3	10.7	85	19.3	9.3		14	19.3	10.7	136	19.3	6.4	
34.62	7.2	22.8	9.6	72	22.8	8.3		12	22.8	9.6	116	22.8	5.8	
37.50	6.7	24.7	8.9	67	24.7	7.7		11	24.7	8.9	107	24.7	5.3	
41.35	6.0	27	8.5	60	27	7.4		10	27	8.5	97	27	5.1	
44.79	5.6	29	8.2	56	29	7.1		8.9	29	8.2	89	29	4.9	
50.10	5.0	33	7.7	50	33	6.7		8.0	33	7.7	80	33	4.6	
54.26	4.6	36	7.4	46	36	6.4		7.4	36	7.4	74	36	4.4	
63.55	3.9	42	6.3	39	42	5.5		6.3	42	6.3	63	42	3.8	
75.90	3.3	50	5.8	33	50	5.0		5.3	50	5.8	53	50	3.5	
85.40	2.9	56	5.1	29	56	4.4		4.7	56	5.1	47	56	3.1	
89.60	2.8	59	5.5	28	59	4.7		4.5	59	5.5	45	59	3.3	
107.02	2.3	70	4.7	23	70	4.1		3.7	70	4.7	37	70	2.8	
126.92	2.0	84	4.1	20	84	3.6		3.2	84	4.1	32	84	2.5	
144.74	1.7	95	3.6	17	95	3.1		2.8	95	3.6	28	95	2.2	
163.25	1.5	107	3.2	15	107	2.8		2.5	107	3.2	25	107	1.9	
204.08	1.2	134	2.6	12	134	2.2		2.0	134	2.6	20	134	1.5	
215.11	1.2	142	2.4	12	142	2.1		1.9	142	2.4	19	142	1.5	
276.68	0.9	182	1.9	9	182	1.6		1.4	182	1.9	14	182	1.1	
303.29	0.8	200	1.7	8	200	1.5		1.3	200	1.7	13	200	1.0	
390.11	0.6	257	1.3	6	257	1.2		1.0	257	1.3	10	257	0.8	

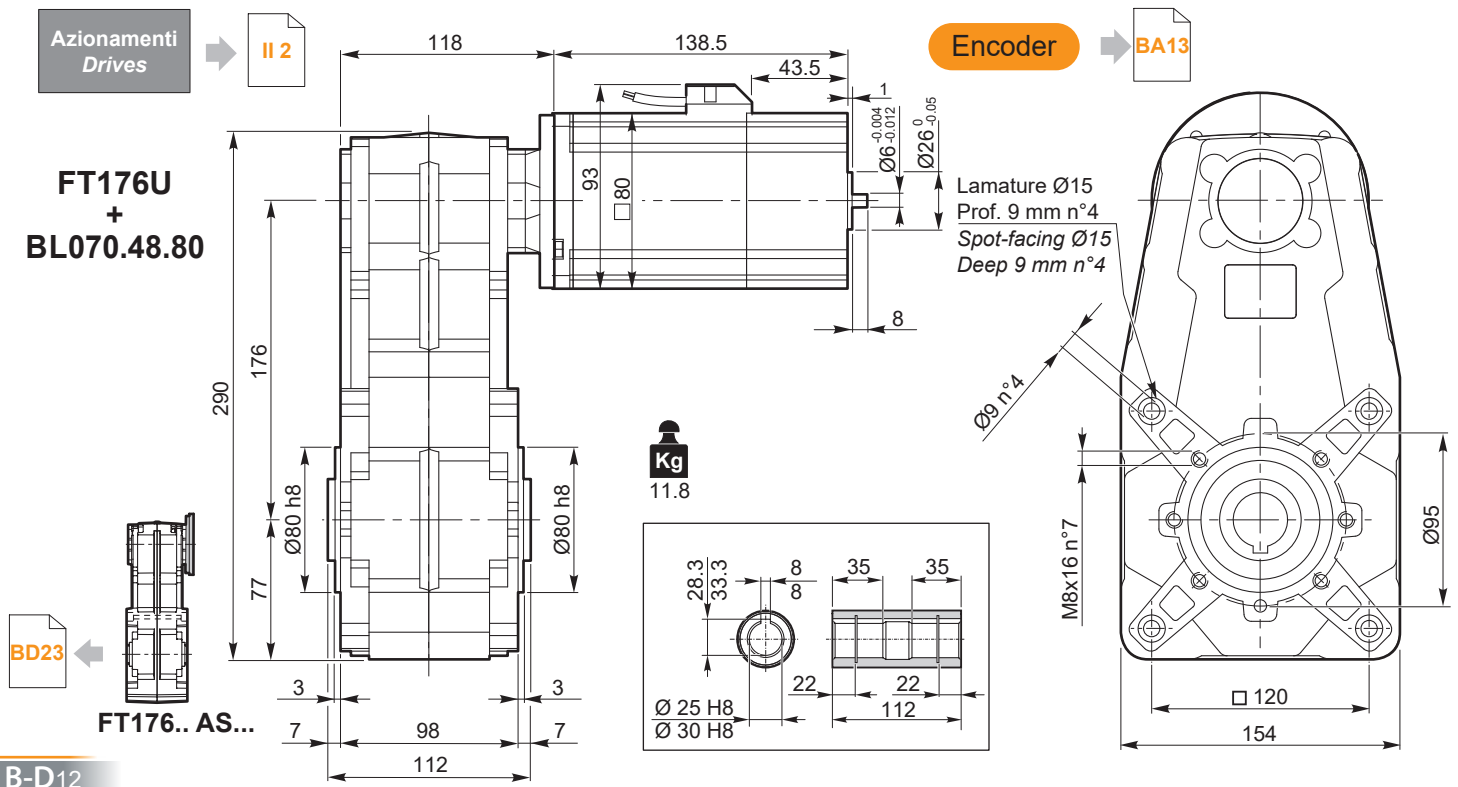
NOTA: per servizio continuo o altamente intermittente, contattare il servizio tecnico

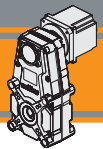
NOTE: for continuous or highly intermittent duty, please contact our technical service

Attenzione: superamento della coppia nominale supportata dal riduttore per servizio S1. Contattare il ns. servizio tecnico
Attention: rated torque withstood by gear reducer for service in S1 is exceeded. Please, contact our technical office.

Tipo Type	Numero di poli Number of poles	Numero di fasi Number of phase	Tensione nominale Rated voltage [V]	Velocità nominale Rated speed [rpm]	Coppia nominale Rated torque [Nm]	Potenza nominale Rated power [W]	Coppia di picco Peak torque [Nm]
BL070.48.80	8	3	48	4350	0.7	320	1.4
			24	2500		185	

Tipo Type	Corrente nominale Rated current [A]	Corrente di picco Peak current [A]	Resistenza fase-fase Line to line resistance [Ω]	Induttanza fase-fase Line to line inductance [mH]	Costante di coppia Torque constant [Nm/A]	Costante FCEM Back EMF [V/kRPM]	Inerzia rotore Rotor inertia [gcm ²]	Peso Weight [kg]
BL070.48.80	12	36	0.072	0.304	0.1	6.15	1000	1.8





FT176	BL140.480					
	48V					
	ir	n ₂ MIN [rpm]			n ₂ MAX [rpm]	
M ₂ [Nm]		sf		M ₂ [Nm]	sf	n ₁ MAX [rpm]
14.49	21	19	8.4	207	19	5.7
17.31	17	23	7.6	173	23	5.1
20.97	14	28	6.7	143	28	4.5
24.56	12	32	6.4	122	32	4.3
29.33	10	39	5.4	102	39	3.6
34.62	8.7	46	4.8	87	46	3.3
37.50	8.0	49	4.4	80	49	3.0
41.35	7.3	54	4.2	73	54	2.9
44.79	6.7	59	4.1	67	59	2.8
50.10	6.0	66	3.8	60	66	2.6
54.26	5.5	71	3.7	55	71	2.5
63.55	4.7	84	3.2	47	84	2.1
75.90	4.0	100	2.9	40	100	2.0
85.40	3.5	112	2.6	35	112	1.7
89.60	3.3	118	2.7	33	118	1.9
107.02	2.8	141	2.4	28	141	1.6
126.92	2.4	167	2.1	24	167	1.4
144.74	2.1	190	1.8	21	190	1.2
163.25	1.8	215	1.6	18	215	1.1
204.08	1.5	269	1.3	15	269	0.9
215.11	1.4	283	1.2	14	283	0.8
276.68	1.1	364	0.9	11	293	0.8
303.29	1.0	399	0.9	10	293	0.8
390.11	0.8	431	0.8	7.7	293	0.8

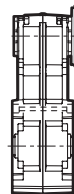
NOTA: per servizio continuo o altamente intermittente, contattare il servizio tecnico

NOTE: for continuous or highly intermittent duty, please contact our technical service

Attenzione: superamento della coppia nominale supportata dal riduttore per servizio S1. Contattare il ns. servizio tecnico
Attention: rated torque withstood by gear reducer for service in S1 is exceeded. Please, contact our technical office.

Tipo Type	Numero di poli Number of poles	Numero di fasi Number of phase	Tensione Rated voltage [V]	Numero di giri Rated speed [rpm]	Coppia nominale Rated torque [Nm]	Potenza nominale Rated power [W]
BL140.480	8	3	48	3000	1.4	440
Tipo Type	Coppia massima Peak torque [Nm]	Corrente nominale Rated current [A]	Resistenza Resistance [Ω]	Induttanza Inductance [mH]	Corrente massima Peak current [A]	Peso Weight [kg]
BL140.480	2.8	13	0.16	0.5	26	3.15

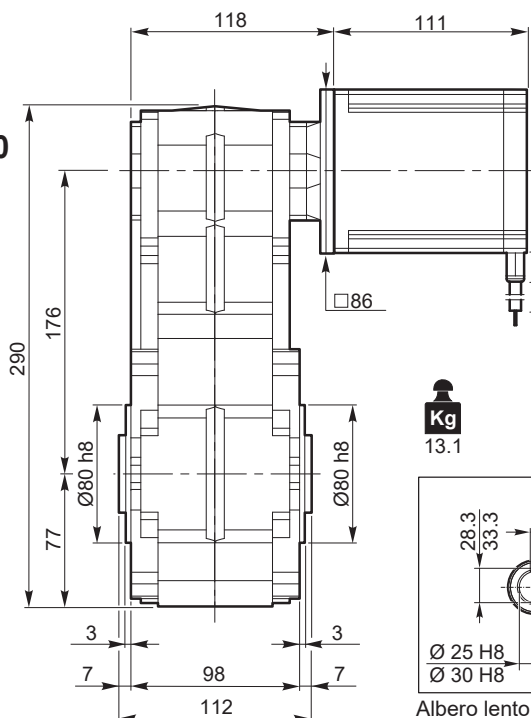
Azionamenti Drives



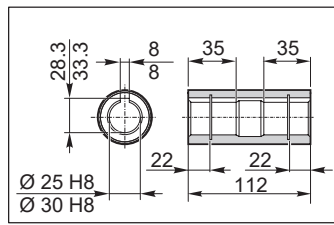
FT176.. AS...

BD23

FT176U + BL140.480

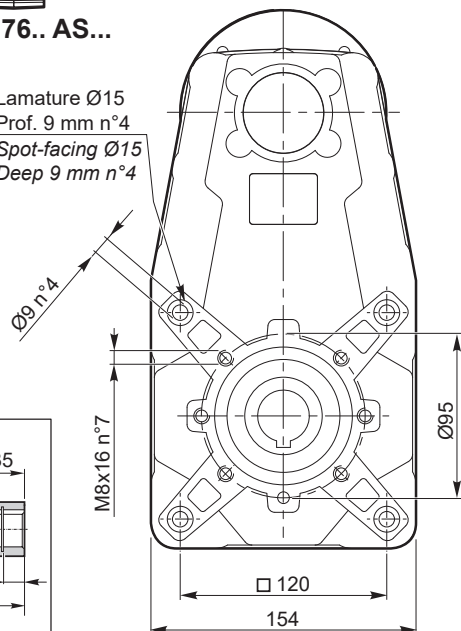


Kg 13.1

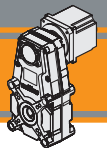


Albero lento cavo / Hollow output shaft

Lamature Ø15 Prof. 9 mm n°4
Spot-facing Ø15 Deep 9 mm n°4



FT IP 55



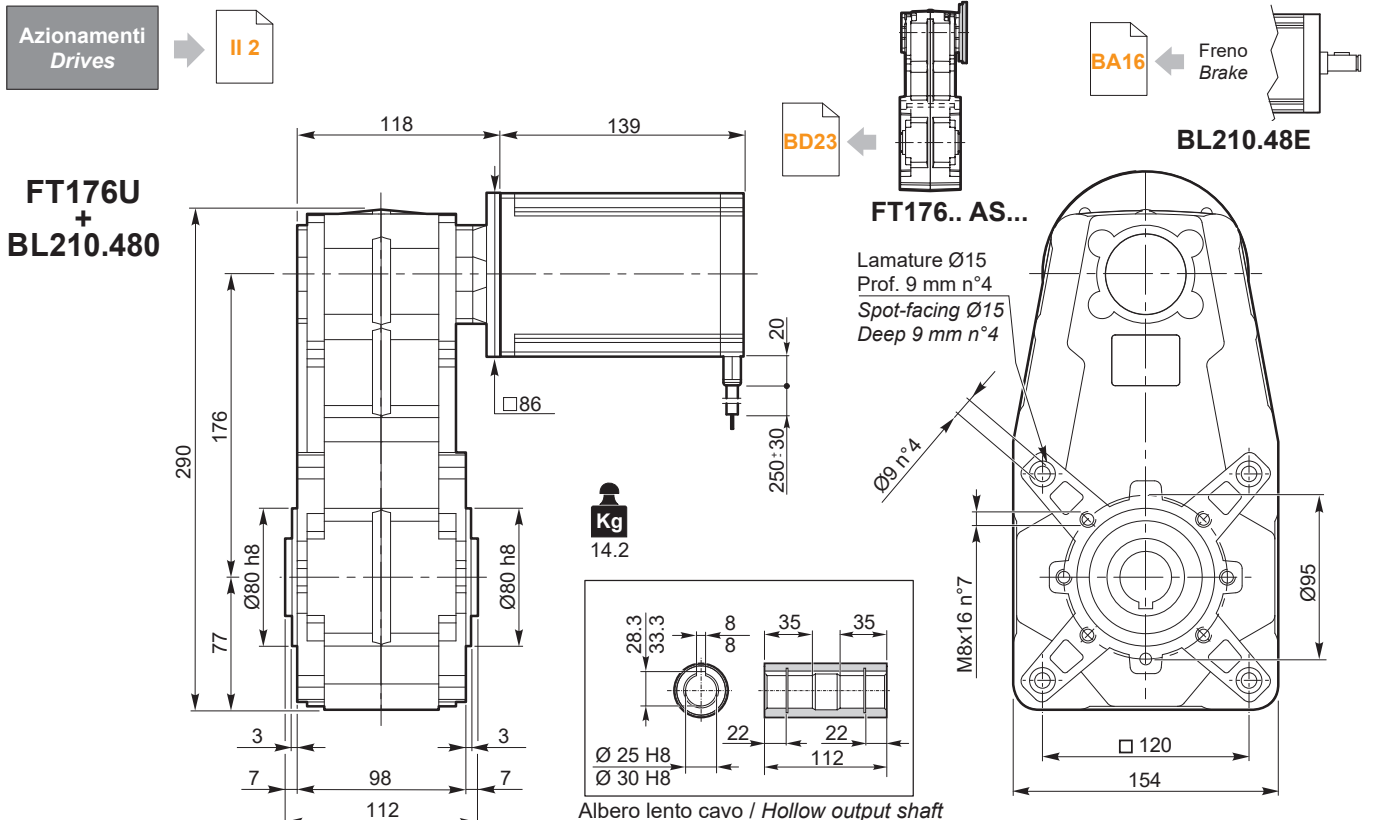
FT176	BL210.480 / BL210.48E					
	48V					
	ir	n _{2MIN} [rpm]			n _{2MAX} [rpm]	
M ₂ [Nm]		sf		M ₂ [Nm]	sf	n _{1MAX} [rpm]
14.49	21	29	5.6	207	29	3.8
17.31	17	34	5.0	173	34	3.4
20.97	14	41	4.4	143	41	3.0
24.56	12	48	4.3	122	48	2.9
29.33	10	58	3.6	102	58	2.4
34.62	8.7	68	3.2	87	68	2.2
37.50	8.0	74	3.0	80	74	2.0
41.35	7.3	82	2.8	73	82	1.9
44.79	6.7	88	2.7	67	88	1.9
50.10	6.0	99	2.6	60	99	1.7
54.26	5.5	107	2.5	55	107	1.7
63.55	4.7	125	2.1	47	125	1.4
75.90	4.0	150	1.9	40	150	1.3
85.40	3.5	169	1.7	35	169	1.2
89.60	3.3	177	1.8	33	177	1.2
107.02	2.8	211	1.6	28	211	1.1
126.92	2.4	251	1.4	24	251	0.9
144.74	2.1	286	1.2	21	286	0.8
163.25	1.8	322	1.1	18	293	0.8
204.08	1.5	403	0.9	15	293	0.8
215.11	1.4	425	0.8	14	293	0.8
276.68	1.1	431	0.8	11	293	0.8
303.29	1.0	431	0.8	10	293	0.8
390.11	0.8	431	0.8	7.7	293	0.8

NOTA: per servizio continuo o altamente intermittente, contattare il servizio tecnico

NOTE: for continuous or highly intermittent duty, please contact our technical service

Attenzione: superamento della coppia nominale supportata dal riduttore per servizio S1. Contattare il ns. servizio tecnico
Attention: rated torque withstood by gear reducer for service in S1 is exceeded. Please, contact our technical office.

Tipo Type	Numero di poli Number of poles	Numero di fasi Number of phase	Tensione Rated voltage [V]	Numero di giri Rated speed [rpm]	Coppia nominale Rated torque [Nm]	Potenza nominale Rated power [W]
BL210.480 BL210.48E	8	3	48	3000	2.1	660
Tipo Type	Coppia massima Peak torque [Nm]	Corrente nominale Rated current [A]	Resistenza Resistance [ohm]	Induttanza Inductance [mH]	Corrente massima Peak current [A]	Peso Weight [kg]
BL210.480 BL210.48E	4.2	18.7	0.115	0.31	37	4.2



FT IP 55



Motoriduttori brushless CC pendolari Brushless DC helical parallel gearmotors

FT176 con motore brushless CC

FT176 with brushless DC motor

FT176	BL400.48.120													
	24V						48V							
	n _{2MIN} [rpm]			n _{2MAX} [rpm]			n _{1MAX} [rpm]	n _{2MIN} [rpm]			n _{2MAX} [rpm]		n _{1MAX} [rpm]	
M ₂ [Nm]	sf		M ₂ [Nm]	sf		M ₂ [Nm]		sf		M ₂ [Nm]	sf			
14.49	10	48	3.4	97	48	2.9	1400	21	48	3.4	207	48	2.3	3000
17.31	8.1	57	3.0	81	57	2.6		17	57	3.0	173	57	2.1	
20.97	6.7	69	2.7	67	69	2.3		14	69	2.7	143	69	1.8	
24.56	5.7	81	2.6	57	81	2.2		12	81	2.6	122	81	1.7	
29.33	4.8	96	2.1	48	96	1.9		10	96	2.1	102	96	1.5	
34.62	4.0	114	1.9	40	114	1.7		8.7	114	1.9	87	114	1.3	
37.50	3.7	123	1.8	37	123	1.5		8.0	123	1.8	80	123	1.2	
41.35	3.4	136	1.7	34	136	1.5		7.3	136	1.7	73	136	1.1	
44.79	3.1	147	1.6	31	147	1.4		6.7	147	1.6	67	147	1.1	
50.10	2.8	165	1.5	28	165	1.3		6.0	165	1.5	60	165	1.0	
54.26	2.6	179	1.5	26	179	1.3		5.5	179	1.5	55	179	1.0	
63.55	2.2	209	1.3	22	209	1.1		4.7	209	1.3	47	209	0.9	
75.90	1.8	250	1.2	18	250	1.0		4.0	250	1.2	40	250	0.8	
85.40	1.6	281	1.0	16	281	0.9		3.5	281	1.0	35	281	0.7	
89.60	1.6	295	1.1	16	295	0.9		3.3	295	1.1	33	295	0.7	
107.02	1.3	352	0.9	13	352	0.8		2.8	352	0.9	28	330	0.7	
126.92	1.1	418	0.8	11	418	0.7		2.4	418	0.8	24	330	0.7	
144.74	1.0	476	0.7	10	420	0.7		2.1	476	0.7	21	330	0.7	
163.25	0.9	490	0.7	8.6	420	0.7		1.8	490	0.7	18	330	0.7	
204.08	0.7	490	0.7	6.9	420	0.7		1.5	490	0.7	15	330	0.7	
215.11	0.65	490	0.7	6.5	420	0.7	1.4	490	0.7	14	330	0.7		
276.68	0.51	490	0.7	5.1	420	0.7	1.1	490	0.7	11	330	0.7		
303.29	0.46	490	0.7	4.6	420	0.7	1.0	490	0.7	10	330	0.7		
390.11	0.36	490	0.7	3.6	420	0.7	0.77	490	0.7	7.7	330	0.7		

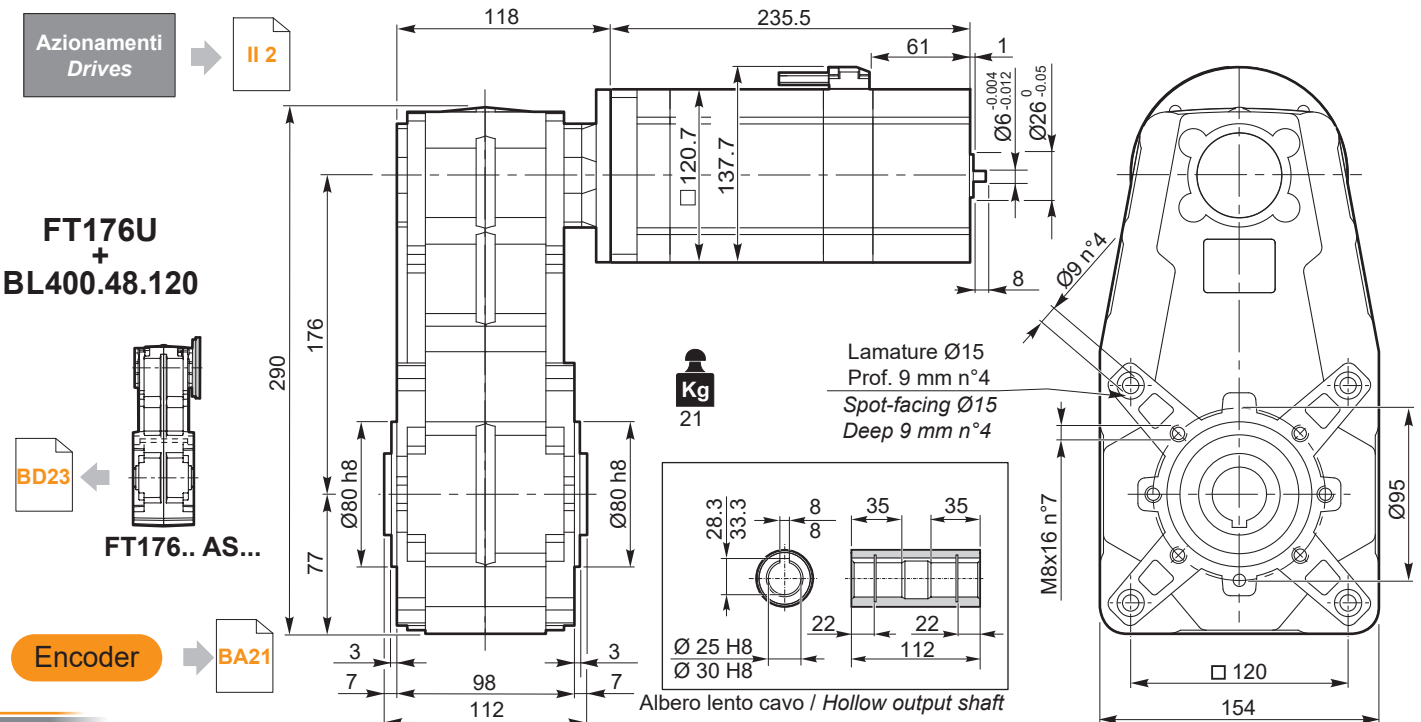
NOTA: per servizio continuo o altamente intermittente, contattare il servizio tecnico

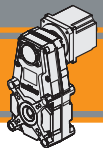
NOTE: for continuous or highly intermittent duty, please contact our technical service

Attenzione: superamento della coppia nominale supportata dal riduttore per servizio S1. Contattare il ns. servizio tecnico
Attention: rated torque withstood by gear reducer for service in S1 is exceeded. Please, contact our technical office.

Tipo Type	Numero di poli Number of poles	Numero di fasi Number of phase	Servizio Service	Tensione nominale Rated voltage [V]	Velocità nominale Rated speed [rpm]	Coppia nominale Rated torque [Nm]	Potenza nominale Rated power [W]	Coppia di picco Peak torque [Nm]	Corrente nominale Rated current [A]	Corrente di picco Peak current [A]
BL400.48.120	8	3	S3	48	3000	4.2	1320	8.4	33	99
			S1			3.5	1100	7.0	28	84
			S3	24	1400	4.2	615	8.4	33	99
			S1			3.5	515	7.0	28	84

Tipo Type	Resistenza fase-fase Line to line resistance [Ω]	Induttanza fase-fase Line to line inductance [mH]	Costante di coppia Torque constant [Nm/A]	Costante FCEM Back EMF [V/kRPM]	Inerzia rotore Rotor inertia [gcm ²]	Peso Weight [kg]
BL400.48.120	0.064	0.31	0.120	12.6	21380	11





FT196 con motore brushless CC

FT196 with brushless DC motor

FT196	BL210.480 / BL210.48E						
	48V						
ir	n ₂ MIN [rpm]			n ₂ MAX [rpm]			n ₁ MAX [rpm]
	M ₂ [Nm]	sf		M ₂ [Nm]	sf		
20.41	14.7	40	10.0	147	40	6.8	3000
34.81	8.6	69	6.7	86	69	4.5	
42.61	7.0	84	6.2	70	84	4.2	
59.36	5.1	117	4.9	51	117	3.3	
72.68	4.1	143	4.4	41	143	3.0	
92.82	3.2	183	3.5	32	183	2.3	
123.95	2.4	244	2.6	24	244	1.8	
158.02	1.9	312	2.0	19	312	1.4	
201.80	1.5	398	1.6	15	398	1.1	
269.47	1.1	532	1.2	11	532	0.8	

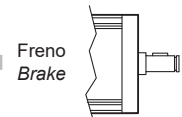
NOTA: per servizio continuo o altamente intermittente, contattare il servizio tecnico

NOTE: for continuous or highly intermittent duty, please contact our technical service

Attenzione: superamento della coppia nominale supportata dal riduttore per servizio S1. Contattare il ns. servizio tecnico
Attention: rated torque withstood by gear reducer for service in S1 is exceeded. Please, contact our technical office.

Tipo Type	Numero di poli Number of poles	Numero di fasi Number of phase	Tensione Rated voltage [V]	Numero di giri Rated speed [rpm]	Coppia nominale Rated torque [Nm]	Potenza nominale Rated power [W]
BL210.480 BL210.48E	8	3	48	3000	2.1	660
Tipo Type	Coppia massima Peak torque [Nm]	Corrente nominale Rated current [A]	Resistenza Resistance [ohm]	Induttanza Inductance [mH]	Corrente massima Peak current [A]	Peso Weight [kg]
BL210.480 BL210.48E	4.2	18.7	0.115	0.31	37	4.2

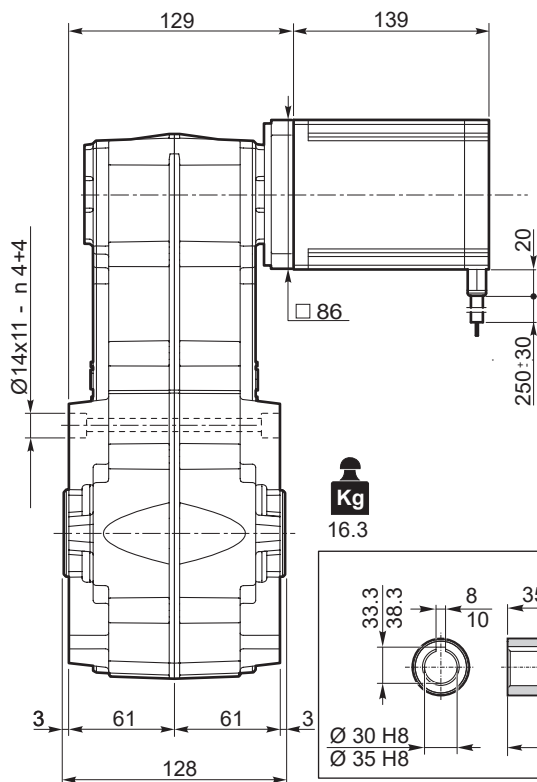
Azionamenti Drives



FT196.. AS...

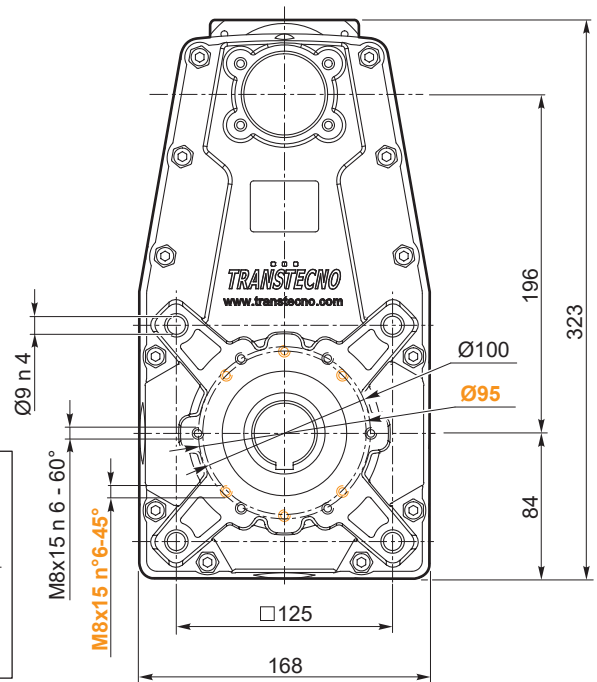
BL210.48E

FT196U + BL210.480



Kg
16.3

Albero lento cavo / Hollow output shaft



IP 55
FT



Motoriduttori brushless CC pendolari Brushless DC helical parallel gearmotors

FT196 con motore brushless CC

FT196 with brushless DC motor

FT196	BL200.48.95													
	24V						48V							
	n _{2MIN} [rpm]			n _{2MAX} [rpm]			n _{1MAX} [rpm]	n _{2MIN} [rpm]			n _{2MAX} [rpm]		n _{1MAX} [rpm]	
M ₂ [Nm]	sf		M ₂ [Nm]	sf		M ₂ [Nm]		sf		M ₂ [Nm]	sf			
20.41	7.4	38	10.5	74	38	9.1	1500	15	38	10.5	147	38	7.1	3000
34.81	4.3	65	7.0	43	65	6.1		8.6	65	7.0	86	65	4.8	
42.61	3.5	80	6.5	35	80	5.6		7.0	80	6.5	70	80	4.4	
59.36	2.5	112	5.2	25	112	4.5		5.1	112	5.2	51	112	3.5	
72.68	2.1	137	4.6	21	137	4.0		4.1	137	4.6	41	137	3.1	
92.82	1.6	175	3.6	16	175	3.2		3.2	175	3.6	32	175	2.5	
123.95	1.2	233	2.7	12	233	2.4		2.4	233	2.7	24	233	1.8	
158.02	0.95	297	2.1	9.5	297	1.9		1.9	297	2.1	19	297	1.4	
201.80	0.74	379	1.7	7.4	379	1.4		1.5	379	1.7	15	379	1.1	
269.47	0.56	507	1.2	5.6	507	1.1		1.1	507	1.2	11	507	0.8	

NOTA: per servizio continuo o altamente intermittente, contattare il servizio tecnico

NOTE: for continuous or highly intermittent duty, please contact our technical service

Attenzione: superamento della coppia nominale supportata dal riduttore per servizio S1. Contattare il ns. servizio tecnico
Attention: rated torque withstood by gear reducer for service in S1 is exceeded. Please, contact our technical office.

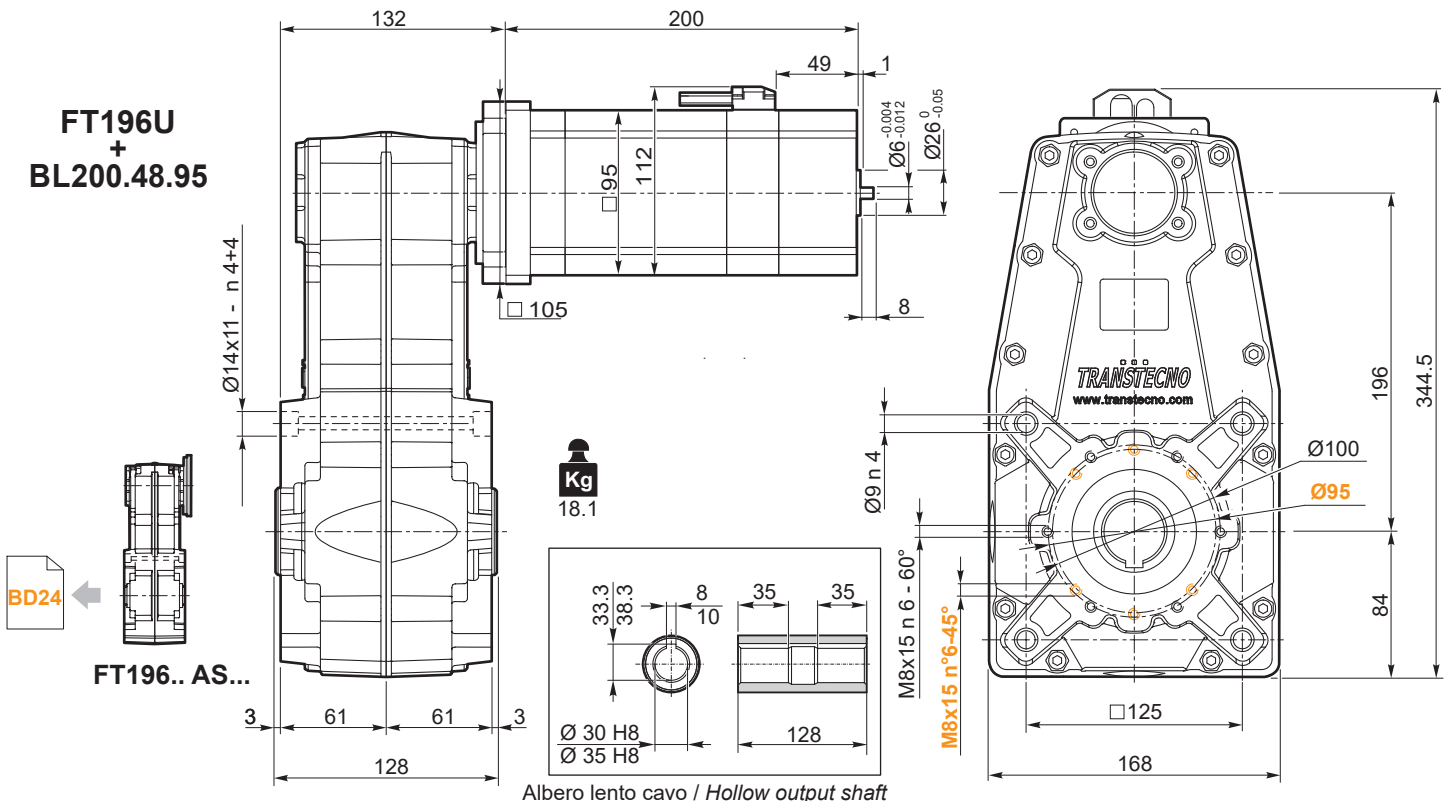
Tipo Type	Numero di poli Number of poles	Numero di fasi Number of phase	Servizio Service	Tensione nominale Rated voltage [V]	Velocità nominale Rated speed [rpm]	Coppia nominale Rated torque [Nm]	Potenza nominale Rated power [W]	Coppia di picco Peak torque [Nm]
BL200.48.95	8	3	S1	48	3000	2.0	650	4.0
				24	1500		300	

Tipo Type	Corrente nominale Rated current [A]	Corrente di picco Peak current [A]	Resistenza fase-fase Line to line resistance [Ω]	Induttanza fase-fase Line to line inductance [mH]	Costante di coppia Torque constant [Nm/A]	Costante FCEM Back EMF [V/kRPM]	Inerzia rotore Rotor inertia [gcm ²]	Peso Weight [kg]
BL200.48.95	16.5	49.5	0.068 +/- 15%	0.25	0.091	6.7 +/- 10%	2820	6

Azionamenti Drives



FT196U + BL200.48.95



Albero lento cavo / Hollow output shaft

Encoder





FT196 con motore brushless CC

FT196 with brushless DC motor

FT196	BL400.48.120													
	24V						48V							
	n _{2MIN} [rpm]			n _{2MAX} [rpm]			n _{1MAX} [rpm]	n _{2MIN} [rpm]			n _{2MAX} [rpm]			n _{1MAX} [rpm]
M ₂ [Nm]	sf		M ₂ [Nm]	sf		M ₂ [Nm]		sf		M ₂ [Nm]	sf			
20.41	6.9	67	6.0	69	67	5.2	1400	15	67	6.0	147	67	4.1	3000
34.81	4.0	115	4.0	40	115	3.5		8.6	115	4.0	86	115	2.7	
42.61	3.3	140	3.7	33	140	3.2		7.0	140	3.7	70	140	2.5	
59.36	2.4	195	2.9	24	195	2.6		5.1	195	2.9	51	195	2.0	
72.68	1.9	239	2.6	19	239	2.3		4.1	239	2.6	41	239	1.8	
92.82	1.5	305	2.1	15	305	1.8		3.2	305	2.1	32	305	1.4	
123.95	1.1	408	1.6	11	408	1.3		2.4	408	1.6	24	408	1.1	
158.02	0.89	520	1.2	8.9	520	1.1		1.9	520	1.2	19	520	0.8	
201.80	0.69	664	1.0	6.9	664	0.8		1.5	664	1.0	15	600	0.7	
269.47	0.52	880	0.7	5.2	780	0.7		1.1	880	0.7	11	600	0.7	

NOTA: per servizio continuo o altamente intermittente, contattare il servizio tecnico

NOTE: for continuous or highly intermittent duty, please contact our technical service

Attenzione: superamento della coppia nominale supportata dal riduttore per servizio S1. Contattare il ns. servizio tecnico
Attention: rated torque withstood by gear reducer for service in S1 is exceeded. Please, contact our technical office.

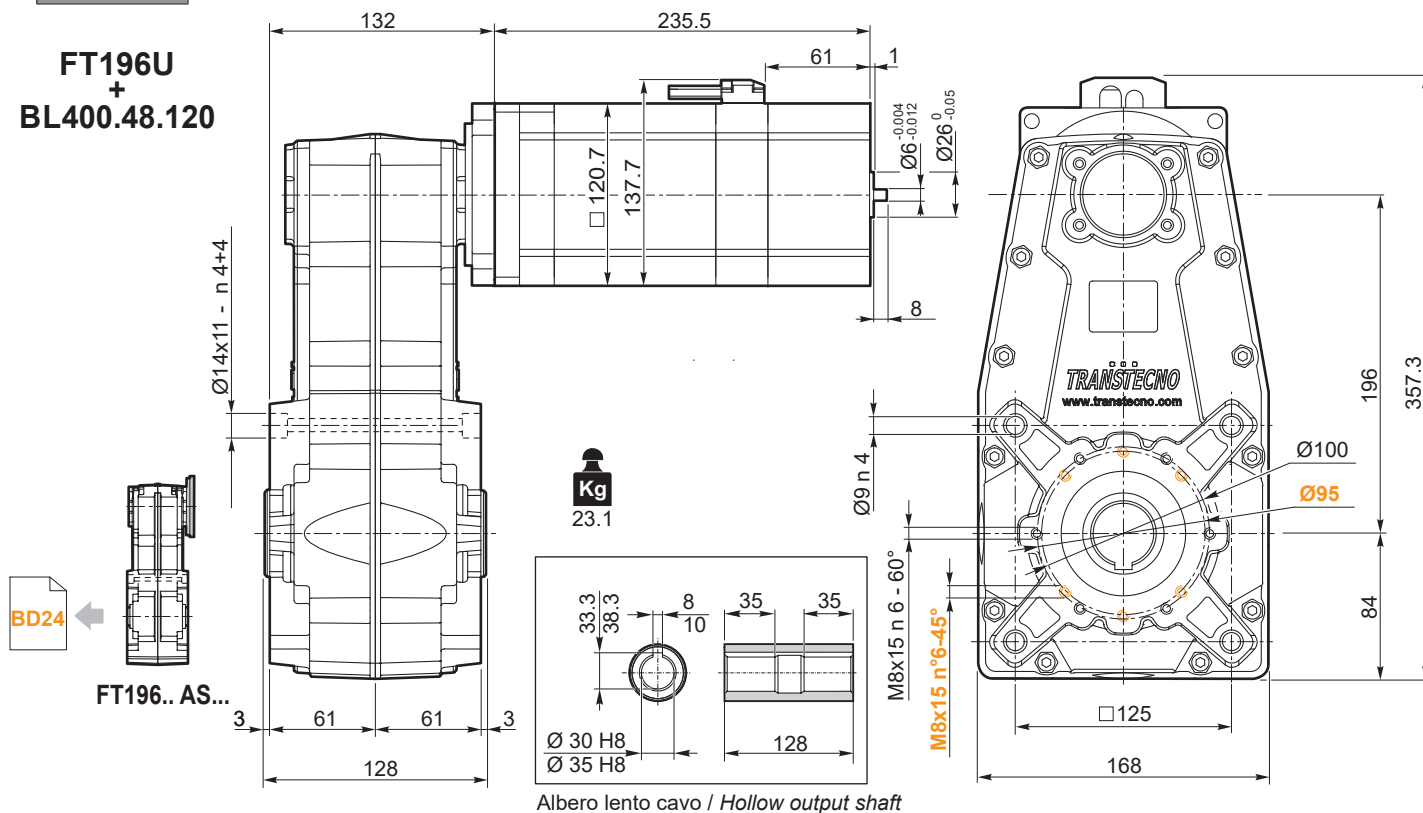
Tipo Type	Numero di poli Number of poles	Numero di fasi Number of phase	Servizio Service	Tensione nominale Rated voltage [V]	Velocità nominale Rated speed [rpm]	Coppia nominale Rated torque [Nm]	Potenza nominale Rated power [W]	Coppia di picco Peak torque [Nm]	Corrente nominale Rated current [A]	Corrente di picco Peak current [A]
BL400.48.120	8	3	S3	48	3000	4.2	1320	8.4	33	99
			S1			3.5	1100	7.0	28	84
			S3	24	1400	4.2	615	8.4	33	99
			S1			3.5	515	7.0	28	84

Tipo Type	Resistenza fase-fase Line to line resistance [Ω]	Induttanza fase-fase Line to line inductance [mH]	Costante di coppia Torque constant [Nm/A]	Costante FCEM Back EMF [V/kRPM]	Inerzia rotore Rotor inertia [gcm ²]	Peso Weight [kg]
BL400.48.120	0.064	0.31	0.120	12.6	21380	11

Azionamenti Drives



FT196U + BL400.48.120



Albero lento cavo / Hollow output shaft

Encoder



IP 55

FT




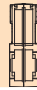
Motoriduttori brushless CC pendolari

Brushless DC helical parallel gearmotors

Dati tecnici

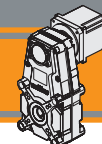
Technical data

	n_2 [min ⁻¹]	Mn_2 [Nm]	Pn_1 [kW]	i	
FT105					
n1 = 1400 rpm	68	40	0.30	20.57	
	42	50	0.23	33.32	
FT105/3	32	65	0.23	44.36	
	26		0.18	54.87	
	20		0.14	71.84	
	18		0.13	77.07	
	16		0.11	88.87	
	11		0.081	124.81	
	7.7		0.056	181.35	
	6.2		0.045	224.32	
FT105/4	4.4	65	0.032	315.05	
	3.8		0.028	368.19	
	2.6		0.019	534.98	
	2.1		0.015	661.76	
FT146	n1 = 1400 rpm	75	80	0.65	18.75
		53		0.47	26.17
		50		0.43	28.26
	100	40	0.44	35.07	
		35	0.39	39.44	
		30	0.33	46.44	
		26	0.29	52.86	
		110	23	0.28	60.63
	20		0.24	70.00	
	17		0.20	84.63	
15	0.18		95.61		
12	0.15		113.40		
10	0.13		133.45		
9.3	0.11		150.18		
120	8.7	0.11	160.43		
	7.8	0.10	178.83		
	6.3	0.082	223.92		
	5.9	0.077	236.83		
	4.7	0.061	300.07		
	3.5	0.046	397.38		

	n_2 [min ⁻¹]	Mn_2 [Nm]	Pn_1 [kW]	i	
FT105					
n1 = 3000 rpm	146	31	0.51	20.57	
	90	39	0.39	33.32	
FT105/3	68	51	0.38	44.36	
	55		0.31	54.87	
	42		0.24	71.84	
	39		0.22	77.07	
	34		0.19	88.87	
	24		0.14	124.81	
	17		0.09	181.35	
	13		0.08	224.32	
FT105/4	10	51	0.05	315.05	
	8.1		0.05	368.19	
	5.6		0.03	534.98	
	4.5		0.03	661.76	
FT146	n1 = 3000 rpm	160	62	1.11	18.75
		115		0.79	26.17
		106		0.73	28.26
	78	86	0.74	35.07	
		76	0.66	39.40	
		65	0.56	46.44	
		57	0.49	52.86	
		86	49	0.47	60.63
	43		0.41	70.00	
	35		0.34	84.63	
31	0.30		95.61		
26	0.25		113.40		
22	0.21		133.45		
20	0.19		150.18		
94	19	0.19	160.43		
	17	0.17	178.83		
	13	0.14	223.92		
	13	0.13	236.83		
	10	0.10	300.07		
	7.5	0.08	397.38		


NOTA: per servizio continuo o altamente intermittente, contattare il servizio tecnico

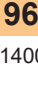
NOTE: for continuous or highly intermittent duty, please contact our technical service





Dati tecnici

Technical data

	n_2 [min ⁻¹]	Mn_2 [Nm]	Pn_1 [kW]	i	
FT176					
n1 = 1400 rpm	97	140	1.51	14.49	
	81	150	1.35	17.31	
	67	160	1.19	20.97	
	57	180	1.14	24.56	
	48	180	0.96	29.33	
	40	190	0.85	34.62	
	37	190	0.79	37.50	
	34	200	0.75	41.35	
	31	210	0.73	44.79	
	28	220	0.68	50.10	
	26	230	0.66	54.26	
	22	230	0.56	63.55	
	18	250	0.51	75.90	
	16.4	250	0.46	85.40	
	15.6	280	0.49	89.60	
	13	290	0.42	107.02	
		300		0.37	126.92
				0.32	144.74
				0.29	163.25
				0.23	204.08
			0.22	215.11	
			0.17	276.68	
			0.15	303.29	
			0.12	390.11	

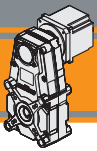
	n_2 [min ⁻¹]	Mn_2 [Nm]	Pn_1 [kW]	i	
FT196					
n1 = 1400 rpm	69	350	2.6	20.41	
	40	400	1.8	34.81	
	33	450	1.6	42.61	
	24	500	1.3	59.36	
	19	550		1.1	72.68
	15			0.92	92.82
	11			0.69	123.95
	8.9			0.51	158.02
	6.9			0.42	201.80
	5.2			0.32	269.47

	n_2 [min ⁻¹]	Mn_2 [Nm]	Pn_1 [kW]	i	
FT176					
n1 = 3000 rpm	207	109	2.52	14.49	
	173	117	2.26	17.31	
	143	125	1.99	20.97	
	122	140	1.91	24.56	
	102	140	1.60	29.33	
	87	148	1.43	34.62	
	80	148	1.32	37.50	
	73	156	1.26	41.35	
	67	164	1.22	44.79	
	60	172	1.14	50.10	
	55	179	1.10	54.26	
	47	179	0.94	63.55	
	40	195	0.86	75.90	
	35	195	0.76	85.40	
	33	218	0.81	89.60	
	28	226	0.71	107.02	
		234		0.62	126.92
				0.54	144.74
				0.48	163.25
				0.38	204.08
			0.36	215.11	
			0.28	276.68	
			0.26	303.29	
			0.20	390.11	

	n_2 [min ⁻¹]	Mn_2 [Nm]	Pn_1 [kW]	i	
FT196					
n1 = 3000 rpm	147	273	4.47	20.41	
	86	312	3.37	34.81	
	70	351	3.06	42.61	
	51	390	2.42	59.36	
	41	429		1.97	72.68
	32			1.54	92.82
	24			1.16	123.65
	19			0.91	158.02
	15			0.71	201.80
	11			0.53	269.47

NOTA: per servizio continuo o altamente intermittente, contattare il servizio tecnico

NOTE: for continuous or highly intermittent duty, please contact our technical service

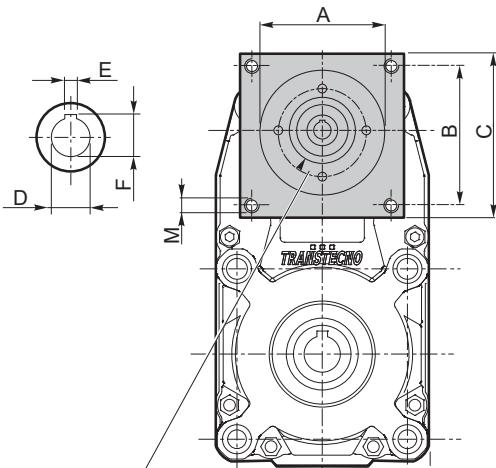


Motoriduttori brushless CC pendolari Brushless DC helical parallel gearmotors

Dimensioni FT con flange motore AS

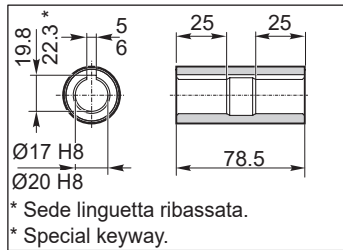
FT dimensions with motor flanges AS

FT105 - U - AS...

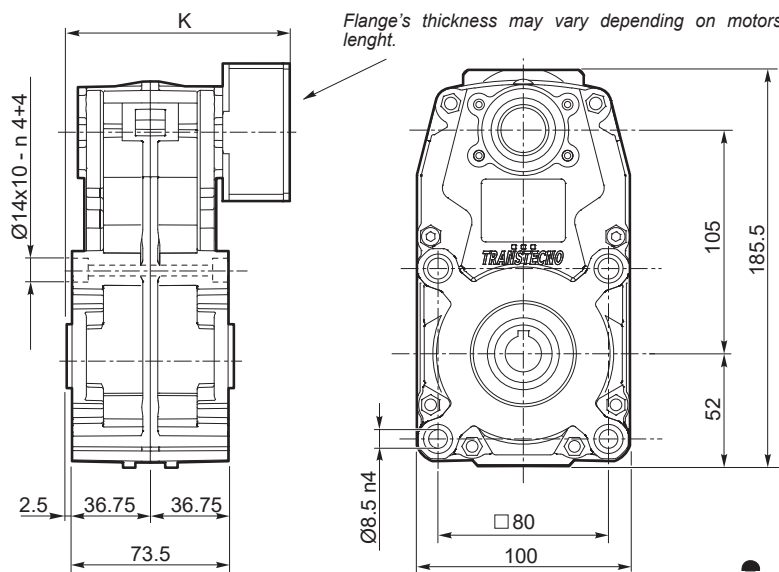


Connessione con boccola o giunto in funzione del diametro dell'albero motore.

Connection with sleeve or coupling depending on motorshaft's diameter.



Albero lento cavo / Hollow output shaft



Lo spessore della flangia è variabile in funzione delle diverse lunghezze dell'albero motore.

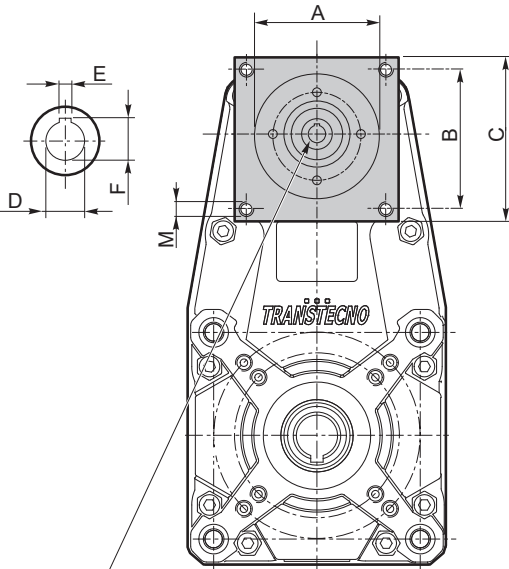
Flange's thickness may vary depending on motorshaft's length.

Kg
4.2

Dimensioni / Dimensions

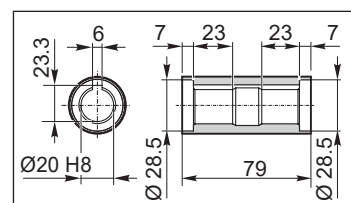
AS	A	B	C	M	K	D	E	F
AS416	38.1	47.1	56.6	M5	101.8	9	3	10.4
...

FT146 - U - AS...

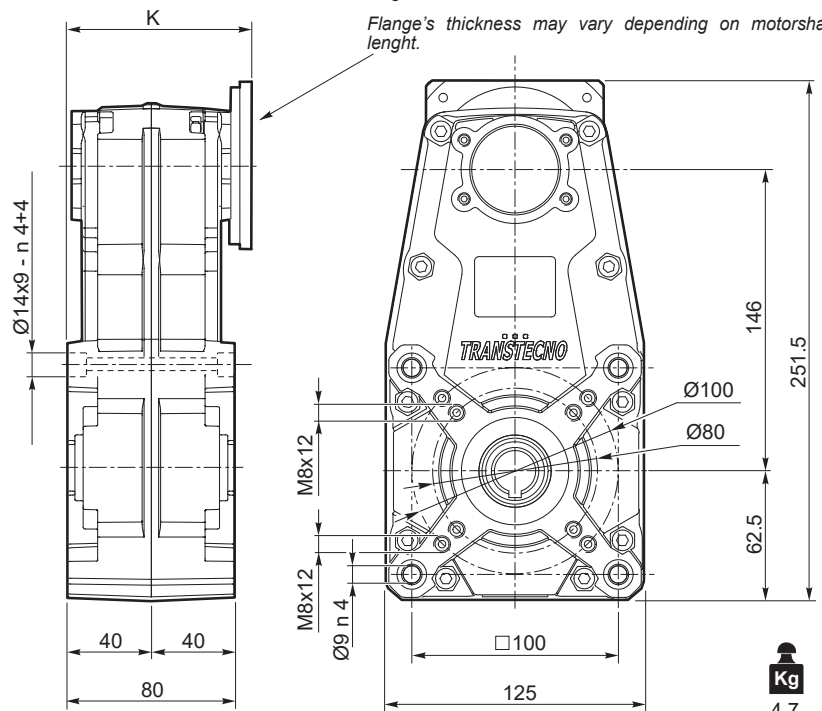


Connessione con boccola o giunto in funzione del diametro dell'albero motore.

Connection with sleeve or coupling depending on motorshaft's diameter.



Albero lento cavo / Hollow output shaft



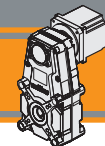
Lo spessore della flangia è variabile in funzione delle diverse lunghezze dell'albero motore.

Flange's thickness may vary depending on motorshaft's length.

Kg
4.7

Dimensioni / Dimensions

AS	A	B	C	M	K	D	E	F
AS392FX	38.1	47.1	64	M5	97	9	3	10.5
						11	4	12.8
						14	5	16.3
AS384FX	73	69.6	86	M5	97	9	3	10.5
						11	4	12.8
						14	5	16.3
...



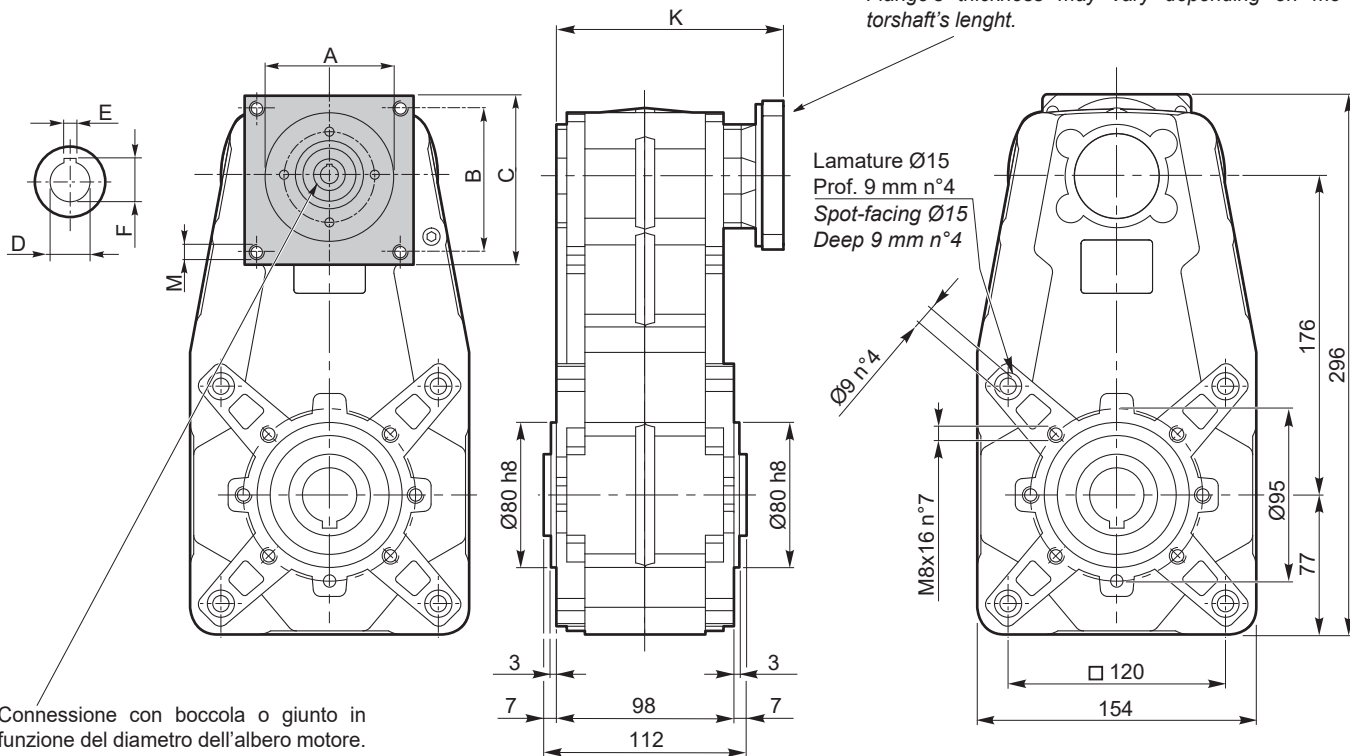
Dimensioni FT con flange motore AS

FT dimensions with motor flanges AS

FT176 - U - AS...

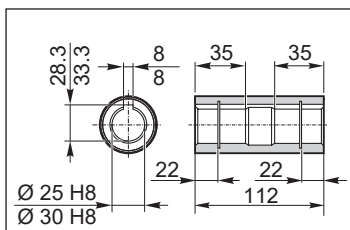
Lo spessore della flangia è variabile in funzione delle diverse lunghezze dell'albero motore.

Flange's thickness may vary depending on motorshaft's lenght.



Connessione con boccola o giunto in funzione del diametro dell'albero motore.

Connection with sleeve or coupling depending on motorshaft's diameter.



Kg
10.0

Dimensioni / Dimensions									
AS	A	B	C	M	K	D	E	F	
AS363	73	69.4	86	M5	129	14	5	16.3	
						19	6	21.8	
						24	8	27.3	
...

IP 55
FT



Motoriduttori brushless CC pendolari Brushless DC helical parallel gearmotors

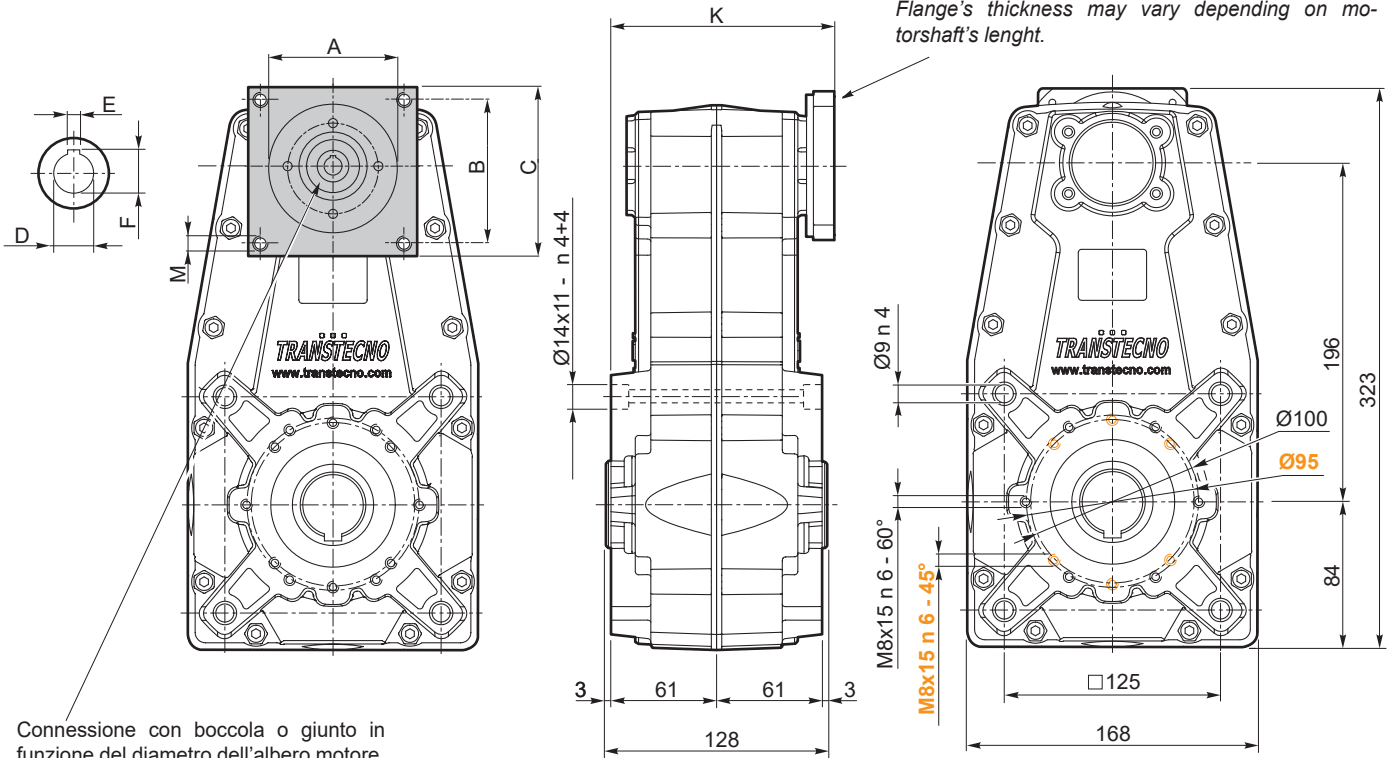
Dimensioni FT con flange motore AS

FT dimensions with motor flanges AS

FT196 - U - AS...

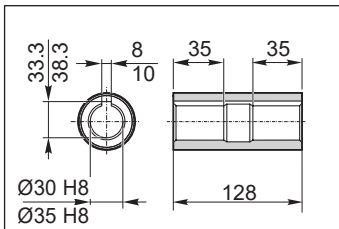
Lo spessore della flangia è variabile in funzione delle diverse lunghezze dell'albero motore.

Flange's thickness may vary depending on motorshaft's lenght.



Connessione con boccia o giunto in funzione del diametro dell'albero motore.

Connection with sleeve or coupling depending on motorshaft's diameter.



Albero lento cavo / Hollow output shaft

Kg
12.1

Dimensioni / Dimensions									
AS	A	B	C	M	K	D	E	F	
AS363	73	69.4	86	M5	129	14	5	16.3	
						19	6	21.8	
						24	8	27.3	
...

 **TRANSTECNO SRL**
HEADQUARTERS

Company subject to the management
and coordination of INTERPUMP GROUP SPA
Via Caduti di Sabbiano, 11/D-E
40011 Anzola dell'Emilia (BO)
ITALY
T+39 051 64 25 811
F +39 051 73 49 43
sales@transtecno.com
www.transtecno.com


TRANSTECNO®
the modular gearmotor
MEMBER OF INTERPUMP GROUP




 **HANGZHOU INTERPUMP
POWER TRANSMISSIONS CO LTD**
No.4 Xiuyan Road Fengdu Industry Zone
Pingyao Town Yuhang District
Hangzhou City, Zhejiang Province
311115 – CHINA
T +86 571 86 92 02 60
info-china@transtecno.cn
www.transtecno.cn

 **TRANSTECNO IBÉRICA
THE MODULAR GEARMOTOR, S.A.**
Carrer de la Ciència, 45
08840 Viladecans (Barcelona) - SPAIN
T +34 931 598 950
info@transtecno.es
www.transtecno.es

 **TRANSTECNO B.V.**
Siliciumweg 32
3812 SX Amersfoort - NETHERLANDS
T +31(0) 33 45 19 505
info@transtecno.nl
www.transtecno.nl

 **TRANSTECNO AANDRIJFTECHNIEK B.V.**
Siliciumweg 32
3812 SX Amersfoort - NETHERLANDS
T +31 (0) 33 20 47 006
info@transtecnoaandrijftechnik.nl
www.transtecnoaandrijftechnik.nl

 **MA TRANSTECNO S.A.P.I. DE C.V.**
Julián Sepúlveda Dávila #107,
Parque Industrial SG
Apodaca, Nuevo León, CP. 66640
MÉXICO
T +52 8113340920
info@transtecno.com.mx
www.transtecno.com.mx


 **TRANSTECNO USA**
8 Creek Parkway,
Boothwyn PA 19061-8136 - UNITED STATES
T + 1 (610) 4970154

TRANSTECNO USA – WEST COAST BRANCH
14561 Fryelands Blvd SE
Monroe, WA 98272 - UNITED STATES
T +1 360-863-1300
usaoffice@transtecno.com
www.transtecno.com

 **TRANSTECNO CANADA**
51 B Caldari Road Unit 10
Vaughan, ON L4K 4G3 - CANADA
T +1 905 761 0762
canadaoffice@transtecno.com
www.transtecno.com

 **TRANSTECNO INDIA**
#6A, Sipcot Industrial complex, Phase-1, Elasagiri Road
Hosur – 635126 Tamilnadu - INDIA
T +91 4344 274434
M +91 81443 88800

TRANSTECNO INDIA – NORTH BRANCH
Plot No: 3 A, Sector 2, IIE, Sidcul, Pantnagar
U.S. Nagar, Uttarakhand – 263153 - INDIA
indiaoffice@transtecno.com
www.transtecno.com

 **TRANSTECNO BRAZIL**
Rua Gilberto de Zorzi, 525 Forqueta - CEP. 95115-730
CX Postal 3544 Caxias do Sul RS – BRAZIL

TRANSTECNO BRAZIL – SÃO PAULO BRANCH
R. Mafalda Barnabe Soliane, 314 – CEP. 13347-610
Indaiatuba, São Paulo - BRAZIL
T +55 19 3437 2520

TRANSTECNO BRAZIL – PORTO ALEGRE BRANCH
Rua Dr. Freire Alemão 155 / 402 - CEP. 90450-060
Auxiliadora Porto Alegre RS - BRAZIL
T +55 51 4042 0916
M +55 51 811 45 962
braziloffice@transtecno.com
www.transtecno.com.br

 **INTERPUMP ANTRIEBSTECHNIK GMBH**
Büro Stuttgart - GERMANY
T +49 (0)171 4781909
germanoffice@transtecno.com
www.transtecno.com

 **SALES OFFICE OCEANIA**
Unit 5, 12 Nyholt Drive, Yatala 4207
Queensland - AUSTRALIA
T +61 07 3800 0103
M +61 04 38060997

UNIT 9, 94 Boundary Rd, Sunshine West 3020
Victoria - AUSTRALIA
T +61 9312 4722
oceaniaoffice@transtecno.com
www.transtecno.com.au