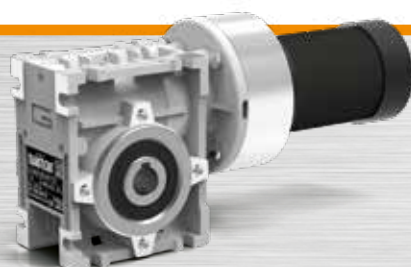
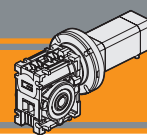




Motoriduttori brushless CC a vite senza fine
Brushless DC wormgearmotors

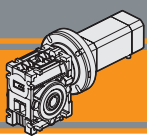




Indice	Index	Pag. Page
Caratteristiche tecniche	<i>Technical features</i>	AB2
Designazione	<i>Classification</i>	AB2
Simbologia	<i>Symbols</i>	AB2
Lubrificazione	<i>Lubrication</i>	AB2
Carichi radiali	<i>Radial loads</i>	AB3
Dati di dentatura	<i>Toothing data</i>	AB3
Rendimento	<i>Efficiency</i>	AB3
CM026 con motore brushless	<i>CM026 with brushless motor</i>	AB4
CM030 con motore brushless	<i>CM030 with brushless motor</i>	AB6
Dimensioni	<i>Dimensions</i>	AB8
Opzioni	<i>Options</i>	AB9
Accessori	<i>Accessories</i>	AB10

Questa sezione annulla e sostituisce ogni precedente edizione o revisione. Qualora questa sezione non Vi sia giunta in distribuzione controllata, l'aggiornamento dei dati ivi contenuto non è assicurato. **In tal caso la versione più aggiornata è disponibile sul nostro sito internet www.transtecno.com**

This section replaces any previous edition and revision. If you obtained this catalogue other than through controlled distribution channels, the most up to date content is not guaranteed. In this case the latest version is available on our web site www.transtecno.com



Motoriduttori brushless CC a vite senza fine Brushless DC wormgearmotors

Caratteristiche tecniche

Technical features

Le caratteristiche principali dei motoriduttori brushless CC a vite senza fine della serie CM sono:

The main features of brushless DC wormgearmotors range CM are:

- Alimentazione in bassa tensione 24/36 Vcc
- Possibilità di montaggio encoder
- Carcasse dei riduttori in pressofusione di alluminio
- Lubrificazione permanente con olio sintetico
- Low voltage power supply 24/36 Vdc
- Suitable for encoder assembly
- Die-cast aluminium housings
- Permanent synthetic oil long life lubrication

Designazione

Classification

RIDUTTORE / GEARBOX				MOTORE / MOTOR		
CM	026	20	U	BL012.240	24V	Encoder
Tipo Type	Grandezza Size	Rapporto in Ratio in	Versione Version	Tipo Type	Tensione Voltage	Opzioni Options
CM 	026 030	Vedere tabelle See tables	U F	BL012.240 BL018.240 BL025.24E BL025.48E BL032.240 BL043.240	24V 36V 48V	Encoder
Versione Riduttore Gearbox Version		Albero di uscita Output shaft		Braccio di reazione Torque arm		Angolo Angle

* NOTA: il braccio di reazione viene fornito smontato.
 * NOTE: the torque arm will be supplied not assembled.

Simbologia

Symbols

Ns	n° stadi / No. stages	Pn	[W]	Potenza nominale / Nominal power
in	rapporto nominale / nominal ratio	V	[V]	Tensione / Voltage
ir	rapporto reale / real ratio	I	[A]	Assorbimento / Current
M _n	[Nm] coppia in uscita in funzionamento continuativo S1 output torque for continuous operation S1	IC		Classe di isolamento termico / Thermal insulation class
Rd	rendimento dinamico / efficiency	FF		Fattore di forma / Form factor
R ₂	[N] massimo carico radiale al centro dell'albero uscita max. radial load at output shaft centre	n ₁	[Rpm]	Giri / Speed
A ₂	[N] massimo carico assiale / max. axial load	IP		Grado di protezione / Enclosure protection
		Kg		Peso / Weight

Lubrificazione

Lubrication

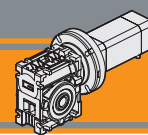
I riduttori a vite senza fine della serie CM026 e CM030 sono forniti completi di lubrificante sintetico viscosità 320, pertanto possono essere installati in qualunque posizione di montaggio e non necessitano di manutenzione.

Permanent synthetic oil long-life lubrication (viscosity grade 320) makes it possible to use CM026 and CM030 wormgearmotors range in all mounting positions; for this reason they can be installed in any assembly position and do not require maintenance. Ambient temperature 0 ÷ 40 °C (in the absence of freezing and condensation).

Temperatura ambiente 0 ÷ 40 °C (in assenza di congelamento ed in assenza di condensa).

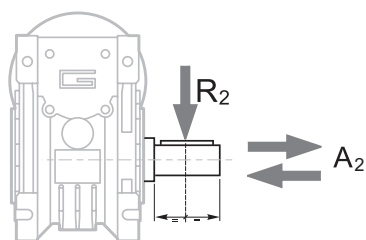
For temperature outside this range please contact our technical dept.

Per temperature diverse, contattare nostro UT.



Carichi radiali

Radial loads

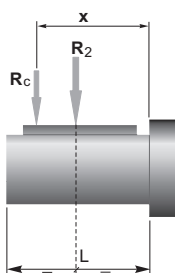


$$A_2 = R_2 \times 0.2$$

n ₂ [min ⁻¹]	R ₂ [N]	
	CM026	CM030
600	271	457
400	310	523
300	342	576
200	391	659
150	479	726
120	514	782
100	547	831
75	609	914
60	610	985
50	610	1047
38	610	1147
30	610	1241

Quando il carico radiale risultante non è applicato sulla mezza-
ria dell'albero occorre calcolare quello effettivo con la seguente
formula:

When the resulting radial load is not applied on the centre line
of the shaft it is necessary to calculate the effective load with the
following formula:



$$R_c = \frac{R_2 \cdot a}{(b+x)} \leq R_{2MAX}$$

$$R \leq R_c$$

a, b = valori riportati nella tabella
a, b = values given in the table

	CM	
	026	030
a	56	65
b	43	50
R _{2MAX}	610	1600

Dati di dentatura

Toothing data

	Dati della coppia vite-corona Worm wheel data	Rapporto / Ratio											
		5	7.5	10	15	20	25	30	40	50	60	80	100
CM026	Z	6	4	3	2	2		1	1	1	1		
	β	34° 35'	24° 41'	19° 1'	12° 57'	10° 30'		6° 33'	5° 17'	4° 26'	3° 49'		
CM030	Z	6	4	3	2	2	2	1	1	1	1	1	1
	β	27° 4'	24° 28'	18° 50'	12° 49'	10° 23'	8° 43'	6° 29'	5° 14'	4° 23'	3° 46'	2° 57'	2° 25'

Rendimento

Efficiency

	n ₁ [min ⁻¹]	Rendimento Efficiency	Rapporto / Ratio													
			5	7.5	10	15	20	25	30	40	50	60	80	100		
CM026	2800	Rd	89	87	85	83	80		73	68	64	60				
			1400	87	84	83	78	74		66	61	57	53			
			900	84	83	80	75	71		61	57	52	48			
CM030	2800	Rs	72	71	68	61	56	46	41	36	34					
			1400	Rd	89	88	86	84	81	78	74	70	65	62	57	52
					86	85	84	79	75	72	67	62	58	55	48	43
84	83	81			75	71	68	62	58	53	49	43	39			
CM030	900	Rs	72	67	63	55	50	43	39	35	31	27	23	21		

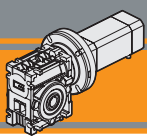
Reversibilità e irreversibilità

Reversibility and irreversibility

La tabella sottostante riporta a titolo puramente indicativo i vari
gradi di reversibilità/irreversibilità nei riduttori a vite senza fine in
funzione del rendimento dinamico Rd e statico Rs.

The table below is provided for reference purposes only. It con-
tains the various degrees of reversibility/irreversibility of wormge-
arboxes in relation to dynamic Rd and static Rs efficiency.

Rd	Reversibilità e irreversibilità dinamica	Dynamic reversibility and irreversibility
> 0.60	Reversibilità dinamica	Dynamic reversibility
0.50 - 0.60	Reversibilità dinamica incerta	Uncertain dynamic reversibility
0.40 - 0.50	Buona irreversibilità dinamica	Good dynamic irreversibility
<0.40	Irreversibilità dinamica	Dynamic irreversibility
Rs	Reversibilità e irreversibilità statica	Static reversibility and irreversibility
> 0.55	Reversibilità statica	Static reversibility
0.50 - 0.55	Reversibilità statica incerta	Uncertain static reversibility
<0.50	Irreversibilità statica	Static irreversibility



Motoriduttori brushless CC a vite senza fine Brushless DC wormgearmotors

CM026 con motore brushless CC

CM026 with DC brushless motor

CM026	BL012.240						BL018.240							
	24V						24V							
	n ₂ MIN [rpm]			n ₂ MAX [rpm]			n ₁ MAX [rpm]	n ₂ MIN [rpm]			n ₂ MAX [rpm]			n ₁ MAX [rpm]
ir	M ₂ [Nm]	sf	M ₂ [Nm]	sf		M ₂ [Nm]		sf	M ₂ [Nm]	sf				
5	80	0.5	45	800	0.6	16	4000	80	0.7	31	800	0.8	11	4000
7.5	53	0.7	33	533	0.8	12		53	1.1	22	533	1.2	8.0	
10	40	0.9	26	400	1.1	9.1		40	1.4	17	400	1.6	6.1	
15	27	1.3	19	267	1.6	6.2		27	1.9	13	267	2.3	4.2	
20	20	1.6	14	200	2.0	4.8		20	2.4	10	200	3.0	3.3	
30	13	2.1	12	133	2.7	3.8		13	3.1	8.2	133	4.1	2.6	
40	10	2.5	8.0	100	3.4	2.8		10	3.7	5.4	100	5.0	1.9	
50	8	2.8	6.8	80	4.0	2.2		8	4.2	4.6	80	5.9	1.5	
60	7	3.2	5.4	67	4.5	1.8		7	4.7	3.6	67	6.7	1.2	

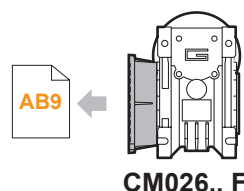
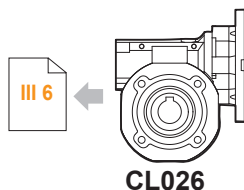
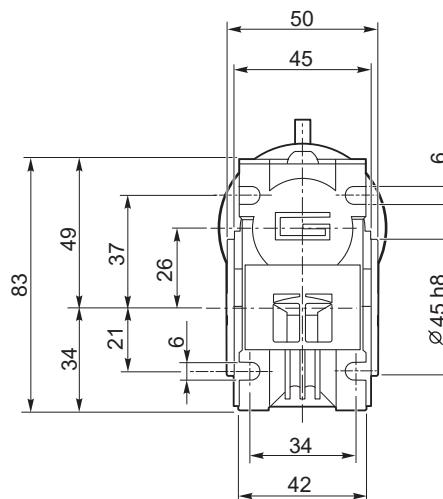
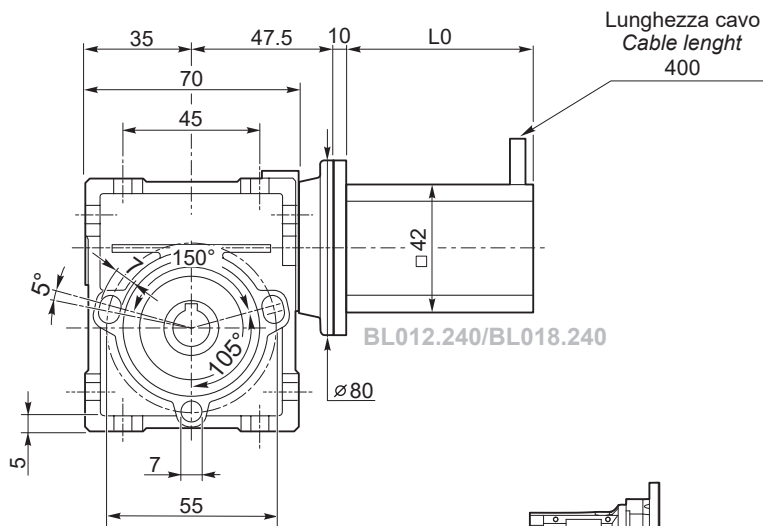
NOTA: per servizio continuo o altamente intermittente, contattare il servizio tecnico

NOTE: for continuous or highly intermittent duty, please contact our technical service

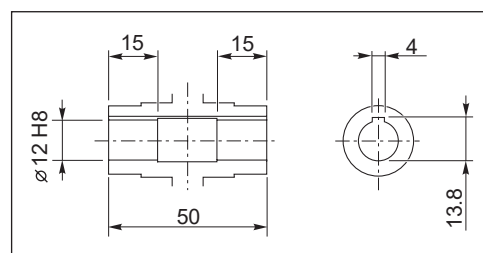
Tipo Type	Numero di poli Number of poles	Numero di fasi Number of phase	Tensione Rated voltage [V]	Numero di giri Rated speed [rpm]	Coppia nominale Rated torque [Nm]	Potenza nominale Rated power [W]
BL012.240	8	3	24	4000	0.125	52.5
BL018.240	8	3	24	4000	0.185	77.5

Tipo Type	Coppia massima Peak torque [Nm]	Corrente nominale Rated current [A]	Resistenza Resistance [ohm]	Induttanza Inductance [mH]	Corrente massima Peak current [A]	Peso Weight [kg]
BL012.240	0.25	3.5	0.8	1.2	7.0	0.45
BL018.240	0.37	5.0	0.55	0.8	10.0	0.65

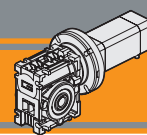
Azionamenti Drives 



Tipo Type	L0	L1	L2
BL012.240	61	-	-
BL018.240	81	-	-



Albero lento cavo / Hollow output shaft



CM026 con motore brushless CC

CM026 with DC brushless motor

CM026	BL025.24E						
	24V						
ir	n ₂ MIN [rpm]			n ₂ MAX [rpm]			n ₁ MAX [rpm]
		M ₂ [Nm]	sf		M ₂ [Nm]	sf	
5	80	1.0	23	800	1.1	8	4000
7.5	53	1.5	16	533	1.6	5.9	
10	40	1.9	13	400	2.1	4.5	
15	27	2.6	9	267	3.1	3.1	
20	20	3.3	7	200	4.0	2.4	
30	13	4.1	6.1	133	5.5	1.9	
40	10	5.0	4.0	100	6.8	1.4	
50	8	5.6	3.4	80	8.0	1.1	
60	7	6.3	2.7	67	9.0	0.9	

NOTA: per servizio continuo o altamente intermittente, contattare il servizio tecnico

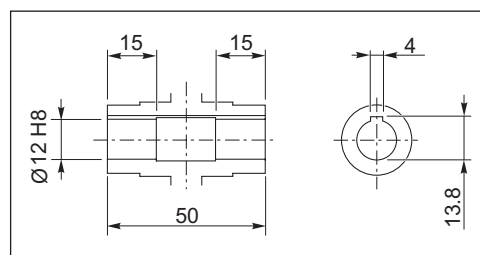
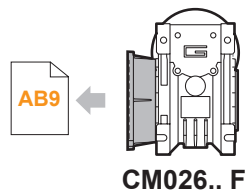
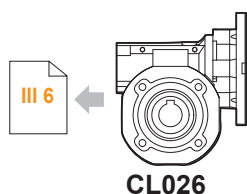
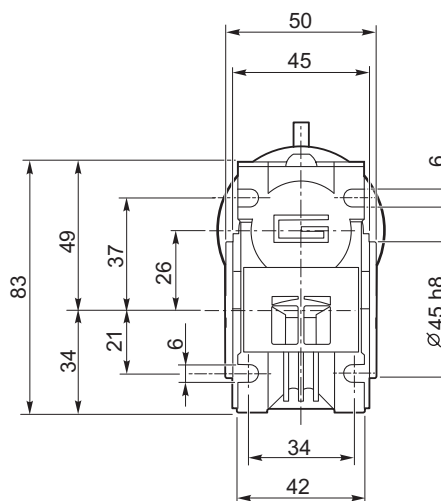
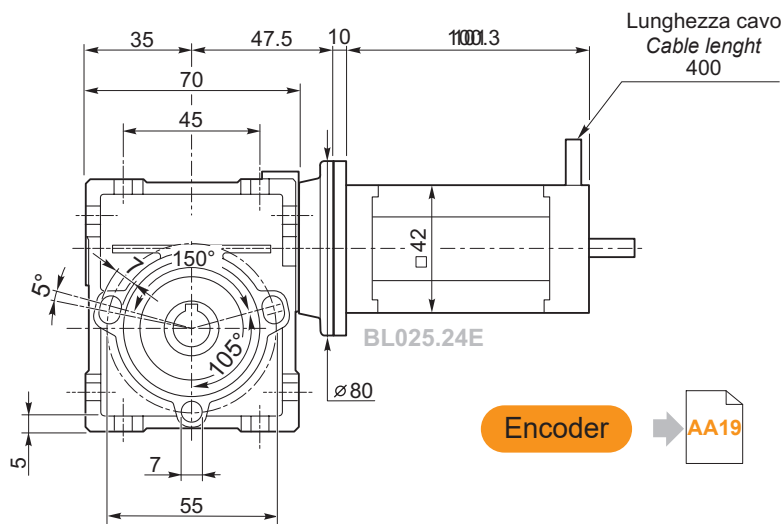
NOTE: for continuous or highly intermittent duty, please contact our technical service

NOTA: le caselle in colore grigio indicano il superamento della coppia massima sopportata dal riduttore per il servizio in S1.

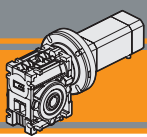
NOTE: boxes in grey indicate that maximum torque withstood by gear reducer for service in S1 is exceeded.

Tipo Type	Numero di poli Number of poles	Numero di fasi Number of phase	Tensione Rated voltage [V]	Numero di giri Rated speed [rpm]	Coppia nominale Rated torque [Nm]	Potenza nominale Rated power [W]
BL025.24E	8	3	24	4000	0.25	105
Tipo Type	Coppia massima Peak torque [Nm]	Corrente nominale Rated current [A]	Resistenza Resistance [ohm]	Induttanza Inductance [mH]	Corrente massima Peak current [A]	Peso Weight [kg]
BL025.24E	0.5	7.0	0.3	0.5	21	0.8

Azionamenti Drives



Albero lento cavo / Hollow output shaft



Motoriduttori brushless CC a vite senza fine Brushless DC wormgearmotors

CM030 con motore brushless CC

CM030 with DC brushless motor

CM030	BL032.240						n _{1MAX} [rpm]
	24V						
	n _{2MIN} [rpm]			n _{2MAX} [rpm]			
ir		M ₂ [Nm]	sf		M ₂ [Nm]	sf	
5	60	1.3	24	600	1.4	9.1	3000
7.5	40	1.9	17	400	2.1	7.1	
10	30	2.4	14	300	2.8	5.8	
15	20	3.4	10	200	4.0	4.0	
20	15	4.2	7	150	5.2	2.7	
25	12	4.9	6	120	6.2	2.4	
30	10	5.3	7	100	7.1	2.5	
40	8	6.4	5.0	75	9.0	1.8	
50	6	7.4	3.9	60	10	1.4	
60	5	8.1	3.2	50	12	1.2	
80	4	9.3	2.4	38	15	0.8	
100	3	10	2.0	30	16	0.7	

NOTA: per servizio continuo o altamente intermittente, contattare il servizio tecnico

NOTE: for continuous or highly intermittent duty, please contact our technical service

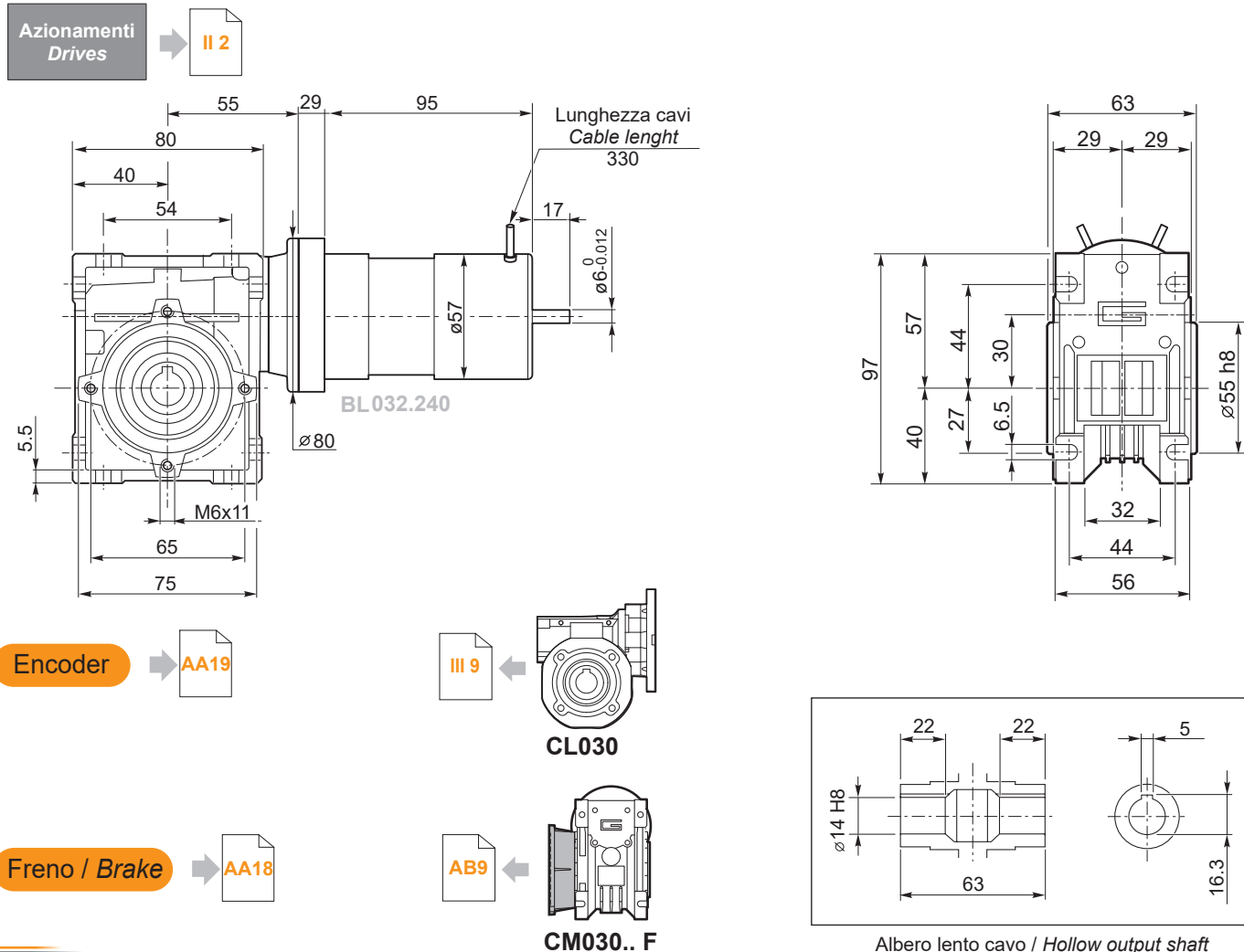
NOTA: le caselle in colore grigio indicano il superamento della coppia massima sopportata dal riduttore per il servizio in S1.

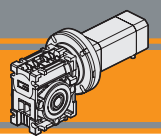
NOTE: boxes in grey indicate that maximum torque withstood by gear reducer for service in S1 is exceeded.

Tipo Type	Numero di poli Number of poles	Numero di fasi Number of phase	Tensione Rated voltage [V]	Numero di giri Rated speed [rpm]	Coppia nominale Rated torque [Nm]	Potenza nominale Rated power [W]
BL032.240	4	3	24	3000	0.32	100
Tipo Type	Coppia massima Peak torque [Nm]	Corrente nominale Rated current [A]	Resistenza Resistance [ohm]	Induttanza Inductance [mH]	Corrente massima Peak current [A]	Peso Weight [kg]
BL032.240	0.64	5.0	0.45	1.4	10.0	1.0

Nota: per alimentazione a 36Vdc si prega di contattare il servizio tecnico.

Note: for supply voltage 36Vdc please contact our technical service





CM030 con motore brushless CC

CM030 with DC brushless motor

CM030	BL043.240						
	24V						
	n ₂ MIN [rpm]			n ₂ MAX [rpm]			
ir		M ₂ [Nm]	sf		M ₂ [Nm]	sf	n ₁ MAX [rpm]
5	60	1.8	18	600	1.9	6.8	3000
7.5	40	2.5	13	400	2.8	5.3	
10	30	3.3	11	300	3.7	4.3	
15	20	4.5	7.5	200	5.4	3.0	
20	15	5.6	5.3	150	7.0	2.0	
25	12	6.6	4.4	120	8.4	1.8	
30	10	7.2	5.2	100	9.5	1.9	
40	8	8.6	3.7	75	12	1.3	
50	6	9.9	2.9	60	14	1.1	
60	5	11	2.4	50	16	0.9	
80	4	13	1.8	38	17	0.7	
100	3	14	1.5	30	16	0.7	

NOTA: per servizio continuo o altamente intermittente, contattare il servizio tecnico

NOTE: for continuous or highly intermittent duty, please contact our technical service

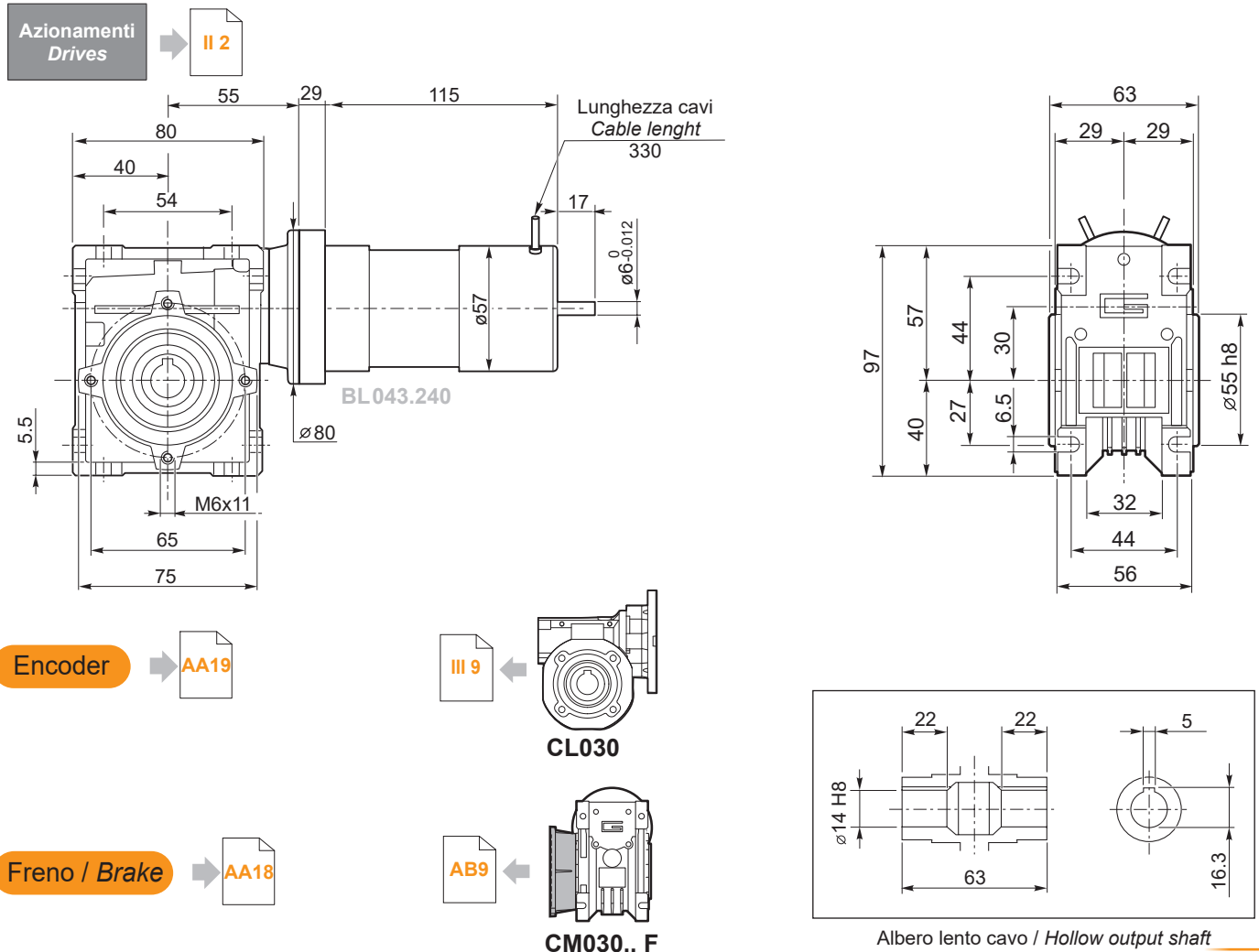
NOTA: le caselle in colore grigio indicano il superamento della coppia massima sopportata dal riduttore per il servizio in S1.

NOTE: boxes in grey indicate that maximum torque withstood by gear reducer for service in S1 is exceeded.

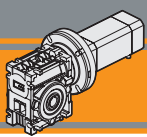
Tipo Type	Numero di poli Number of poles	Numero di fasi Number of phase	Tensione Rated voltage [V]	Numero di giri Rated speed [rpm]	Coppia nominale Rated torque [Nm]	Potenza nominale Rated power [W]
BL043.240	4	3	24	3000	0.43	130
Tipo Type	Coppia massima Peak torque [Nm]	Corrente nominale Rated current [A]	Resistenza Resistance [ohm]	Induttanza Inductance [mH]	Corrente massima Peak current [A]	Peso Weight [kg]
BL043.240	0.86	6	0.35	1.0	12.0	1.25

Nota: per alimentazione a 36Vdc si prega di contattare il servizio tecnico.

Note: for supply voltage 36Vdc please contact our technical service



IP 20
CM

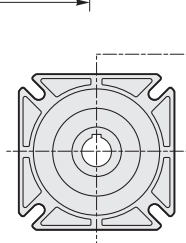
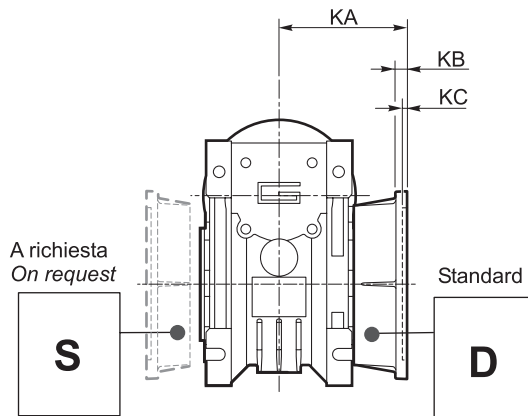
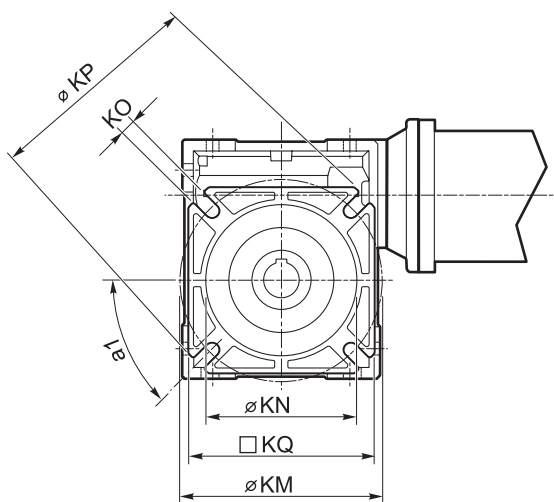


Motoriduttori brushless CC a vite senza fine Brushless DC wormgearmotors

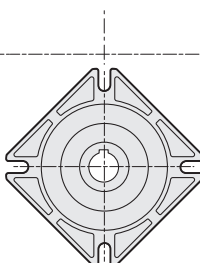
Dimensioni flange uscita

Output flange dimensions

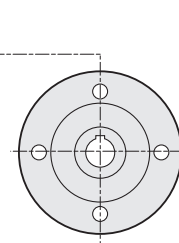
CM.../... F... Flange uscita / Output flanges



..CM026 ../.. F
..CM026 ../.. F28
..CM026 ../.. F30
..CM026 ../.. F30S
..CM030 ../.. F..



..CM026 ../.. F30C
..CM026 ../.. F30SC



..CM026 ../.. F100

	CM..F							CM..F28							CM..F30							CM..F30S ⁽¹⁾											
	a1	KA	KB	KC	KM	KN _{H8}	KO	KP	KQ	KA	KB	KC	KM	KN _{H8}	KO	KP	KQ	KA	KB	KC	KM	KN _{H8}	KO	KP	KQ	KA	KB	KC	KM	KN _{H8}	KO	KP	KQ
026 (D11)	45°	45	6	4.5	55-69	40	6.5	75	70	44	6.5	5	56-64	40	6.5	70	60	48	6.5	5	68	50	6.5	80	70	50	8.5	7	68	50	6.5	80	70
026 (D14)							(n.4)																										

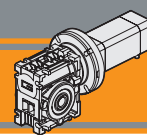
(1): F30S eseguita con F30 e distanziale di spessore 2 mm / F30S made with F30 and spacer with 2mm thickness

	CM..F30C							CM..F30SC ⁽²⁾							CM..F100										
	a1	KA	KB	KC	KM	KN _{H8}	KO	KP	KQ	KA	KB	KC	KM	KN _{H8}	KO	KP	KQ	KA	KB	KC *	KM	KN _{H7}	KO	KP	KQ
026 (D11)	-	48	6.5	7	68	50	6.5	80	70	50	8.5	7	68	50	6.5	80	70	51.5	8	2 *	86	45	6.5	100	-
026 (D14)																									

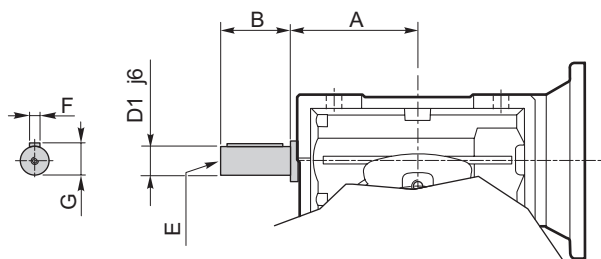
(2): F30SC eseguita con F30C e distanziale di spessore 2 mm / F30SC made with F30C and spacer with 2mm thickness

*: Centraggio maschio / Male centering diameter

CM	CM..F							CM..FB							CM..FL										
	a1	KA	KB	KC	KM	KN _{H8}	KO	KP	KQ	KA	KB	KC	KM	KN _{H8}	KO	KP	KQ	KA	KB	KC	KM	KN _{H8}	KO	KP	KQ
030	45°	54.5	6	4	68	50	6.5(n.4)	80	70	-	-	-	-	-	-	-	-	-	-	-	-	-	-	-	-



VS - Vite sporgente / *Extended input shaft*



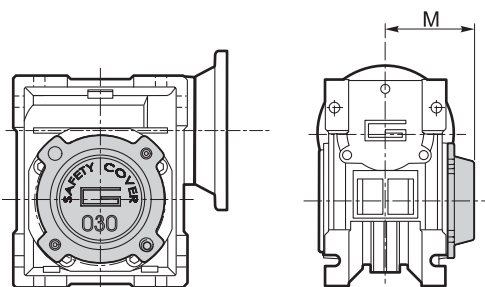
	A	B	D ₁ j6	E	F	G
CM 030	45	20	9	M4	3	10.2

Costruito su richiesta
Built on request

IP 20

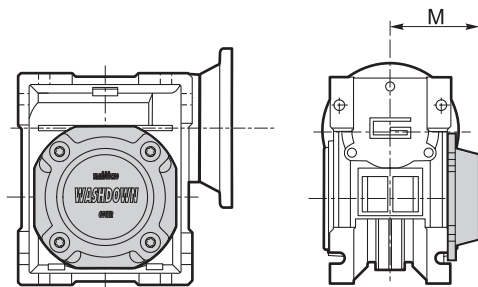
CM

SC - Safety cover

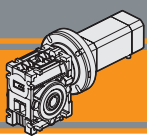


	M
CM 030	47

WD - Washdown cover



	M
CM 030	48



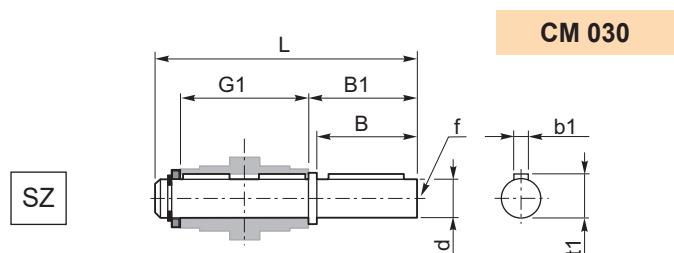
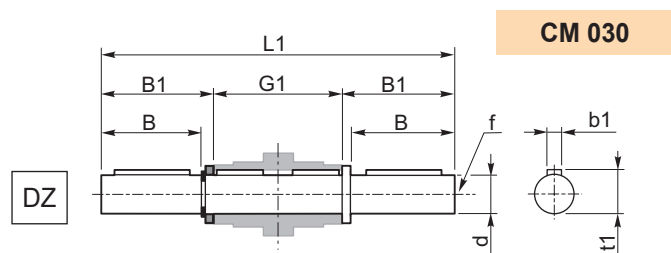
Motoriduttori brushless CC a vite senza fine Brushless DC wormgearmotors

Accessori

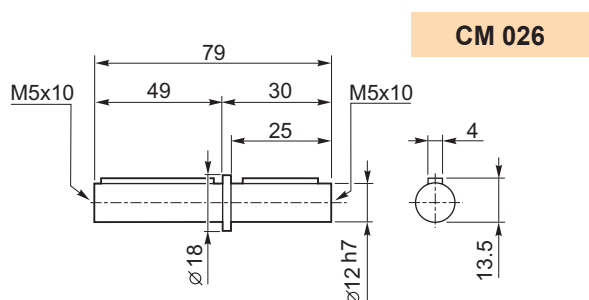
Accessories

Albero lento

Output shaft



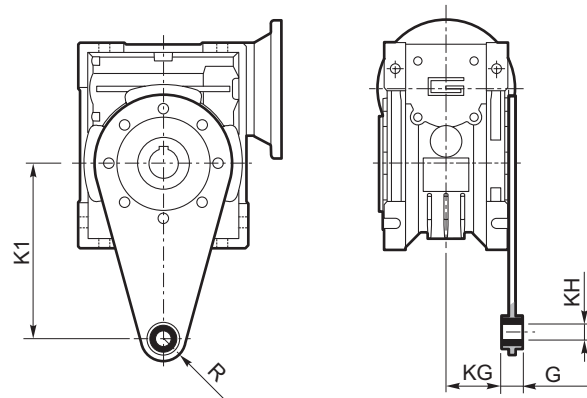
	d h7	B	B1	G1	L	L1	f	b1	t1
CM 030	14	30	32.5	63	102	128	M6	5	16



Braccio di reazione

Torque arm

	K1	G	KG	KH	R
CM 030	85	14	23	8	15



 **TRANSTECNO SRL**
HEADQUARTERS

Company subject to the management
and coordination of INTERPUMP GROUP SPA
Via Caduti di Sabbiano, 11/D-E
40011 Anzola dell'Emilia (BO)
ITALY
T+39 051 64 25 811
F +39 051 73 49 43
sales@transtecno.com
www.transtecno.com


TRANSTECNO®
the modular gearmotor
MEMBER OF INTERPUMP GROUP




 **HANGZHOU INTERPUMP
POWER TRANSMISSIONS CO LTD**
No.4 Xiuyan Road Fengdu Industry Zone
Pingyao Town Yuhang District
Hangzhou City, Zhejiang Province
311115 – CHINA
T +86 571 86 92 02 60
info-china@transtecno.cn
www.transtecno.cn

 **TRANSTECNO IBÉRICA
THE MODULAR GEARMOTOR, S.A.**
Carrer de la Ciència, 45
08840 Viladecans (Barcelona) - SPAIN
T +34 931 598 950
info@transtecno.es
www.transtecno.es

 **TRANSTECNO B.V.**
Siliciumweg 32
3812 SX Amersfoort - NETHERLANDS
T +31(0) 33 45 19 505
info@transtecno.nl
www.transtecno.nl

 **TRANSTECNO AANDRIJFTECHNIEK B.V.**
Siliciumweg 32
3812 SX Amersfoort - NETHERLANDS
T +31 (0) 33 20 47 006
info@transtecnoaandrijftechnik.nl
www.transtecnoaandrijftechnik.nl

 **MA TRANSTECNO S.A.P.I. DE C.V.**
Julián Sepúlveda Dávila #107,
Parque Industrial SG
Apodaca, Nuevo León, CP. 66640
MÉXICO
T +52 8113340920
info@transtecno.com.mx
www.transtecno.com.mx


 **TRANSTECNO USA**
8 Creek Parkway,
Boothwyn PA 19061-8136 - UNITED STATES
T + 1 (610) 4970154

TRANSTECNO USA – WEST COAST BRANCH
14561 Fryelands Blvd SE
Monroe, WA 98272 - UNITED STATES
T +1 360-863-1300
usaoffice@transtecno.com
www.transtecno.com

 **TRANSTECNO CANADA**
51 B Caldari Road Unit 10
Vaughan, ON L4K 4G3 - CANADA
T +1 905 761 0762
canadaoffice@transtecno.com
www.transtecno.com

 **TRANSTECNO INDIA**
#6A, Sipcot Industrial complex, Phase-1, Elasagiri Road
Hosur – 635126 Tamilnadu - INDIA
T +91 4344 274434
M +91 81443 88800

TRANSTECNO INDIA – NORTH BRANCH
Plot No: 3 A, Sector 2, IIE, Sidcul, Pantnagar
U.S. Nagar, Uttarakhand – 263153 - INDIA
indiaoffice@transtecno.com
www.transtecno.com

 **TRANSTECNO BRAZIL**
Rua Gilberto de Zorzi, 525 Forqueta - CEP. 95115-730
CX Postal 3544 Caxias do Sul RS – BRAZIL

TRANSTECNO BRAZIL – SÃO PAULO BRANCH
R. Mafalda Barnabe Soliane, 314 – CEP. 13347-610
Indaiatuba, São Paulo - BRAZIL
T +55 19 3437 2520

TRANSTECNO BRAZIL – PORTO ALEGRE BRANCH
Rua Dr. Freire Alemão 155 / 402 - CEP. 90450-060
Auxiliadora Porto Alegre RS - BRAZIL
T +55 51 4042 0916
M +55 51 811 45 962
braziloffice@transtecno.com
www.transtecno.com.br

 **INTERPUMP ANTRIEBSTECHNIK GMBH**
Büro Stuttgart - GERMANY
T +49 (0)171 4781909
germanoffice@transtecno.com
www.transtecno.com

 **SALES OFFICE OCEANIA**
Unit 5, 12 Nyholt Drive, Yatala 4207
Queensland - AUSTRALIA
T +61 07 3800 0103
M +61 04 38060997

UNIT 9, 94 Boundary Rd, Sunshine West 3020
Victoria - AUSTRALIA
T +61 9312 4722
oceaniaoffice@transtecno.com
www.transtecno.com.au