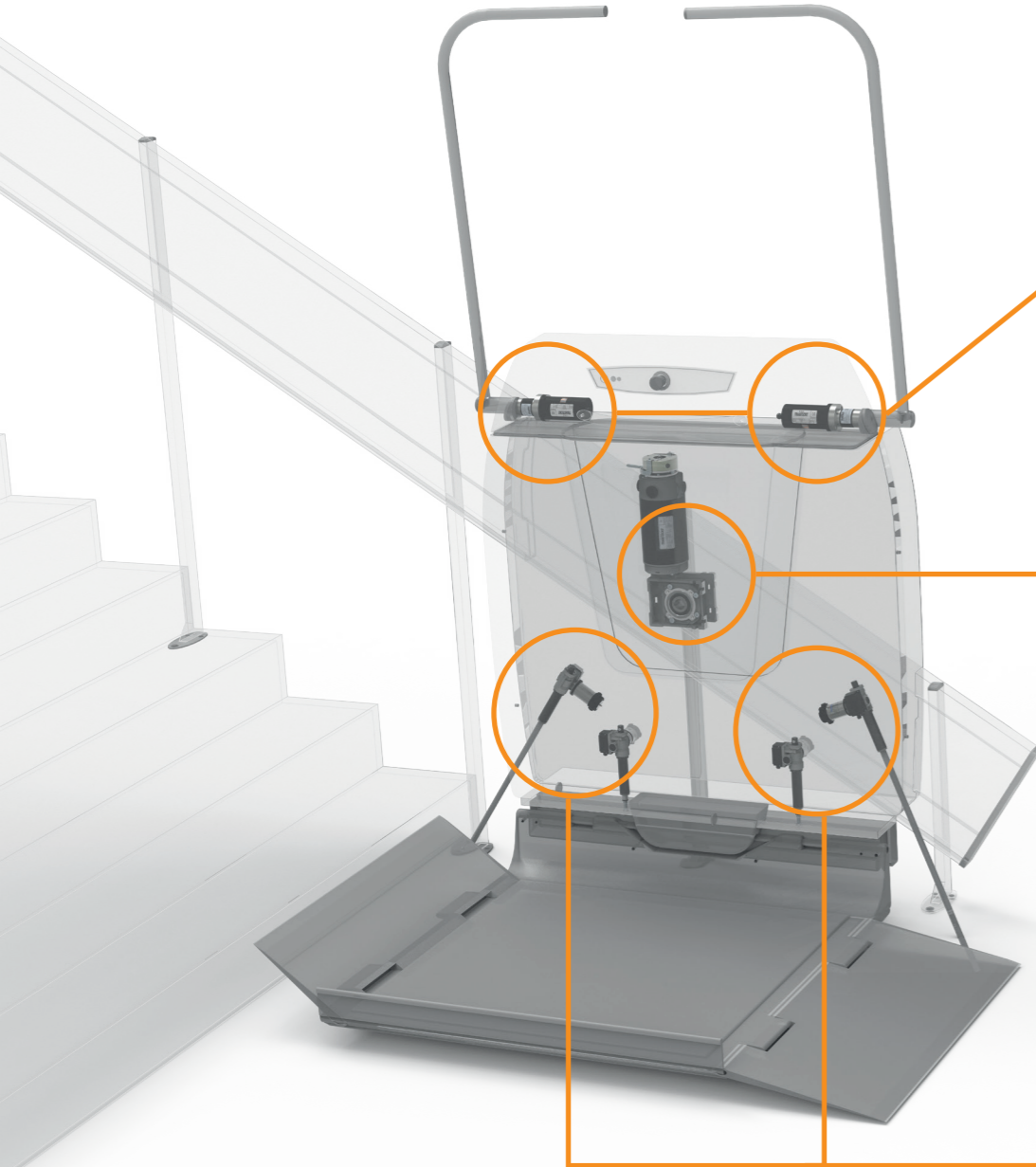


REDUCED MOBILITY SOLUTIONS

PLATFORM STAIR LIFT



ECP Planetary DC gearmotors

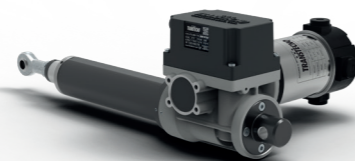
- Low voltage power supply 12/24 Vdc
- Motor power ratings available from 30 up to 800W S2
- Suitable for encoder assembly
- Coaxial arrangement of the input and output
- **COMPACT** design
- Permanent grease oil long-life lubrication
- Can be installed in all mounting position



ECM - ECL DC Wormgearmotors

- Low voltage power supply 12/24 Vdc
- Motor power ratings available from 100 to 800W S2
- **COMPACT** size Neodymium magnets DC motors available
- Die-cast aluminum housing
- Permanent synthetic oil long-life lubrication
- Suitable for brake assembly

AT Linear actuators



- Die cast aluminium housing
- Worm gear pair with case hardened ground worm (16MnCr5)
- G-CuSn12 bronze worm wheel
- Trapezoidal screw with ISO 2901...2904 thread in C45 rolled steel
- Chromed steel translating rod
- Protecting tube with specific profile in extruded and anodized aluminium
- **COMPACT** size Neodymium magnets low voltage DC motors available

CHAIR STAIRLIFT

