

INTERPUMP GROUP

GEARBOXES

Product Range Overview 2024



MEMBERS OF INTERPUMP GROUP



109 Companies

34 Countries

11.009 Collaborators *

Annual turnover of **2.240** million euro *

Interpump Group S.p.A. is the world's largest manufacturer of high-pressure piston pumps for applications in numerous sectors, as well as one of the global players in the hydraulics sector. The Interpump Group was founded in 1977 in S. Ilario d'Enza (RE), by Fulvio Montipò.

* Data at 31/12/23 - Interpump Group

INTERPUMP GROUP DIVISIONS

WATER - JETTING

High and ultra-high pressure pumps



Flow handling machinery



HYDRAULICS

Cylinders



Orbital motors and steering solutions



Power take-offs



Valves & Distributors



Hoses, pipes and fittings



Components



Gearboxes



22 Branches in 14 Countries

82 Distributors in 36 Countries

607 Employees *

Annual turnover of **260 million** euro*

* Data at 31-12-2023

INTERPUMP GROUP - GEARBOXES



TRANSTECNO

Headquarters
in Anzola dell'Emilia (BO) Italy

**FA REGGIANA
RIDUTTORI**

Headquarters
in San Polo d'Enza (RE) Italy



INTERPUMP GROUP - GEARBOXES

WWW.TRANSTECNO.COM

WWW.REGGIANARIDUTTORI.COM

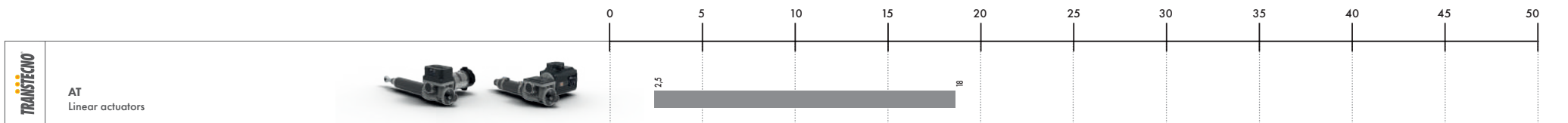
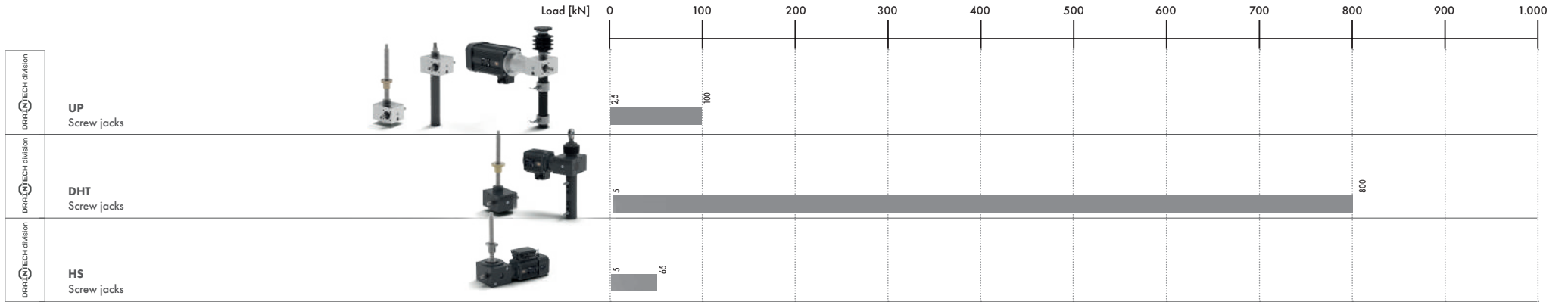
Torque [Nm] 0 3.500 10.000 100.000 200.000 1.000.000 5.000.000 10.000.000

TRANSTECNO	CM-CMP CL-CLP CMM CMPU Wormgearmotors		T2 Nom 15 1700								
TRANSTECNO	KFT105-FT ATS ITS Helical parallel gearmotors		T2 Nom 65 600 3.200								
TRANSTECNO	CMB - ITB Helical bevel gearmotors		T2 Nom 65 500 3.500								
TRANSTECNO	CMG - ITH Helical in-line gearmotors		T2 Nom 70 500 3.500								
TRANSTECNO	BLDC DC Gearmotors		T2 Nom 15 15 800 800								
TRANSTECNO	Poultryteco Fireteco Car Wash-Tecno		T2 Nom 30 40 90 1.700 1.700								
RESOPLAN	PLANETARY 2000 Series Plus Series Modular planetary reduction gears		T2 max 1.200	SERIES 2000 26.500 37.000	SERIES PLUS 10.000.000						
RESOPLAN	WHEEL & TRACK GEARS RRWD RRTD Wheel gears for tyred and tracked vehicles and tracked vehicles		T2 max 1.000	RRWD 2.000 17.000	RRTD 50.000						
RESOPLAN	SLEWING & WINCH Slewing Series W Series Gearboxes for slewing and winch.		T2 max 8.400 8.500	SLEWING 560.000	W 5.370.000						
RESOPLAN	HELICAL & COMBINED Helical, bevel helical and combined line gears		T2Nom 2.000	HELICAL GEARS 128.500	COMBINED 3.950.000 4.300.000						
TRANSTECNO	V SERIES Planetary reduction gears integrated with worm or helical gearboxes		T2Nom 1.200	26.500							
BERWA	RT Complete range of right angle gearboxes for hydraulic motors, mainly designed for manure spreader application		T2Nom 450	10.000							

INTERPUMP GROUP - GEARBOXES



WWW.TRANSTECNO.COM



Stock products

Torques up to 1.000 Nm
8.800 lb-in

Alu

AC

IEC & Nema

Ex CE cRU[®] US

IP66
TRANSTECNO

NEW



Stock products

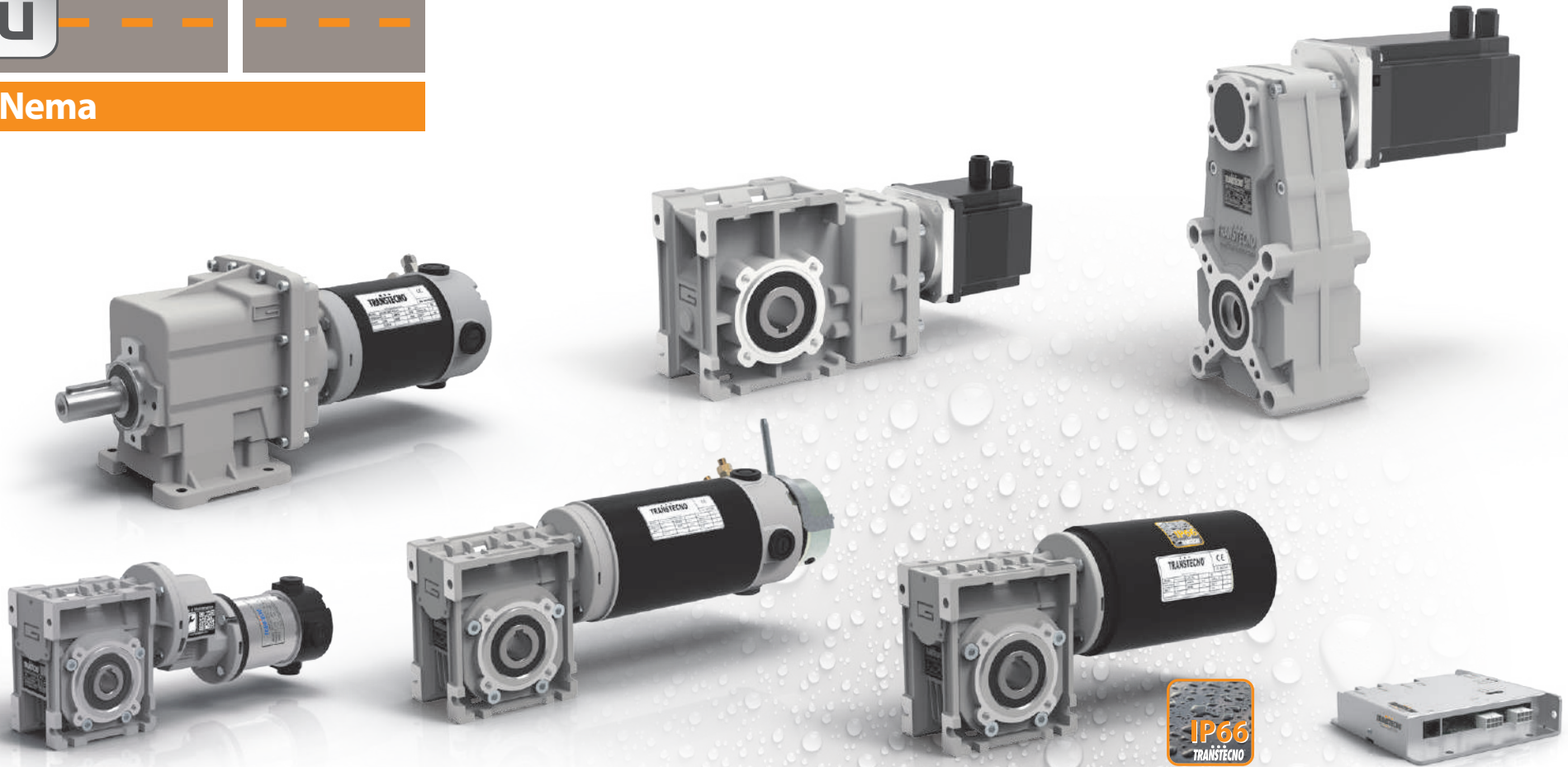
Torques up to 800 Nm
7.100 lb-in

Alu

DC

BLDC

IEC & Nema



Stock products

Torques up to 3.500 Nm
31.000 lb-in



AC

IEC & Nema



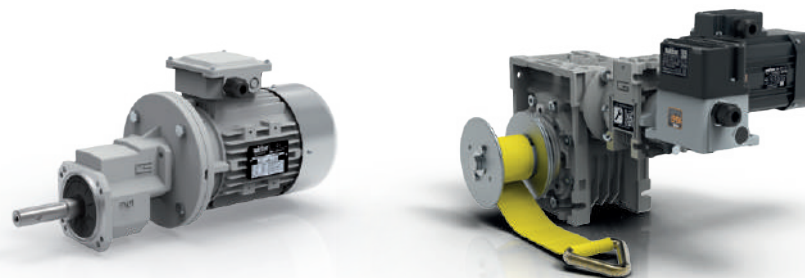
NEW



Products by market

Poultry&Pig Tecno

The gearmotors for farm equipment



Fire Tecno

The gearmotors for bioenergy boilers



Car-Wash Tecno

The gearmotors for car wash equipment

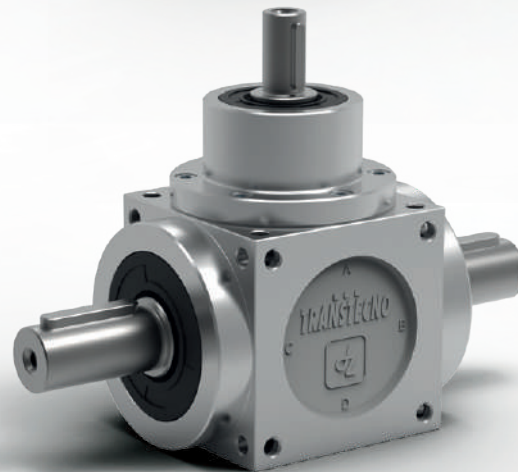
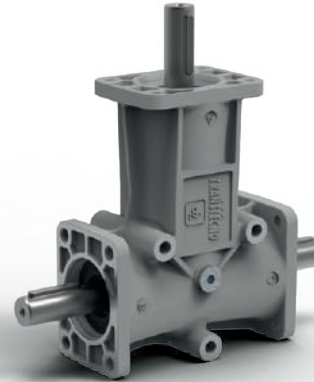
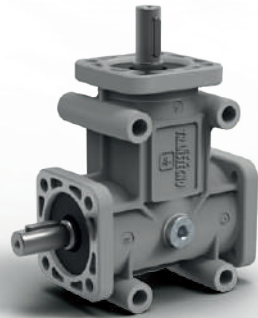


Stock products

Load up to 4.300 Nm
38.200 lb-in



Right-angle bevel gearboxes



Stock products

Load up to 1000 kN
224.800 lbf



Screw jacks



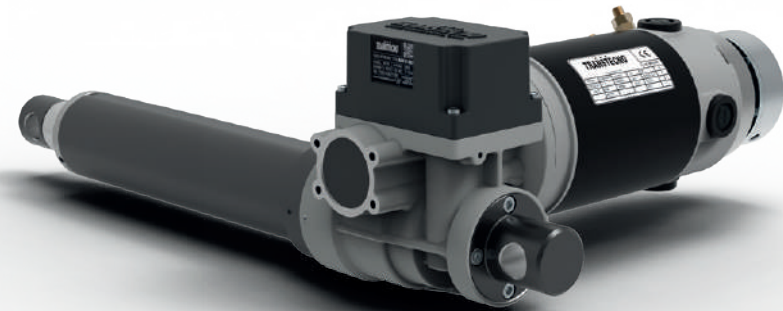
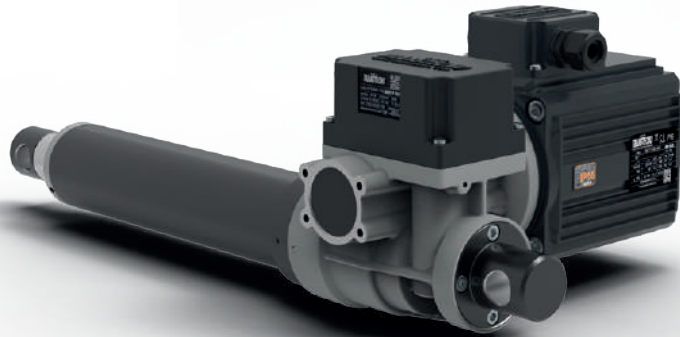
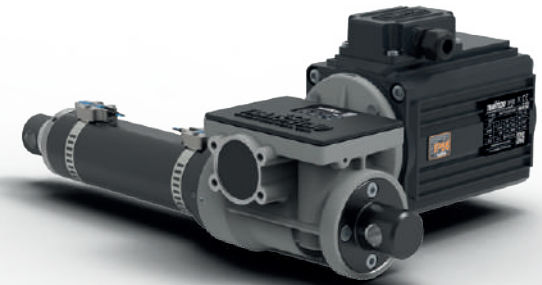
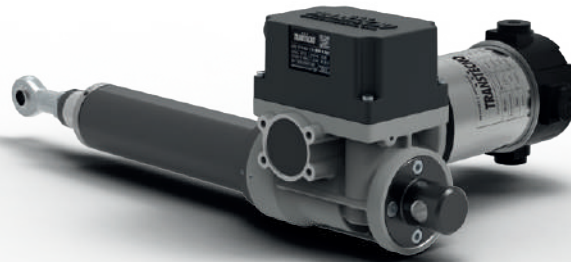
Stock products

Load up to 18 kN
4.046 lbf

Linear actuators

NEW

AT Series



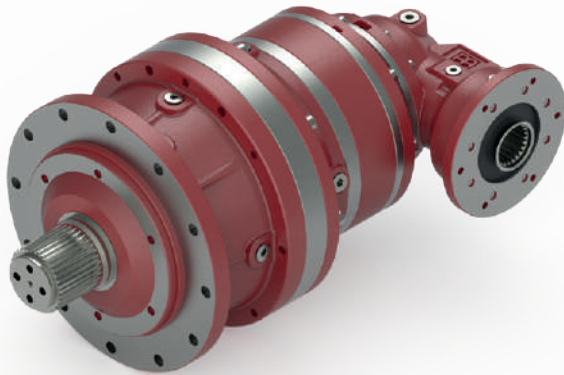
PLANETARY

Modular planetary reduction gears

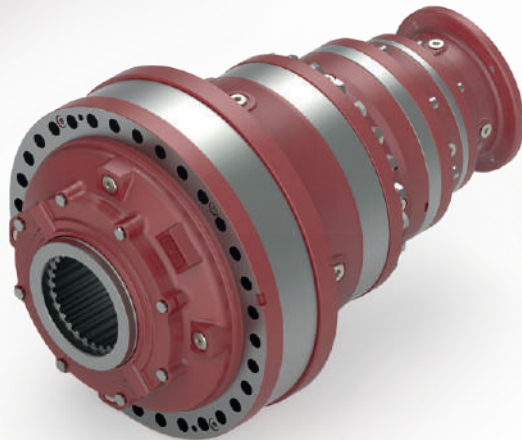
2000 SERIES - Torques (T2 max) up to 26.500 Nm
235.000 lb-in

PLUS SERIES - Torques (T2 max) up to 10.000.000 Nm
88.508.000 lb-in

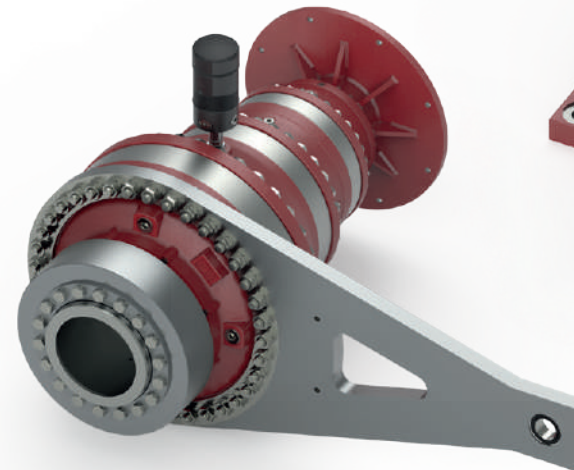
RA



RR



RR SHAFT MOUNTED



RR FOOT MOUNTED



Our reducers are available with DC/AC/Traction/Brushless electric motor inputs on request

WHEEL DRIVES

Wheel gears for tyred and tracked vehicles

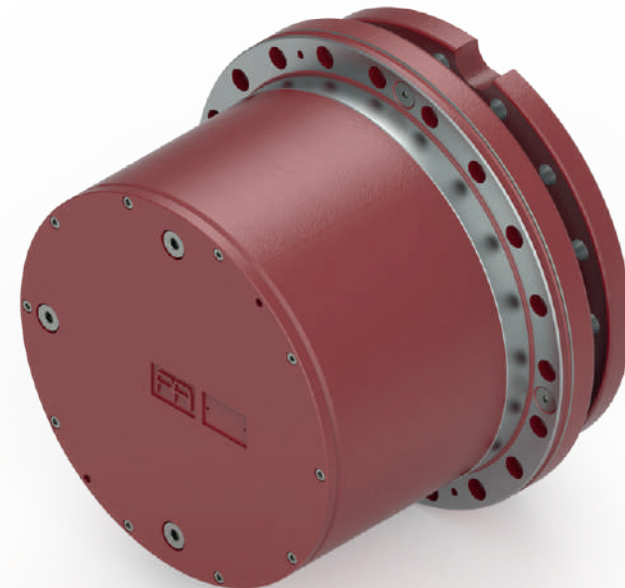
RRWD - Torques (T2 max) up to 17.000 Nm
151.000 lb-in

RRTD - Torques (T2 max) up to 50.000 Nm
443.000 lb-in

RRWD



RRTD



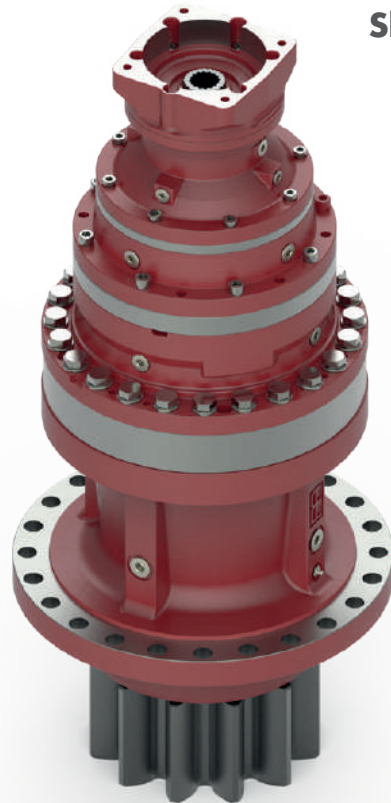
Our reducers are available with DC/AC/Traction/Brushless electric motor inputs on request

SLEWING & WINCH

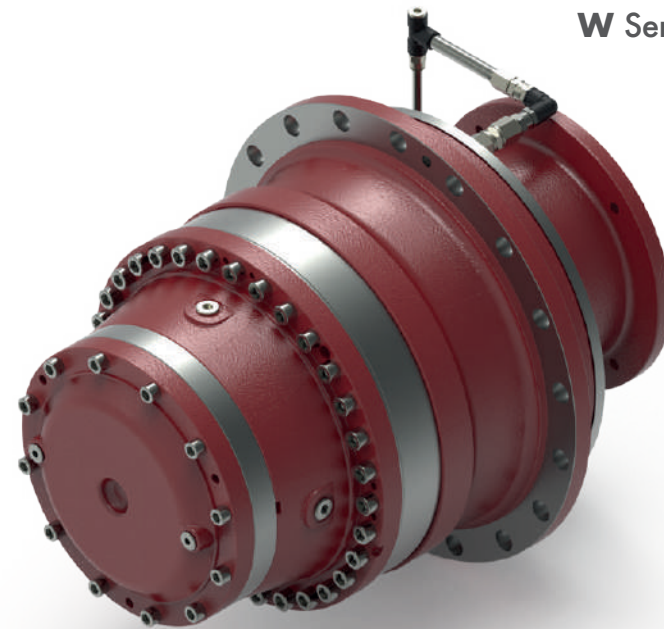
Gearboxes for slewing and winch

Slewing Series - Torques (T2 max) up to 560.000 Nm
5.071.500 lb-in

W Series - Torques (T2 max) up to 537.000 Nm
4.956.500 lb-in



Slewing Series



W Series



Our reducers are available with
DC/AC/Traction/Brushless electric motor inputs on request

HELICAL & COMBINED

Helical, bevel helical and combined line gears

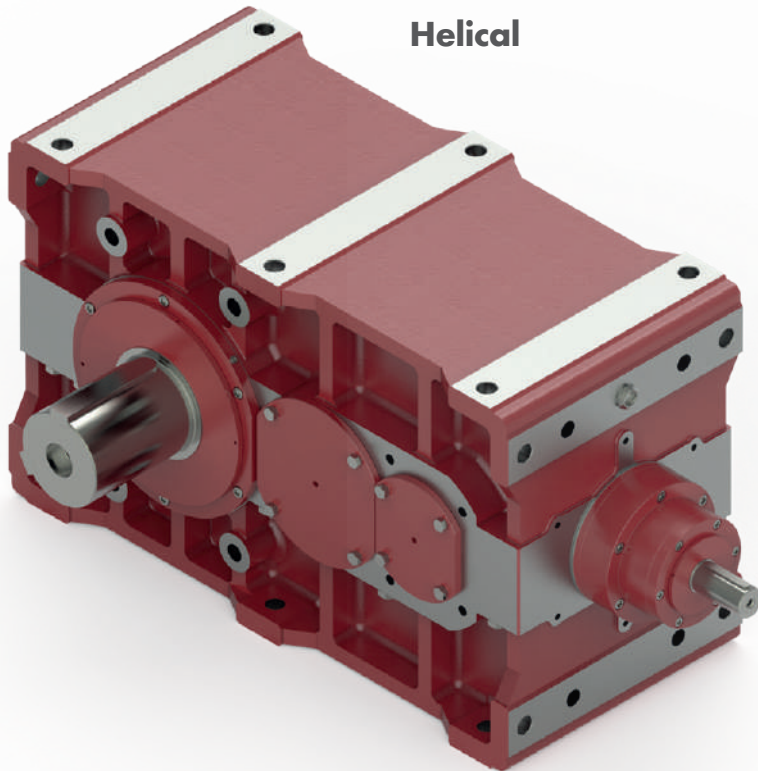
HELICAL - Torques (T2 Nom) up to 128.500 Nm

1.137.400 lb-in

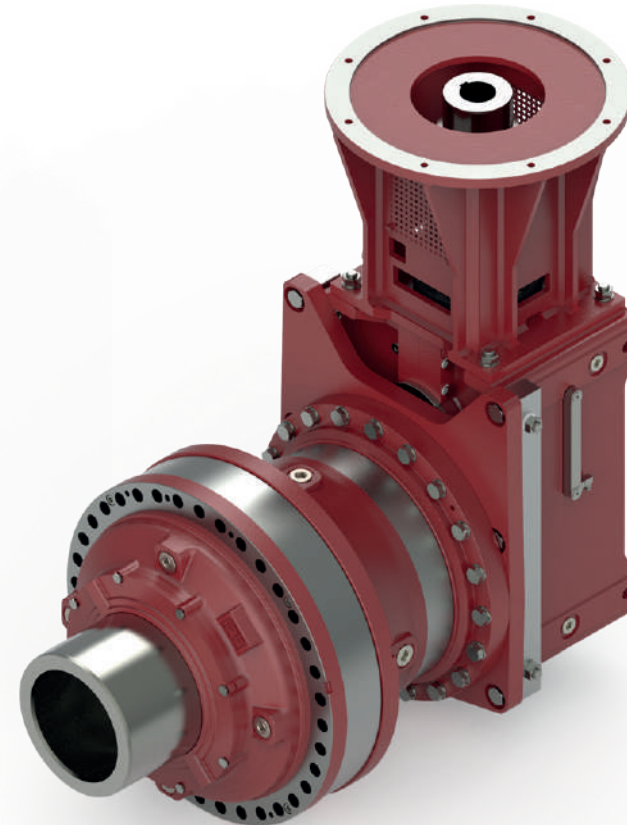
COMBINED - Torques (T2 max) up to 4.300.000 Nm

38.059.000 lb-in

Helical



Combined



Our reducers are available with DC/AC/Traction/Brushless electric motor inputs on request

RT SERIES

**RIGHT ANGLE GEARBOXES FOR
HYDRAULIC MOTORS, MAINLY DESIGNED
FOR MANURE SPREADER APPLICATION**



APPLICATIONS



HEAVY INDUSTRY



MARINE & OFFSHORE



AERIAL WORK PLATFORMS



SUGAR INDUSTRY

AGRICULTURE



FORESTRY



MATERIAL HANDLING



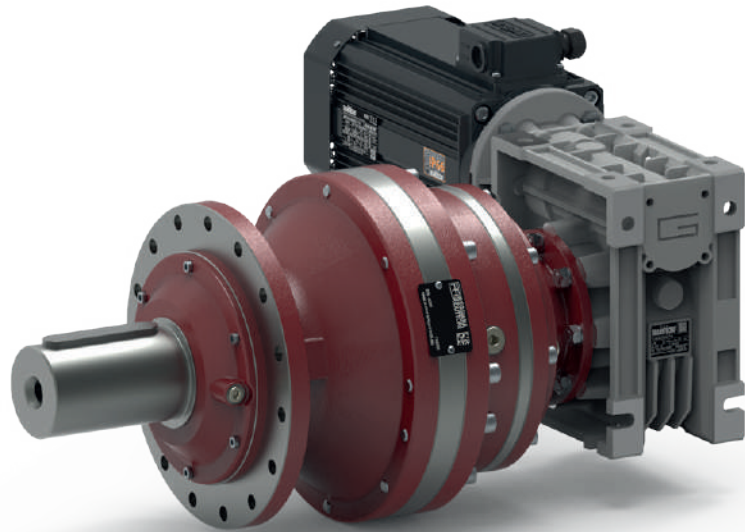
MINING



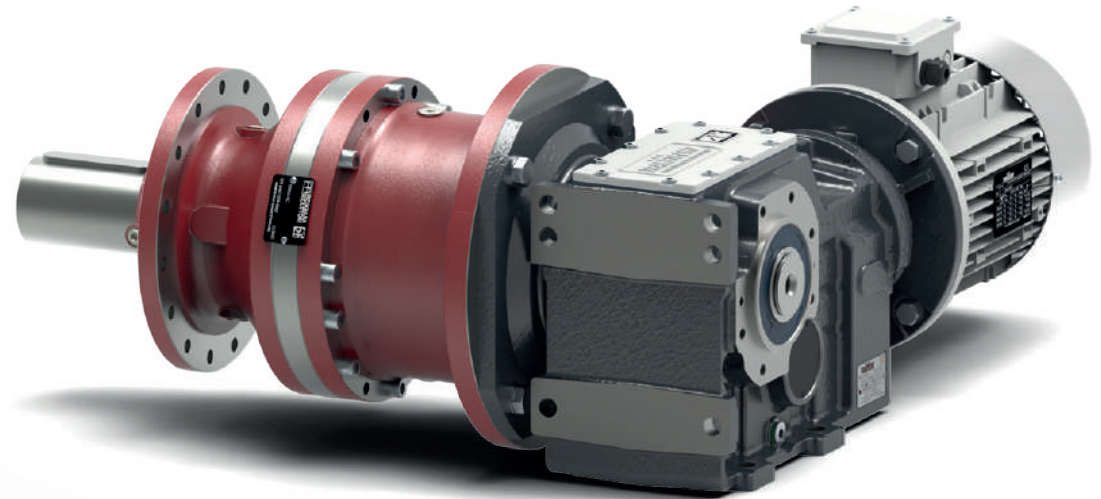
Torques (T2 Nom) up to 26.500 Nm
235.000 lb-in

RR CM/CMB/ITB

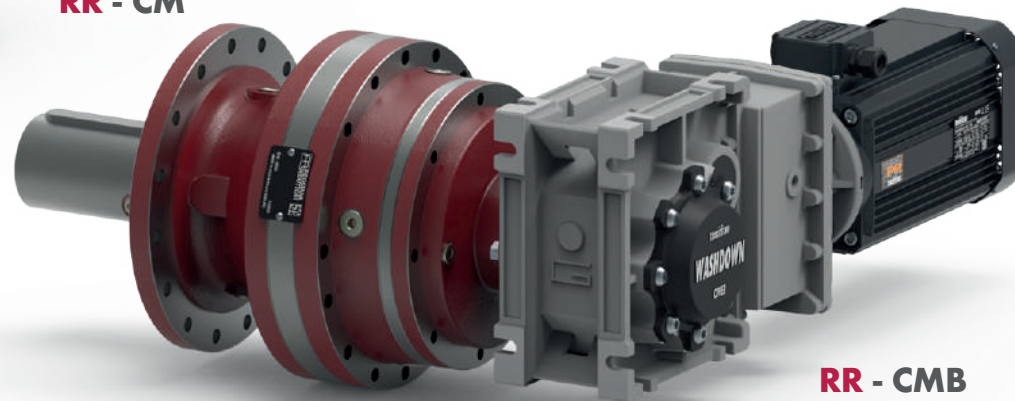
PLANETARY REDUCTION GEARS INTEGRATED WITH
WORM OR HELICAL BEVEL GEARBOXES



V Series
RR - CM



RR - ITB



RR - CMB



REGGIANA RIDUTTORI SRL | HEADQUARTERS
Via Martiri di Marzabotto 7
42020 - S. Polo D'Enza (RE) ITALY
T +39 0522 259111 | F +39 0522 874321
info@reggianariduttori.com
www.reggianariduttori.com



TRANSTECNO SRL | HEADQUARTERS
Via Caduti di Sabbiano 11 D/E
40011 - Anzola dell'Emilia (BO) ITALY
T +39 051 6425811 | F +39 051 734943
sales@transtecno.com
www.transtecno.com

INTERPUMP GROUP - GEARBOXES

RR USA INC. - HEADQUARTERS

8 Creek Parkway BOOTHWYN, PA
19061 - USA
T: +1 (610) 497.0154
info@rrusainc.com
www.rrusainc.com

RR USA INC. - WEST COAST BRANCH

14561 Fryelands Blvd SE MONROE, WA
98272 - USA
T: +1 (360) 863.1300
ksowell@rrusainc.com
www.rrusainc.com

RR USA INC. - MIDWEST BRANCH

148 Wisconsin Ave. Suite 210
WAUKESHA, WI 53186 - USA
T: +1 (262) 547.6007
rrusa@att.net
www.rrusainc.com

RR CANADA INC

51B Caldari Road Unit 10
L4K 4G3 VAUGHAN, ON - CANADA
T: +1 905 761.0762
info@rrcanadainc.com
www.rrcanadainc.com

RR SLOVAKIA - AKCIOVA SPOLOCNOST

NA STEPNICI 1 ZVOLEN
960 01 - SLOVAKIA
T: +421 45 5479713
info@rrslovakia.sk
www.reggianariduttori.com

RR SOUTH AFRICA - Business Developer

18 Joe Halim Rd Eldorado Park Ext 6
Johannesburg 1811 - SOUTH AFRICA
T: +27 11 342 5290
nadiem@engmc.co.za
www.reggianariduttori.com

RR FRANCE SARL

Zac de la Baudiniere
Thouare Sur Loire - 44470 FRANCE
T: +33 02 51 85 92 72
rrfrance@rrfrance.fr
www.rrfrance.fr

RR HOLLAND

Energieweg 34 - Oosterhout , CG
4906 - NETHERLANDS
T: +31 0162 456397
info@rrholland.nl
www.rrholland.nl

RR PACIFIC

Unit 1, 2 Access Way Carrum Downs,
Victoria - 3201 AUSTRALIA
T: +61 3 9775 1077
info@rrpacific.com
www.rrpacific.com

TRANSTECNO IBÉRICA THE MODULAR GEARMOTOR, S.A.

Carrer de la Ciència , 45 - 08840
Viladecans (Barcelona) SPAIN
T +34 931 598 950
info@transtecno.es
www.transtecno.es

TRANSTECNO B.V.

Siliciumweg 32
3812 SX Amersfoort - NETHERLANDS
T +31(0) 33 45 19 505
info@transtecno.nl
www.transtecno.nl

TRANSTECNO AANDRIJFTECHNIEK B.V.

Siliciumweg 323812 SX Amersfoort
NETHERLANDS
T +31 (0) 33 20 4 7 006
info@transtecnoaandrijftechnik.nl
www.transtecnoaandrijftechnik.nl

MA TRANSTECNO S.A.P.I. DE C.V.

Julián Sepúlveda Dávila #107,
Parque Industrial SG
Apodaca, Nuevo León, CP. 66640
MÉXICO
T +52 8113340920
info@transtecno.com.mx
www.transtecno.com.mx

HANGZHOU INTERPUMP POWER TRANSMISSIONS CO LTD

No.4 Xiuyan Road Fengdu Industry Zone
Pingyao Town Yuhang District
Hangzhou City, Zhejiang Province
311115 - CHINA
T +86 571 86 92 02 60
info-china@transtecno.com
www.transtecno.cn

TRANSTECNO SALES OFFICE OCEANIA

Unit 5, 12 Nyholt Drive, Yatala
4207 Queensland - AUSTRALIA
T +61 07 3800 0103
M +61 04 38060997
oceaniaoffice@transtecno.com
www.transtecno.com.au

INTERPUMP ANTRIEBSTECHNIK TRANSTECNO - RR

Vertriebsbüro Stuttgart - GERMANY
T +49 (0)171 4781909
jonkmans@interpump-antriebstechnik.com
www.transtecno.com
www.reggianariduttori.com

BRAZIL BRANCH OFFICE

TRANSTECNO - RR
Rua Gilberto de Zorzi, 525 Forqueta
CEP. 95115-730
CX Postal 3544 Caxias do Sul RS BRAZIL

BRAZIL BRANCH OFFICE SÃO PAULO TRANSTECNO - RR

R. Mafalda Barnabe Soliane , 314
CEP. 13347-610
Indaiatuba, São Paulo BRAZIL
T +55 19 3437 2520

BRAZIL BRANCH OFFICE PORTO ALEGRE TRANSTECNO - RR

Rua Dr. Freire Alemão 155 / 402 CEP.
90450 060
Auxiliadora Porto Alegre RS BRAZIL
T +55 51 4042 0916 M +55 51 811 45 962
braziloffice@transtecno.com
www.transtecno.com.br
www.reggianariduttori.com

INDIA BRANCH OFFICE TRANSTECNO - RR

#6A, Sipcot Industrial complex
Phase 1,Elasagiri Road Hosur
635126 Tamilnadu INDIA

NORTH INDIA BRANCH OFFICE TRANSTECNO - RR

Plot No: 3 A, Sector 2, IIE,
Sidcul Pantnagar U.S. Nagar, Uttarakhand
263153 INDIA
T +91 4344 274434
M +91 81443 88800
indiaoffice@transtecno.com
www.transtecno.com
www.reggianariduttori.com