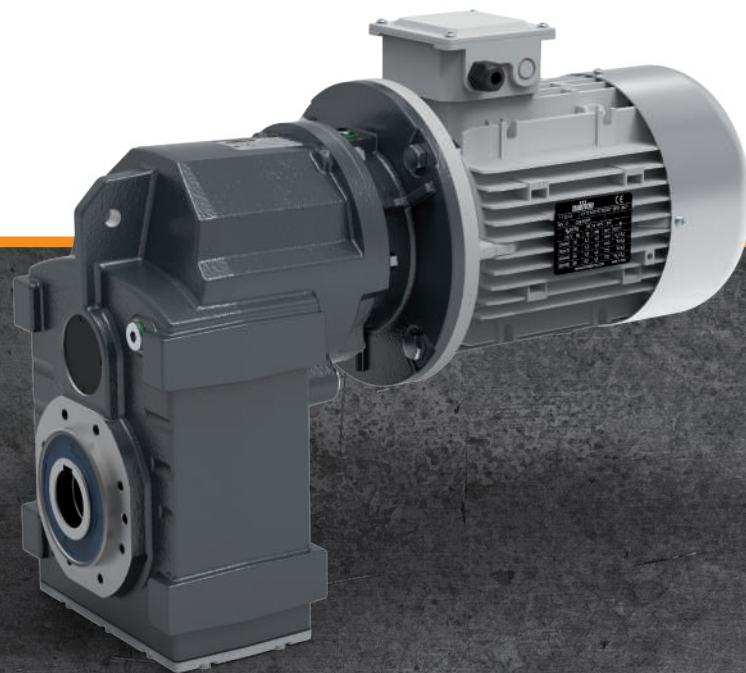
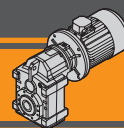


平行轴式减速电机
Helical parallel gearmotors



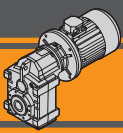


		页 Page
索引	Index	
技术特征	<i>Technical features</i>	D2
类型	<i>Versions</i>	D2
选型	<i>Classification</i>	D3
运转方向	<i>Direction of rotation</i>	D3
代号说明	<i>Symbols</i>	D4
润滑油	<i>Lubrication</i>	D4
径向负荷	<i>Radial loads</i>	D6
技术参数	<i>Technical data</i>	D8
尺寸参数	<i>Dimensions</i>	D18
附件	<i>Accessories</i>	D25

该样本为最新版本，可替代以往的任何版本及修订版。如果您是通过非正式渠道取得，不能保证是最新内容，最新版可在本公司网站上查阅 www.transtecno.com。

This section replaces any previous edition and revision. If you obtained this catalogue other than through controlled distribution channels, the most up to date content is not guaranteed. In this case the latest version is available on our web site www.transtecno.com





ITS 平行轴式减速电机 Helical parallel gearmotors

技术特征

ITS系列减速电机适用于重负载行业，铁壳箱体和模块化的输入输出组件增强了其应用稳定性。

ITS系列的主要特征：

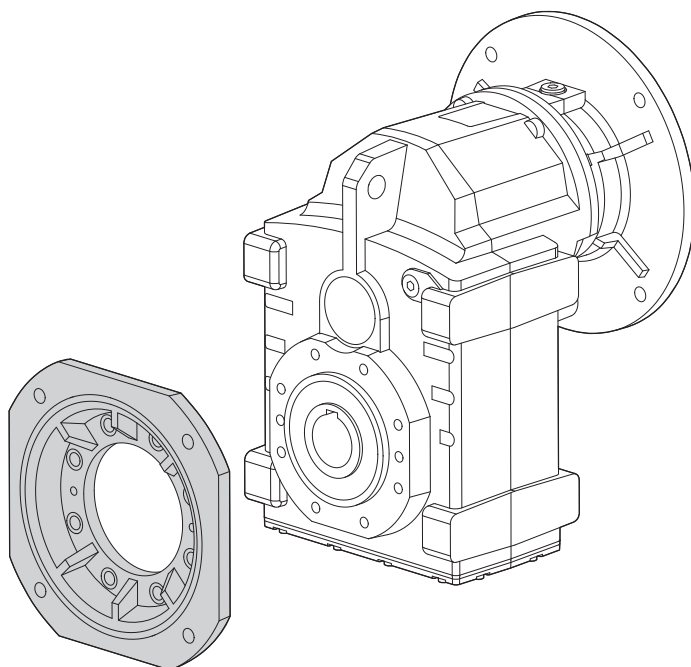
- 高强度的铸铁箱体；
- 高度模块化；
- 矿物油；
- 空心输入轴连接电机；
- 表面喷塑，RAL7016平均厚度0.10-0.15mm。

Technical features

The ITS gearmotors are intended for heavy duty applications. The robust one pieces casing of the main housing and the modular design of input and output sets increase application flexibility.

The main features of ITS range are:

- Robust cast iron housings
- High degree of modularity
- Lubrication with mineral oil
- Coupled to motor with input coupling;
- Epoxy powder coating RAL 7016 average thickness 0,10 – 0,15 mm.



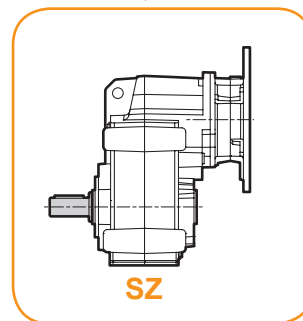
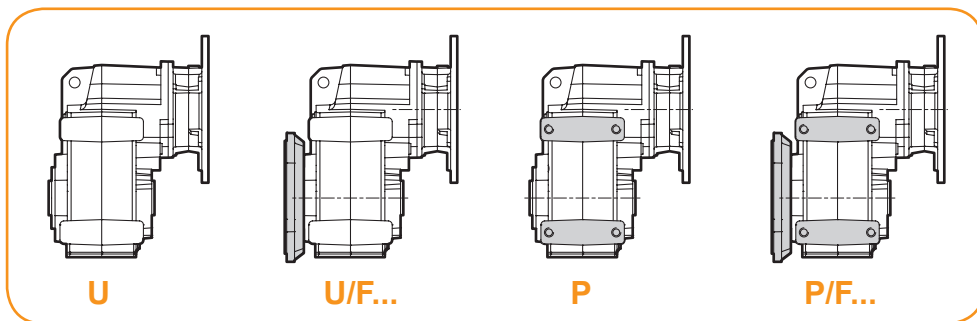
类型

Versions

ITS...

减速机类型
Gearbox Version

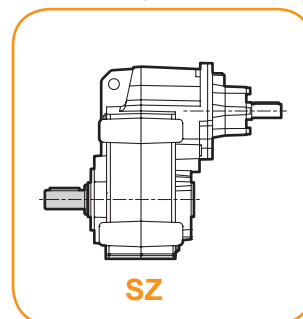
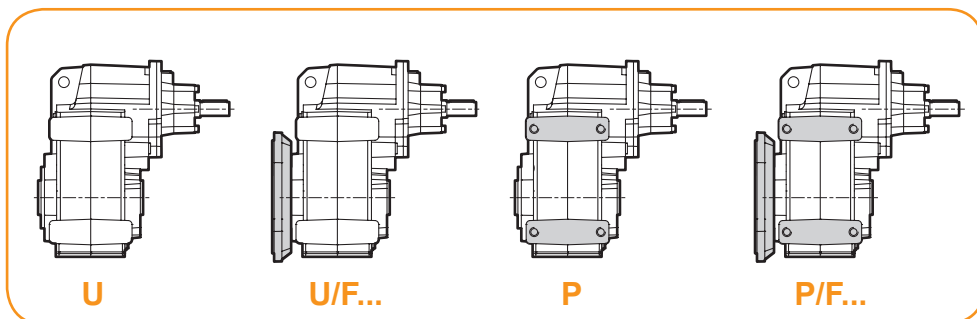
输出轴
Output shaft

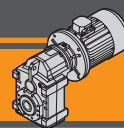


ITSIS...

减速机类型
Gearbox Version

输出轴
Output shaft





选型

Classification

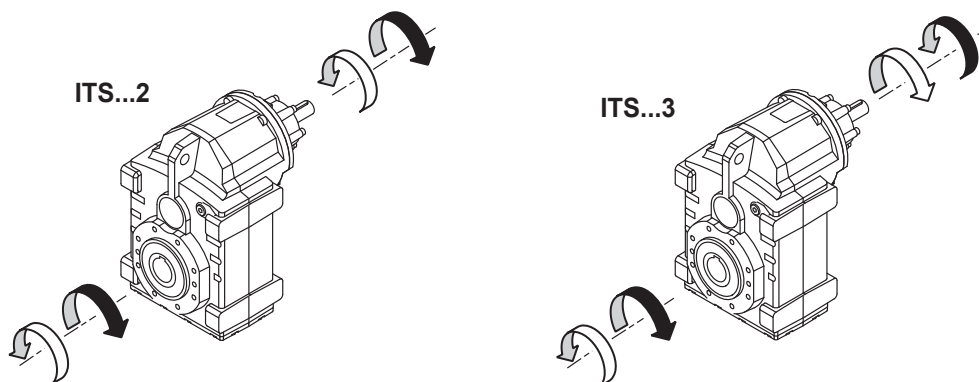
减速机 / GEARBOX										
ITS	92	2	U	22.92	D40	132	B5	SZ	M1	CW
型号 Type	规格 Size	级数 Stages	减速机型式 Version	速比 Ratio	输出轴 Output shaft	IEC 	法兰型号 Version	实心输出轴 Solid outout shaft	安装位置 Mounting position	逆止装置 Backstop device
	92 93 94	2 3	U... U/F... P... P/F...	见表格 see tables	D... 标准 G... 锁紧盘 shrink disc	80.. — 180..	B5 B14	SZ	M1 (B3) M2 (V6) M3 (B8) M4 (V5) M5 (B7) M6 (B6)	CW CCW

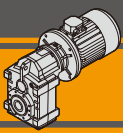
减速机 / GEARBOX							
ITSIS	92	2	U	22.92	D40	SZ	M1
型号 Type	规格 Size	级数 Stages	减速机型式 Version	速比 Ratio	输出轴 Output shaft	实心输出轴 Solid outout shaft	安装位置 Mounting position
	92 93 94	2 3	U... U/F... P... P/F...	见表格 see tables	D... 标准 G... 锁紧盘 shrink disc	SZ	M1 (B3) M2 (V6) M3 (B8) M4 (V5) M5 (B7) M6 (B6)

电机 / MOTOR						
5,5 kW	4p	3ph	230/400V	50Hz	T1	
功率 Power	极数 Poles	相数 Phases	电压 Voltage	频率 Frequency	接线盒位置 Terminal box pos.	
见表格 see tables	2p 4p 6p 8p	1ph 3ph	230/400V 220/380V ... 230V	50Hz 60Hz		

旋转方向

Direction of rotation





代号说明

Symbols

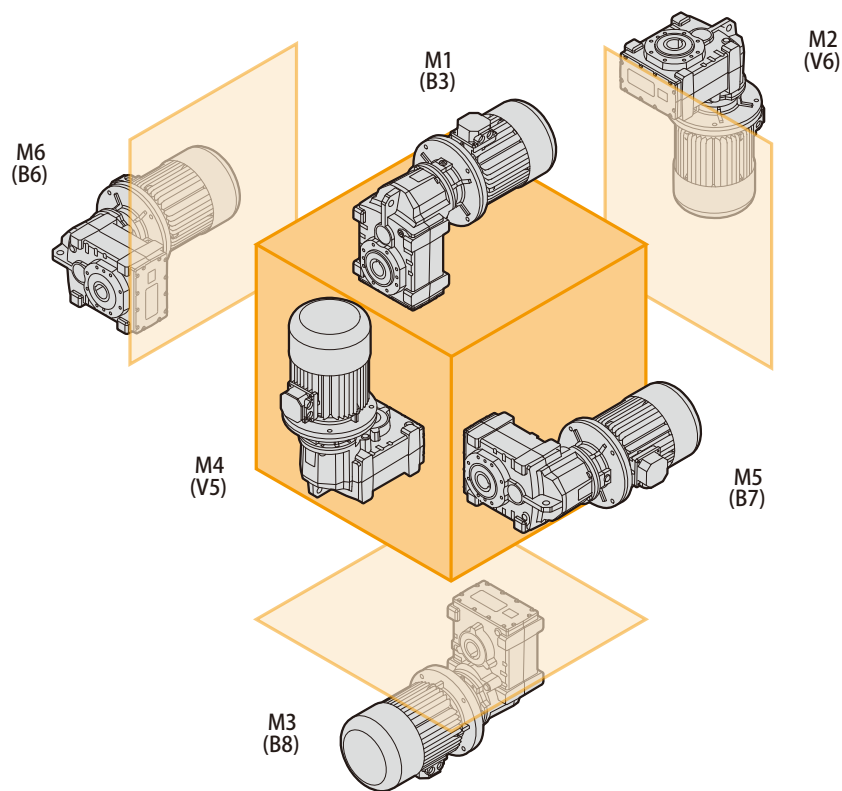
n_1	[min^{-1}]	输入转速 / <i>Input speed</i>
n_2	[min^{-1}]	输出转速 / <i>Output speed</i>
i		速比 / <i>Ratio</i>
P_1	[kW]	输入功率 / <i>Input power</i>
M_2	[Nm]	输出扭矩参照 P_1 / <i>Output torque referred to P_1</i>
P_{n_1}	[kW]	额定输入功率 / <i>Nominal input power</i>
M_{n_2}	[Nm]	额定输入功率参照 P_{n_1} / <i>Nominal output torque referred to P_{n_1}</i>
sf		服务系数 / <i>Service factor</i>
R_1	[N]	输入端可用径向负荷 / <i>Permitted input radial load</i>
A_1	[N]	输入端可用轴向负荷 / <i>Permitted input axial load</i>
$R_2 U$	[N]	U类型输出端可用径向负荷 / <i>Permitted output radial load for "U..." version</i>
$R_2 P$	[N]	P类型输出端可用径向负荷 / <i>Permitted output radial load for "P..." version</i>
R_2	[N]	输出端可用径向负荷 / <i>Permitted output radial load</i>
A_2	[N]	输出端可用轴向负荷 / <i>Permitted output axial load</i>

润滑油

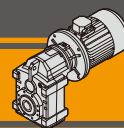
Lubrication

ITS系列减速电机全部采用矿物油，安装位置确定加油量。

ITS series gearmotors come complete with mineral oil. The lubricant quantity depends on assembly position.

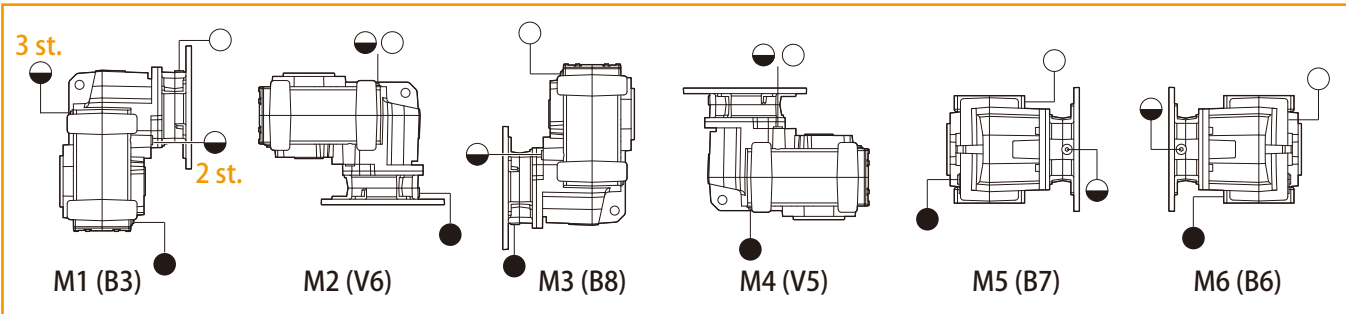


ITS	加油量 (升) / <i>Oil quantity (litres)</i>					
	M1 (B3)	M2 (V6)	M3 (B8)	M4 (V5)	M5 (B7)	M6 (B6)
922	3,4	5,2	4,2	6,1	3,7	3,6
923	4,9			5,9		
932	4,7	7,0	4,3	7,7	4,5	4,4
933	6,7			7,5		
942	9,1	14,4	9,1	15,4	9,1	8,9
943	12,0			15,1		



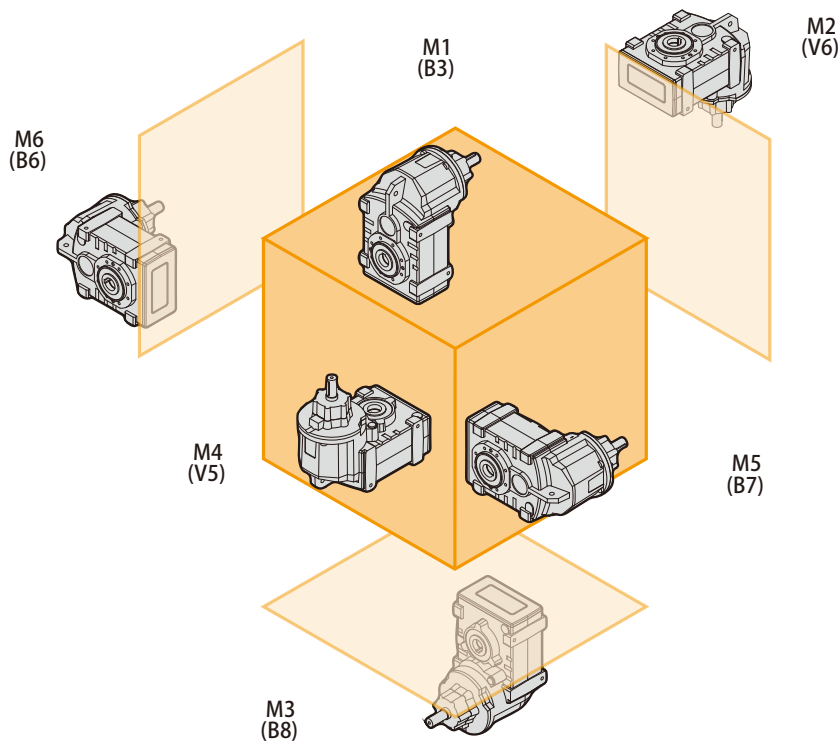
润滑油

Lubrication

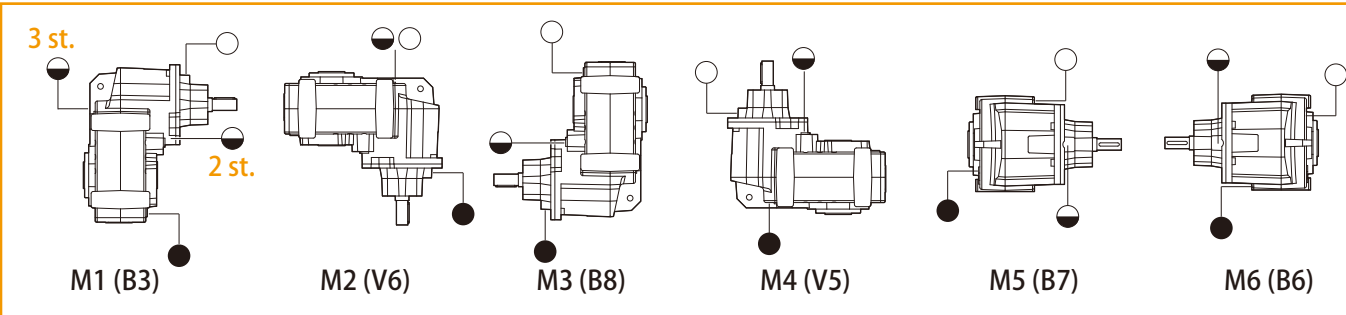


- 透气及加油油塞 / Breather and filling plug
- 油镜 / Oil level plug
- 放油塞 / Oil drain plug

ITSIS..

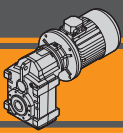


ITSIS	加油量 (升) / Oil quantity (litres)					
	M1 (B3)	M2 (V6)	M3 (B8)	M4 (V5)	M5 (B7)	M6 (B6)
922	3,6	5,6	4,4	6,1	3,9	3,8
923	5,1			5,9		
932	4,9	7,4	4,7	7,7	4,7	4,6
933	6,9			7,5		
942	9,3	15,1	9,8	15,4	9,5	9,3
943	12,2	14,8	9,5	15,1	9,3	9,1



- 透气及加油油塞 / Breather and filling plug
- 油镜 / Oil level plug
- 放油塞 / Oil drain plug





输入径向负荷

Input Radial loads

ITS 922 ITS 923 -932 ITS 933 - 943	n_1 [min ⁻¹]	电机功率 / Motor Power [kW]			
		2.2	3.0	4.0	5.5
R_1 [N]	1400	1800			750
	900	2100		1200	-
	500	2500	-	-	-

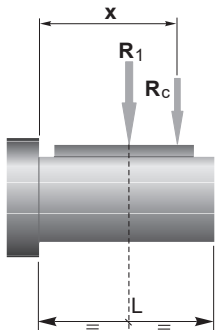
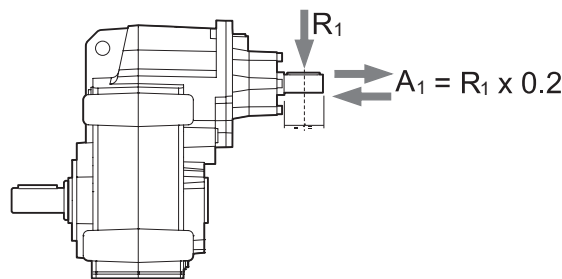
ITS 942	n_1 [min ⁻¹]	电机功率 / Motor Power [kW]					
		5.5	7.5	9.2	11.0	15.0	18.5
R_1 [N]	1400	3700				2800	1200
	900	4900			3300	650	-
	500	5250	3900	1300	-	-	-

下列技术参数表格显示了最大可用径向力。

当径向负载作用点不在输入轴的中间位置，必须用以下公式来计算有效负荷：

The radial loads maximum output applicable are indicated in the previous tables.

When the resulting radial load is not applied on the centre line of the shaft it is necessary to calculate the effective load with the following formula:

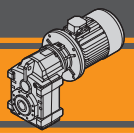


	ITS922	ITS923	ITS932	ITS933	ITS942	ITS943
a	139				157	139
b	110				118	110

$$R_c = \frac{R_1 \cdot a}{(b+x)} \leq R_1$$

$$R \leq R_c$$

*a, b = 图表中给出的值
a, b = values given in the table*



输出径向负荷

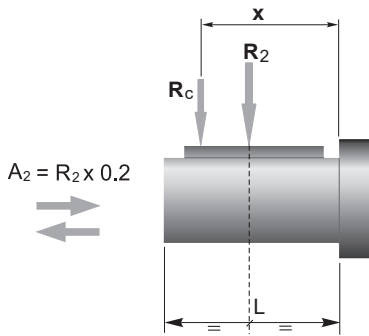
Output radial loads

下列技术参数表格显示了最大可用径向力。

The radial loads maximum output applicable are indicated in the technical data table.

当径向负载作用点不在输出轴的中间位置，必须用以下公式来计算有效负荷：

When the resulting radial load is not applied on the centre line of the shaft it is necessary to calculate the effective load with the following formula:



ITS	922 U... 923 U...	922 P... 923 P...	932 U... 933 U...	932 P... 933 P...	942 U... 943 U...	942 P... 943 P...
a	190	182	224	216	262	252
b	150	142	174	166	202	192
R_{2MAX}	9500	18000	12000	23000	15000	31000

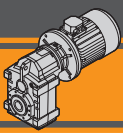
$$R_c = \frac{R_2 \cdot a}{(b + x)} \leq R_{2MAX}$$

$$R \leq R_c$$

a, b = 图表中给出的值
a, b = values given in the table

- U 型式 输出端轴承为球轴承
- P 型式 采用圆锥滚柱轴承
- U 型式时，可以根据需要配置圆锥滚柱轴承

U version has ball bearings on the output side.
P version uses taper roller bearings.
It's possible to have taper roller bearings for U version upon request.

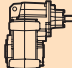


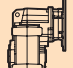
ITS 平行轴式减速电机 Helical parallel gearmotors

技术参数

n_1 1400 min⁻¹

Technical data

	n_2 [min ⁻¹]	Mn_2 [Nm]	Pn_1 [kW]	i	$R_2 U$ [N]	$R_2 P$ [N]
---	-------------------------------	----------------	----------------	-----	----------------	----------------

	IEC 电机适配法兰 IEC Motor adapters				
---	----------------------------------	--	--	--	--

ITSIS 922

248	500	13.50	5.66	2492	9368
198	500	10.82	7.06	2835	10580
167	500	9.13	8.37	3131	11619
153	650	10.87	9.13	3078	11708
134	650	9.51	10.43	3327	12602
116	650	8.24	12.04	3618	13638
104	750	8.48	13.50	3685	14122
90	750	7.39	15.50	3994	15236
79	900	7.72	17.81	4012	15753
64	900	6.32	21.73	4506	17576
61	900	6.00	22.92	4648	18095
59	900	5.78	23.80	4751	18500
53	900	5.16	26.63	5073	18500
48	900	4.70	29.26	5360	18500
44	1000	4.75	32.14	5361	18500
40	1000	4.43	35.19	5652	18500
36	1000	3.96	39.38	6035	18500
32	1000	3.60	43.27	6376	18500
30	1000	3.28	47.50	6733	18500
25	1100	3.07	55.96	6992	18500
23	1100	2.80	61.25	7371	18500
21	1100	2.54	67.50	7800	18500

ITS 922

80B5	90B5/B14	100B5/B14	112B5/B14	132B5/B14
				*
				*
				*
				*
				*
				*
				*
			*	*
			*	
			*	
			*	


ITSIS 923

19	1100	2.29	75.00	8295	18500
16	1100	1.99	86.28	9001	18500
15	1100	1.82	94.46	9500	18500
13	1100	1.58	108.48	9500	18500
12	1100	1.44	118.77	9500	18500
9.9	1100	1.22	140.93	9500	18500
9.1	1100	1.11	154.30	9500	18500
8.1	1100	1.00	172.40	9500	18500
7.4	1100	0.91	188.76	9500	18500
6.6	1100	0.81	211.15	9500	18500
5.9	1100	0.72	238.53	9500	18500
5.1	1100	0.63	272.74	9500	18500
4.8	1100	0.59	289.29	9500	18500
4.4	1100	0.54	316.73	9500	18500
4.1	1100	0.50	342.86	9500	18500
3.7	1100	0.46	375.38	9500	18500

ITS 923

71B5	80B5	90B5/B14	100B5/B14	112B5/B14
				*
			*	*
			*	*
			*	*
			*	*
			*	*
			*	*
			*	*
		*	*	*
		*	*	*
		*	*	*
		*	*	*
		*	*	*
	*	*	*	*
	*	*	*	*

备注:
阴影部分表明该型号有相适配的电机输入。

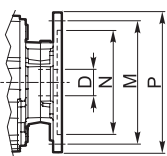
 * = 服务系数(sf)选择需根据应用情况: 请与我司技术部取得联系。

减速电机选型前请参考D11至D17的技术参数表格。

N.B.
Highlighted areas indicate motor inputs available on each size of unit.

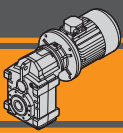
 * = The service factor (sf) has to be selected depending on application: please contact our Technical Department.

Before selecting any gearbox, please read the performance values shown in the tables on page D11 to D17.



IEC 尺寸参数 / IEC Dimensions

	71 B5	80 B5	90 B5	90 B14	100/112 B5	100/112 B14	132 B5	132 B14
N	110	130	130	95	180	110	230	130
M	130	165	165	115	215	130	265	165
P	160	200	200	140	250	160	300	200
D	14	19	24		28		38	

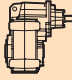
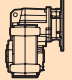


ITS 平行轴式减速电机 Helical parallel gearmotors

技术参数

n_1 1400 min⁻¹


Technical data


	n_2 [min ⁻¹]	Mn_2 [Nm]	Pn_1 [kW]	i	$R_2 U$ [N]	$R_2 P$ [N]	 IEC 电机适配法兰 IEC Motor adapters								
							90B5/B14	100B5/B14	112B5/B14	132B5/B14	160B5	180B5			
ITSIS 942							ITS 942								
	177	1500	28.90	7.93	4206	17268									
	146	1500	23.89	9.59	4701	19178									
	131	1700	24.34	10.67	4816	19916									
	118	1700	21.96	11.82	5113	21074									
	109	2000	23.66	12.91	5070	21422									
	99	2000	21.49	14.21	5364	22590									
	88	2400	23.04	15.91	5258	22990									
	81	2400	21.15	17.33	5527	24097									
	73	2500	19.96	19.13	5725	25158									
	60	2500	16.37	23.32	6426	28055									*
	48	2700	14.01	29.42	7022	31000									*
	45	3000	14.61	31.35	6763	31000									*
	35	3000	11.57	39.60	7751	31000									*
	32	2700	9.53	43.25	8792	31000									
	29	2700	8.60	47.95	9337	31000									
	26	3200	9.34	53.43	8754	31000									
	24	3200	8.57	58.22	9203	31000									
	22	3200	7.73	64.53	9773	31000									
	20	3000	6.65	70.40	10842	31000									
	18	3000	6.08	77.00	11424	31000									

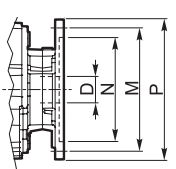
ITSIS 943							ITS 943				
	15	3200	5.31	94.05	12175	31000	80B5	90B5/B14	100B5/B14	112B5/B14	132B5/B14
	14	3200	4.99	99.94	12614	31000					*
	13	3200	4.56	109.42	13299	31000					*
	12	3200	4.12	121.00	14102	31000					*
	10	3200	3.71	134.54	15000	31000				*	*
	9.5	3200	3.38	147.69	15000	31000				*	*
	8.2	3200	2.94	169.71	15000	31000				*	*
	7.5	3200	2.69	185.82	15000	31000				*	*
	6.7	3200	2.40	207.90	15000	31000				*	*
	6.1	3200	2.18	228.46	15000	31000				*	*
	5.6	3200	1.99	250.80	15000	31000			*	*	*
	4.7	3200	1.69	295.48	15000	31000			*	*	
	4.3	3200	1.54	323.40	15000	31000			*	*	
	3.9	3200	1.40	356.40	15000	31000			*	*	

备注：
阴影部分表明该型号有相适配的电机输入。

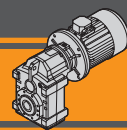
N.B.
Highlighted areas indicate motor inputs available on each size of unit.

 * = 服务系数(sf)选择需根据应用情况：请与我司技术部取得联系。
减速电机选型前请参考D11至D17的技术参数表格。

 * = The service factor (sf) has to be selected depending on application: please contact our Technical Department.
Before selecting any gearbox, please read the performance values shown in the tables on page D11 to D17.

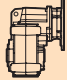





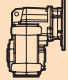


IEC 尺寸参数 / IEC Dimensions									
	80 B5	90 B5	90 B14	100/112 B5	100/112 B14	132 B5	132 B14	160 B5	180 B5
N	130	130	95	180	110	230	130	250	250
M	165	165	115	215	130	265	165	300	300
P	200	200	140	250	160	300	200	350	350
D	19	24		28		38		42	48

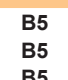
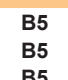


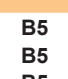
技术参数

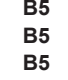
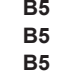
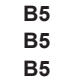
Technical data

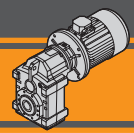
P ₁ [kW]	n ₂ [min ⁻¹]	M ₂ [Nm]	sf	i			R ₂ U [N]	R ₂ P [N]	
0 25									
71A4 (1400 min ⁻¹)	5.9	382	2.9	238.53	ITS923		9500	18500	
	5.1	437	2.5	272.74			B5	9500	18500
	4.8	464	2.4	289.29			B5	9500	18500
	4.4	508	2.2	316.73			B5	9500	18500
	4.1	550	2.0	342.86			B5	9500	18500
	3.7	602	1.8	375.38	B5	9500	18500		
	5.4	413	4.1	257.61	ITS933		12000	23000	
	4.8	472	3.6	294.56			B5	12000	23000
	4.5	501	3.4	312.43			B5	12000	23000
	4.1	548	3.1	342.07			B5	12000	23000
3.8	594	2.9	370.29	B5			12000	23000	
3.5	650	2.6	405.42	B5	12000	23000			

P ₁ [kW]	n ₂ [min ⁻¹]	M ₂ [Nm]	sf	i			R ₂ U [N]	R ₂ P [N]	
0 55									
80A4 (1400 min ⁻¹)	19	265	4.2	75.00	ITS923		9500	18500	
	16	304	3.6	86.28			B5	9500	18500
	15	333	3.3	94.46			B5	9500	18500
	13	383	2.9	108.48			B5	9500	18500
	12	419	2.6	118.77			B5	9500	18500
	9.9	497	2.2	140.93	B5	9500	18500		
	9.1	544	2.0	154.30	B5	9500	18500		
	8.1	608	1.8	172.40	B5	9500	18500		
	7.4	666	1.7	188.76	B5	9500	18500		
	6.6	745	1.5	211.15	B5	9500	18500		
5.9	841	1.3	238.53	B5	9500	18500			
5.1	962	1.1	272.74	B5	9500	18500			
4.8	1020	1.1	289.29	B5	9500	18500			
4.4	1117	1.0	316.73	B5	9500	18500			

0.37									
71B4 (1400 min ⁻¹)	5.9	566	1.9	238.53	ITS923		9500	18500	
	5.1	647	1.7	272.74			B5	9500	18500
	4.8	686	1.6	289.29			B5	9500	18500
	4.4	751	1.5	316.73			B5	9500	18500
	4.1	813	1.4	342.86			B5	9500	18500
	3.7	891	1.2	375.38	B5	9500	18500		
	5.4	611	2.8	257.61	ITS933		12000	23000	
	4.8	699	2.4	294.56			B5	12000	23000
	4.5	741	2.3	312.43			B5	12000	23000
	4.1	812	2.1	342.07			B5	12000	23000
3.8	879	1.9	370.29	B5			12000	23000	
3.5	962	1.8	405.42	B5	12000	23000			

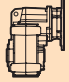

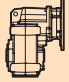

0.55									
80A4 (1400 min ⁻¹)	247	20	25	5.66	ITS922		3016	10554	
	198	25	20	7.06			B5	3424	11905
	167	30	17	8.37			B5	3775	13059
	153	33	20	9.13			B5	3969	13693
	134	38	17	10.43			B5	4283	14723
	116	43	15	12.04			B5	4647	15910
	104	49	15	13.50			B5	4958	16920
	90	56	13	15.50			B5	5359	18223
	79	64	14	17.81			B5	5795	18500
	64	78	11	21.73			B5	6474	18500
	61	83	11	22.92			B5	6667	18500
	59	86	11	23.80			B5	6807	18500
	53	96	9.4	26.63			B5	7240	18500
	48	105	8.5	29.26			B5	7623	18500
	44	116	8.6	32.14			B5	8021	18500
	40	124	8.1	35.19			B5	8430	18500
	36	139	7.2	39.38			B5	8951	18500
	32	153	6.6	43.27			B5	9408	18500
	29	168	6.0	47.50			B5	9500	18500
	25	197	5.6	55.96			B5	9500	18500
23	216	5.1	61.25	B5	9500	18500			
21	238	4.6	67.50	B5	9500	18500			

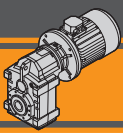
30	165	10.0	46.73	ITS932		B5	10992	23000
27	181	9.1	51.30			B5	11559	23000
23	213	7.7	60.44			B5	12000	23000
21	233	7.1	66.15			B5	12000	23000
19	257	5.8	72.90			B5	12000	23000
17	286	6.0	81.00	ITS933		B5	12000	23000
15	329	5.2	93.18			B5	12000	23000
14	360	4.7	102.02			B5	12000	23000
12	413	4.1	117.16			B5	12000	23000
11	452	3.8	128.28			B5	12000	23000
9.2	537	3.2	152.21			B5	12000	23000
8.4	588	2.9	166.65			B5	12000	23000
7.5	657	2.6	186.19			B5	12000	23000
6.9	719	2.4	203.86			B5	12000	23000
6.1	804	2.1	228.05			B5	12000	23000
5.4	908	1.9	257.61			B5	12000	23000
4.8	1039	1.6	294.56			B5	12000	23000
4.5	1102	1.5	312.43			B5	12000	23000
4.1	1206	1.4	342.07			B5	12000	23000
3.8	1306	1.3	370.29			B5	12000	23000
3.5	1430	1.2	405.42	B5	12000	23000		
15	332	9.6	94.05	ITS943		B5	15000	31000
14	352	9.1	99.94			B5	15000	31000
13	386	8.3	109.42			B5	15000	31000
12	427	7.5	121.00			B5	15000	31000
10	474	6.7	134.54			B5	15000	31000
9.5	521	6.1	147.69			B5	15000	31000
8.2	599	5.3	169.71			B5	15000	31000
7.5	655	4.9	185.82			B5	15000	31000
6.7	733	4.4	207.90			B5	15000	31000
6.1	806	4.0	228.46			B5	15000	31000
5.6	884	3.6	250.80	B5	15000	31000		
4.7	1042	3.1	295.48	B5	15000	31000		
4.3	1141	2.8	323.40	B5	15000	31000		
3.9	1257	2.5	356.40	B5	15000	31000		



技术参数

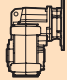

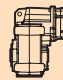

Technical data

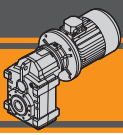
P_1 [kW]	n_2 [min ⁻¹]	M_2 [Nm]	sf	i			$R_2 U$ [N]	$R_2 P$ [N]	P_1 [kW]	n_2 [min ⁻¹]	M_2 [Nm]	sf	i			$R_2 U$ [N]	$R_2 P$ [N]
2.2									3.0								
100LA4 (1400 min ⁻¹)	98	205	9.8	14.21	ITS942	B5/B14	7340	26991	100LB4 (1400 min ⁻¹)	228	121	7.1	6.13	ITS932	B5/B14	3401	13251
	88	229	10	15.91		B5/B14	7809	28652		183	150	5.7	7.65		B5/B14	3840	14890
	81	250	9.6	17.33		B5/B14	8183	29976		155	177	4.8	9.03		B5/B14	4201	16240
	73	276	9.1	19.13		B5/B14	8636	31000		141	194	4.6	9.90		B5/B14	4412	17029
	60	336	7.4	23.32		B5/B14	9604	31000		124	221	4.1	11.27		B5/B14	4725	18204
	48	424	6.4	29.42		B5/B14	10851	31000		107	257	3.5	13.06		B5/B14	5103	19626
	45	452	6.6	31.35		B5/B14	11212	31000		96	286	3.1	14.58		B5/B14	5398	20743
	35	571	5.3	39.60		B5/B14	12611	31000		83	330	3.0	16.81		B5/B14	5796	22260
	32	623	4.3	43.25		B5/B14	13167	31000		73	378	2.6	19.24		B5/B14	6191	23000
	29	691	3.9	47.95		B5/B14	13831	31000		59	463	2.6	23.57		B5/B14	6809	23000
	26	754	4.2	53.43		B5/B14	14582	31000		57	486	2.5	24.75		B5/B14	6960	23000
	24	821	3.9	58.22		B5/B14	15000	31000		54	507	2.8	25.81		B5/B14	7091	23000
	22	910	3.5	64.53		B5/B14	15000	31000		48	567	2.5	28.88		B5/B14	7442	23000
	20	993	3.0	70.40		B5/B14	15000	31000		40	682	2.4	34.71		B5/B14	8014	23000
	18	1086	2.8	77.00		B5/B14	15000	31000		37	747	2.2	38.01		B5/B14	8287	23000
	15	1327	2.4	94.05	ITS943	B5/B14	15000	31000		33	818	2.0	42.53	B5/B14	8657	23000	
	14	1410	2.3	99.94		B5/B14	15000	31000		30	899	1.8	46.73	B5/B14	8918	23000	
	13	1544	2.1	109.42		B5/B14	15000	31000		27	987	1.7	51.30	B5/B14	9154	23000	
	12	1707	1.9	121.00		B5/B14	15000	31000		23	1163	1.4	60.44	B5/B14	9496	23000	
	10	1898	1.7	134.54		B5/B14	15000	31000		21	1272	1.3	66.15	B5/B14	9629	23000	
	9.5	2083	1.5	147.69		B5/B14	15000	31000		19	1402	1.1	72.90	B5/B14	9715	23000	
	8.2	2394	1.3	169.71		B5/B14	15000	31000		17	1558	1.1	81.00	ITS933	B5/B14	9724	23000
	7.5	2621	1.2	185.82		B5/B14	15000	31000		15	1792	0.9	93.18		B5/B14	9562	23000
	6.7	2933	1.1	207.90		B5/B14	15000	31000		98	279	7.2	14.21	ITS942	B5/B14	7258	26808
	6.1	3223	1.0	228.46		B5/B14	15000	31000		88	313	7.7	15.91		B5/B14	7711	28435
	247	111	4.5	5.66	ITS922	B5/B14	2916	10329		81	340	7.1	17.33		B5/B14	8071	29728
	198	139	3.6	7.06		B5/B14	3284	11589		73	376	6.7	19.13		B5/B14	8504	31000
	167	164	3.0	8.37		B5/B14	3591	12648		60	458	5.5	23.32		B5/B14	9425	31000
	153	179	3.6	9.13		B5/B14	3757	13222		48	578	4.7	29.42		B5/B14	10592	31000
	134	205	3.2	10.43		B5/B14	4022	14143		45	616	4.9	31.35		B5/B14	10925	31000
	116	237	2.7	12.04		B5/B14	4319	15186		35	778	3.9	39.60		B5/B14	12196	31000
	104	265	2.8	13.50		B5/B14	4565	16056		32	850	3.2	43.25		B5/B14	12689	31000
	90	304	2.5	15.50		B5/B14	4870	17153		29	942	2.9	47.95		B5/B14	13269	31000
	79	350	2.6	17.81		B5/B14	5185	18309		26	1028	3.1	53.43	B5/B14	13929	31000	
	64	427	2.1	21.73		B5/B14	5639	18500		24	1120	2.9	58.22	B5/B14	14413	31000	
	61	450	2.0	22.92		B5/B14	5759	18500		22	1241	2.6	64.53	B5/B14	14983	31000	
	59	468	1.9	23.80		B5/B14	5843	18500		20	1354	2.2	70.40	B5/B14	15000	31000	
	53	523	1.7	26.63		B5/B14	6089	18500		18	1481	2.0	77.00	B5/B14	15000	31000	
	48	575	1.6	29.26		B5/B14	6286	18500		15	1809	1.8	94.05	ITS943	B5/B14	15000	31000
	44	631	1.6	32.14		B5/B14	6470	18500		14	1923	1.7	99.94		B5/B14	15000	31000
	40	677	1.5	35.19		B5/B14	6677	18500		13	2105	1.5	109.42		B5/B14	15000	31000
	36	757	1.3	39.38		B5/B14	6856	18500		12	2328	1.4	121.00		B5/B14	15000	31000
	32	832	1.2	43.27		B5/B14	6976	18500		10	2588	1.2	134.54		B5/B14	15000	31000
	29	914	1.1	47.50		B5/B14	7059	18500		9.5	2841	1.1	147.69		B5/B14	15000	31000
	25	1077	1.0	55.96		B5/B14	7090	18500		8.2	3265	1.0	169.71		B5/B14	15000	31000



技术参数

Technical data

P ₁ [kW]	n ₂ [min ⁻¹]	M ₂ [Nm]	sf	i			R ₂ U [N]	R ₂ P [N]	P ₁ [kW]	n ₂ [min ⁻¹]	M ₂ [Nm]	sf	i			R ₂ U [N]	R ₂ P [N]					
4.0																						
112M4 (1400 min ⁻¹)	247	148	3.4	5.66	ITS922	B5/B14	2876	10238	132S4 (1400 min ⁻¹)	247	204	2.5	5.66	ITS922	B5/B14	2815	10100					
	198	185	2.7	7.06			B5/B14	3226		11460	198	254	2.0			7.06	B5/B14	3140	11266			
	167	219	2.3	8.37			B5/B14	3516		12480	167	301	1.7			8.37	B5/B14	3403	12228			
	153	239	2.7	9.13			B5/B14	3671		13030	153	329	2.0			9.13	B5/B14	3541	12741			
	134	273	2.4	10.43			B5/B14	3915		13906	134	376	1.7			10.43	B5/B14	3755	13552			
	116	316	2.1	12.04			B5/B14	4186		14891	116	434	1.5			12.04	B5/B14	3985	14448			
	104	354	2.1	13.50			B5/B14	4404		15704	104	486	1.5			13.50	B5/B14	4164	15174			
	90	406	1.8	15.50			B5/B14	4671		16717	90	558	1.3			15.50	B5/B14	4371	16061			
	79	467	1.9	17.81			B5/B14	4937		17767	79	642	1.4			17.81	B5/B14	4564	16953			
	64	569	1.6	21.73			B5/B14	5298		18500	64	783	1.1			21.73	B5/B14	4787	18183			
	61	600	1.5	22.92			B5/B14	5388		18500	61	825	1.1			22.92	B5/B14	4832	18494			
	59	623	1.4	23.80			B5/B14	5450		18500	59	857	1.1			23.80	B5/B14	4859	18500			
	53	697	1.3	26.63			B5/B14	5619		18500	ITS932	B5/B14	228			221	3.8	6.13	ITS932	B5/B14	3314	13027
	48	766	1.2	29.26			B5/B14	5740		18500			183			276	3.1	7.65			B5/B14	3717
44	842	1.2	32.14	B5/B14	5836	18500	155	325	2.6	9.03			B5/B14	4041	15833							
40	903	1.1	35.19	B5/B14	5961	18500	141	357	2.5	9.90			B5/B14	4226	16559							
36	1010	1.0	39.38	B5/B14	6001	18500	124	406	2.2	11.27			B5/B14	4498	17630							
32	1110	0.9	43.27	B5/B14	5983	18500	107	470	1.9	13.06			B5/B14	4815	18904							
228	161	5.3	6.13	ITS932	B5/B14	3366	13162	96	525	1.7			14.58	ITS942	B5/B14	5157	19427					
	183	200	4.2			7.65	B5/B14	3790	14764	146			345			4.3	9.59	B5/B14			5711	21458
	155	237	3.6			9.03	B5/B14	4137	16077	131			384			4.4	10.67	B5/B14			6041	22671
	141	259	3.5			9.90	B5/B14	4338	16841	118			426			4.0	11.82	B5/B14			6372	23896
	124	295	3.0			11.27	B5/B14	4634	17974	108			465			4.3	12.91	B5/B14			6667	24990
	107	342	2.6			13.06	B5/B14	4988	19337	98			512			3.9	14.21	B5/B14			7002	26238
	96	382	2.4			14.58	B5/B14	5261	20400	88	573	4.2	15.91			B5/B14	7405	27755				
	83	440	2.3			16.81	B5/B14	5625	21833	81	624	3.8	17.33			B5/B14	7720	28952				
	73	504	2.0			19.24	B5/B14	5979	23000	73	689	3.6	19.13			B5/B14	8095	30386				
	59	617	1.9			23.57	B5/B14	6516	23000	60	840	3.0	23.32			B5/B14	8864	31000				
	57	648	1.9			24.75	B5/B14	6644	23000	48	1060	2.5	29.42			B5/B14	9782	31000				
	54	676	2.1			25.81	B5/B14	6753	23000	45	1129	2.7	31.35			B5/B14	10029	31000				
48	756	1.9	28.88	B5/B14	7039	23000	35	1426	2.1	39.60	B5/B14	10899	31000									
40	909	1.8	34.71	B5/B14	7474	23000	32	1558	1.7	43.25	B5/B14	11198	31000									
37	996	1.7	38.01	B5/B14	7663	23000	29	1727	1.6	47.95	B5/B14	11513	31000									
33	1091	1.5	42.53	B5/B14	7928	23000	26	1884	1.7	53.43	B5/B14	11889	31000									
30	1199	1.4	46.73	B5/B14	8071	23000	24	2053	1.6	58.22	B5/B14	12076	31000									
27	1316	1.3	51.30	B5/B14	8173	23000	22	2276	1.4	64.53	B5/B14	12231	31000									
23	1550	1.1	60.44	B5/B14	8224	23000	20	2483	1.2	70.40	B5/B14	12289	31000									
21	1697	1.0	66.15	B5/B14	8162	23000	18	2716	1.1	77.00	B5/B14	12262	31000									
98	372	5.4	14.21	ITS942	B5/B14	7155	26580	ITS943	B5/B14	14785	31000											
	88	417	5.8			15.91	B5/B14			7589	28163	15	2412	1.3	94.05	B5/B14	11787	31000				
	81	454	5.3			17.33	B5/B14			7931	29417	14	2563	1.2	99.94	B5/B14	14800	31000				
	73	501	5.0			19.13	B5/B14			8340	30929	13	2807	1.1	109.42	B5/B14	14723	31000				
	60	611	4.1			23.32	B5/B14			9201	31000	12	3103	1.0	121.00	B5/B14	14473	31000				
	48	771	3.5			29.42	B5/B14			10268	31000	7.5	132MA4 (1400 min ⁻¹)	247	278	1.8	5.66	ITS922	B5/B14	2734	9917	
	45	821	3.7			31.35	B5/B14			10567	31000			198	347	1.4	7.06			B5/B14	3025	11008
	35	1037	2.9			39.60	B5/B14			11677	31000			167	411	1.2	8.37			B5/B14	3253	11892
	32	1133	2.4			43.25	B5/B14			12093	31000			153	448	1.4	9.13			B5/B14	3369	12357
	29	1256	2.1			47.95	B5/B14			12567	31000			134	512	1.3	10.43			B5/B14	3542	13078
	26	1370	2.3			53.43	B5/B14			13113	31000			116	592	1.1	12.04			B5/B14	3717	13857
24	1493	2.1	58.22	B5/B14	13478	31000	104	663	1.1	13.50	B5/B14			3843	14469							
22	1655	1.9	64.53	B5/B14	13882	31000	90	761	1.0	15.50	B5/B14			3972	15188							
20	1806	1.7	70.40	B5/B14	14184	31000	79	875	1.0	17.81	B5/B14	4066	15869									
18	1975	1.5	77.00	B5/B14	14446	31000																

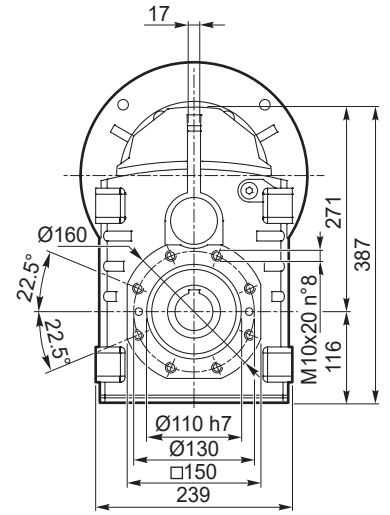
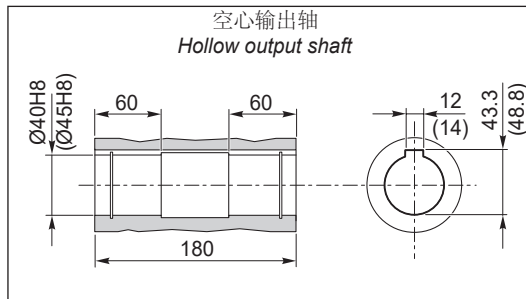
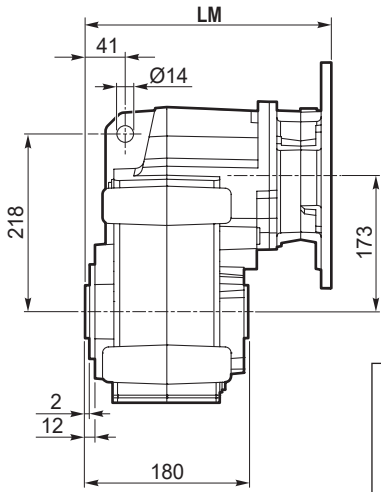


尺寸参数

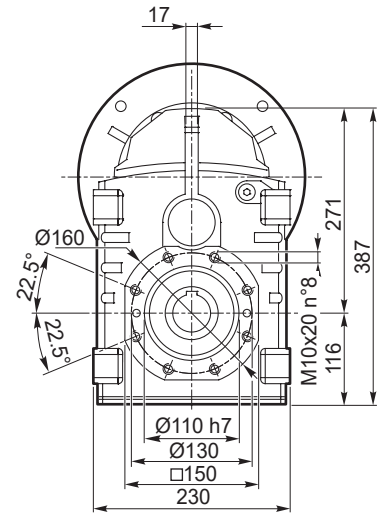
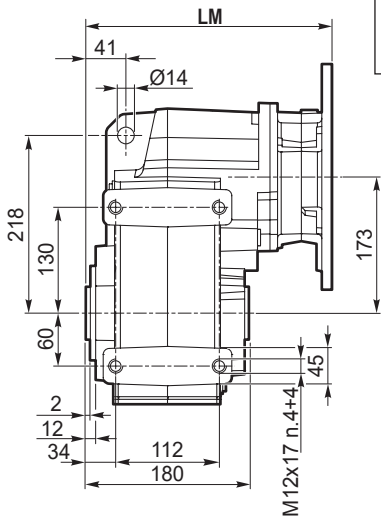
Dimensions

ITS 922 - ITS 923

ITS 922 U
ITS 923 U

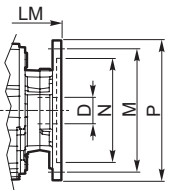


ITS 922 P
ITS 923 P

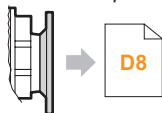


IEC 尺寸参数 / IEC Dimensions

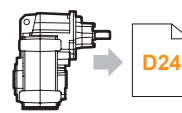
	71 B5	80 B5	90 B5	90 B14	100/112 B5	100/112 B14	132 B5	132 B14
LM	282.5	282.5	282.5	287	286.5	287	307.5	
N	110	130	130	95	180	110	230	130
M	130	165	165	115	215	130	265	165
P	160	200	200	140	250	160	300	200
D	14	19	24		28		38	

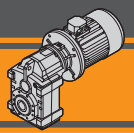


IEC 电机适配法兰
IEC Motor adapters



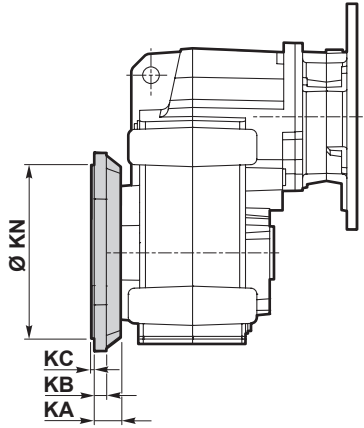
ITSIS..



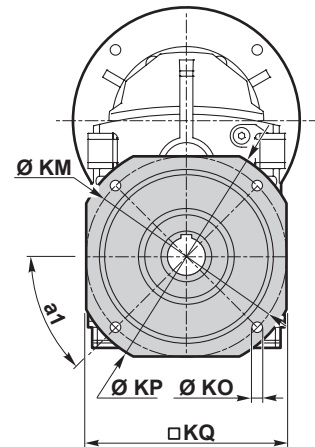
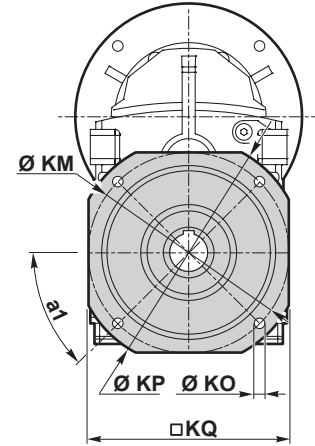
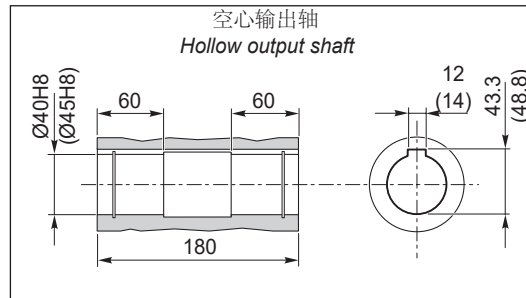
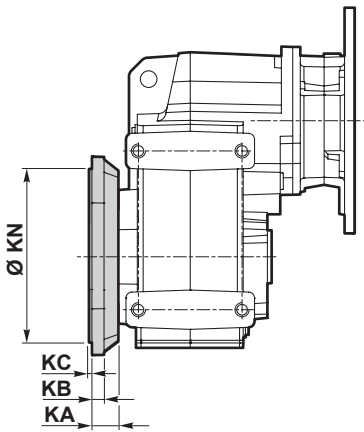


ITS 922 - ITS 923

ITS 922 U/F...
ITS 923 U/F...



ITS 922 P/F...
ITS 923 P/F...

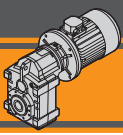


ITS

输出法兰 F / F Version											
ITS	KA	a ₁	KB	KC	Ø KM	KN f7	KO	KP □	KQ	法兰 / Flange	重量 / Weight [kg]
										类型 / Type	
922 923	35	45°	13	4	165	130	11	200	172	F200	2.6
	35	45°	13	4	215	180	14	250	215	F250	3.8
	35	45°	13	4	265	230	14	300	265	F300	5.6

重量 / Weight [kg]									
ITS	71 B5	80 B5	90 B5	90 B14	100/112 B5	100/112 B14	132 B5	132 B14	
922 U	-	42	42	41	44	42	47	44	
922 P	-	42	42	41	44	41	47	44	
923 U	44	45	45	44	47	44			-
923 P	44	44	44	43	46	44			-

注：此数值是按M1(B3)安装位置加油后的重量
Note: weight of the gearbox filled with oil for M1 (B3) assembly position



ITS

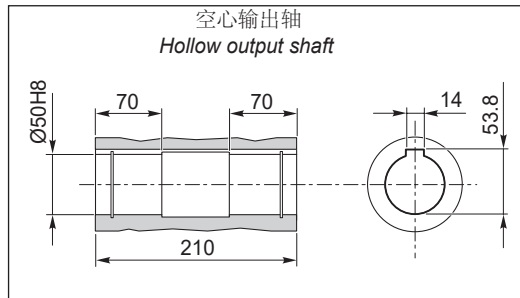
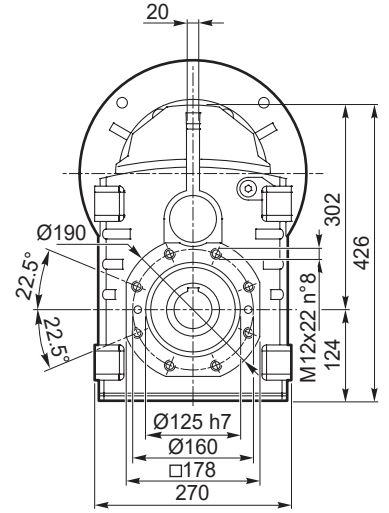
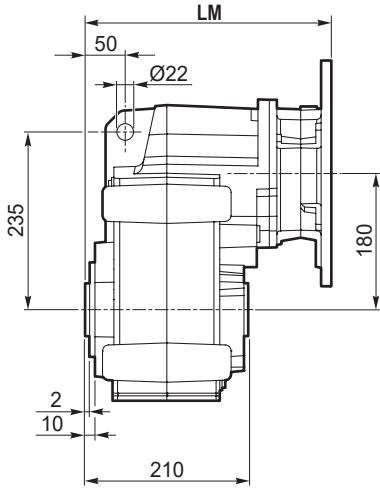
平行轴式减速电机
Helical parallel gearmotors

尺寸参数

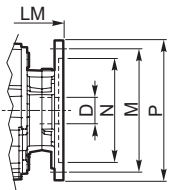
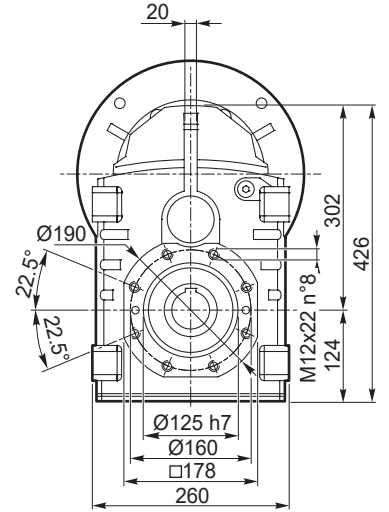
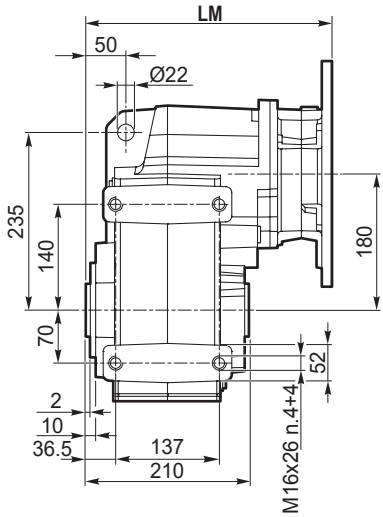
Dimensions

ITS 932 - ITS 933

ITS 932 U
ITS 933 U

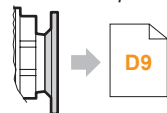


ITS 932 P
ITS 933 P

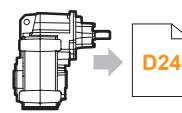


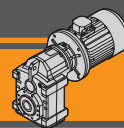
IEC 尺寸参数 IEC Dimensions									
	71 B5	80 B5	90 B5	90 B14	100/112 B5	100/112 B14	132 B5	132 B14	160 B5
LM	297.5	297.5	297.5	302	301.5	302	322.5		372.5
N	110	130	130	95	180	110	230	130	250
M	130	165	165	115	215	130	265	165	300
P	160	200	200	140	250	160	300	200	350
D	14	19	24		28		38		42

IEC 电机适配法兰
IEC Motor adapters



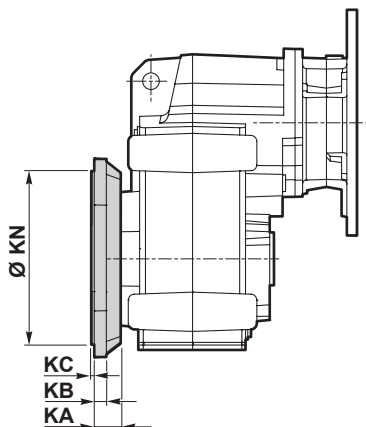
ITSIS..



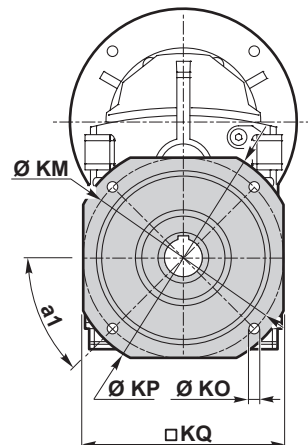
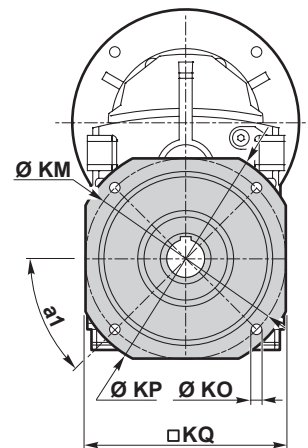
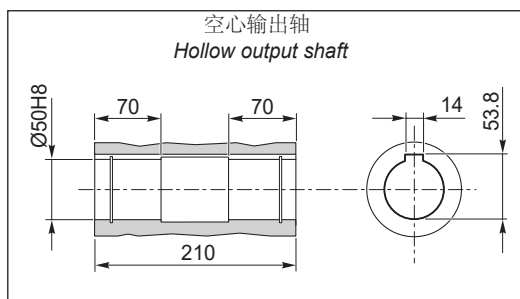
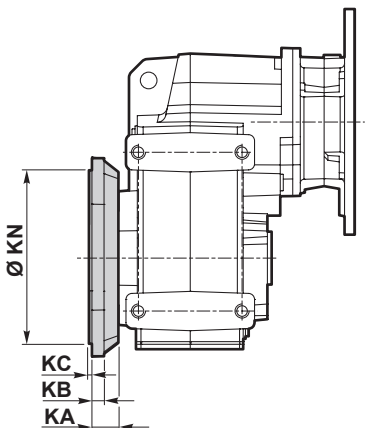


ITS 932 - ITS 933

ITS 932 U/F...
ITS 933 U/F...



ITS 932 P/F...
ITS 933 P/F...

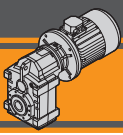


ITS

输出法兰 F / F Version											
ITS	KA	a ₁	KB	KC	Ø KM	KN f7	KO	KP □	KQ	法兰 / Flange	重量 / Weight [kg]
										类型 / Type	
932 933	40	45°	16	4	215	180	14	250	215	F250	4.8
	40	45°	16	4	265	230	14	300	265	F300	7.1
	40	45°	16	4	300	250	18	350	300	F350	9.1

重量 / Weight [kg]										
ITS	71 B5	80 B5	90 B5	90 B14	100/112 B5	100/112 B14	132 B5	132 B14	160 B5	
932 U	-	55	55	54	57	54	60	57	68	
932 P	-	54	54	53	56	54	59	56	68	
933 U	58	59	59	58	61	58	-	-	-	
933 P	58	58	58	57	60	58	-	-	-	

注：此数值是按M1(B3)安装位置加油后的重量
Note: weight of the gearbox filled with oil for M1 (B3) assembly position



ITS

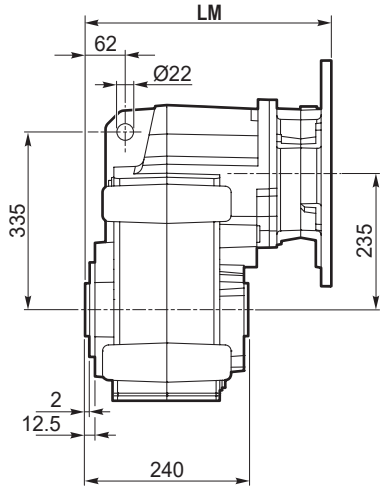
平行轴式减速电机
Helical parallel gearmotors

尺寸参数

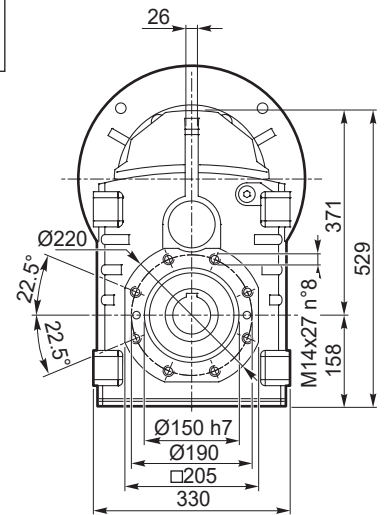
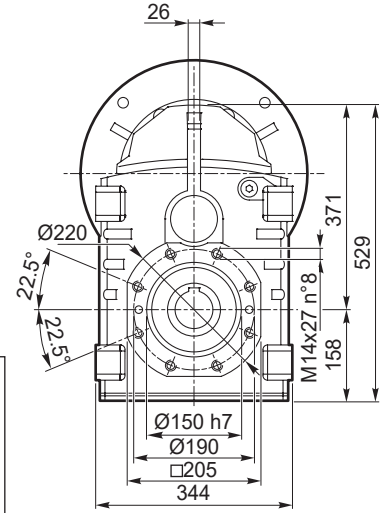
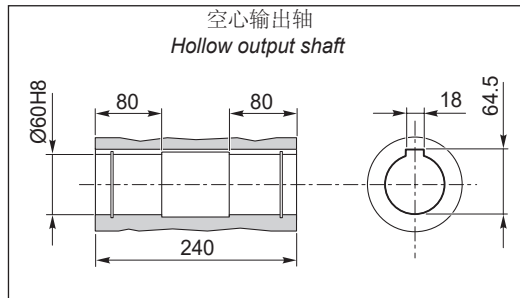
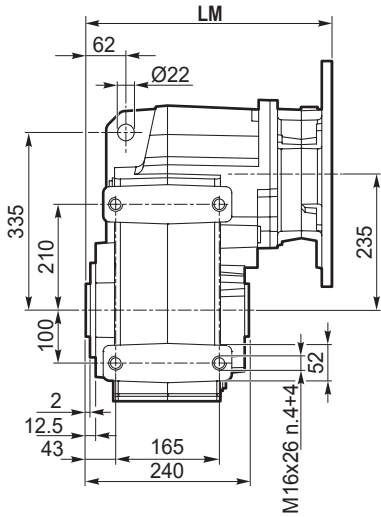
Dimensions

ITS 942 - ITS 943

ITS 942 U
ITS 943 U

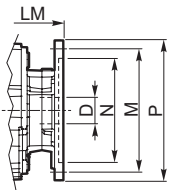


ITS 942 P
ITS 943 P

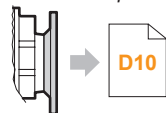


IEC 尺寸参数 | IEC Dimensions

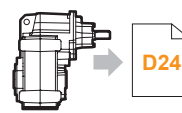
	80 B5	90 B5	90 B14	100/112 B5	100/112 B14	132 B5	132 B14	160 B5	180 B5
LM	325.5	325.5	330	329.5	330	350.5		400.5	400.5
N	130	130	95	180	110	230	130	250	250
M	165	165	115	215	130	265	165	300	300
P	200	200	140	250	160	300	200	350	350
D	19	24		28		38		42	48

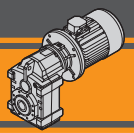


IEC 电机适配法兰
IEC Motor adapters



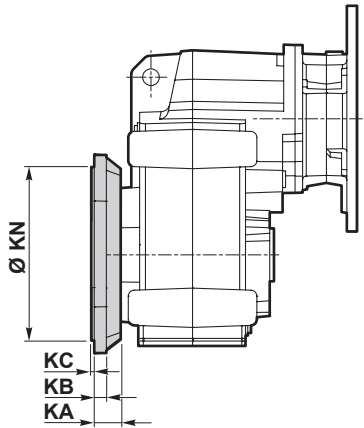
ITSIS..



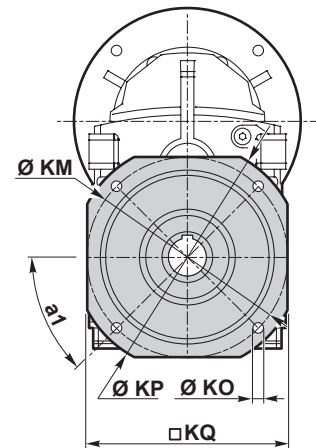
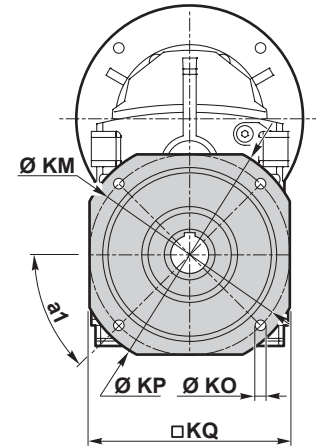
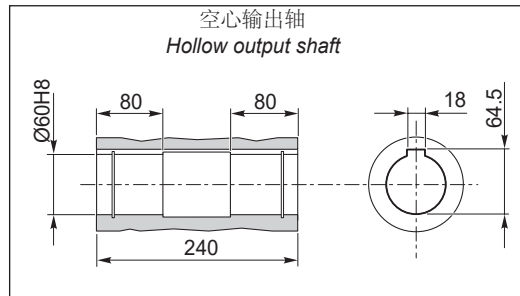
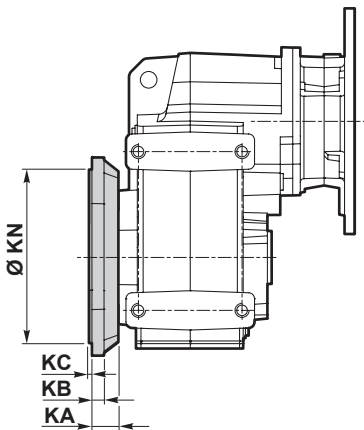


ITS 942 - ITS 943

ITS 942 U/F...
ITS 943 U/F...



ITS 942 P/F...
ITS 943 P/F...

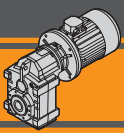


ITS

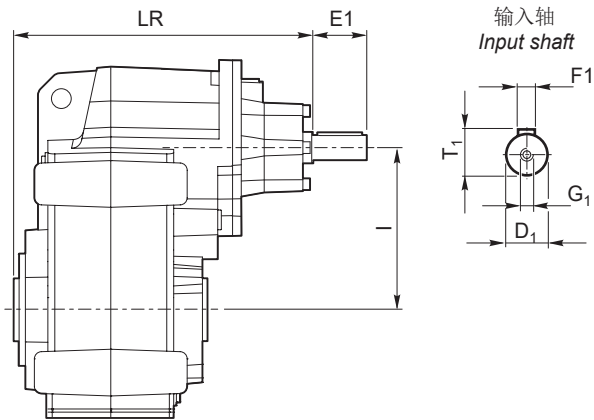
输出法兰 F / F Version											
ITS	KA	a ₁	KB	KC	Ø KM	KN f7	KO	KP □	KQ	法兰 / Flange	重量 / Weight
										类型 / Type	[kg]
942 943	42.5	45°	18	4	265	230	14	300	265	F300	7.4
	42.5	45°	18	5	300	250	18	350	300	F350	10.2
	42.5	45°	18	5	400	350	18	450	400	F450	16.9

重量 / Weight [kg]										
ITS	80 B5	90 B5	90 B14	100/112 B5	100/112 B14	132 B5	132 B14	160 B5	180 B5	
942 U	-	93	92	95	92	98	95	109	109	
942 P	-	92	91	94	91	97	94	108	108	
943 U	99	99	98	101	98	104	101	-	-	
943 P	98	98	97	100	97	103	100	-	-	

注：此数值是按M1(B3)安装位置加油后的重量
Note: weight of the gearbox filled with oil for M1 (B3) assembly position

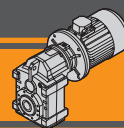


ITSIS...



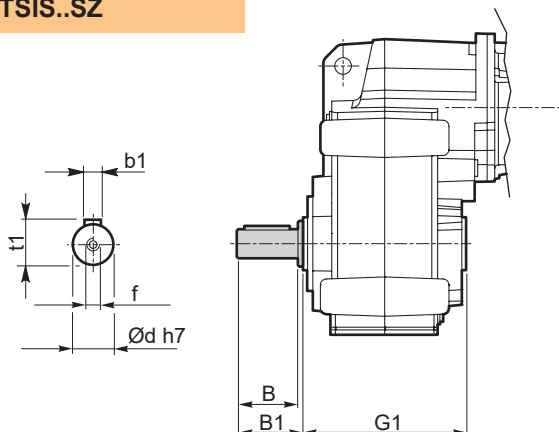
ITSIS	减速机型式 Version	LR	D1	E1	I	T1	F1	G1
922	U P U/F... P/F...	315	28	60	173	31	8	M10
923		315	28	60	173	31	8	M10
932		330	28	60	180	31	8	M10
933		330	28	60	180	31	8	M10
942		375.5	38	80	235	41	10	M12
943		358	28	60	235	31	8	M10

ITSIS	重量 / Weight [kg]
922 U	43
922 P	43
923 U	46
923 P	45
932 U	56
932 P	55
933 U	60
933 P	59
942 U	99
942 P	98
943 U	100
943 P	99



输出轴 / Output shaft

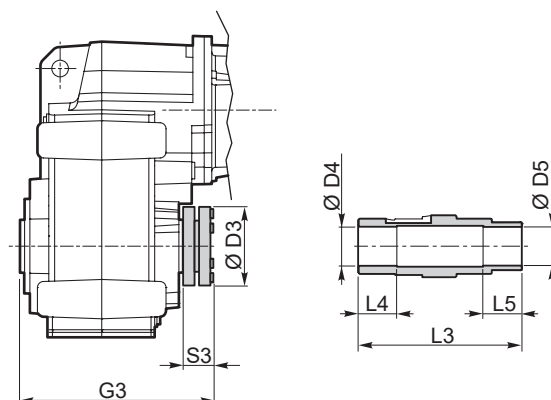
ITS...SZ
ITSIS..SZ



ITS	d h7	B	B1	G1	f	b1	t1	重量 / Weight [kg]
922 923	40	80	84	180	M16	12	43	2.2
932 933	50	100	105	210	M16	14	53.5	4.3
942 943	60	120	125	240	M20	18	64	7.1

配锁紧盘的输出轴 / Output shaft with shrink disk

ITS...G...
ITSIS..G..

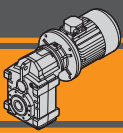


配锁紧盘的输出轴 / Output shaft with shrink disk

ITS	D3	D4 H8	D5 H8	G3	L3	L4	L5	S3	G4	
922/3	G40	100	41	40	217.5	215	45	45	34.5	90
	G45	100	46	45	217.5	215	45	45	34.5	90
932/3	G50	110	51	50	247.5	245	50	50	34.5	105
942/3	G60	138	61	60	280.5	279	60	60	37.5	120

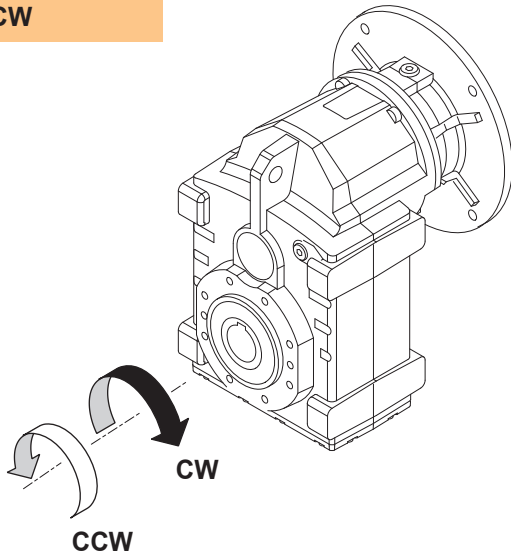
配锁紧盘的输出轴组件可供选择：
装配指导请联系我司技术部门。

Output shaft kit with shrink disk available on request:
for assembly instructions please contact our Technical Service



逆止装置 / Backstop device

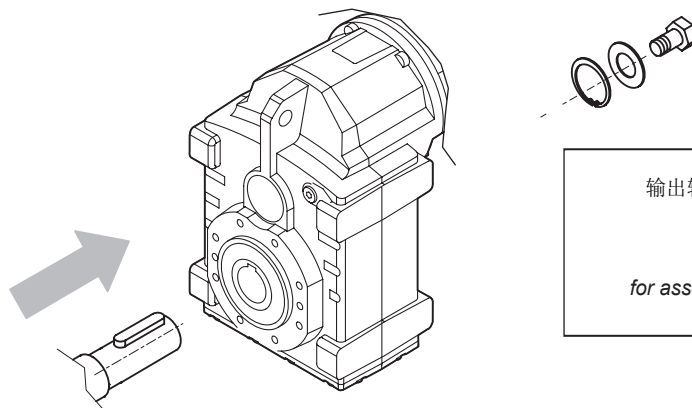
ITS...CW
ITS...CCW



逆止装置只允许有一个输出旋转方向。
使用前请按附图指定输出旋转方向。

The backstop device allows the output shaft to rotate in just one direction. Before using it, please specify output shaft rotation direction as shown in the figure.

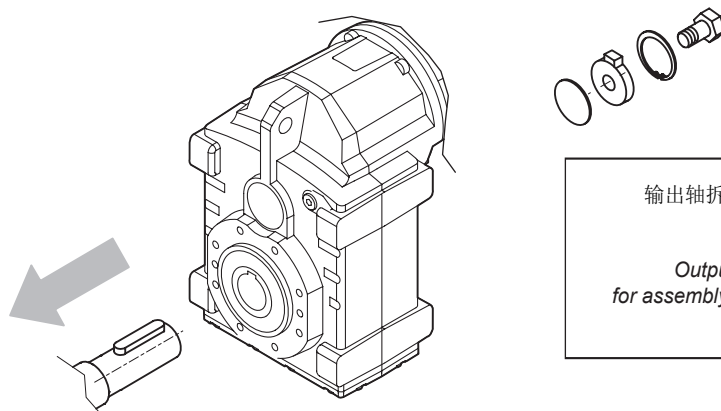
输出轴安装组件 / Output shaft assembly kit



输出轴安装组件可供选择：安装指导请联系我司技术部门。
螺栓组件不提供

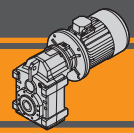
*Output shaft assembly kit available upon request:
for assembly instructions please contact our Technical Assistance.
Screws not provided*

输出轴拆装组件 / Output shaft disassembly kit



输出轴拆装组件可供选择：安装指导请联系我司技术部门。
螺栓组件不提供

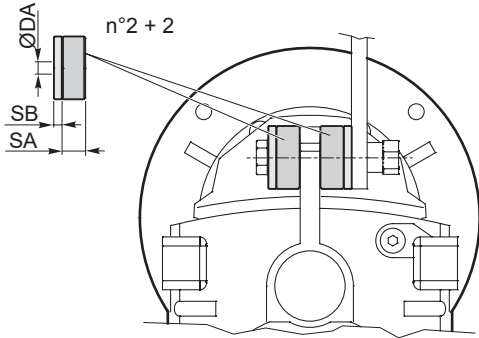
*Output shaft disassembly kit available upon request:
for assembly instructions please contact our Technical Assistance
Screws not provided*



扭力臂组件 / Torque arm kit

扭力臂组件可供选择：安装指导请联系我司技术部门！

*Torque arm kit available upon request:
for assembly instructions please contact our Technical Assistance*



扭力臂 / Torque arm

ITS	ØDA	SA	SB
922 923	13	15	5
932 933	21	30	10
942 943	21	30	10

ITS

 **TRANSTECNO SRL**
HEADQUARTERS

Company subject to the management
and coordination of INTERPUMP GROUP SPA
Via Caduti di Sabbiano, 11/D-E
40011 Anzola dell'Emilia (BO)
ITALY
T+39 051 64 25 811
F +39 051 73 49 43
sales@transtecno.com
www.transtecno.com

**TRANSTECNO®**
the modular gearmotor

MEMBER OF INTERPUMP GROUP




 **HANGZHOU INTERPUMP
POWER TRANSMISSIONS CO LTD**
No.4 Xiuyan Road Fengdu Industry Zone
Pingyao Town Yuhang District
Hangzhou City, Zhejiang Province
311115 – CHINA
T +86 571 86 92 02 60
info-china@transtecno.cn
www.transtecno.cn

 **TRANSTECNO IBÉRICA
THE MODULAR GEARMOTOR, S.A.**
Carrer de la Ciència, 45
08840 Viladecans (Barcelona) - SPAIN
T +34 931 598 950
info@transtecno.es
www.transtecno.es

 **TRANSTECNO B.V.**
Siliciumweg 32
3812 SX Amersfoort - NETHERLANDS
T +31(0) 33 45 19 505
info@transtecno.nl
www.transtecno.nl

 **TRANSTECNO AANDRIJFTECHNIEK B.V.**
Siliciumweg 32
3812 SX Amersfoort - NETHERLANDS
T +31 (0) 33 20 4 7 006
info@transtecnoaandrijftechnik.nl
www.transtecnoaandrijftechnik.nl

 **MA TRANSTECNO S.A.P.I. DE C.V.**
Julián Sepúlveda Dávila #107,
Parque Industrial SG
Apodaca, Nuevo León, CP. 66640
MÉXICO
T +52 8113340920
info@transtecno.com.mx
www.transtecno.com.mx


 **TRANSTECNO USA**
8 Creek Parkway,
Boothwyn PA 19061-8136 - UNITED STATES
T +1 (610) 4970154

TRANSTECNO USA – WEST COAST BRANCH
14561 Frylands Blvd SE
Monroe, WA 98272 - UNITED STATES
T +1 360-863-1300
usaoffice@transtecno.com
www.transtecno.com

 **TRANSTECNO CANADA**
51 B Caldari Road Unit 10
Vaughan, ON L4K 4G3 - CANADA
T +1 905 761 0762
canadaoffice@transtecno.com
www.transtecno.com

 **TRANSTECNO INDIA**
#6A, Sipcot Industrial complex, Phase-1,Elasagiri Road
Hosur – 635126 Tamilnadu - INDIA
T +91 4344 274434
M +91 81443 88800

TRANSTECNO INDIA – NORTH BRANCH
Plot No: 3 A, Sector 2, IIE, Sidcul, Pantnagar
U.S. Nagar, Uttarakhand – 263153 - INDIA
indiaoffice@transtecno.com
www.transtecno.com

 **TRANSTECNO BRAZIL**
Rua Gilberto de Zorzi, 525 Forqueta - CEP. 95115-730
CX Postal 3544 Caxias do Sul RS – BRAZIL

TRANSTECNO BRAZIL – SÃO PAULO BRANCH
R. Mafalda Barnabe Soliane, 314 – CEP. 13347-610
Indaiatuba, São Paulo - BRAZIL
T +55 19 3437 2520

TRANSTECNO BRAZIL – PORTO ALEGRE BRANCH
Rua Dr. Freire Alemão 155 / 402 - CEP. 90450-060
Auxiliadora Porto Alegre RS - BRAZIL
T +55 51 4042 0916
M +55 51 811 45 962
braziloffice@transtecno.com
www.transtecno.com.br

 **INTERPUMP ANTRIEBSTECHNIK GMBH**
Büro Stuttgart - GERMANY
T +49 (0)171 4781909
germanoffice@transtecno.com
www.transtecno.com

 **SALES OFFICE OCEANIA**
Unit 5, 12 Nyholt Drive, Yatala 4207
Queensland - AUSTRALIA
T +61 07 3800 0103
M +61 04 38060997

UNIT 9, 94 Boundary Rd, Sunshine West 3020
Victoria - AUSTRALIA
T +61 9312 4722
oceaniaoffice@transtecno.com
www.transtecno.com.au

www.transtecno.com