

TRANSTECNO[®]
the modular gearmotor

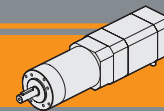
BLPM

BLPM



Motoriduttori brushless CC epicicloidali
Brushless DC planetary gearmotors

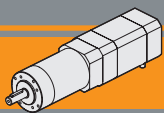




Indice	Index	Pag. Page
Caratteristiche tecniche	<i>Technical features</i>	CC2
Designazione	<i>Classification</i>	CC2
Simbologia	<i>Symbols</i>	CC2
Lubrificazione	<i>Lubrication</i>	CC2
Carichi radiali	<i>Radial loads</i>	CC3
Rapporti	<i>Ratios</i>	CC3
PM42 con motore brushless	<i>PM42 with brushless motor</i>	CC4

Questa sezione annulla e sostituisce ogni precedente edizione o revisione. Qualora questa sezione non Vi sia giunta in distribuzione controllata, l'aggiornamento dei dati ivi contenuto non è assicurato. **In tal caso la versione più aggiornata è disponibile sul nostro sito internet www.intecno-srl.com**

This section replaces any previous edition and revision. If you obtained this catalogue other than through controlled distribution channels, the most up to date content is not guaranteed. In this case the latest version is available on our web site www.intecno-srl.com



Motoriduttori brushless CC epicicloidali

Brushless DC planetary gearmotors

Caratteristiche tecniche

Technical features

Le caratteristiche principali dei motoriduttori epicicloidali brushless CC della serie PM sono:

- Alimentazione in bassa tensione 24 V
- Possibilità di montaggio encoder
- Coppie motori disponibili 0.12 Nm a 0,25 Nm
- Lubrificazione permanente a grasso
- Completamente in metallo
- Doppio cuscinetto su albero di uscita


The main features of brushless DC planetary gearmotors range PM series are:

- Low voltage power supply 24 V
- Suitable for encoder assembly
- Motor torque ratings available from 0.12 Nm up to 0,25 Nm
- Permanent grease long life lubrication
- Completely made out of metal
- Double ball bearing on output shaft

Designazione

Classification

RIDUTTORE / GEARBOX			
PM	42	2	46
Tipo Type	Grandezza Size	Stadi riduttore Gearbox stages	Rapporto in Ratio in
PM	42	1 2 3	Vedere tabelle See tables

MOTORE / MOTOR		
BLS012.240	24V	E
Tipo Type	Tensione Voltage	Opzioni Options
BLS012.240	24V	-
BLS018.240	24V	-
BLS025.24E	24V	Encoder
		

Simbologia

Symbols

Ns	n° stadi / No. stages	Pn	[W]	Potenza nominale / Nominal power
in	rapporto nominale / nominal ratio	V	[V]	Tensione / Voltage
ir	rapporto reale / real ratio	I	[A]	Assorbimento / Current
M _n	[Nm] coppia in uscita in funzionamento continuativo S1 output torque for continuous operation S1	IC		Classe di isolamento termico / Thermal insulation class
Rd	rendimento dinamico / efficiency	FF		Fattore di forma / Form factor
R ₂	[N] massimo carico radiale al centro dell'albero uscita max. radial load at output shaft centre	Mn	[Nm]	Coppia / Torque
A ₂	[N] massimo carico assiale / max. axial load	n ₁	[Rpm]	Giri / Speed
		IP		Grado di protezione / Enclosure protection
		Kg		Peso / Weight

Lubrificazione

Lubrication

I riduttori epicicloidali sono lubrificati in modo permanente, non richiedono quindi ulteriore manutenzione.

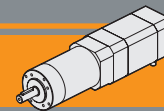
Questo gli consente di essere installati praticamente ovunque. Temperatura ambiente 0 ÷ 40 °C (in assenza di congelamento ed in assenza di condensa).

Per temperature diverse, contattare nostro UT.

Planetary gearboxes are life-time lubricated with grease, therefore they are maintenance free.

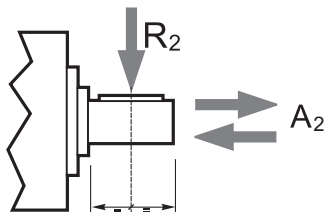
They can be installed in any location. Ambient temperature 0 ÷ 40 °C (in the absence of freezing and condensation).

For temperature outside this range please contact our technical dept.



Carichi radiali

Radial loads



Ns	Carichi Radiali R_2 [N] / Radial Load R_2 [N]
	PM42
1	160
2	230
3	300

Ns	Carichi Assiali A_2 [N] / Axial Load A_2 [N]
	PM 42
1	50
2	80
3	110

Rapporti

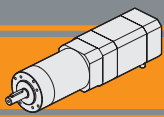
Ratios

PM 42		
Ns	in	ir
1	4	3.7
	4	4.28
	5	5.18
	7	6.75
2	14	13.73
	16	15.88
	18	18.36
	19	19.2
	22	22.2
	25	25.01
	27	26.85
	29	28.93
	35	34.97
	46	45.56
3	51	50.89
	59	58.85
	68	68.06
	71	71.16
	79	78.71
	93	92.7
	95	95.17
	100	99.5
	107	107.2
	115	115.07
	124	123.97
	130	129.62
	139	139.13
	150	149.9
	169	168.84
181	181.24	
195	195.26	
236	236.09	
308	307.54	

Rapporti preferenziali
Preferred ratios

IP 66

PM



Motoriduttori brushless CC epicicloidali

Brushless DC planetary gearmotors

PM42 con motore brushless CC

PM42 with DC brushless motor

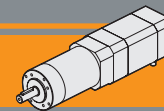
PM42			BLS012.240						BLS018.240										
			24V						24V										
Ns	ir	in	n _{2MIN} [rpm]			n _{2MAX} [rpm]			n _{1MAX} [rpm]	n _{2MIN} [rpm]			n _{2MAX} [rpm]			n _{1MAX} [rpm]			
			M ₂ [Nm]	sf		M ₂ [Nm]	sf			M ₂ [Nm]	sf		M ₂ [Nm]	sf					
1	3.7	4	108	0.4	12.0	1081	0.4	7.2	4000	108	0.5	8.1	1081	0.5	4.8	4000			
	4.28	4	93	0.4	10.3	935	0.4	6.2		93	0.6	7.0	935	0.6	4.2				
	5.18	5	77	0.5	8.5	772	0.5	5.1		77	0.8	5.8	772	0.8	3.5				
	6.75	7	59	0.7	6.6	593	0.7	3.9		59	1.0	4.4	593	1.0	2.7				
2	13.73	14	29	1.3	8.6	291	1.3	5.2	4000	29	1.9	5.8	291	1.9	3.5	4000			
	15.88	16	25	1.5	7.4	252	1.5	4.5		25	2.2	5.0	252	2.2	3.0				
	18.36	18	22	1.7	6.4	218	1.7	3.9		22	2.5	4.3	218	2.5	2.6				
	19.2	19	21	1.8	6.1	208	1.8	3.7		21	2.7	4.2	208	2.7	2.5				
	22.2	22	18	2.1	5.3	180	2.1	3.2		18	3.1	3.6	180	3.1	2.2				
	25.01	25	16	2.3	4.7	160	2.3	2.8		16	3.5	3.2	160	3.5	1.9				
	26.9	27	15	2.5	4.4	149	2.5	2.6		15	3.7	3.0	149	3.7	1.8				
	28.9	29	14	2.7	4.1	138	2.7	2.4		14	4.0	2.8	138	4.0	1.7				
	35.0	35	11.4	3.3	3.4	114	3.3	2.0		11.4	4.9	2.3	114	4.9	1.4				
	45.6	46	8.8	4.3	2.6	88	4.3	1.6		8.8	6.3	1.7	88	6.3	1.0				
	3	50.9	51	7.9	4.5	5.0	79	4.5		3.0	4000	7.9	6.6	3.4	79		6.6	2.0	4000
		58.9	59	6.8	5.1	4.3	68	5.1		2.6		6.8	7.6	2.9	68		7.6	1.7	
68.1		68	5.9	6.0	3.7	59	6.0	2.2	5.9	8.8		2.5	59	8.8	1.5				
71.2		71	5.6	6.2	3.6	56	6.2	2.1	5.6	9.2		2.4	56	9.2	1.4				
78.7		79	5.1	6.9	3.2	51	6.9	1.9	5.1	10.2		2.2	51	10	1.3				
92.7		93	4.3	8.1	2.7	43	8.1	1.6	4.3	12.0		1.8	43	12	1.1				
95.2		95	4.2	8.3	2.7	42	8.3	1.6	4.2	12.3		1.8	42	12	1.1				
99.5		100	4.0	8.7	2.5	40	8.7	1.5	4.0	12.9		1.7	40	13	1.0				
107.2		107	3.7	9.4	2.4	37	9.4	1.4	3.7	13.9		1.6	37	14	1.0				
115.07		115	3.5	10	2.2	35	10	1.3	3.5	15		1.5	35	15	0.9				
123.97		124	3.2	11	2.0	32	11	1.2	3.2	16		1.4	32	16	0.8				
129.62		130	3.1	11	1.9	31	11	1.2	3.1	17		1.3	31	17	0.8				
139.13		139	2.9	12	1.8	29	12	1.1	2.9	18		1.2	29	18	0.7				
149.9		150	2.7	13	1.7	27	13	1.0	2.7	19		1.1	27	18	0.7				
168.84		169	2.4	15	1.5	24	15	0.9	2.4	22		1.0	24	18	0.7				
181.24		181	2.2	16	1.4	22	16	0.8	2.2	23		0.9	22	18	0.7				
195.26	195	2.0	17	1.3	20	17	0.8	2.0	25	0.9	20	18	0.7						
236.09	236	1.7	21	1.1	17	18	0.7	1.7	31	0.7	17	18	0.7						
307.54	308	1.3	27	0.8	13.0	18	0.7	1.3	31	0.7	13.0	18	0.7						

NOTA: per servizio continuo o altamente intermittente, contattare il servizio tecnico

NOTE: for continuous or highly intermittent duty, please contact our technical service

Rapporti preferenziali
Preferred ratios

Attenzione: superamento della coppia nominale supportata dal riduttore per servizio S1. Contattare il ns. servizio tecnico
Attention: rated torque withstood by gear reducer for service in S1 is exceeded. Please, contact our technical office.

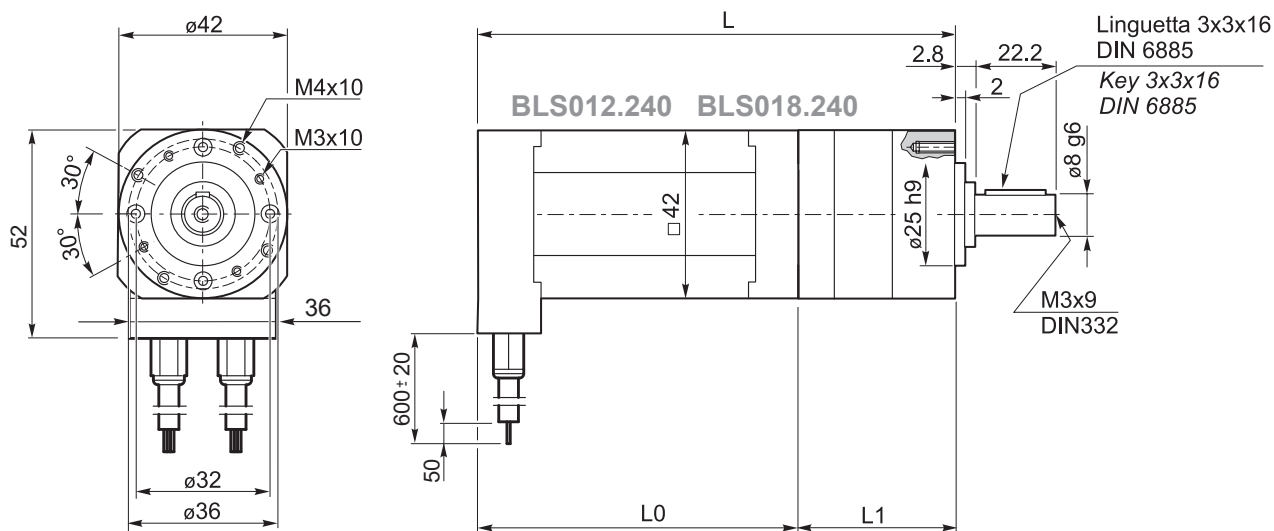


PM42 con motore brushless CC

PM42 with DC brushless motor

Tipo Type	Numero di poli Number of poles	Numero di fasi Number of phase	Tensione Rated voltage [V]	Numero di giri Rated speed [rpm]	Coppia nominale Rated torque [Nm]	Potenza nominale Rated power [W]
BLS012.240	8	3	24	4000	0.125	52.5
BLS018.240	8	3	24	4000	0.185	77.5
Tipo Type	Coppia massima Peak torque [Nm]	Corrente nominale Rated current [A]	Resistenza Resistance [Ω]	Induttanza Inductance [mH]	Corrente massima Peak current [A]	Peso Weight [kg]
BLS012.240	0.25	3.5	0.8	1.2	7.0	0.45
BLS018.240	0.37	5.0	0.55	0.8	10.0	0.65

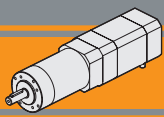
Azionamenti Drives



PM42	Ns	L1	BLS012.240			BLS018.240		
			L0	L	Kg	L0	L	Kg
	1	67	71	138	0.70	91	158	0.90
	2	80		151	0.81		171	1.01
	3	93		164	0.92		184	1.12

IP 66

PM



Motoriduttori brushless CC epicicloidali

Brushless DC planetary gearmotors

PM42 con motore brushless CC

PM42 with DC brushless motor

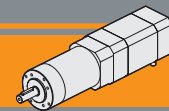
PM42			BLS025.240						n _{1MAX} [rpm]
			24V						
Ns	ir	in	n _{2MIN} [rpm]			n _{2MAX} [rpm]			
			M ₂ [Nm]	sf	M ₂ [Nm]	sf	M ₂ [Nm]	sf	
1	3.7	4	108	0.7	6.0	1081	0.7	3.6	4000
	4.28	4	93	0.9	5.2	935	0.9	3.1	
	5.18	5	77	1.0	4.3	772	1.0	2.6	
	6.75	7	59	1.4	3.3	593	1.4	2.0	
2	13.73	14	29	2.6	4.3	291	2.6	2.6	
	15.88	16	25	3.0	3.7	252	3.0	2.2	
	18.36	18	22	3.4	3.2	218	3.4	1.9	
	19.2	19	21	3.6	3.1	208	3.6	1.8	
	22.2	22	18	4.2	2.7	180	4.2	1.6	
	25.01	25	16	4.7	2.4	160	4.7	1.4	
	26.9	27	15	5.0	2.2	149	5.0	1.3	
	28.9	29	14	5.4	2.0	138	5.4	1.2	
	35.0	35	11	6.6	1.7	114	6.6	1.0	
	45.6	46	8.8	8.5	1.3	88	8.5	0.8	
3	50.9	51	7.9	8.9	2.5	79	8.9	1.5	
	58.9	59	6.8	10	2.1	68	10	1.3	
	68.1	68	5.9	12	1.9	59	12	1.1	
	71.2	71	5.6	12	1.8	56	12	1.1	
	78.7	79	5.1	14	1.6	51	14	1.0	
	92.7	93	4.3	16	1.4	43	16	0.8	
	95.2	95	4.2	17	1.3	42	17	0.8	
	99.5	100	4.0	17	1.3	40	17	0.8	
	107.2	107	3.7	19	1.2	37	19	0.7	
	115.07	115	3.5	20	1.1	35	20	0.7	
	123.97	124	3.2	22	1.0	32	20	0.7	
	129.62	130	3.1	23	1.0	31	20	0.7	
	139.13	139	2.9	24	0.9	29	20	0.7	
	149.9	150	2.7	26	0.8	27	20	0.7	
	168.84	169	2.4	30	0.7	24	20	0.7	
	181.24	181	2.2	30	0.7	22	20	0.7	
195.26	195	2.0	30	0.7	20	20	0.7		
236.09	236	1.7	30	0.7	17	20	0.7		
307.54	308	1.3	30	0.7	13	20	0.7		

NOTA: per servizio continuo o altamente intermittente, contattare il servizio tecnico

NOTE: for continuous or highly intermittent duty, please contact our technical service

Rapporti preferenziali
Preferred ratios

Attenzione: superamento della coppia nominale supportata dal riduttore per servizio S1. Contattare il ns. servizio tecnico
Attention: rated torque withstood by gear reducer for service in S1 is exceeded. Please, contact our technical office.

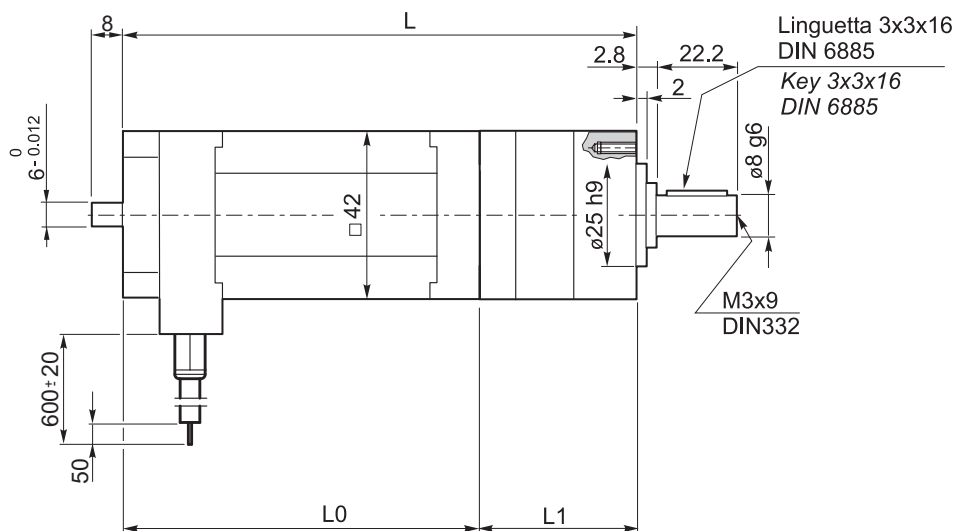
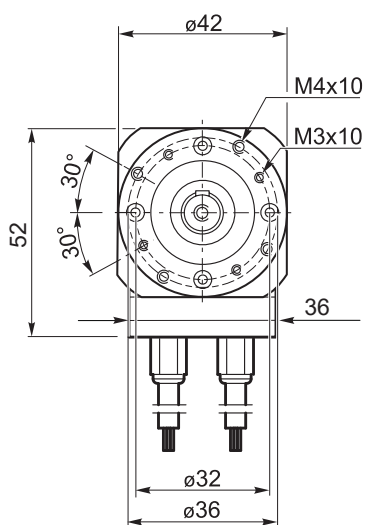


PM42 con motore brushless CC

PM42 with DC brushless motor

Tipo Type	Numero di poli Number of poles	Numero di fasi Number of phase	Tensione Rated voltage [V]	Numero di giri Rated speed [rpm]	Coppia nominale Rated torque [Nm]	Coppia massima Peak torque [Nm]
BLS025.24E	8	3	24	4000	0.25	0.50
	Potenza nominale Rated power [W]	Corrente nominale Rated current [A]	Resistenza Resistance [Ω]	Induttanza Inductance [mH]	Corrente massima Peak current [A]	Peso Weight [kg]
	105	7	0.3	0.5	14	0.8

Azionamenti Drives



Encoder



PM42	Ns	L1	BL025.24E		
			L0	L	Kg
	1	67	118	185	1.05
	2	80	118	198	1.16
	3	93	118	211	1.27

IP 66

PM

 **TRANSTECNO SRL**
HEADQUARTERS

Company subject to the management
and coordination of INTERPUMP GROUP SPA
Via Caduti di Sabbiuno, 11/D-E
40011 Anzola dell'Emilia (BO)
ITALY
T+39 051 64 25 811
F +39 051 73 49 43
sales@transtecno.com
www.transtecno.com


TRANSTECNO®
the modular gearmotor
MEMBER OF INTERPUMP GROUP




 **HANGZHOU INTERPUMP
POWER TRANSMISSIONS CO LTD**
No.4 Xiuyan Road Fengdu Industry Zone
Pingyao Town Yuhang District
Hangzhou City, Zhejiang Province
311115 – CHINA
T +86 571 86 92 02 60
info-china@transtecno.cn
www.transtecno.cn

 **TRANSTECNO IBÉRICA
THE MODULAR GEARMOTOR, S.A.**
Carrer de la Ciència, 45
08840 Viladecans (Barcelona) - SPAIN
T +34 931 598 950
info@transtecno.es
www.transtecno.es

 **TRANSTECNO B.V.**
Siliciumweg 32
3812 SX Amersfoort - NETHERLANDS
T +31(0) 33 45 19 505
info@transtecno.nl
www.transtecno.nl

 **TRANSTECNO AANDRIJFTECHNIEK B.V.**
Siliciumweg 32
3812 SX Amersfoort - NETHERLANDS
T +31 (0) 33 20 47 006
info@transtecnoaandrijftechniek.nl
www.transtecnoaandrijftechniek.nl

 **MA TRANSTECNO S.A.P.I. DE C.V.**
Julián Sepúlveda Dávila #107,
Parque Industrial SG
Apodaca, Nuevo León, CP. 66640
MÉXICO
T +52 8113340920
info@transtecno.com.mx
www.transtecno.com.mx


 **TRANSTECNO USA**
8 Creek Parkway,
Boothwyn PA 19061-8136 - UNITED STATES
T +1 (610) 4970154

TRANSTECNO USA – WEST COAST BRANCH
14561 Fryelands Blvd SE
Monroe, WA 98272 - UNITED STATES
T +1 360-863-1300
usaoffice@transtecno.com
www.transtecno.com

 **TRANSTECNO CANADA**
51 B Caldari Road Unit 10
Vaughan, ON L4K 4G3 - CANADA
T +1 905 761 0762
canadaoffice@transtecno.com
www.transtecno.com

 **TRANSTECNO INDIA**
#6A, Sipcot Industrial complex, Phase-1, Elasagiri Road
Hosur – 635126 Tamilnadu - INDIA
T +91 4344 274434
M +91 81443 88800

TRANSTECNO INDIA – NORTH BRANCH
Plot No: 3 A, Sector 2, IIE, Sidcul, Pantnagar
U.S. Nagar, Uttarakhand – 263153 - INDIA
indiaoffice@transtecno.com
www.transtecno.com

 **TRANSTECNO BRAZIL**
Rua Gilberto de Zorzi, 525 Forqueta - CEP. 95115-730
CX Postal 3544 Caxias do Sul RS – BRAZIL

TRANSTECNO BRAZIL – SÃO PAULO BRANCH
R. Mafalda Barnabe Soliane, 314 – CEP. 13347-610
Indaiatuba, São Paulo - BRAZIL
T +55 19 3437 2520

TRANSTECNO BRAZIL – PORTO ALEGRE BRANCH
Rua Dr. Freire Alemão 155 / 402 - CEP. 90450-060
Auxiliadora Porto Alegre RS - BRAZIL
T +55 51 4042 0916
M +55 51 811 45 962
braziloffice@transtecno.com
www.transtecno.com.br

 **INTERPUMP ANTRIEBSTECHNIK GMBH**
Büro Stuttgart - GERMANY
T +49 (0)171 4781909
germanoffice@transtecno.com
www.transtecno.com

 **SALES OFFICE OCEANIA**
Unit 5, 12 Nyholt Drive, Yatala 4207
Queensland - AUSTRALIA
T +61 07 3800 0103
M +61 04 38060997

UNIT 9, 94 Boundary Rd, Sunshine West 3020
Victoria - AUSTRALIA
T +61 9312 4722
oceaniaoffice@transtecno.com
www.transtecno.com.au