

TRANSTECNO[®]
the modular gearmotor

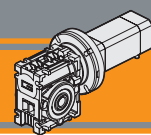
BLCM

BLCM



Motoriduttori brushless CC a vite senza fine
Brushless DC wormgearmotors

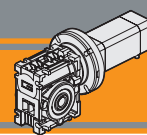




Indice	Index	Pag. Page
Caratteristiche tecniche	<i>Technical features</i>	CB2
Designazione	<i>Classification</i>	CB2
Simbologia	<i>Symbols</i>	CB2
Lubrificazione	<i>Lubrication</i>	CB2
Carichi radiali	<i>Radial loads</i>	CB3
Dati di dentatura	<i>Toothing data</i>	CB3
Rendimento	<i>Efficiency</i>	CB3
CM026/CL026 con motore brushless	<i>CM026/CL026 with brushless motor</i>	CB4
Dimensioni	<i>Dimensions</i>	CB5
Accessori	<i>Accessories</i>	CB6
Opzioni	<i>Options</i>	CB6

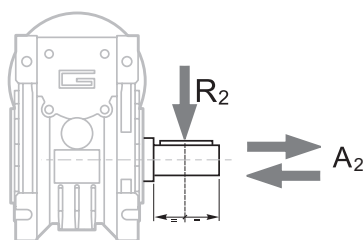
Questa sezione annulla e sostituisce ogni precedente edizione o revisione. Qualora questa sezione non Vi sia giunta in distribuzione controllata, l'aggiornamento dei dati ivi contenuto non è assicurato. **In tal caso la versione più aggiornata è disponibile sul nostro sito internet www.transtecno.com**

This section replaces any previous edition and revision. If you obtained this catalogue other than through controlled distribution channels, the most up to date content is not guaranteed. In this case the latest version is available on our web site www.transtecno.com



Carichi radiali

Radial loads

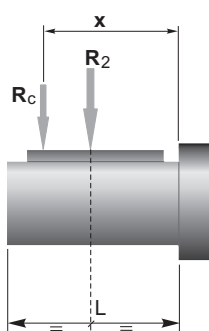


$$A_2 = R_2 \times 0.2$$

n ₂ [min ⁻¹]	R ₂ [N]
	CM026
600	271
400	310
300	342
200	391
150	479
120	514
100	547
75	609
60	610
50	610
38	610
30	610

Quando il carico radiale risultante non è applicato sulla mezza-
ria dell'albero occorre calcolare quello effettivo con la seguente
formula:

When the resulting radial load is not applied on the centre line
of the shaft it is necessary to calculate the effective load with the
following formula:



$$R_c = \frac{R_2 \cdot a}{(b + x)} \leq R_{2MAX}$$

$$R \leq R_c$$

a, b = valori riportati nella tabella
a, b = values given in the table

	CM
	026
a	56
b	43
R _{2MAX}	610

Dati di dentatura

Toothing data

	Dati della coppia vite-corona Worm wheel data	Rapporto / Ratio								
		5	7.5	10	15	20	30	40	50	60
CM026	Z	6	4	3	2	2	1	1	1	1
	β	34° 35'	24° 41'	19° 1'	12° 57'	10° 30'	6° 33'	5° 17'	4° 26'	3° 49'

Rendimento

Efficiency

	n ₁ [min ⁻¹]	Rendimento Efficiency	Rapporto / Ratio								
			5	7.5	10	15	20	30	40	50	60
CM026	2800	Rd	0.89	0.87	0.85	0.83	0.80	0.73	0.68	0.64	0.60
		Rs	0.72	0.71	0.68	0.61	0.56	0.46	0.41	0.36	0.34

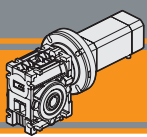
Reversibilità e irreversibilità

Reversibility and irreversibility

La tabella sottostante riporta a titolo puramente
indicativo i vari gradi di reversibilità/irreversibilità
nei riduttori a vite senza fine in funzione del rendi-
mento dinamico Rd e statico Rs.

The table below is provided for reference purposes
only. It contains the various degrees of reversibi-
lity/irreversibility of wormgearboxes in relation to
dynamic Rd and static Rs efficiency.

Rd	Reversibilità e irreversibilità dinamica	Dynamic reversibility and irreversibility
> 0.60	Reversibilità dinamica	Dynamic reversibility
0.50 - 0.60	Reversibilità dinamica incerta	Uncertain dynamic reversibility
0.40 - 0.50	Buona irreversibilità dinamica	Good dynamic irreversibility
<0.40	Irreversibilità dinamica	Dynamic irreversibility
Rs	Reversibilità e irreversibilità statica	Static reversibility and irreversibility
> 0.55	Reversibilità statica	Static reversibility
0.50 - 0.55	Reversibilità statica incerta	Uncertain static reversibility
<0.50	Irreversibilità statica	Static irreversibility



Motoriduttori brushless CC a vite senza fine

Brushless DC wormgearmotors

CM026 con motore brushless CC

CM026with DC brushless motor

CM026	BLS012.240						BLS018.240					
	24V						24V					
	n ₂ MIN		n ₂ MAX		n ₁ MAX [rpm]	n ₂ MIN		n ₂ MAX		n ₁ MAX [rpm]		
M ₂	sf	M ₂	sf	M ₂		sf	M ₂	sf				
5	80	0.5	45	800	0.6	16	80	0.7	31	800	0.8	11
7.5	53	0.7	33	533	0.8	12	53	1.1	22	533	1.2	8.0
10	40	0.9	26	400	1.1	9.1	40	1.4	17	400	1.6	6.1
15	27	1.3	19	267	1.6	6.2	27	1.9	13	267	2.3	4.2
20	20	1.6	14	200	2.0	4.8	20	2.4	10	200	3.0	3.3
30	13	2.1	12	133	2.7	3.8	13	3.1	8.2	133	4.1	2.6
40	10	2.5	8.0	100	3.4	2.8	10	3.7	5.4	100	5.0	1.9
50	8	2.8	6.8	80	4.0	2.2	8	4.2	4.6	80	5.9	1.5
60	7	3.2	5.4	67	4.5	1.8	7	4.7	3.6	67	6.7	1.2

NOTA: per servizio continuo o altamente intermittente, contattare il servizio tecnico

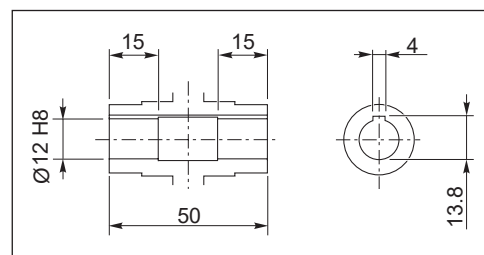
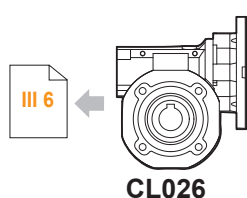
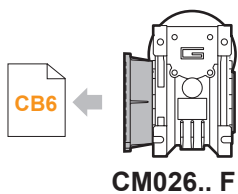
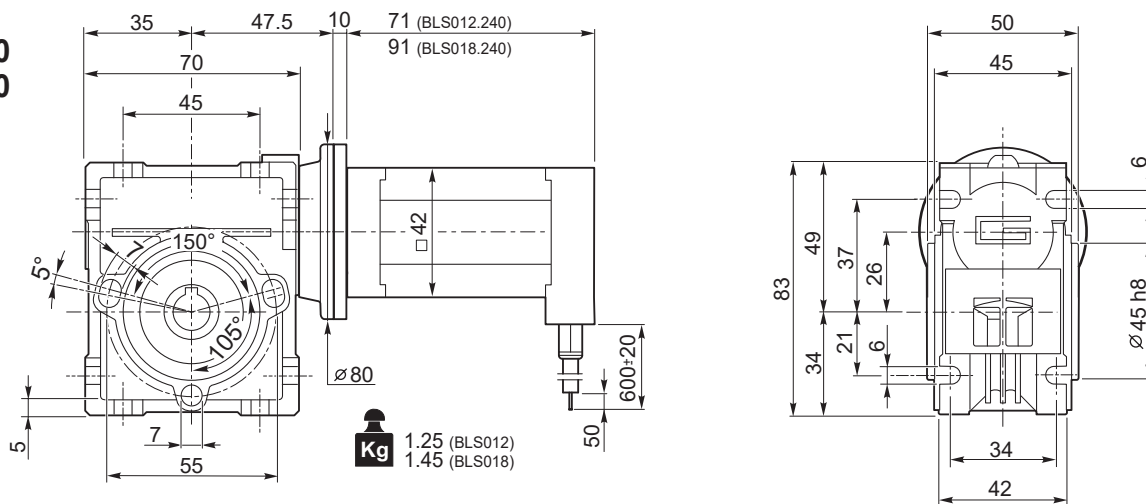
NOTE: for continuous or highly intermittent duty, please contact our technical service

Tipo Type	Numero di poli Number of poles	Numero di fasi Number of phase	Tensione Rated voltage [V]	Numero di giri Rated speed [rpm]	Coppia nominale Rated torque [Nm]	Potenza nominale Rated power [W]
BLS012.240	8	3	24	4000	0.125	52.5
BLS018.240	8	3	24	4000	0.185	77.5

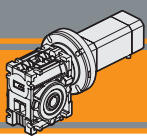
Tipo Type	Coppia massima Peak torque [Nm]	Corrente nominale Rated current [A]	Resistenza Resistance [ohm]	Induttanza Inductance [mH]	Corrente massima Peak current [A]	Peso Weight [kg]
BLS012.240	0.25	3.5	0.8	1.2	7.0	0.45
BLS018.240	0.37	5.0	0.55	0.8	10.0	0.65



CM026..U
+
BLS012.240
BLS018.240



Albero lento cavo / Hollow output shaft

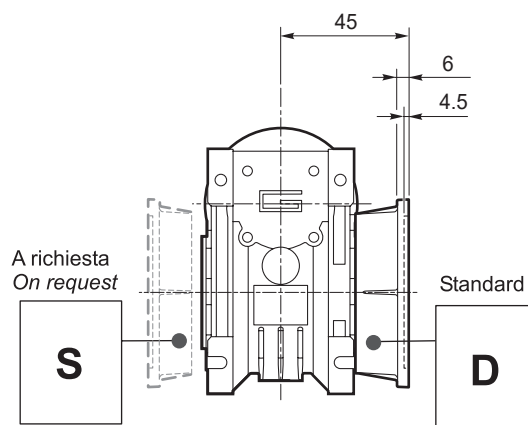
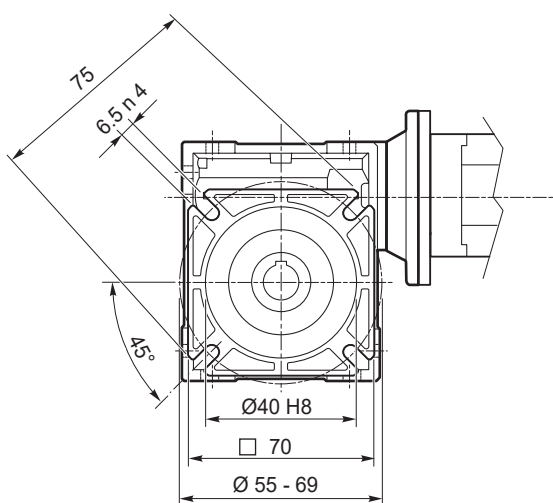


Motoriduttori brushless CC a vite senza fine Brushless DC wormgearmotors

Dimensioni

Dimensions

CM026/... F... Flange uscita / Output flanges



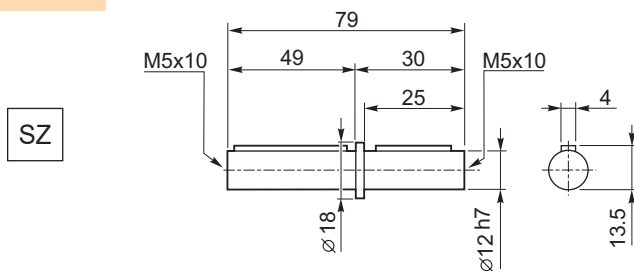
Accessori

Accessories

Albero lento

Output shaft

CM 026

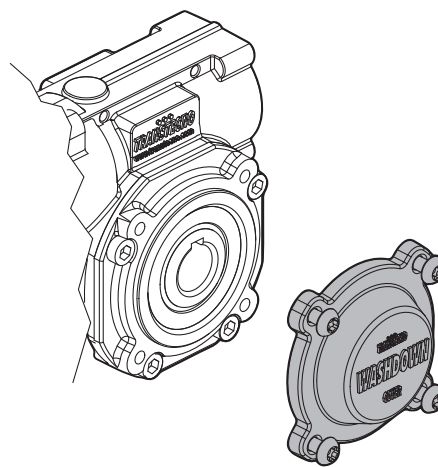
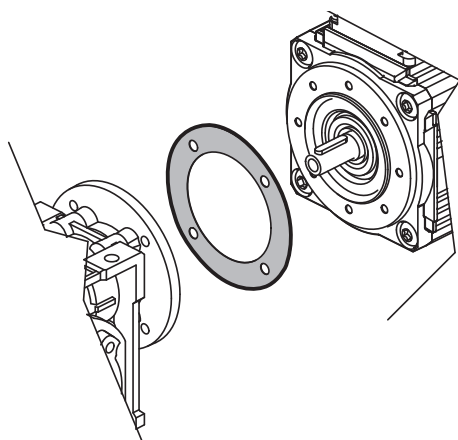


Opzioni

Options

Guarnizione CA (a richiesta) / Rubber gasket (on request)

Coperchio Washdown (a richiesta) / Washdown cover (on request)



 **TRANSTECNO SRL**
HEADQUARTERS

Company subject to the management
and coordination of INTERPUMP GROUP SPA
Via Caduti di Sabbiano, 11/D-E
40011 Anzola dell'Emilia (BO)
ITALY
T+39 051 64 25 811
F +39 051 73 49 43
sales@transtecno.com
www.transtecno.com


TRANSTECNO®
the modular gearmotor
MEMBER OF INTERPUMP GROUP




 **HANGZHOU INTERPUMP
POWER TRANSMISSIONS CO LTD**
No.4 Xiuyan Road Fengdu Industry Zone
Pingyao Town Yuhang District
Hangzhou City, Zhejiang Province
311115 – CHINA
T +86 571 86 92 02 60
info-china@transtecno.cn
www.transtecno.cn

 **TRANSTECNO IBÉRICA
THE MODULAR GEARMOTOR, S.A.**
Carrer de la Ciència, 45
08840 Viladecans (Barcelona) - SPAIN
T +34 931 598 950
info@transtecno.es
www.transtecno.es

 **TRANSTECNO B.V.**
Siliciumweg 32
3812 SX Amersfoort - NETHERLANDS
T +31(0) 33 45 19 505
info@transtecno.nl
www.transtecno.nl

 **TRANSTECNO AANDRIJFTECHNIEK B.V.**
Siliciumweg 32
3812 SX Amersfoort - NETHERLANDS
T +31 (0) 33 20 47 006
info@transtecnoaandrijftechniek.nl
www.transtecnoaandrijftechniek.nl

 **MA TRANSTECNO S.A.P.I. DE C.V.**
Julián Sepúlveda Dávila #107,
Parque Industrial SG
Apodaca, Nuevo León, CP. 66640
MÉXICO
T +52 8113340920
info@transtecno.com.mx
www.transtecno.com.mx


 **TRANSTECNO USA**
8 Creek Parkway,
Boothwyn PA 19061-8136 - UNITED STATES
T + 1 (610) 4970154

TRANSTECNO USA – WEST COAST BRANCH
14561 Fryelands Blvd SE
Monroe, WA 98272 - UNITED STATES
T +1 360-863-1300
usaoffice@transtecno.com
www.transtecno.com

 **TRANSTECNO CANADA**
51 B Caldari Road Unit 10
Vaughan, ON L4K 4G3 - CANADA
T +1 905 761 0762
canadaoffice@transtecno.com
www.transtecno.com

 **TRANSTECNO INDIA**
#6A, Sipcot Industrial complex, Phase-1,Elasagiri Road
Hosur – 635126 Tamilnadu - INDIA
T +91 4344 274434
M +91 81443 88800

TRANSTECNO INDIA – NORTH BRANCH
Plot No: 3 A, Sector 2, IIE, Sidcul, Pantnagar
U.S. Nagar, Uttarakhand – 263153 - INDIA
indiaoffice@transtecno.com
www.transtecno.com

 **TRANSTECNO BRAZIL**
Rua Gilberto de Zorzi, 525 Forqueta - CEP. 95115-730
CX Postal 3544 Caxias do Sul RS – BRAZIL

TRANSTECNO BRAZIL – SÃO PAULO BRANCH
R. Mafalda Barnabe Soliane, 314 – CEP. 13347-610
Indaiatuba, São Paulo - BRAZIL
T +55 19 3437 2520

TRANSTECNO BRAZIL – PORTO ALEGRE BRANCH
Rua Dr. Freire Alemão 155 / 402 - CEP. 90450-060
Auxiliadora Porto Alegre RS - BRAZIL
T +55 51 4042 0916
M +55 51 811 45 962
braziloffice@transtecno.com
www.transtecno.com.br

 **INTERPUMP ANTRIEBSTECHNIK GMBH**
Büro Stuttgart - GERMANY
T +49 (0)171 4781909
germanoffice@transtecno.com
www.transtecno.com

 **SALES OFFICE OCEANIA**
Unit 5, 12 Nyholt Drive, Yatala 4207
Queensland - AUSTRALIA
T +61 07 3800 0103
M +61 04 38060997

UNIT 9, 94 Boundary Rd, Sunshine West 3020
Victoria - AUSTRALIA
T +61 9312 4722
oceaniaoffice@transtecno.com
www.transtecno.com.au