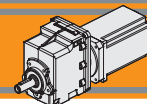




Motoriduttori brushless CC
ad ingranaggi cilindrici
Brushless DC helical in-line gearmotors

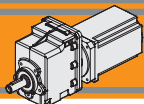




Indice	Index	Pag. Page
Caratteristiche tecniche	<i>Technical features</i>	BB2
Designazione	<i>Classification</i>	BB2
Simbologia	<i>Symbols</i>	BB2
Lubrificazione e temperatura	<i>Lubrication and temperature</i>	BB3
Carichi radiali	<i>Radial loads</i>	BB3
CMG002 con motore brushless BLS 043.240	<i>CMG002 with brushless motor BLS 043.240</i>	BB4
CMG002 con motore brushless BL 070.240	<i>CMG002 with brushless motor BL 070.240</i>	BB5
CMG002 con motore brushless BL 070.480	<i>CMG002 with brushless motor BL 070.480</i>	BB5
CMG002 con motore brushless BL 070.48.80	<i>CMG002 with brushless motor BL 070.48.80</i>	BB6
CMG002 con motore brushless BL 140.480	<i>CMG002 with brushless motor BL 140.480</i>	BB7
CMG002 con motore brushless BL 200.48.95	<i>CMG002 with brushless motor BL 200.48.95</i>	BB8
CMG002 con motore brushless BL 210.480	<i>CMG002 with brushless motor BL 210.480</i>	BB9
CMG012 con motore brushless BL 140.480	<i>CMG012 with brushless motor BL 140.480</i>	BB10
CMG012 con motore brushless BL 200.48.95	<i>CMG012 with brushless motor BL 200.48.95</i>	BB11
CMG012 con motore brushless BL210.480	<i>CMG012 with brushless motor BL 210.480</i>	BB12
CMG012 con motore brushless BL 400.48.120	<i>CMG012 with brushless motor BL 400.48.120</i>	BB13
CMG022 con motore brushless BL 200.48	<i>CMG022 with brushless motor BL 200.48</i>	BB14
CMG022 con motore brushless BL 210.480	<i>CMG022 with brushless motor BL 210.480</i>	BB15
CMG022 con motore brushless BL 400.48.120	<i>CMG022 with brushless motor BL 400.48.120</i>	BB16
CMG032 con motore brushless BL 400.48.120	<i>CMG032 with brushless motor BL 400.48.120</i>	BB17
CMG042 con motore brushless BL 400.48.120	<i>CMG042 with brushless motor BL 400.48.120</i>	BB18
Dati tecnici	<i>Technical data</i>	BC22
Dimensioni CMG con flange motore AS	<i>CMG dimensions with motor flanges AS</i>	BC22

Questa sezione annulla e sostituisce ogni precedente edizione o revisione. Qualora questa sezione non Vi sia giunta in distribuzione controllata, l'aggiornamento dei dati ivi contenuto non è assicurato. **In tal caso la versione più aggiornata è disponibile sul nostro sito internet www.transtecno.com**

This section replaces any previous edition and revision. If you obtained this catalogue other than through controlled distribution channels, the most up to date content is not guaranteed. In this case the latest version is available on our web site www.transtecno.com



Motoriduttori brushless CC ad ingranaggi cilindrici Brushless DC helical in-line gearmotors

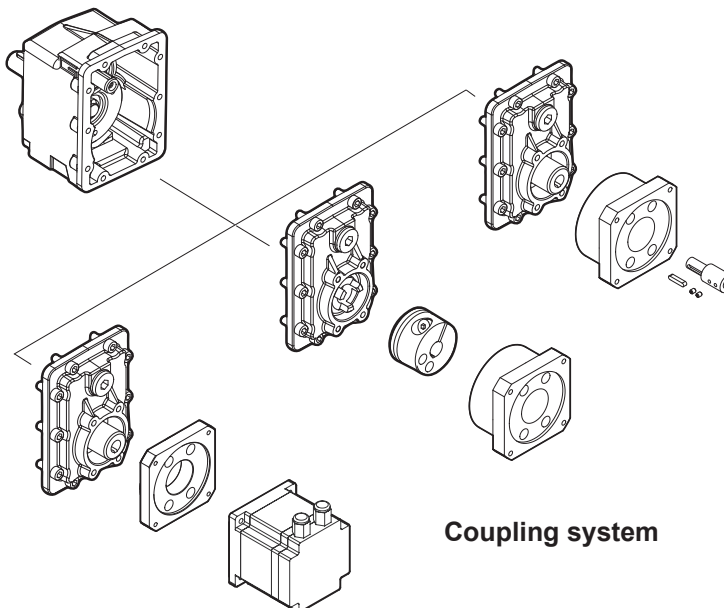
Caratteristiche tecniche

Technical features

Le caratteristiche principali dei motoriduttori brushless CC ad ingranaggi cilindrici della serie CMG sono:

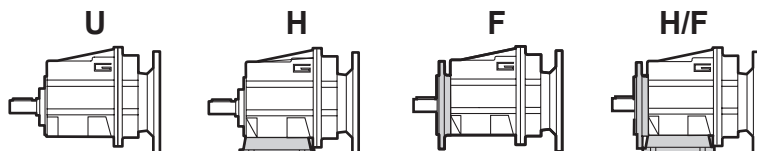
The main features of brushless DC helical gearmotors range CMG series are:

- Alimentazione in bassa tensione 24/36/48 Vcc
- Motore protezione IP55
- Coppie motori disponibili da 0.43 Nm a 4.2 Nm
- Lubrificazione permanente con olio sintetico
- Carcasse dei riduttori in pressofusione di alluminio
- Ingranaggi cilindrici a denti elicoidali, induriti e rettificati
- Disponibili per accoppiamento ingresso motore con giunto elastico
- Low voltage power supply 24/36/48 Vdc
- Motor protection IP55
- Motor torque ratings available from 0.43 Nm up to 4.2 Nm
- Permanent synthetic oil long life lubrication
- Die cast aluminum housing
- Ground-hardened helical gears
- Available for motor input coupling with elastic coupling



Designazione

Classification



MOTORIDUTTORE / GEARBOX

CMG	002	U	8.99	D20	FX
Tipo Type	Grandezza Size	Versione Version	Rapporto Ratio	Albero uscita Output shaft	Giunto elastico Flexible coupling
CMG	002 012 022 032 042	U... H... F... H.../F...	vedi tabelle see tables	vedi tabelle see tables	FX

MOTORE / MOTOR

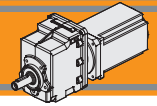
BL070.480	48V	BR
Tipo Type	Tensione Voltage	Freno Brake
BLS043.240	24V-36V	24V
BL070.240	24V	48V
BL070.24B	24V	
BL070.48B	48V	
BL070.480	48V	
BL070.48.80	24V-48V	
BL140.480	48V	
BL200.48.95	24V-48V	
BL210.480	24V-48V	
BL210.48E	48V	
BL400.48.120	48V	



Simbologia

Symbols

i	Rapporto di riduzione / ratio	V	[V]	Tensione / Voltage
M ₂	[Nm] Coppia in uscita in funzionamento continuativo S1 Output torque for continuous operation S1	I	[A]	Assorbimento / Current
Rd	Rendimento dinamico / efficiency	M ₂	[Nm]	Coppia / Torque
R ₂	[N] Massimo carico radiale al centro dell'albero uscita Max. radial load at output shaft centre	n _{1MAX}	[Rpm]	Giri max entrata / Max Input Speed
A ₂	[N] Massimo carico assiale / max. axial load	IP		Grado di protezione / Enclosure protection
sf	Fattore di servizio / Service factor	Kg		Peso / Weight
		n ₂	[Rpm]	Giri in uscita / Output Speed



Lubrificazione e temperatura

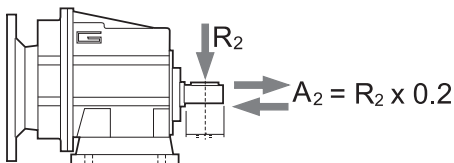
Lubrication and temperature

Tutti i riduttori CMG sono forniti completi di lubrificante sintetico viscosità 320, pertanto possono essere installati in qualunque posizione di montaggio e non necessitano di manutenzione.
Temperatura ambiente 0 ÷ 40 °C (in assenza di congelamento ed in assenza di condensa).
Per temperature diverse, contattare nostro UT.

Permanent synthetic oil long-life lubrication (viscosity grade 320) makes it possible to use CMG in all mounting positions; for this reason they can be installed in any assembly position and do not require maintenance.
Ambient temperature 0 ÷ 40 °C (in the absence of freezing and condensation).
For temperature outside this range please contact our technical dept.

Carichi radiali

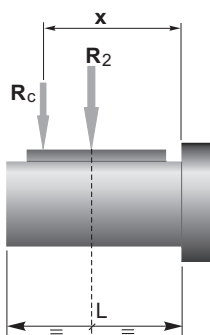
Radial loads



n ₂ [min ⁻¹]	R ₂ [N]				
	CMG 002	CMG 012	CMG 022	CMG 032	CMG 042
700	416	764	1529	1987	2379
600	437	805	1609	2092	2504
500	465	855	1710	2223	2661
400	501	921	1842	2395	2866
250	586	1077	2154	2801	3353
180	653	1323	2554	3321	3897
150	748	1406	2714	3529	4244
120	806	1631	3467	3801	4572
100	958	1842	3684	4507	5234
80	1032	1984	3969	5042	5991
60	1136	2184	4368	5549	6594
40	1300	2500	5000	6500	8000
10	1300	2500	5000	6500	8000

Quando il carico radiale risultante non è applicato sulla mezza-
ria dell'albero occorre calcolare quello effettivo con la seguente
formula:

*When the resulting radial load is not applied on the centre
line of the shaft it is necessary to calculate the effective load with the
following formula:*

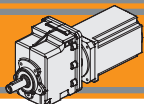


	CMG 002	CMG 012	CMG 022	CMG 032	CMG 042
a	73	104	117	132	150
b	53	84	92	102	115
R _{2MAX}	1300	2500	5000	6500	8000

$$R_c = \frac{R_2 \cdot a}{(b + x)} \leq R_{2MAX}$$

$$R \leq R_c$$

a, b = valori riportati nella tabella
a, b = values given in the table



Motoriduttori brushless CC ad ingranaggi cilindrici Brushless DC helical in-line gearmotors

CMG002 con motore brushless CC

CMG002 with brushless DC motor

CMG 002	BLS043.240													
	24V						36V							
	n _{2MIN} [rpm]			n _{2MAX} [rpm]			n _{1MAX} [rpm]	n _{2MIN} [rpm]			n _{2MAX} [rpm]		n _{1MAX} [rpm]	
M ₂ [Nm]	sf		M ₂ [Nm]	sf		M ₂ [Nm]		sf		M ₂ [Nm]	sf			
5.0	60	2.1	22.2	596	2.1	15.0	3000	80	2.1	22.2	795	2.1	13.3	4000
6.1	49	2.5	18.3	492	2.5	12.4		66	2.5	18.3	656	2.5	11.0	
7.5	40	3.1	14.9	401	3.1	10.1		53	3.1	14.9	534	3.1	8.9	
9.0	33	3.7	15.5	334	3.7	10.5		44	3.7	15.5	445	3.7	9.3	
10.2	30	4.2	13.7	295	4.2	9.3		39	4.2	13.7	394	4.2	8.2	
12.1	25	5.0	11.5	249	5.0	7.8		33	5.0	11.5	331	5.0	6.9	
13.4	22	5.5	14.6	224	5.5	9.9		30	5.5	14.6	299	5.5	8.7	
15.1	20	6.2	12.9	198	6.2	8.7		26	6.2	12.9	264	6.2	7.7	
18.2	17	7.5	10.7	165	7.5	7.3		22	7.5	10.7	220	7.5	6.4	
21.6	14	8.9	9.0	139	8.9	6.1		19	8.9	9.0	185	8.9	5.4	
23.5	13	9.7	8.3	128	10	5.6		17	9.7	8.3	170	9.7	5.0	
25.1	12	10	7.8	120	10	5.3		16	10	7.8	159	10	4.7	
27.1	11	11	7.2	111	11	4.9		15	11	7.2	148	11	4.3	
32.5	9.2	13	6.0	92	13	4.1		12	13	6.0	123	13	3.6	
42.0	7.1	17	4.6	71	17	3.1		9.5	17	4.6	95	17	2.8	
44.9	6.7	19	4.3	67	19	2.9		8.9	19	4.3	89	19	2.6	
48.9	6.1	20	4.0	61	20	2.7		8.2	20	4.0	82	20	2.4	
55.1	5.4	23	3.5	54	23	2.4		7.3	23	3.5	73	23	2.1	

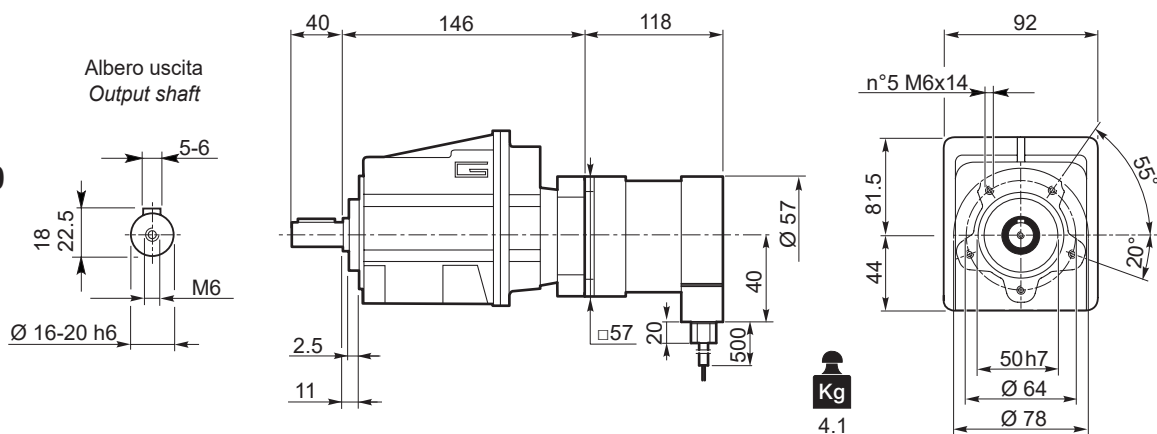
NOTA: per servizio continuo o altamente intermittente, contattare il servizio tecnico

NOTE: for continuous or highly intermittent duty, please contact our technical service

Tipo Type	Numero di poli Number of poles	Numero di fasi Number of phase	Tensione Rated voltage [V]	Numero di giri Rated speed [rpm]	Coppia nominale Rated torque [Nm]	Potenza nominale Rated power [W]
BLS043.240	4	3	36	4000	0.43	180
			24	3000		130
Tipo Type	Coppia massima Peak torque [Nm]	Corrente nominale Rated current [A]	Resistenza Resistance [Ω]	Induttanza Inductance [mH]	Corrente massima Peak current [A]	Peso Weight [kg]
BLS043.240	0.86	6.8	0.35	1	13.6	1.25

Azionamenti Drives → II 2

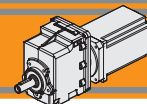
CMG002U..
+
BLS043.240



CMG002..H → BB19

CMG002..F → BB20

CMG002..H/F → BB21



CMG002 con motore brushless CC

CMG002 with brushless DC motor

CMG 002	BL070.240 / BL070.24B BL070.480 / BL070.48B						
	24V / 48V						
ir	n ₂ MIN [rpm]			n ₂ MAX [rpm]			n ₁ MAX [rpm]
		M ₂ [Nm]	sf		M ₂ [Nm]	sf	
5.0	60	3.4	13.6	596	3.4	9.2	3000
6.1	49	4.1	11.2	492	4.1	7.6	
7.5	40	5.0	9.1	401	5.0	6.2	
9.0	33	6.0	9.5	334	6.0	6.5	
10.2	30	6.8	8.4	295	6.8	5.7	
12.1	25	8.1	7.1	249	8.1	4.8	
13.4	22	9.0	8.9	224	9.0	6.1	
15.1	20	10	7.9	198	10	5.4	
18.2	17	12	6.6	165	12	4.5	
21.6	14	15	5.6	139	15	3.8	
23.5	13	16	5.1	128	16	3.5	
25.1	12	17	4.8	120	17	3.2	
27.1	11	18	4.4	111	18	3.0	
32.5	9.2	22	3.7	92	22	2.5	
42.0	7.1	28	2.8	71	28	1.9	
44.9	6.7	30	2.7	67	30	1.8	
48.9	6.1	33	2.5	61	33	1.7	
55.1	5.4	37	2.2	54	37	1.5	

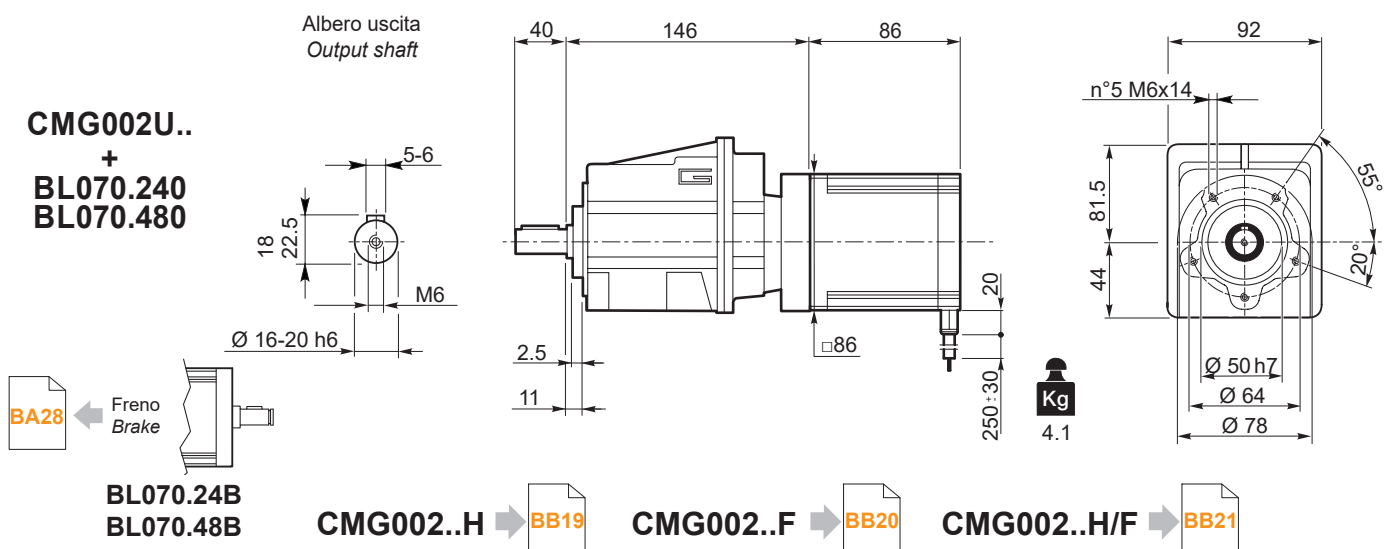
NOTA: per servizio continuo o altamente intermittente, contattare il servizio tecnico

NOTE: for continuous or highly intermittent duty, please contact our technical service

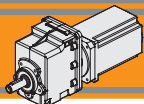
Tipo Type	Numero di poli Number of poles	Numero di fasi Number of phase	Tensione Rated voltage [V]	Numero di giri Rated speed [rpm]	Coppia nominale Rated torque [Nm]	Potenza nominale Rated power [W]
BL070.240 BL070.24B	8	3	24	3000	0.7	220
BL070.480 BL070.48B	8	3	48	3000	0.7	220

Tipo Type	Coppia massima Peak torque [Nm]	Corrente nominale Rated current [A]	Resistenza Resistance [Ω]	Induttanza Inductance [mH]	Corrente massima Peak current [A]	Peso Weight [kg]
BL070.240 BL070.24B	1.4	13	0.091	0.23	26	2.1
BL070.480 BL070.48B	1.4	6.5	0.34	1.0	13	2.1

Azionamenti
Drives → II 2



CMG IP 55



Motoriduttori brushless CC ad ingranaggi cilindrici Brushless DC helical in-line gearmotors

CMG002 con motore brushless CC

CMG002 with brushless DC motor

CMG 002	BL070.48.80													
	24V						48V							
	ir	n ₂ MIN [rpm]			n ₂ MAX [rpm]			n ₁ MAX [rpm]	n ₂ MIN [rpm]			n ₂ MAX [rpm]		
M ₂ [Nm]		sf		M ₂ [Nm]	sf		M ₂ [Nm]		sf		M ₂ [Nm]	sf		
5.0	50	3.4	13.6	497	3.4	9.2	2500	80	3.4	13.6	796	3.4	8.2	4000
6.1	41	4.1	11.2	410	4.1	7.6		66	4.1	11.2	656	4.1	6.7	
7.5	33	5.0	9.1	334	5.0	6.2		53	5.0	9.1	534	5.0	5.5	
9.0	28	6.0	9.5	278	6.0	6.5		45	6.0	9.5	445	6.0	5.7	
10.2	25	6.8	8.4	246	6.8	5.7		39	6.8	8.4	394	6.8	5.1	
12.1	21	8.1	7.1	207	8.1	4.8		33	8.1	7.1	331	8.1	4.3	
13.4	19	9.0	8.9	187	9.0	6.1		30	9.0	8.9	299	9.0	5.4	
15.1	17	10	7.9	165	10	5.4		26	10	7.9	264	10	4.7	
18.2	14	12	6.6	138	12	4.5		22	12	6.6	220	12	4.0	
21.6	12	15	5.6	116	15	3.8		19	15	5.6	185	15	3.3	
23.5	11	16	5.1	106	16	3.5		17	16	5.1	170	16	3.1	
25.1	10	17	4.8	100	17	3.2		16	17	4.8	159	17	2.9	
27.1	9.2	18	4.4	92	18	3.0		15	18	4.4	148	18	2.7	
32.5	7.7	22	3.7	77	22	2.5		12	22	3.7	123	22	2.2	
42.0	5.9	28	2.8	59	28	1.9		9.5	28	2.8	95	28	1.7	
44.9	5.6	30	2.7	56	30	1.8		8.9	30	2.7	89	30	1.6	
48.9	5.1	33	2.5	51	33	1.7		8.2	33	2.5	82	33	1.5	
55.1	4.5	37	2.2	45	37	1.5		7.3	37	2.2	73	37	1.3	

NOTA: per servizio continuo o altamente intermittente, contattare il servizio tecnico

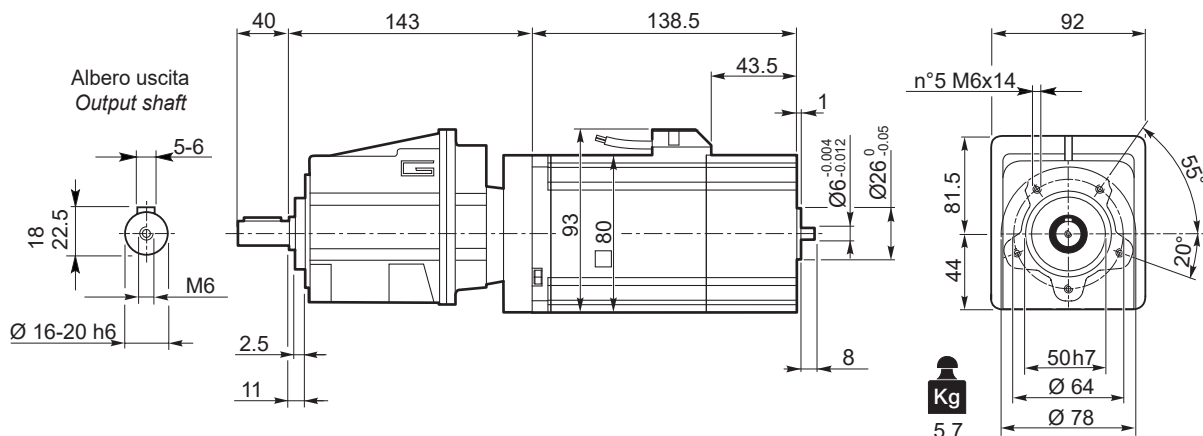
NOTE: for continuous or highly intermittent duty, please contact our technical service

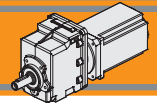
Tipo Type	Numero di poli Number of poles	Numero di fasi Number of phase	Tensione nominale Rated voltage [V]	Velocità nominale Rated speed [rpm]	Coppia nominale Rated torque [Nm]	Potenza nominale Rated power [W]	Coppia di picco Peak torque [Nm]
BL070.48.80	8	3	48	4350	0.7	320	1.4
			24	2500		185	

Tipo Type	Corrente nominale Rated current [A]	Corrente di picco Peak current [A]	Resistenza fase-fase Line to line resistance [Ω]	Induttanza fase-fase Line to line inductance [mH]	Costante di coppia Torque constant [Nm/A]	Costante FCEM Back EMF [V/kRPM]	Inerzia rotore Rotor inertia [gcm ²]	Peso Weight [kg]
BL070.48.80	12	36	0.072	0.304	0.1	6.15	1000	1.8



CMG002U..
+
BL070.48.80





CMG002 con motore brushless CC

CMG002 with brushless DC motor

CMG 002	BL140.480						
	48V						
ir	n _{2MIN} [rpm]			n _{2MAX} [rpm]			n _{1MAX} [rpm]
		M ₂ [Nm]	sf		M ₂ [Nm]	sf	
5.0	60	6.8	6.8	596	6.8	4.6	3000
6.1	49	8.2	5.6	492	8.2	3.8	
7.5	40	10	4.6	401	10	3.1	
9.0	33	12	4.8	334	12	3.2	
10.2	30	14	4.2	295	14	2.9	
12.1	25	16	3.5	249	16	2.4	
13.4	22	18	4.5	224	18	3.0	
15.1	20	20	4.0	198	20	2.7	
18.2	17	24	3.3	165	24	2.2	
21.6	14	29	2.8	139	29	1.9	
23.5	13	32	2.5	128	32	1.7	
25.1	12	34	2.4	120	34	1.6	
27.1	11	36	2.2	111	36	1.5	
32.5	9.2	44	1.8	92	44	1.3	
42.0	7.1	57	1.4	71	57	1.0	
44.9	6.7	60	1.3	67	60	0.9	
48.9	6.1	66	1.2	61	66	0.8	
55.1	5.4	74	1.1	54	74	0.7	

NOTA: per servizio continuo o altamente intermittente, contattare il servizio tecnico

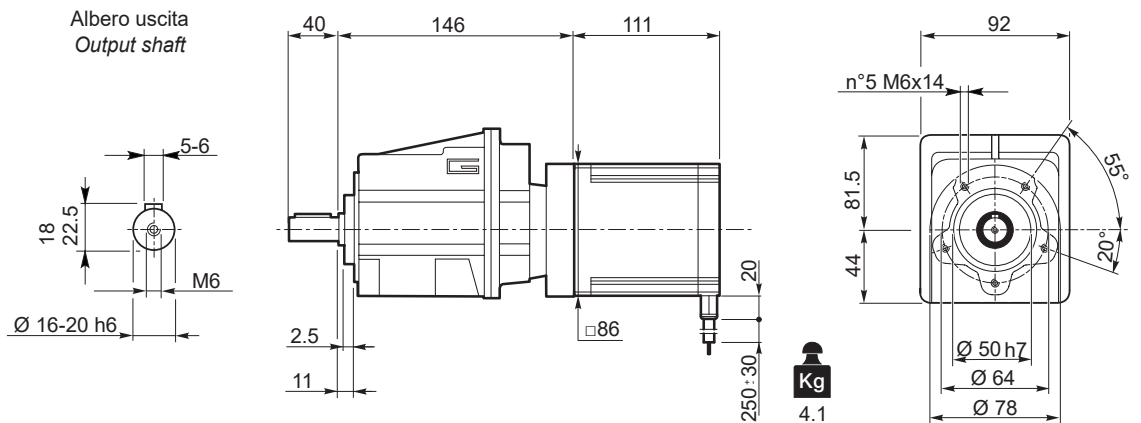
NOTE: for continuous or highly intermittent duty, please contact our technical service

Tipo Type	Numero di poli Number of poles	Numero di fasi Number of phase	Tensione Rated voltage [V]	Numero di giri Rated speed [rpm]	Coppia nominale Rated torque [Nm]	Potenza nominale Rated power [W]
BL140.480	8	3	48	3000	1.4	440
Tipo Type	Coppia massima Peak torque [Nm]	Corrente nominale Rated current [A]	Resistenza Resistance [Ω]	Induttanza Inductance [mH]	Corrente massima Peak current [A]	Peso Weight [kg]
BL140.480	2.8	13	0.16	0.5	26	3.15

Azionamenti
Drives



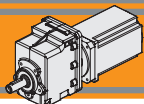
CMG002U..
+
BL140.480



CMG002..H → BB19

CMG002..F → BB20

CMG002..H/F → BB21



Motoriduttori brushless CC ad ingranaggi cilindrici

Brushless DC helical in-line gearmotors

CMG002 con motore brushless CC

CMG002 with brushless DC motor

CMG 002	BL200.48.95													
	24V						48V							
	ir	n _{2MIN} [rpm]		n _{2MAX} [rpm]			n _{1MAX} [rpm]	n _{2MIN} [rpm]		n _{2MAX} [rpm]			n _{1MAX} [rpm]	
M ₂ [Nm]		sf	M ₂ [Nm]	sf	M ₂ [Nm]	M ₂ [Nm]		sf	M ₂ [Nm]	sf	M ₂ [Nm]	sf		
5.0	30	9.7	4.8	298	9.7	4.1	1500	60	9.7	4.8	597	9.7	3.2	3000
6.1	25	12	3.9	246	12	3.4		49	12	3.9	492	12	2.7	
7.5	20	14	3.2	200	14	2.8		40	14	3.2	401	14	2.2	
9.0	17	17	3.3	167	17	2.9		33	17	3.3	334	17	2.3	
10.2	15	20	2.9	148	20	2.6		30	20	2.9	295	20	2.0	
12.1	12	23	2.5	124	23	2.2		25	23	2.5	249	23	1.7	
13.4	11	26	3.1	112	26	2.7		22	26	3.1	224	26	2.1	
15.1	9.9	29	2.8	99	29	2.4		20	29	2.8	198	29	1.9	
18.2	8.3	35	2.3	83	35	2.0		17	35	2.3	165	35	1.6	
21.6	7.0	41	1.9	70	41	1.7		14	41	1.9	139	41	1.3	
23.5	6.4	45	1.8	64	45	1.6		13	45	1.8	128	45	1.2	
25.1	6.0	48	1.7	60	48	1.5		12	48	1.7	120	48	1.1	
27.1	5.5	52	1.5	55	52	1.3		11	52	1.5	111	52	1.1	
32.5	4.6	62	1.3	46	62	1.1		9.2	62	1.3	92	62	0.9	
42.0	3.6	81	1.0	36	81	0.9		7.1	81	1.0	71	78	0.7	
44.9	3.3	86	0.9	33	86	0.8		6.7	86	0.9	67	78	0.7	
48.9	3.1	94	0.9	31	94	0.7		6.1	94	0.9	61	78	0.7	
55.1	2.7	106	0.8	27	106	0.7		5.4	106	0.8	54	78	0.7	

NOTA: per servizio continuo o altamente intermittente, contattare il servizio tecnico

NOTE: for continuous or highly intermittent duty, please contact our technical service

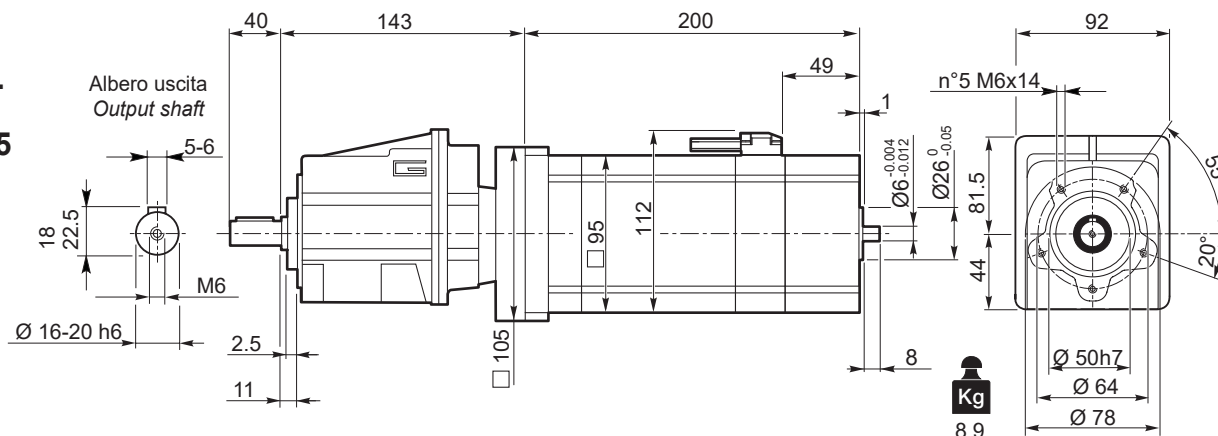
Attenzione: superamento della coppia nominale supportata dal riduttore per servizio S1. Contattare il ns. servizio tecnico
 Attention: rated torque withstood by gear reducer for service in S1 is exceeded. Please, contact our technical office.

Tipo Type	Numero di poli Number of poles	Numero di fasi Number of phase	Servizio Service	Tensione nominale Rated voltage [V]	Velocità nominale Rated speed [rpm]	Coppia nominale Rated torque [Nm]	Potenza nominale Rated power [W]	Coppia di picco Peak torque [Nm]
BL200.48.95	8	3	S1	48	3000	2.0	650	4.0
				24	1500		300	

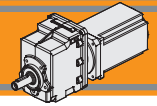
Tipo Type	Corrente nominale Rated current [A]	Corrente di picco Peak current [A]	Resistenza fase-fase Line to line resistance [Ω]	Induttanza fase-fase Line to line inductance [mH]	Costante di coppia Torque constant [Nm/A]	Costante FCEM BACK EMF [V/kRPM]	Inerzia rotore Rotor inertia [gcm ²]	Peso Weight [kg]
BL200.48.95	16.5	49.5	0.068 +/- 15%	0.25	0.091	6.7 +/- 10%	2820	6

Azionamenti Drives → II 2

CMG002U.. + BL200.48.95



Encoder → BA17 CMG002..H → BB19 CMG002..F → BB20 CMG002..H/F → BB21



CMG002 con motore brushless CC

CMG002 with brushless DC motor

CMG 002	BL210.480 / BL210.48E						
	48V						
ir	n _{2MIN} [rpm]			n _{2MAX} [rpm]			n _{1MAX} [rpm]
		M ₂ [Nm]	sf		M ₂ [Nm]	sf	
5.0	60	10	4.5	596	10	3.1	3000
6.1	49	12	3.7	492	12	2.5	
7.5	40	15	3.0	401	15	2.1	
9.0	33	18	3.2	334	18	2.2	
10.2	30	20	2.8	295	20	1.9	
12.1	25	24	2.4	249	24	1.6	
13.4	22	27	3.0	224	27	2.0	
15.1	20	30	2.6	198	30	1.8	
18.2	17	36	2.2	165	36	1.5	
21.6	14	43	1.9	139	43	1.3	
23.5	13	47	1.7	128	47	1.2	
25.1	12	51	1.6	120	51	1.1	
27.1	11	55	1.5	111	55	1.0	
32.5	9.2	65	1.2	92	65	0.8	
42.0	7.1	85	0.9	71	78	0.7	
44.9	6.7	90	0.9	67	78	0.7	
48.9	6.1	99	0.8	61	78	0.7	
55.1	5.4	110	0.7	54	78	0.7	

NOTA: per servizio continuo o altamente intermittente, contattare il servizio tecnico

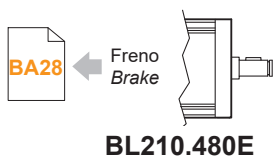
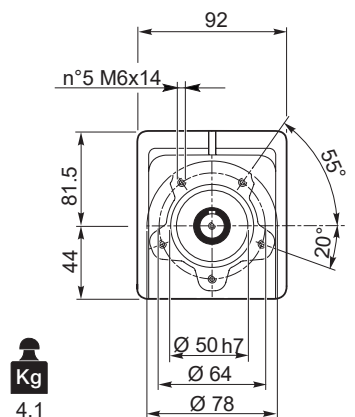
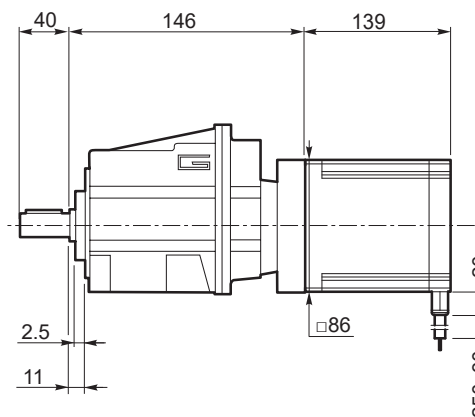
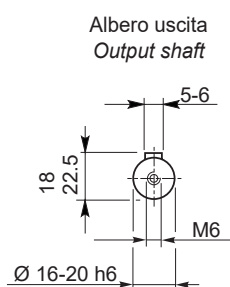
NOTE: for continuous or highly intermittent duty, please contact our technical service

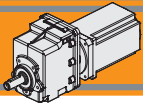
Attenzione: superamento della coppia nominale supportata dal riduttore per servizio S1. Contattare il ns. servizio tecnico
Attention: rated torque withstood by gear reducer for service in S1 is exceeded. Please, contact our technical office.

Tipo Type	Numero di poli Number of poles	Numero di fasi Number of phase	Tensione Rated voltage [V]	Numero di giri Rated speed [rpm]	Coppia nominale Rated torque [Nm]	Potenza nominale Rated power [W]
BL210.480 BL210.48E	8	3	48	3000	2.1	660
Tipo Type	Coppia massima Peak torque [Nm]	Corrente nominale Rated current [A]	Resistenza Resistance [Ω]	Induttanza Inductance [mH]	Corrente massima Peak current [A]	Peso Weight [kg]
BL210.480 BL210.48E	4.2	18.7	0.115	0.31	37	4.2



CMG002U..
+
BL210.480





Motoriduttori brushless CC ad ingranaggi cilindrici

Brushless DC helical in-line gearmotors

CMG012 con motore brushless CC

CMG012 with brushless DC motor

CMG 012	BL140.480						
	48V						
ir	n _{2MIN} [rpm]			n _{2MAX} [rpm]			n _{1MAX} [rpm]
	M ₂ [Nm]	sf		M ₂ [Nm]	sf		
3.82	79	5.1	13.4	786	5.1	9.1	3000
4.63	65	6.2	11.1	648	6.2	7.5	
5.69	53	7.6	9.0	527	7.6	6.1	
7.72	39	10.4	8.9	389	10.4	6.0	
9.17	33	12.3	7.5	327	12.3	5.1	
9.81	31	13.2	7.0	306	13.2	4.7	
11.50	26	15.5	7.4	261	15.5	5.0	
11.90	25	16	7.2	252	16	4.9	
13.80	22	19	7.4	217	19	5.0	
14.62	21	20	7.0	205	20	4.8	
17.86	17	24	5.8	168	24	3.9	
19.07	16	26	5.4	157	26	3.7	
19.83	15	27	5.2	151	27	3.5	
23.56	13	32	4.4	127	32	3.0	
29.56	10	40	3.5	102	40	2.4	
35.47	8.5	48	2.9	85	48	2.0	
45.89	6.5	62	2.2	65	62	1.5	
49.00	6.1	66	2.1	61	66	1.4	
53.33	5.6	72	1.9	56	72	1.3	
60.15	5.0	81	1.7	50	81	1.2	

NOTA: per servizio continuo o altamente intermittente, contattare il servizio tecnico

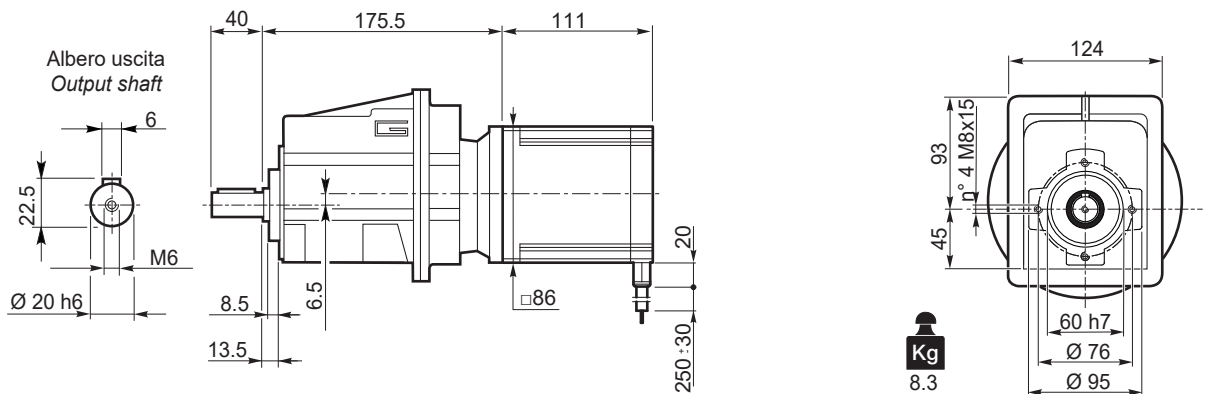
NOTE: for continuous or highly intermittent duty, please contact our technical service

Tipo Type	Numero di poli Number of poles	Numero di fasi Number of phase	Tensione Rated voltage [V]	Numero di giri Rated speed [rpm]	Coppia nominale Rated torque [Nm]	Potenza nominale Rated power [W]
BL140.480	8	3	48	3000	1.4	440
Tipo Type	Coppia massima Peak torque [Nm]	Corrente nominale Rated current [A]	Resistenza Resistance [Ω]	Induttanza Inductance [mH]	Corrente massima Peak current [A]	Peso Weight [kg]
BL140.480	2.8	13	0.16	0.5	26	3.15

Azionamenti
Drives



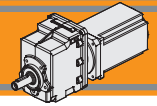
CMG012U..
+
BL140.480



CMG012..H → [BB19](#)

CMG012..F → [BB20](#)

CMG012..H/F → [BB21](#)



CMG012 con motore brushless CC

CMG012 with brushless DC motor

CMG 012	BL200.48.95													
	24V						48V							
	n _{2MIN} [rpm]			n _{2MAX} [rpm]			n _{1MAX} [rpm]	n _{2MIN} [rpm]			n _{2MAX} [rpm]		n _{1MAX} [rpm]	
M ₂ [Nm]	sf		M ₂ [Nm]	sf		M ₂ [Nm]		sf		M ₂ [Nm]	sf			
3.82	39	7.3	9.4	393	7.3	8.2	1500	79	7.3	9.4	786	7.3	6.4	3000
4.63	32	8.9	7.8	324	8.9	6.7		65	8.9	7.8	648	8.9	5.3	
5.69	26	11	6.3	264	11	5.5		53	11	6.3	527	11	4.3	
7.72	19	15	6.2	194	15	5.4		39	15	6.2	389	15	4.2	
9.17	16	18	5.2	164	18	4.5		33	18	5.2	327	18	3.5	
9.81	15	19	4.9	153	19	4.2		31	19	4.9	306	19	3.3	
11.50	13	22	5.2	130	22	4.5		26	22	5.2	261	22	3.5	
11.90	13	23	5.0	126	23	4.4		25	23	5.0	252	23	3.4	
13.80	11	26	5.2	109	26	4.5		22	26	5.2	217	26	3.5	
14.62	10	28	4.9	103	28	4.3		21	28	4.9	205	28	3.3	
17.86	8	34	4.0	84	34	3.5		17	34	4.0	168	34	2.7	
19.07	8	37	3.8	79	37	3.3		16	37	3.8	157	37	2.6	
19.83	7.6	38	3.6	76	38	3.2		15.1	38	3.6	151	38	2.5	
23.56	6.4	45	3.1	64	45	2.7		12.7	45	3.1	127	45	2.1	
29.56	5.1	57	2.4	51	57	2.1		10.2	57	2.4	102	57	1.6	
35.47	4.2	68	2.0	42	68	1.8		8.5	68	2.0	85	68	1.4	
45.89	3.3	88	1.6	33	88	1.4		6.5	88	1.6	65	88	1.1	
49.00	3.1	94	1.5	31	94	1.3		6.1	94	1.5	61	94	1.0	
53.33	2.8	102	1.3	28	102	1.2		5.6	102	1.3	56	102	0.9	
60.15	2.5	115	1.2	25	115	1.0		5.0	115	1.2	50	115	0.8	

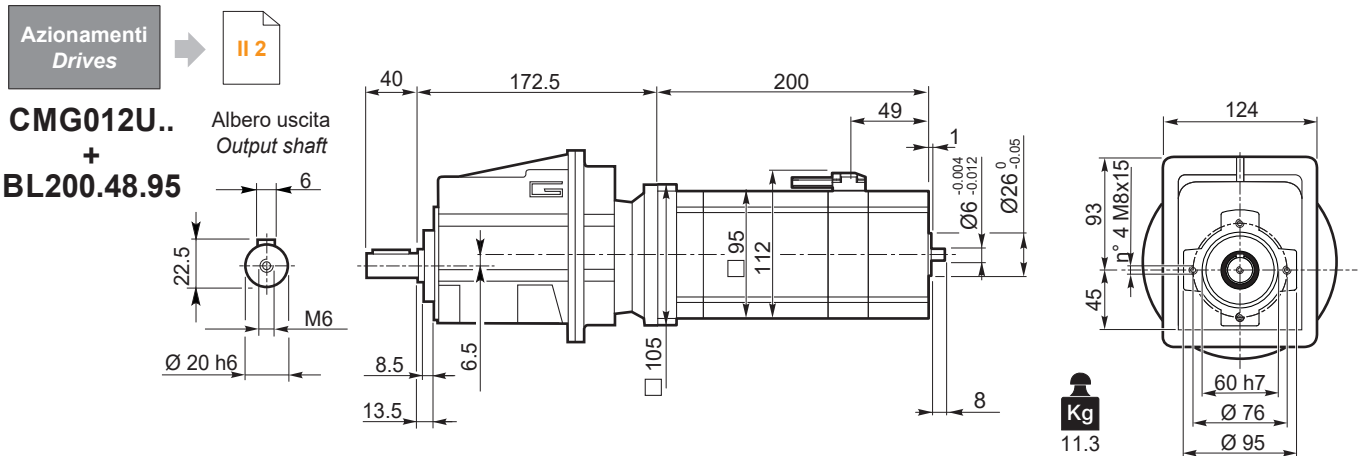
NOTA: per servizio continuo o altamente intermittente, contattare il servizio tecnico

NOTE: for continuous or highly intermittent duty, please contact our technical service

Attenzione: superamento della coppia nominale supportata dal riduttore per servizio S1. Contattare il ns. servizio tecnico
Attention: rated torque withstood by gear reducer for service in S1 is exceeded. Please, contact our technical office.

Tipo Type	Numero di poli Number of poles	Numero di fasi Number of phase	Servizio Service	Tensione nominale Rated voltage [V]	Velocità nominale Rated speed [rpm]	Coppia nominale Rated torque [Nm]	Potenza nominale Rated power [W]	Coppia di picco Peak torque [Nm]
BL200.48.95	8	3	S1	48	3000	2.0	650	4.0
				24	1500		300	

Tipo Type	Corrente nominale Rated current [A]	Corrente di picco Peak current [A]	Resistenza fase-fase Line to line resistance [Ω]	Induttanza fase-fase Line to line inductance [mH]	Costante di coppia Torque constant [Nm/A]	Costante FCEM Back EMF [V/kRPM]	Inerzia rotore Rotor inertia [gcm ²]	Peso Weight [kg]
BL200.48.95	16.5	49.5	0.068 +/- 15%	0.25	0.091	6.7 +/- 10%	2820	6



Azionamenti Drives

II 2

CMG012U.. + BL200.48.95

Albero uscita Output shaft

11.3 Kg

Encoder

BA21

CMG012..H

BB19

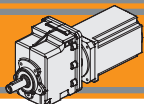
CMG012..F

BB20

CMG012..H/F

BB21

CMG IP 55



Motoriduttori brushless CC ad ingranaggi cilindrici Brushless DC helical in-line gearmotors

CMG012 con motore brushless CC

CMG012 with brushless DC motor

CMG 012	BL210.480 / BL210.48E						
	48V						
ir	n ₂ MIN [rpm]			n ₂ MAX [rpm]			n ₁ MAX [rpm]
	M ₂ [Nm]	sf		M ₂ [Nm]	sf		
3.82	79	7.7	9.0	786	7.7	6.1	3000
4.63	65	9.3	7.4	648	9.3	5.0	
5.69	53	11.5	6.0	527	11	4.1	
7.72	39	15.6	5.9	389	16	4.0	
9.17	33	18.5	5.0	327	18	3.4	
9.81	31	19.8	4.7	306	20	3.2	
11.50	26	23.2	5.0	261	23	3.4	
11.90	25	24	4.8	252	24	3.3	
13.80	22	28	5.0	217	28	3.4	
14.62	21	29	4.7	205	29	3.2	
17.86	17	36	3.8	168	36	2.6	
19.07	16	38	3.6	157	38	2.4	
19.83	15	40	3.5	151	40	2.3	
23.56	13	47	2.9	127	47	2.0	
29.56	10	60	2.3	102	60	1.6	
35.47	8.5	72	1.9	85	72	1.3	
45.89	6.5	93	1.5	65	93	1.0	
49.00	6.1	99	1.4	61	99	0.9	
53.33	5.6	108	1.3	56	108	0.9	
60.15	5.0	121	1.1	50	121	0.8	

NOTA: per servizio continuo o altamente intermittente, contattare il servizio tecnico

NOTE: for continuous or highly intermittent duty, please contact our technical service

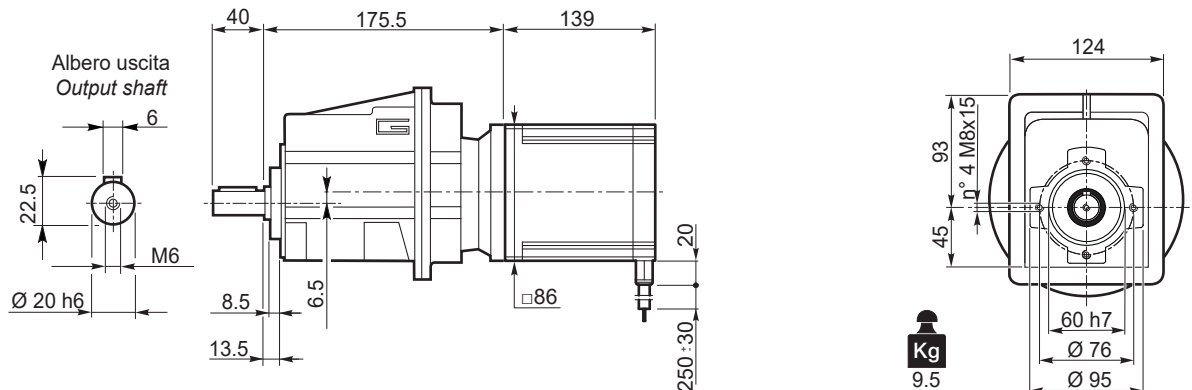
Attenzione: superamento della coppia nominale supportata dal riduttore per servizio S1. Contattare il ns. servizio tecnico
Attention: rated torque withstood by gear reducer for service in S1 is exceeded. Please, contact our technical office.

Tipo Type	Numero di poli Number of poles	Numero di fasi Number of phase	Tensione Rated voltage [V]	Numero di giri Rated speed [rpm]	Coppia nominale Rated torque [Nm]	Potenza nominale Rated power [W]
BL210.480 BL210.48E	8	3	48	3000	2.1	660
Tipo Type	Coppia massima Peak torque [Nm]	Corrente nominale Rated current [A]	Resistenza Resistance [Ω]	Induttanza Inductance [mH]	Corrente massima Peak current [A]	Peso Weight [kg]
BL210.480 BL210.48E	4.2	18.7	0.115	0.31	37	4.2

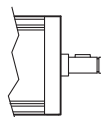
Azionamenti
Drives



CMG012U..
+
BL210.480



Freno
Brake



CMG012..H



CMG012..F

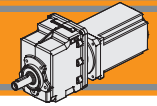


CMG012..H/F



B-B12 BL210.480E

0524A



CMG012 con motore brushless CC

CMG012 with brushless DC motor

CMG 012	BL400.48.120													
	24V						48V							
	ir	n _{2MIN} [rpm]			n _{2MAX} [rpm]			n _{1MAX} [rpm]	n _{2MIN} [rpm]			n _{2MAX} [rpm]		n _{1MAX} [rpm]
M ₂ [Nm]		sf		M ₂ [Nm]	sf		M ₂ [Nm]		sf		M ₂ [Nm]	sf		
3.82	37	13	5.4	367	13	4.7	1400	79	13	5.4	786	13	3.6	3000
4.63	30	16	4.4	302	16	3.9		65	16	4.4	648	16	3.0	
5.69	25	19	3.6	246	19	3.1		53	19	3.6	527	19	2.4	
7.72	18	26	3.5	181	26	3.1		39	26	3.5	389	26	2.4	
9.17	15	31	3.0	153	31	2.6		33	31	3.0	327	31	2.0	
9.81	14	33	2.8	143	33	2.4		31	33	2.8	306	33	1.9	
11.50	12	39	3.0	122	39	2.6		26	39	3.0	261	39	2.0	
11.90	12	40	2.9	118	40	2.5		25	40	2.9	252	40	2.0	
13.80	10	46	3.0	101	46	2.6		22	46	3.0	217	46	2.0	
14.62	9.6	49	2.8	96	49	2.4		21	49	2.8	205	49	1.9	
17.86	7.8	60	2.3	78	60	2.0		17	60	2.3	168	60	1.6	
19.07	7.3	64	2.2	73	64	1.9		16	64	2.2	157	64	1.5	
19.83	7.1	67	2.1	71	67	1.8		15	67	2.1	151	67	1.4	
23.56	5.9	79	1.7	59	79	1.5		13	79	1.7	127	79	1.2	
29.56	4.7	99	1.4	47	99	1.2		10	99	1.4	102	99	0.9	
35.47	3.9	119	1.2	39	119	1.0		8.5	119	1.2	85	119	0.8	
45.89	3.1	154	0.9	31	154	0.8		6.5	154	0.9	65	134	0.7	
49.00	2.9	165	0.8	29	165	0.7		6.1	165	0.8	61	134	0.7	
53.33	2.6	179	0.8	26	165	0.7		5.6	179	0.8	56	134	0.7	
60.15	2.3	197	0.7	23	165	0.7		5.0	197	0.7	50	134	0.7	

NOTA: per servizio continuo o altamente intermittente, contattare il servizio tecnico

NOTE: for continuous or highly intermittent duty, please contact our technical service

CMG013: disponibile nella versione a 3 stadi con rapporto di riduzione fino a 443,59

CMG013: 3 stage version available up to reduction ratio 443.59

Attenzione: superamento della coppia nominale supportata dal riduttore per servizio S1. Contattare il ns. servizio tecnico
Attention: rated torque withstood by gear reducer for service in S1 is exceeded. Please, contact our technical office.

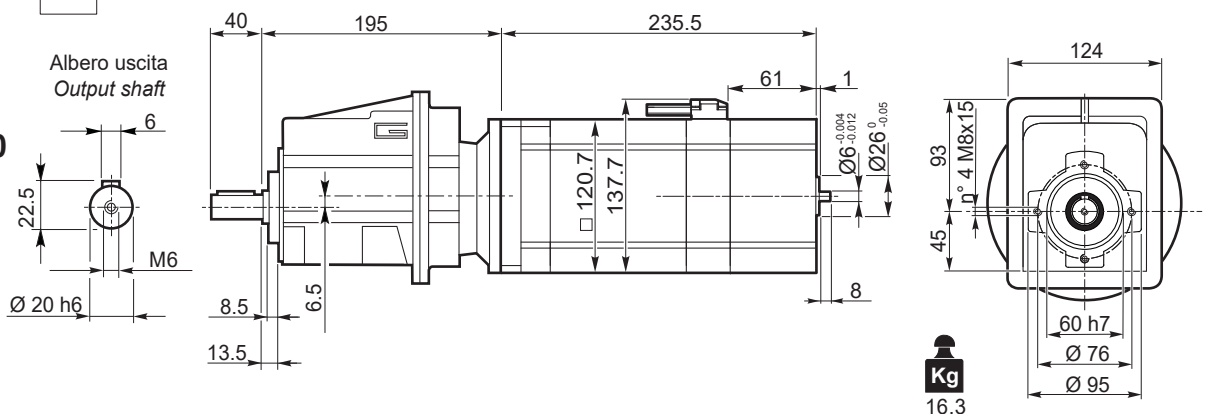
Tipo Type	Numero di poli Number of poles	Numero di fasi Number of phase	Servizio Service	Tensione nominale Rated voltage [V]	Velocità nominale Rated speed [rpm]	Coppia nominale Rated torque [Nm]	Potenza nominale Rated power [W]	Coppia di picco Peak torque [Nm]	Corrente nominale Rated current [A]	Corrente di picco Peak current [A]
BL400.48.120	8	3	S3	48	3000	4.2	1320	8.4	33	99
			S1			3.5	1100	7.0	28	84
			S3	24	1400	4.2	615	8.4	33	99
			S1			3.5	515	7.0	28	84

Tipo Type	Resistenza fase-fase Line to line resistance [Ω]	Induttanza fase-fase Line to line inductance [mH]	Costante di coppia Torque constant [Nm/A]	Costante FCEM Back EMF [V/kRPM]	Inerzia rotore Rotor inertia [gcm ²]	Peso Weight [kg]
BL400.48.120	0.064	0.31	0.120	12.6	21380	11

Azionamenti Drives

II 2

CMG012U..
+
BL400.48.120



Encoder

BA21

CMG012..H

BB19

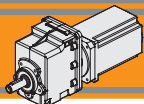
CMG012..F

BB20

CMG012..H/F

BB21

CMG IP 55



Motoriduttori brushless CC ad ingranaggi cilindrici

Brushless DC helical in-line gearmotors

CMG022 con motore brushless CC

CMG022 with brushless DC motor

CMG 022	BL200.48.95													
	24V						48V							
	n _{2MIN} [rpm]			n _{2MAX} [rpm]			n _{1MAX} [rpm]	n _{2MIN} [rpm]			n _{2MAX} [rpm]		n _{1MAX} [rpm]	
ir	M ₂ [Nm]	sf	M ₂ [Nm]	sf		M ₂ [Nm]		sf	M ₂ [Nm]	sf				
3.66	41	7.0	16.4	410	7.0	14.2	1500	82	7.0	16.4	821	7.0	11.1	3000
4.43	34	8.5	13.5	338	8.5	11.7		68	8.5	13.5	676	8.5	9.2	
5.45	28	10.5	11.0	275	10.5	9.6		55	10.5	11.0	551	10.5	7.5	
7.39	20	14.2	9.7	203	14.2	8.5		41	14.2	9.7	406	14.2	6.6	
8.78	17	16.8	8.2	171	16.8	7.1		34	16.8	8.2	342	16.8	5.6	
9.93	15	19.1	7.2	151	19.1	6.3		30	19.1	7.2	302	19.1	4.9	
11.01	14	21.1	10.9	136	21.1	9.5		27	21.1	10.9	272	21.1	7.4	
12.05	12	23	9.9	124	23	8.6		25	23	9.9	249	23	6.7	
13.21	11	25	7.3	114	25	6.3		23	25	7.3	227	25	4.9	
14.81	10	28	8.1	101	28	7.0		20	28	8.1	203	28	5.5	
17.10	9	33	4.6	88	33	4.0		18	33	4.6	175	33	3.1	
20.08	7	39	6.0	75	39	5.2		15	39	6.0	149	39	4.0	
23.85	6.3	46	5.0	63	46	4.4		12.6	46	5.0	126	46	3.4	
29.93	5.0	57	4.0	50	57	3.5		10.0	57	4.0	100	57	2.7	
35.91	4.2	69	3.3	42	69	2.9		8.4	69	3.3	84	69	2.3	
46.46	3.2	89	2.6	32	89	2.2		6.5	89	2.6	65	89	1.7	
49.61	3.0	95	2.4	30	95	2.1		6.0	95	2.4	60	95	1.6	
54.00	2.8	104	2.2	28	104	1.9		5.6	104	2.2	56	104	1.5	
60.90	2.5	117	2.0	25	117	1.7		4.9	117	2.0	49	117	1.3	

NOTA: per servizio continuo o altamente intermittente, contattare il servizio tecnico

NOTE: for continuous or highly intermittent duty, please contact our technical service

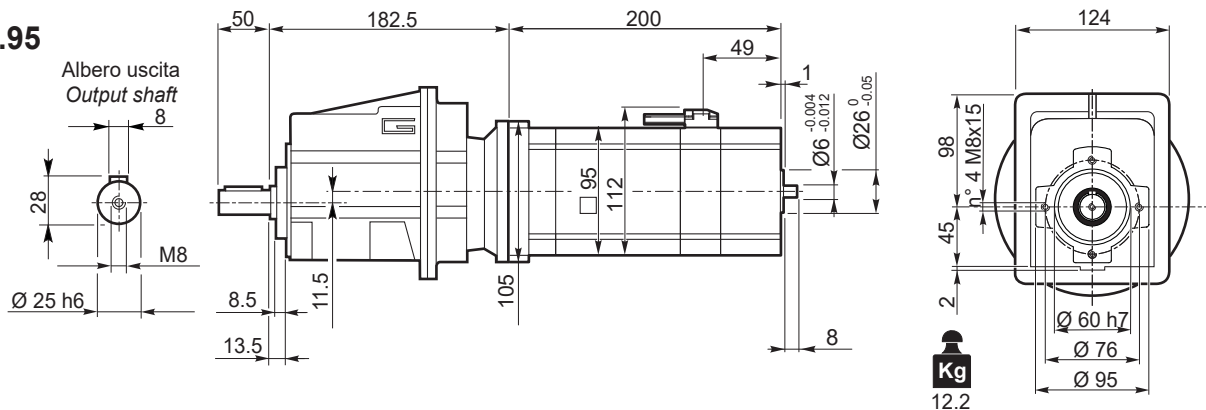
Tipo Type	Numero di poli Number of poles	Numero di fasi Number of phase	Servizio Service	Tensione nominale Rated voltage [V]	Velocità nominale Rated speed [rpm]	Coppia nominale Rated torque [Nm]	Potenza nominale Rated power [W]	Coppia di picco Peak torque [Nm]
BL200.48.95	8	3	S1	48	3000	2.0	650	4.0
				24	1500		300	

Tipo Type	Corrente nominale Rated current [A]	Corrente di picco Peak current [A]	Resistenza fase-fase Line to line resistance [Ω]	Induttanza fase-fase Line to line inductance [mH]	Costante di coppia Torque constant [Nm/A]	Costante FCEM Back EMF [V/kRPM]	Inerzia rotore Rotor inertia [gcm ²]	Peso Weight [kg]
BL200.48.95	16.5	49.5	0.068 +/- 15%	0.25	0.091	6.7 +/- 10%	2820	6

Azionamenti Drives



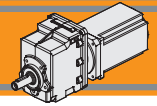
CMG022U..
+
BL200.48.95



CMG022..H → BB19

CMG022..F → BB20

CMG022..H/F → BB21



CMG022 con motore brushless CC

CMG022 with brushless DC motor

CMG 022	BL210.480 / BL210.48E						
	48V						
ir	n ₂ MIN [rpm]			n ₂ MAX [rpm]			n ₁ MAX [rpm]
	M ₂ [Nm]	sf		M ₂ [Nm]	sf		
3.66	82	7.4	15.6	821	7.4	10.6	3000
4.43	68	8.9	12.9	676	8.9	8.7	
5.45	55	11.0	10.5	551	11.0	7.1	
7.39	41	14.9	9.3	406	14.9	6.3	
8.78	34	17.7	7.8	342	17.7	5.3	
9.93	30	20.0	6.9	302	20.0	4.7	
11.01	27	22.2	10.4	272	22.2	7.0	
12.05	25	24	9.5	249	24	6.4	
13.21	23	27	6.9	227	27	4.7	
14.81	20	30	7.7	203	30	5.2	
17.10	18	34	4.3	175	34	2.9	
20.08	15	40	5.7	149	40	3.9	
23.85	12.6	48	4.8	126	48	3.2	
29.93	10.0	60	3.8	100	60	2.6	
35.91	8.4	72	3.2	84	72	2.2	
46.46	6.5	94	2.5	65	94	1.7	
49.61	6.0	100	2.3	60	100	1.6	
54.00	5.6	109	2.1	56	109	1.4	
60.90	4.9	123	1.9	49	123	1.3	

NOTA: per servizio continuo o altamente intermittente, contattare il servizio tecnico

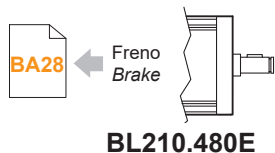
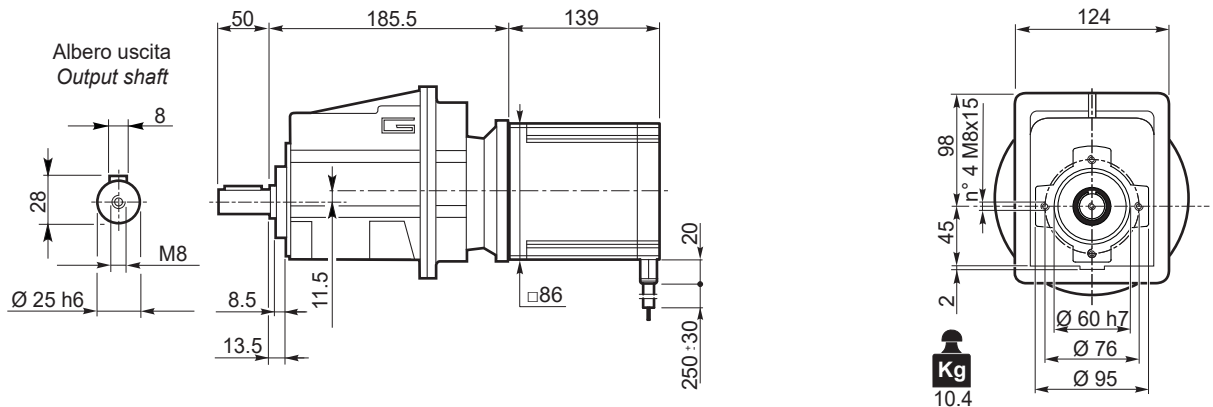
NOTE: for continuous or highly intermittent duty, please contact our technical service

Tipo Type	Numero di poli Number of poles	Numero di fasi Number of phase	Tensione Rated voltage [V]	Numero di giri Rated speed [rpm]	Coppia nominale Rated torque [Nm]	Potenza nominale Rated power [W]
BL210.480 BL210.48E	8	3	48	3000	2.1	660
Tipo Type	Coppia massima Peak torque [Nm]	Corrente nominale Rated current [A]	Resistenza Resistance [Ω]	Induttanza Inductance [mH]	Corrente massima Peak current [A]	Peso Weight [kg]
BL210.480 BL210.48E	4.2	18.7	0.115	0.31	37	4.2

Azionamenti
Drives



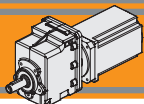
CMG022U..
+
BL210.480



CMG022..H → BB19

CMG022..F → BB20

CMG022..H/F → BB21



Motoriduttori brushless CC ad ingranaggi cilindrici Brushless DC helical in-line gearmotors

CMG022 con motore brushless CC

CMG022 with brushless DC motor

CMG 022	BL400.48.120													
	24V						48V							
	ir	n _{2MIN} [rpm]			n _{2MAX} [rpm]			n _{1MAX} [rpm]	n _{2MIN} [rpm]			n _{2MAX} [rpm]		
M ₂ [Nm]		sf		M ₂ [Nm]	sf		M ₂ [Nm]		sf		M ₂ [Nm]	sf		
3.66	38	12	9.4	383	12	8.1	1400	82	12	9.4	821	12	6.4	3000
4.43	32	15	7.7	316	15	6.7		68	15	7.7	676	15	5.2	
5.45	26	18	6.3	257	18	5.5		55	18	6.3	551	18	4.3	
7.39	19	25	5.6	189	25	4.8		41	25	5.6	406	25	3.8	
8.78	16	29	4.7	160	29	4.1		34	29	4.7	342	29	3.2	
9.93	14	33	4.1	141	33	3.6		30	33	4.1	302	33	2.8	
11.01	13	37	6.2	127	37	5.4		27	37	6.2	272	37	4.2	
12.05	12	40	5.7	116	40	4.9		25	40	5.7	249	40	3.9	
13.21	11	44	4.1	106	44	3.6		23	44	4.1	227	44	2.8	
14.81	9.5	50	4.6	95	50	4.0		20	50	4.6	203	50	3.1	
17.10	8.2	57	2.6	82	57	2.3		18	57	2.6	175	57	1.8	
20.08	7.0	67	3.4	70	67	3.0		15	67	3.4	149	67	2.3	
23.85	5.9	80	2.9	59	80	2.5		13	80	2.9	126	80	1.9	
29.93	4.7	101	2.3	47	101	2.0		10	101	2.3	100	101	1.6	
35.91	3.9	121	1.9	39	121	1.7		8.4	121	1.9	84	121	1.3	
46.46	3.0	156	1.5	30	156	1.3		6.5	156	1.5	65	156	1.0	
49.61	2.8	167	1.4	28	167	1.2		6.0	167	1.4	60	167	0.9	
54.00	2.6	181	1.3	26	181	1.1		5.6	181	1.3	56	181	0.9	
60.90	2.3	205	1.1	23	205	1.0		4.9	205	1.1	49	205	0.8	

NOTA: per servizio continuo o altamente intermittente, contattare il servizio tecnico

NOTE: for continuous or highly intermittent duty, please contact our technical service

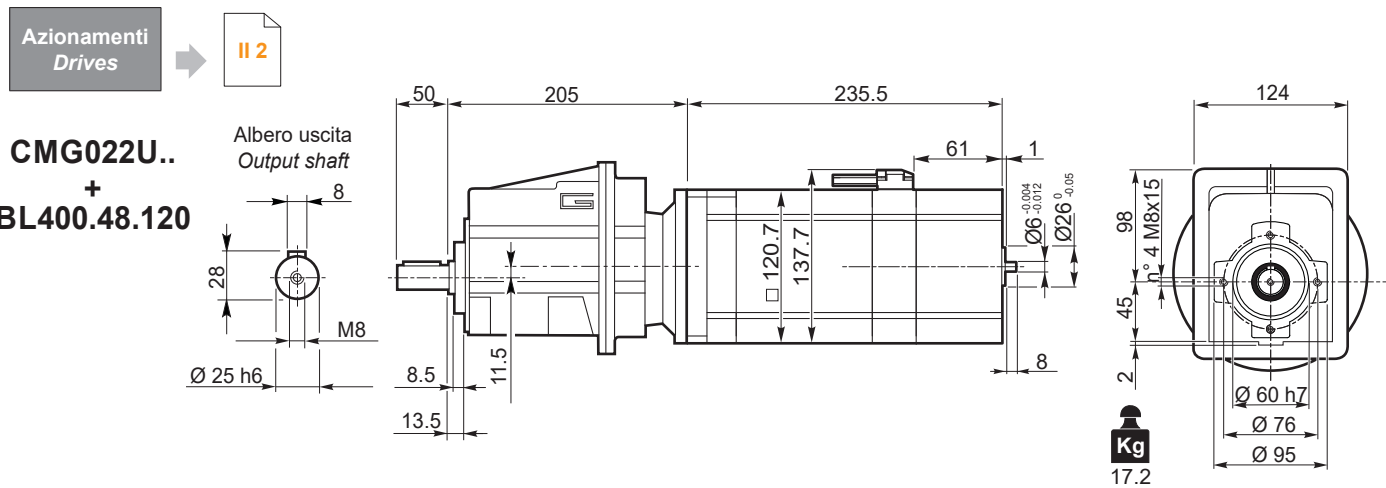
CMG023: disponibile nella versione a 3 stadi con rapporto di riduzione fino a 449.14

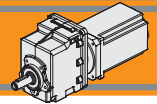
CMG023: 3 stage version available up to reduction ratio 449.14

Attenzione: superamento della coppia nominale supportata dal riduttore per servizio S1. Contattare il ns. servizio tecnico
Attention: rated torque withstood by gear reducer for service in S1 is exceeded. Please, contact our technical office.

Tipo Type	Numero di poli Number of poles	Numero di fasi Number of phase	Servizio Service	Tensione nominale Rated voltage [V]	Velocità nominale Rated speed [rpm]	Coppia nominale Rated torque [Nm]	Potenza nominale Rated power [W]	Coppia di picco Peak torque [Nm]	Corrente nominale Rated current [A]	Corrente di picco Peak current [A]
BL400.48.120	8	3	S3	48	3000	4.2	1320	8.4	33	99
			S1			3.5	1100	7.0	28	84
			S3	24	1400	4.2	615	8.4	33	99
			S1			3.5	515	7.0	28	84

Tipo Type	Resistenza fase-fase Line to line resistance [Ω]	Induttanza fase-fase Line to line inductance [mH]	Costante di coppia Torque constant [Nm/A]	Costante FCEM Back EMF [V/kRPM]	Inerzia rotore Rotor inertia [gcm ²]	Peso Weight [kg]
BL400.48.120	0.064	0.31	0.120	12.6	21380	11





CMG032 con motore brushless CC

CMG032 with brushless DC motor

CMG 032	BL400.48.120													
	24V						48V							
	ir	n _{2MIN} [rpm]			n _{2MAX} [rpm]			n _{1MAX} [rpm]	n _{2MIN} [rpm]			n _{2MAX} [rpm]		n _{1MAX} [rpm]
M ₂ [Nm]		sf		M ₂ [Nm]	sf		M ₂ [Nm]		sf		M ₂ [Nm]	sf		
3.74	37	13	13.7	374	13	11.9	1400	80	13	13.7	802	13	9.3	3000
4.50	31	15	11.4	311	15	9.9		67	15	11.4	666	15	7.7	
5.48	26	18	9.4	255	18	8.1		55	18	9.4	547	18	6.4	
6.31	22	21	9.8	222	21	8.5		48	21	9.8	476	21	6.6	
7.93	18	27	7.8	177	27	6.8		38	27	7.8	378	27	5.3	
9.08	15	31	6.8	154	31	5.9		33	31	6.8	330	31	4.6	
10.93	13	37	5.6	128	37	4.9		27	37	5.6	275	37	3.8	
12.60	11.1	42	6.8	111	42	5.9		24	42	6.8	238	42	4.6	
13.30	10.5	45	6.4	105	45	5.6		23	45	6.4	226	45	4.4	
15.30	9.2	51	6.3	92	51	5.4		20	51	6.3	196	51	4.2	
18.21	7.7	61	4.5	77	61	3.9		16.5	61	4.5	165	61	3.1	
19.24	7.3	65	5.0	73	65	4.3		15.6	65	5.0	156	65	3.4	
21.15	6.6	71	3.9	66	71	3.4		14	71	3.9	142	71	2.6	
24.99	5.6	84	4.1	56	84	3.6		12	84	4.1	120	84	2.8	
30.57	4.6	103	3.4	46	103	2.9		9.8	103	3.4	98	103	2.3	
34.20	4.1	115	3.0	41	115	2.6		8.8	115	3.0	88	115	2.0	
38.63	3.6	130	2.7	36	130	2.3		7.8	130	2.7	78	130	1.8	
44.18	3.2	148	2.3	32	148	2.0		6.8	148	2.3	68	148	1.6	
51.30	2.7	172	2.0	27	172	1.7		5.8	172	2.0	58	172	1.4	
60.80	2.3	204	1.7	23	204	1.5		4.9	204	1.7	49	204	1.1	

NOTA: per servizio continuo o altamente intermittente, contattare il servizio tecnico

NOTE: for continuous or highly intermittent duty, please contact our technical service

CMG033: disponibile nella versione a 3 stadi con rapporto di riduzione fino a 427.03

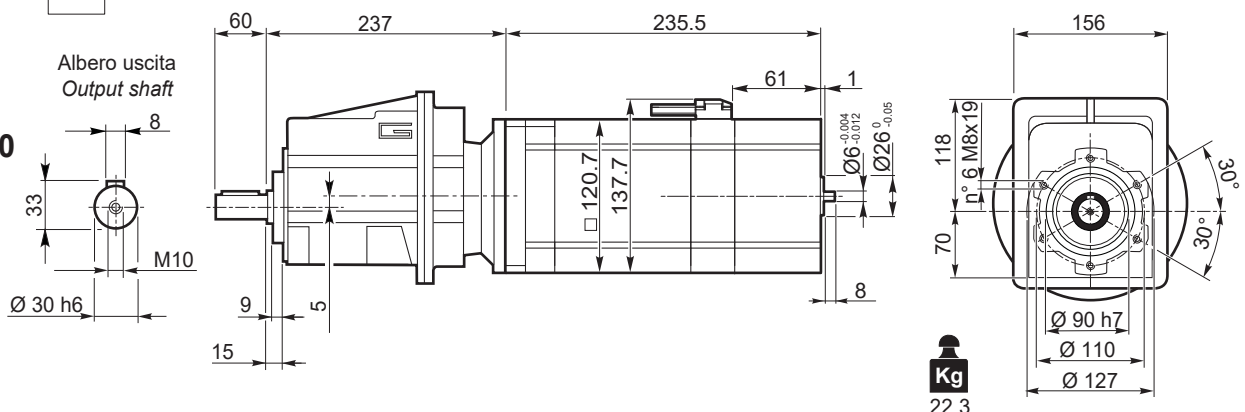
CMG033: 3 stage version available up to reduction ratio 427.03

Tipo Type	Numero di poli Number of poles	Numero di fasi Number of phase	Servizio Service	Tensione nominale Rated voltage [V]	Velocità nominale Rated speed [rpm]	Coppia nominale Rated torque [Nm]	Potenza nominale Rated power [W]	Coppia di picco Peak torque [Nm]	Corrente nominale Rated current [A]	Corrente di picco Peak current [A]
BL400.48.120	8	3	S3	48	3000	4.2	1320	8.4	33	99
			S1			3.5	1100	7.0	28	84
			S3	24	1400	4.2	615	8.4	33	99
			S1			3.5	515	7.0	28	84
Tipo Type	Resistenza fase-fase Line to line resistance [Ω]	Induttanza fase-fase Line to line inductance [mH]	Costante di coppia Torque constant [Nm/A]	Costante FCEM Back EMF [V/kRPM]	Inerzia rotore Rotor inertia [gcm ²]	Peso Weight [kg]				
BL400.48.120	0.064	0.31	0.120	12.6	21380	11				

Azionamenti Drives

II 2

CMG032U..
+
BL400.48.120



Encoder

BA21

CMG032..H

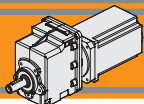
BB19

CMG032..F

BB20

CMG032..H/F

BB21



Motoriduttori brushless CC ad ingranaggi cilindrici

Brushless DC helical in-line gearmotors

CMG042 con motore brushless CC

CMG042 with brushless DC motor

CMG 042	BL400.48.120													
	24V						48V							
	ir	n ₂ MIN [rpm]			n ₂ MAX [rpm]			n ₁ MAX [rpm]	n ₂ MIN [rpm]			n ₂ MAX [rpm]		
M ₂ [Nm]		sf		M ₂ [Nm]	sf		M ₂ [Nm]		sf		M ₂ [Nm]	sf		
3.74	37	13	21.0	374	13	18.3	1400	80	13	21.0	802	13	14.3	3000
4.50	31	15	17.5	311	15	15.2		67	15	17.5	666	15	11.9	
5.48	26	18	14.4	255	18	12.5		55	18	14.4	547	18	9.7	
6.31	22	21	14.1	222	21	12.3		48	21	14.1	476	21	9.6	
7.93	18	27	11.2	177	27	9.8		38	27	11.2	378	27	7.6	
9.08	15	31	10.6	154	31	9.2		33	31	10.6	330	31	7.2	
10.93	13	37	8.8	128	37	7.6		27	37	8.8	275	37	5.9	
12.60	11.1	42	9.5	111	42	8.3		24	42	9.5	238	42	6.4	
13.30	10.5	45	9.0	105	45	7.8		23	45	9.0	226	45	6.1	
15.30	9.2	51	9.4	92	51	8.2		20	51	9.4	196	51	6.4	
19.24	7.3	65	7.5	73	65	6.5		15.6	65	7.5	156	65	5.1	
24.99	5.6	84	6.8	56	84	6.0		12.0	84	6.8	120	84	4.6	
30.57	4.6	103	5.6	46	103	4.9		10	103	5.6	98	103	3.8	
34.20	4.1	115	5.0	41	115	4.4		9	115	5.0	88	115	3.4	
38.63	3.6	130	4.4	36	130	3.9		7.8	130	4.4	78	130	3.0	
44.18	3.2	148	3.9	32	148	3.4		6.8	148	3.9	68	148	2.6	
51.30	2.7	172	3.3	27	172	2.9		5.8	172	3.3	58	172	2.3	
60.80	2.3	204	2.7	23	204	2.3		4.9	204	2.7	49	204	1.8	

NOTA: per servizio continuo o altamente intermittente, contattare il servizio tecnico

NOTE: for continuous or highly intermittent duty, please contact our technical service

CMG043: disponibile nella versione a 3 stadi con rapporto di riduzione fino a 427.03

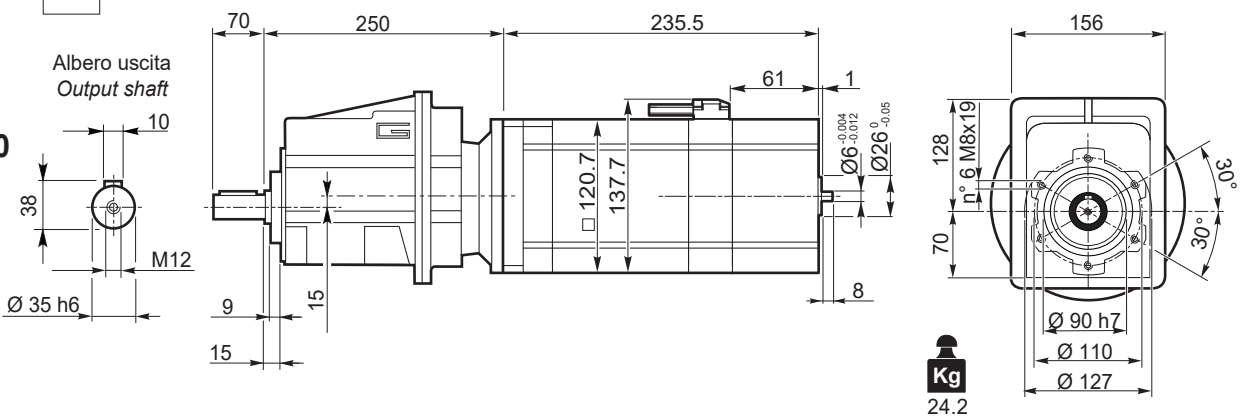
CMG043: 3 stage version available up to reduction ratio 427.03

Tipo Type	Numero di poli Number of poles	Numero di fasi Number of phase	Servizio Service	Tensione nominale Rated voltage [V]	Velocità nominale Rated speed [rpm]	Coppia nominale Rated torque [Nm]	Potenza nominale Rated power [W]	Coppia di picco Peak torque [Nm]	Corrente nominale Rated current [A]	Corrente di picco Peak current [A]
BL400.48.120	8	3	S3	48	3000	4.2	1320	8.4	33	99
			S1			3.5	1100	7.0	28	84
			S3	24	1400	4.2	615	8.4	33	99
			S1			3.5	515	7.0	28	84
Tipo Type	Resistenza fase-fase Line to line resistance [Ω]	Induttanza fase-fase Line to line inductance [mH]	Costante di coppia Torque constant [Nm/A]	Costante FCEM Back EMF [V/kRPM]	Inerzia rotore Rotor inertia [gcm ²]	Peso Weight [kg]				
BL400.48.120	0.064	0.31	0.120	12.6	21380	11				

Azionamenti Drives

II 2

CMG042U.. + BL400.48.120



Encoder

BA21

CMG032..H

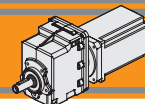
BB19

CMG032..F

BB20

CMG032..H/F

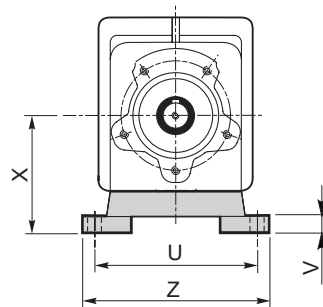
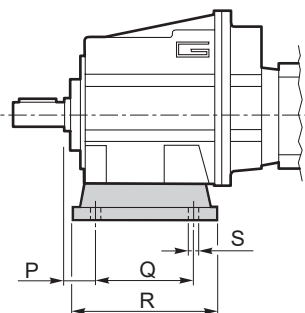
BB21



CMG..2 con motore brushless CC

CMG..2 with brushless DC motor

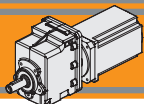
CMG002..H
CMG012..H
CMG022..H
CMG032..H
CMG042..H



Versione H / H Version										
CMG	P	Q	R	S	U	V	X	Z	Piede / Foot	
									Tipo / Type	Peso / Weight [kg]
002	18	60	80	9	100	10	60	120	H60	0.2
	18	80	104	9	110 - 120	10	75	145	H75	0.3
	18	50 - 87	110	9	110	10	85	135	H85	0.4
012	20	85	108	9	115	12	65	139	H65	0.7
	18	80	118	9	110	12	75	140	H75	1.0
	25	85	120	9	120	12	80	140	H80	1.1
	18	50 - 87	118	9	110	12	85	130	H85	1.2
	25	130	154	9	110	12	90	135	H90	1.5
	18	60 - 107.5	135	11	130	12	100	155	H100	1.7
022	20	85	108	9	115	12	65	139	H65	0.7
	18	80	118	9	110	12	75	140	H75	1.0
	25	85	120	9	120	12	80	140	H80	1.1
	18	50 - 87	118	9	110	12	85	130	H85	1.2
	25	130	154	9	110	12	90	135	H90	1.5
	18	60 - 107.5	135	11	130	12	100	155	H100	1.7
032	30	105	136	14	160	14	95	194	H95	1.5
	30	100	150	11	150	14	110	185	H110	1.9
	18	70			160					
	30	165	195	14	135	14	115	170	H115	2.2
	35	110	160	14	170	14	120	210	H120	2.6
042	30	105	136	14	160	14	95	194	H95	1.5
	30	100	150	11	150	14	110	185	H110	1.9
	18	70			160					
	30	165	195	14	135	14	115	170	H115	2.2
	35	110	160	14	170	14	120	210	H120	2.6

Preferenziale / Preferred

IP 55
CMG



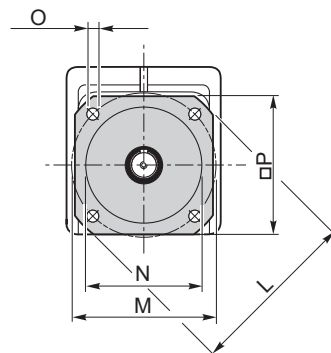
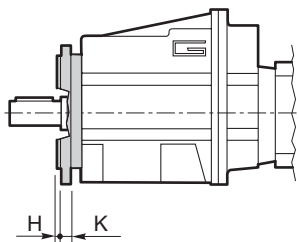
Motoriduttori brushless CC ad ingranaggi cilindrici

Brushless DC helical in-line gearmotors

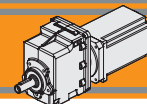
CMG..2 con motore brushless CC

CMG..2 with brushless DC motor

CMG002..F
 CMG012..F
 CMG022..F
 CMG032..F
 CMG042..F



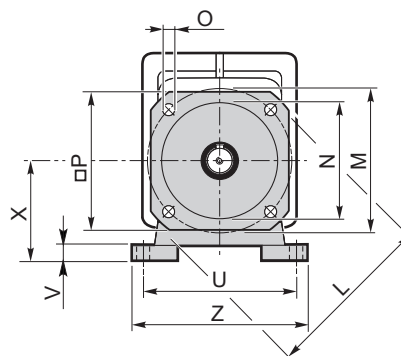
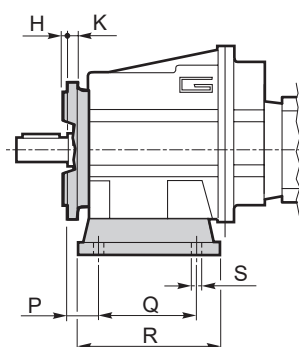
Versione F / F Version									
CMG	H	K	L	M	N f7	O	P	Flangia / Flange	
								Tipo / Type	Peso / Weight [kg]
002	3.5	7	105	85	70	6.5	90	F105	0.1
	3.5	8	120	100	80	7	100	F120	0.2
	3.5	8	140	115	95	9	115	F140	0.2
012	3	9	120	100	80	9	106	F120	0.5
	3.5	9	140	115	95	9	115	F140	0.8
	3.5	9	160	130	110	9	126	F160	1.1
	3.5	11	200	165	130	11	165	F200	1.8
022	3	9	120	100	80	9	106	F120	0.5
	3.5	9	140	115	95	9	115	F140	0.8
	3.5	9	160	130	110	9	126	F160	1.1
	3.5	11	200	165	130	11	165	F200	1.8
032	3.5	11	160	130	110	9	140	F160	1.0
	3.5	11	200	165	130	11	165	F200	1.8
	4	13	250	215	180	14	215	F250	2.9
042	3.5	11	160	130	110	9	140	F160	1.0
	3.5	11	200	165	130	11	165	F200	1.8
	4	13	250	215	180	14	215	F250	2.9



CMG..2 con motore brushless CC

CMG..2 with brushless DC motor

CMG002..H/F
CMG012..H/F
CMG022..H/F
CMG032..H/F
CMG042..H/F

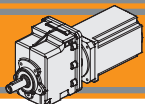


Versione H / H Version										Combinazioni possibili H/F Possible combinations H/F							
CMG	P	Q	R	S	U	V	X	Z	Piede / Foot		F105	F120	F140	F160	F200	F250	F300
									Tipo Type	Peso / Weight [kg]							
002	18	60	80	9	100	10	60	120	H60	0.2	•	•	•				
	18	80	104	9	110 - 120	10	75	145	H75	0.3	•	•	•				
	18	50 - 87	110	9	110	10	85	135	H85	0.4	•	•	•				
012	20	85	108	9	115	12	65	139	H65	0.7		•	•				
	18	80	118	9	110	12	75	140	H75	1.0		•	•	•			
	25	85	120	9	120	12	80	140	H80	1.1		•	•	•			
	18	50 - 87	118	9	110	12	85	130	H85	1.2		•	•	•			
	25	130	154	9	110	12	90	135	H90	1.5		•	•	•	•		
	18	60 - 107.5	135	11	130	12	100	155	H100	1.7		•	•	•	•		
022	20	85	108	9	115	12	65	139	H65	0.7		•	•				
	18	80	118	9	110	12	75	140	H75	1.0		•	•	•			
	25	85	120	9	120	12	80	140	H80	1.1		•	•	•			
	18	50 - 87	118	9	110	12	85	130	H85	1.2		•	•	•			
	25	130	154	9	110	12	90	135	H90	1.5		•	•	•	•		
	18	60 - 107.5	135	11	130	12	100	155	H100	1.7		•	•	•	•		
032	30	105	136	14	160	14	95	194	H95	1.5				•	•		
	30	100	150	11	150	14	110	185	H110	1.9				•	•		
	18	70			160												
	30	165	195	14	135	14	115	170	H115	2.2			•	•	•		
	35	110	160	14	170	14	120	210	H120	2.6			•	•	•		
042	30	105	136	14	160	14	95	194	H95	1.5				•	•		
	30	100	150	11	150	14	110	185	H110	1.9				•	•		
	18	70			160												
	30	165	195	14	135	14	115	170	H115	2.2			•	•	•		
	35	110	160	14	170	14	120	210	H120	2.6			•	•	•		

Preferenziale / Preferred

• Combinazioni possibili H/F / Possible combinations H/F

IP 55
CMG

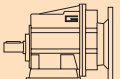



Motoriduttori brushless CC ad ingranaggi cilindrici

Brushless DC helical in-line gearmotors

Dati tecnici

Technical data

	n_2 [min ⁻¹]	Mn_2 [Nm]	Pn_1 [kW]	i
-----------------------------------------------------------------------------------	-------------------------------	----------------	----------------	-----

	n_2 [min ⁻¹]	Mn_2 [Nm]	Pn_1 [kW]	i
-----------------------------------------------------------------------------------	-------------------------------	----------------	----------------	-----

CMG 002

$n_1 = 1400$ rpm

279	40	1.2	5.03
230	40	1.0	6.10
187	40	0.82	7.49
156	50	0.85	8.99
138	50	0.75	10.16
116	50	0.63	12.07
105	70	0.80	13.40
92	70	0.71	15.14
77	70	0.59	18.17
65	70	0.50	21.58
60	70	0.45	23.51
56	70	0.43	25.10
52	70	0.39	27.08
43	70	0.33	32.49
33	70	0.25	42.04
31	70	0.24	44.89
29	70	0.22	48.86
25	70	0.19	55.10

CMG 002

$n_1 = 3000$ rpm

597	31	2.0	5.03
492	31	1.7	6.10
401	31	1.4	7.49
334	39	1.4	8.99
295	39	1.3	10.16
249	39	1.1	12.07
224	55	1.3	13.40
198	55	1.2	15.14
165	55	0.98	18.17
139	55	0.83	21.58
128	55	0.76	23.51
120	55	0.71	25.10
111	55	0.66	27.08
92	55	0.55	32.49
71	55	0.43	42.04
67	55	0.40	44.89
61	55	0.37	48.86
54	55	0.32	55.10

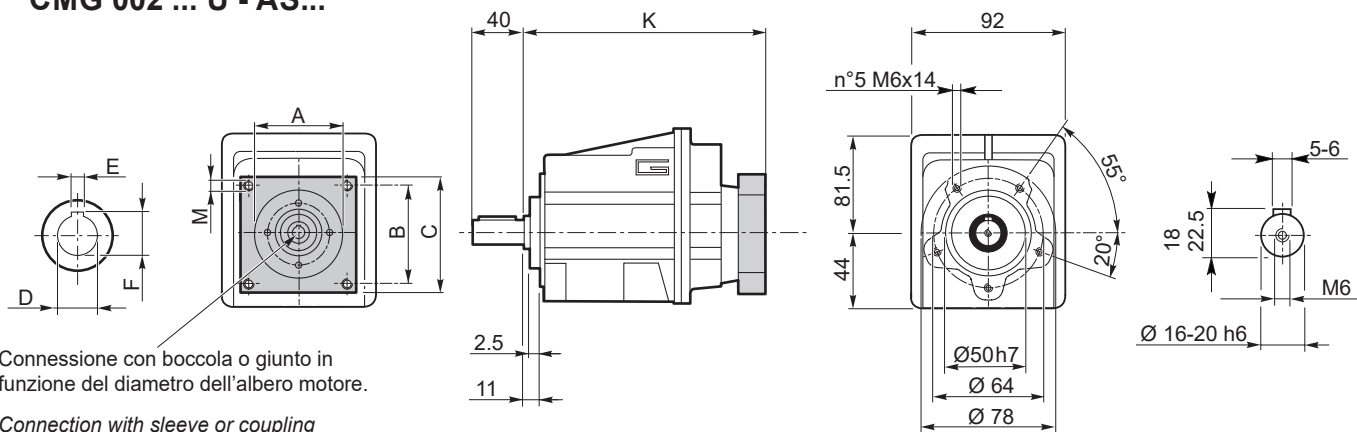
NOTA: per servizio continuo o altamente intermittente, contattare il servizio tecnico

NOTE: for continuous or highly intermittent duty, please contact our technical service

Dimensioni CMG con flange motore AS

CMG dimensions with motor flanges AS

CMG 002 ... U - AS...



CMG002..H → **BB19**

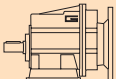
CMG002..F → **BB20**

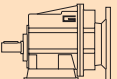
CMG002..H/F → **BB21**

Dimensioni / Dimensions								
AS	A	B	C	M	K	D	E	F
AS392FX	38.1	47.1	64	M5	146	9	3	10.5
						11	4	12.8
						14	5	16.3
AS384FX	73	69.6	86	M5	146	9	3	10.5
						11	4	12.8
						14	5	16.3
...

Dati tecnici

Technical data

	n_2 [min ⁻¹]	Mn_2 [Nm]	Pn_1 [kW]	i
-----------------------------------------------------------------------------------	-------------------------------	----------------	----------------	-----

	n_2 [min ⁻¹]	Mn_2 [Nm]	Pn_1 [kW]	i
-----------------------------------------------------------------------------------	-------------------------------	----------------	----------------	-----

CMG 012

$n_1 = 1400$ rpm

367	60	2.4	3.82
302	60	2.0	4.63
246	60	1.6	5.69
181	80	1.6	7.72
153	80	1.3	9.17
143	80	1.2	9.81
122	100	1.3	11.50
118	100	1.3	11.90
101	120	1.3	13.80
96	120	1.3	14.62
78	120	1.0	17.86
73	120	1.0	19.07
71	120	0.92	19.83
59	120	0.78	23.56
47	120	0.62	29.56
39	120	0.52	35.47
31	120	0.40	45.89
29	120	0.37	49.00
26	120	0.34	53.33
23	120	0.30	60.15

CMG 012

$n_1 = 3000$ rpm

786	47	4.01	3.82
648	47	3.31	4.63
527	47	2.69	5.69
389	62	2.65	7.72
327	62	2.23	9.17
306	62	2.08	9.81
261	78	2.22	11.50
252	78	2.14	11.90
217	94	2.22	13.80
205	94	2.09	14.62
168	94	1.72	17.86
157	94	1.61	19.07
151	94	1.54	19.83
127	94	1.30	23.56
102	94	1.04	29.56
85	94	0.86	35.47
65	94	0.67	45.89
61	94	0.63	49.00
56	94	0.57	53.33
50	94	0.51	60.15

NOTA: per servizio continuo o altamente intermittente, contattare il servizio tecnico

NOTE: for continuous or highly intermittent duty, please contact our technical service

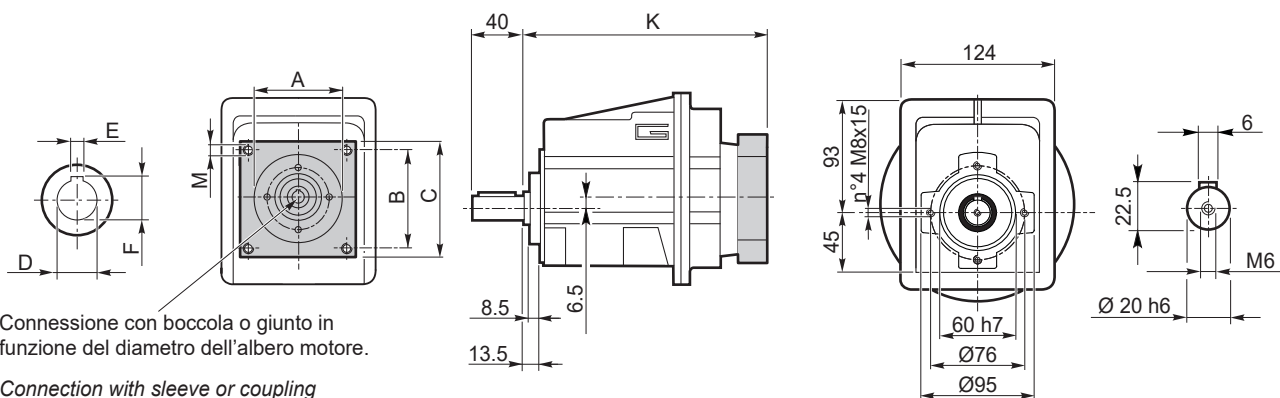
CMG013: disponibile nella versione a 3 stadi con rapporto di riduzione fino a 443,59

CMG013: 3 stage version available up to reduction ratio 443.59

Dimensioni CMG con flange motore AS

CMG dimensions with motor flanges AS

CMG 012 ... U - AS...



Connessione con boccia o giunto in funzione del diametro dell'albero motore.

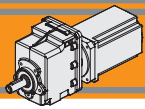
Connection with sleeve or coupling depending on motorshaft's diameter.

CMG012..H → **BB19**

CMG012..F → **BB20**

CMG012..H/F → **BB21**

Dimensioni / Dimensions								
AS	A	B	C	M	K	D	E	F
AS392FX	38.1	47.1	64	M5	175.5	9	3	10.5
						11	4	12.8
						14	5	16.3
AS384FX	73	69.6	86	M5	175.5	9	3	10.5
						11	4	12.8
						14	5	16.3
AS302	73	69.6	86	M5	195	19	6	21.8
						24	8	27.3
...



Motoriduttori brushless CC ad ingranaggi cilindrici

Brushless DC helical in-line gearmotors

Dati tecnici

Technical data

	n_2 [min ⁻¹]	Mn_2 [Nm]	Pn_1 [kW]	i		n_2 [min ⁻¹]	Mn_2 [Nm]	Pn_1 [kW]	i
CMG 022					CMG 022				
$n_1 = 1400$ rpm	383	100	4.2	3.66	$n_1 = 3000$ rpm	821	78	6.98	3.66
	316	100	3.4	4.43		676	78	5.76	4.43
	257	100	2.8	5.45		551	78	4.69	5.45
	189	120	2.5	7.39		406	94	4.15	7.39
	160	120	2.1	8.78		342	94	3.49	8.78
	141	120	1.8	9.93		302	94	3.08	9.93
	127	200	2.8	11.01		272	156	4.64	11.01
	116	200	2.5	12.05		249	156	4.24	12.05
	106	160	1.8	13.21		227	125	3.09	13.21
	95	200	2.1	14.81		203	156	3.45	14.81
	82	130	1.2	17.10		175	101	1.94	17.10
	70	200	1.5	20.08		149	156	2.54	20.08
	59	200	1.28	23.85		126	156	2.14	23.85
	47	200	1.02	29.93		100	156	1.71	29.93
	39	200	0.85	35.91		84	156	1.42	35.91
	30	200	0.66	46.46		65	156	1.10	46.46
	28	200	0.62	49.61		60	156	1.03	49.61
	26	200	0.57	54.00		56	156	0.95	54.00
	23	200	0.50	60.90		49	156	0.84	60.90
	23	120	0.30	60.15		50	94	0.51	60.15

NOTA: per servizio continuo o altamente intermittente, contattare il servizio tecnico

NOTE: for continuous or highly intermittent duty, please contact our technical service

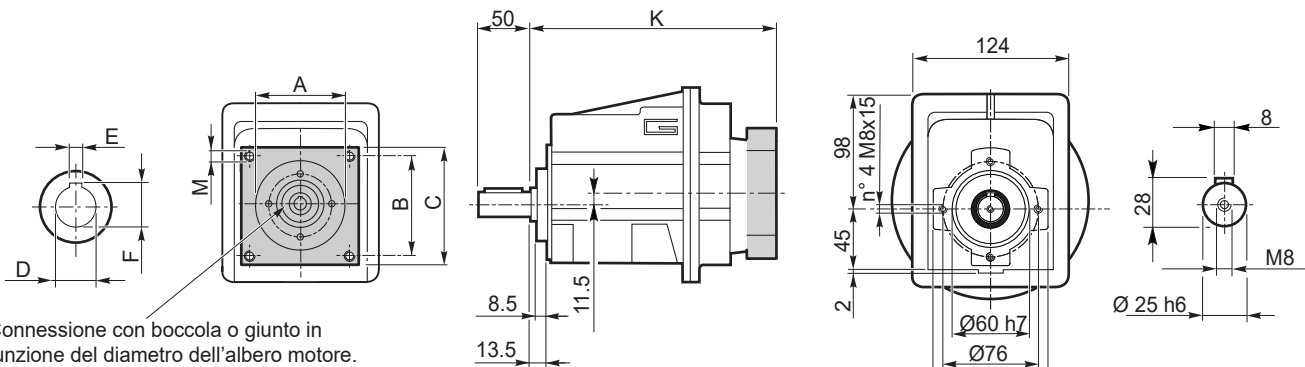
CMG023: disponibile nella versione a 3 stadi con rapporto di riduzione fino a 449.14

CMG023: 3 stage version available up to reduction ratio 449.14

Dimensioni CMG con flange motore AS

CMG dimensions with motor flanges AS

CMG 022 ... U - AS...

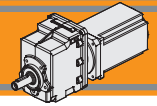


CMG022..H → **BB19**

CMG022..F → **BB20**

CMG022..H/F → **BB21**

Dimensioni / Dimensions								
AS	A	B	C	M	K	D	E	F
AS392FX	38.1	47.1	64	M5	185.5	9	3	10.5
						11	4	12.8
						14	5	16.3
AS384FX	73	69.6	86	M5	185.5	9	3	10.5
						11	4	12.8
						14	5	16.3
AS302	73	69.6	86	M5	205	19	6	21.8
						24	8	27.3
...



Dati tecnici

Technical data

	n_2 [min ⁻¹]	Mn_2 [Nm]	Pn_1 [kW]	i
CMG 032				
$n_1 = 1400$ rpm	374	150	6.1	3.74
	311	150	5.1	4.50
	255	150	4.2	5.48
	222	180	4.4	6.31
	177	180	3.5	7.93
	154	180	3.0	9.08
	128	180	2.5	10.93
	111	250	3.0	12.60
	105	250	2.9	13.30
	92	280	2.8	15.30
	77	240	2.0	18.21
	73	280	2.2	19.24
	66	240	1.70	21.15
	56	300	1.80	24.99
	46	300	1.50	30.57
	41	300	1.30	34.20
	36	300	1.20	38.63
	32	300	1.04	44.18
	27	300	0.89	51.30
	23	300	0.80	60.80

	n_2 [min ⁻¹]	Mn_2 [Nm]	Pn_1 [kW]	i
CMG 032				
$n_1 = 3000$ rpm	802	117	10.23	3.74
	666	117	8.50	4.50
	547	117	6.98	5.48
	476	140	7.28	6.31
	378	140	5.79	7.93
	330	140	5.06	9.08
	275	140	4.21	10.93
	238	195	5.06	12.60
	226	195	4.80	13.30
	196	218	4.67	15.30
	165	187	3.36	18.21
	156	218	3.71	19.24
	142	187	2.90	21.15
	120	234	3.06	24.99
	98	234	2.50	30.57
	88	234	2.24	34.20
	78	234	1.98	38.63
	68	234	1.73	44.18
	58	234	1.49	51.30
	49	234	1.26	60.80

NOTA: per servizio continuo o altamente intermittente, contattare il servizio tecnico

NOTE: for continuous or highly intermittent duty, please contact our technical service

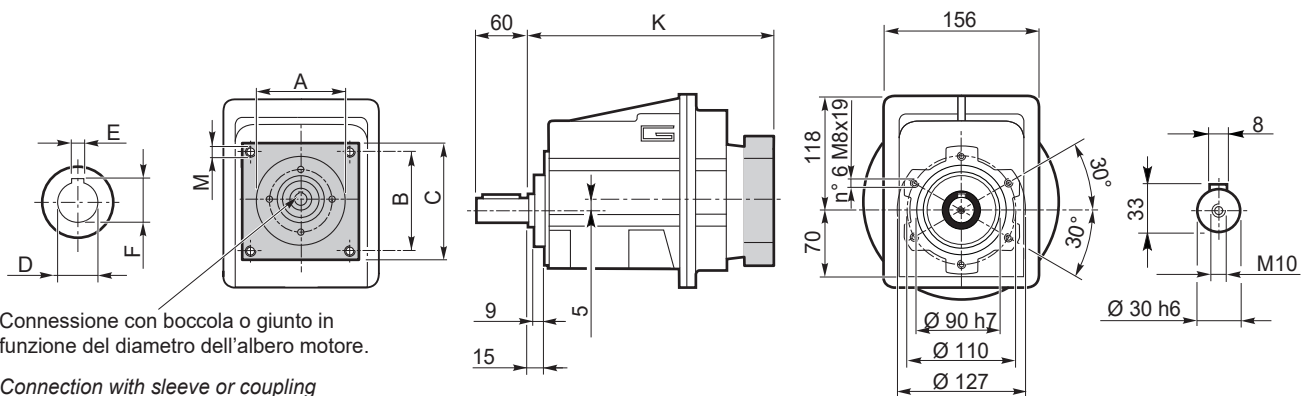
CMG033: disponibile nella versione a 3 stadi con rapporto di riduzione fino a 427.03

CMG033: 3 stage version available up to reduction ratio 427.03

Dimensioni CMG con flange motore AS

CMG dimensions with motor flanges AS

CMG 032 ... U - AS...

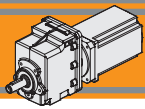


CMG032..H → BB19

CMG032..F → BB20

CMG032..H/F → BB21

Dimensioni / Dimensions								
AS	A	B	C	M	K	D	E	F
...



Motoriduttori brushless CC ad ingranaggi cilindrici

Brushless DC helical in-line gearmotors

Dati tecnici

Technical data

	n_2 [min ⁻¹]	Mn_2 [Nm]	Pn_1 [kW]	i
CMG 042				
$n_1 = 1400$ rpm	374	230	9.4	3.74
	311	230	7.8	4.50
	255	230	6.4	5.48
	222	260	6.3	6.31
	177	260	5.0	7.93
	154	280	4.7	9.08
	128	280	3.9	10.93
	111	350	4.2	12.60
	105	350	4.0	13.30
	92	420	4.2	15.30
	73	420	3.3	19.24
	56	500	3.1	24.99
	46	500	2.50	30.57
	41	500	2.20	34.20
	36	500	2.00	38.63
	32	500	1.73	44.18
	27	500	1.49	51.30
	23	480	1.20	60.80
	27	300	0.89	51.30
	23	300	0.80	60.80

	n_2 [min ⁻¹]	Mn_2 [Nm]	Pn_1 [kW]	i
CMG 042				
$n_1 = 3000$ rpm	802	179	15.69	3.74
	666	179	13.03	4.50
	547	179	10.71	5.48
	476	203	10.52	6.31
	378	203	8.37	7.93
	330	218	7.87	9.08
	275	218	6.54	10.93
	238	273	7.09	12.60
	226	273	6.72	13.30
	196	328	7.01	15.30
	156	328	5.57	19.24
	120	390	5.11	24.99
	98	390	4.17	30.57
	88	390	3.73	34.20
	78	390	3.30	38.63
	68	390	2.89	44.18
	58	390	2.49	51.30
	49	374	2.02	60.80
	58	234	1.49	51.30
	49	234	1.26	60.80

NOTA: per servizio continuo o altamente intermittente, contattare il servizio tecnico

NOTE: for continuous or highly intermittent duty, please contact our technical service

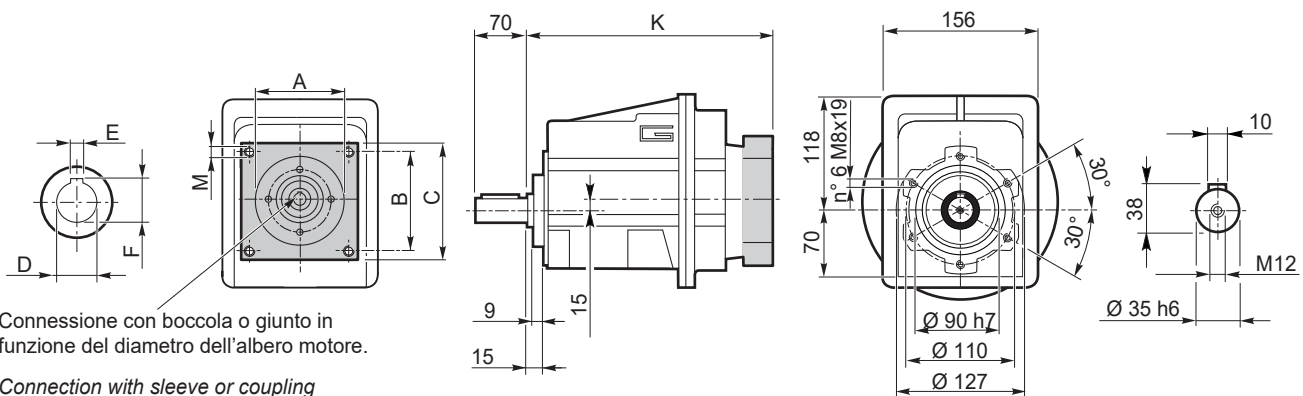
CMG043: disponibile nella versione a 3 stadi con rapporto di riduzione fino a 427.03

CMG043: 3 stage version available up to reduction ratio 427.03

Dimensioni CMG con flange motore AS

CMG dimensions with motor flanges AS

CMG 042 ... U - AS...



CMG042..H → **BB19**

CMG042..F → **BB20**

CMG042..H/F → **BB21**

Dimensioni / Dimensions								
AS	A	B	C	M	K	D	E	F
...

 **TRANSTECNO SRL**
HEADQUARTERS

Company subject to the management
and coordination of INTERPUMP GROUP SPA
Via Caduti di Sabbiano, 11/D-E
40011 Anzola dell'Emilia (BO)
ITALY
T+39 051 64 25 811
F +39 051 73 49 43
sales@transtecno.com
www.transtecno.com

**TRANSTECNO®**
the modular gearmotor
MEMBER OF INTERPUMP GROUP




 **HANGZHOU INTERPUMP
POWER TRANSMISSIONS CO LTD**
No.4 Xiuyan Road Fengdu Industry Zone
Pingyao Town Yuhang District
Hangzhou City, Zhejiang Province
311115 – CHINA
T +86 571 86 92 02 60
info-china@transtecno.cn
www.transtecno.cn

 **TRANSTECNO IBÉRICA
THE MODULAR GEARMOTOR, S.A.**
Carrer de la Ciència, 45
08840 Viladecans (Barcelona) - SPAIN
T +34 931 598 950
info@transtecno.es
www.transtecno.es

 **TRANSTECNO B.V.**
Siliciumweg 32
3812 SX Amersfoort - NETHERLANDS
T +31(0) 33 45 19 505
info@transtecno.nl
www.transtecno.nl

 **TRANSTECNO AANDRIJFTECHNIEK B.V.**
Siliciumweg 32
3812 SX Amersfoort - NETHERLANDS
T +31 (0) 33 20 47 006
info@transtecnoaandrijftechnik.nl
www.transtecnoaandrijftechnik.nl

 **MA TRANSTECNO S.A.P.I. DE C.V.**
Julián Sepúlveda Dávila #107,
Parque Industrial SG
Apodaca, Nuevo León, CP. 66640
MÉXICO
T +52 8113340920
info@transtecno.com.mx
www.transtecno.com.mx


 **TRANSTECNO USA**
8 Creek Parkway,
Boothwyn PA 19061-8136 - UNITED STATES
T + 1 (610) 4970154

TRANSTECNO USA – WEST COAST BRANCH
14561 Fryelands Blvd SE
Monroe, WA 98272 - UNITED STATES
T +1 360-863-1300
usaoffice@transtecno.com
www.transtecno.com

 **TRANSTECNO CANADA**
51 B Caldari Road Unit 10
Vaughan, ON L4K 4G3 - CANADA
T +1 905 761 0762
canadaoffice@transtecno.com
www.transtecno.com

 **TRANSTECNO INDIA**
#6A, Sipcot Industrial complex, Phase-1,Elasagiri Road
Hosur – 635126 Tamilnadu - INDIA
T +91 4344 274434
M +91 81443 88800

TRANSTECNO INDIA – NORTH BRANCH
Plot No: 3 A, Sector 2, IIE, Sidcul, Pantnagar
U.S. Nagar, Uttarakhand – 263153 - INDIA
indiaoffice@transtecno.com
www.transtecno.com

 **TRANSTECNO BRAZIL**
Rua Gilberto de Zorzi, 525 Forqueta - CEP. 95115-730
CX Postal 3544 Caxias do Sul RS – BRAZIL

TRANSTECNO BRAZIL – SÃO PAULO BRANCH
R. Mafalda Barnabe Soliane, 314 – CEP. 13347-610
Indaiatuba, São Paulo - BRAZIL
T +55 19 3437 2520

TRANSTECNO BRAZIL – PORTO ALEGRE BRANCH
Rua Dr. Freire Alemão 155 / 402 - CEP. 90450-060
Auxiliadora Porto Alegre RS - BRAZIL
T +55 51 4042 0916
M +55 51 811 45 962
braziloffice@transtecno.com
www.transtecno.com.br

 **INTERPUMP ANTRIEBSTECHNIK GMBH**
Büro Stuttgart - GERMANY
T +49 (0)171 4781909
germanoffice@transtecno.com
www.transtecno.com

 **SALES OFFICE OCEANIA**
Unit 5, 12 Nyholt Drive, Yatala 4207
Queensland - AUSTRALIA
T +61 07 3800 0103
M +61 04 38060997

UNIT 9, 94 Boundary Rd, Sunshine West 3020
Victoria - AUSTRALIA
T +61 9312 4722
oceaniaoffice@transtecno.com
www.transtecno.com.au