

**MINI**  **TECNO**™  
**small** but strong

**BLP**

Motoriduttori brushless CC epicicloidali  
Brushless DC planetary gearmotors

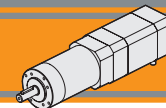


**MINI**  **TECNO**™ brand of  
**TRANSTECNO**®



**BLDC**

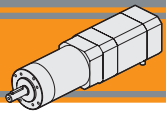




<b>Indice</b>	<b>Index</b>	Pag. Page
Caratteristiche tecniche	<i>Technical features</i>	<b>CE2</b>
Designazione	<i>Classification</i>	<b>CE2</b>
Simbologia	<i>Symbols</i>	<b>CE2</b>
Lubrificazione e temperatura	<i>Lubrication and temperature</i>	<b>CE3</b>
Carichi radiali	<i>Radial loads</i>	<b>CE3</b>
Rapporti	<i>Ratios</i>	<b>CE3</b>
PM52 con motore brushless BLS 022.240	<i>PM52 with brushless motor BLS 022.240</i>	<b>CE4</b>
PM52 con motore brushless BLS 043.240	<i>PM52 with brushless motor BLS 043.240</i>	<b>CE6</b>
PM62 con motore brushless BL 070.240	<i>PM62 with brushless motor BL 070.240</i>	<b>CE8</b>
PM62 con motore brushless BL 070.24B	<i>PM62 with brushless motor BL 070.24B</i>	<b>CE8</b>
PM62 con motore brushless BL 070.480	<i>PM62 with brushless motor BL 070.480</i>	<b>CE8</b>
PM62 con motore brushless BL 070.48B	<i>PM62 with brushless motor BL 070.48B</i>	<b>CE8</b>
PM62 con motore brushless BL 140.480	<i>PM62 with brushless motor BL 140.480</i>	<b>CE8</b>
Dati tecnici	<i>Technical data</i>	<b>CE10</b>
Dimensioni PM con flange motore AS	<i>PM dimensions with motor flanges AS</i>	<b>CE11</b>
Flange uscita	<i>Output flange</i>	<b>CE12</b>

Questa sezione annulla e sostituisce ogni precedente edizione o revisione. Qualora questa sezione non Vi sia giunta in distribuzione controllata, l'aggiornamento dei dati ivi contenuto non è assicurato. **In tal caso la versione più aggiornata è disponibile sul nostro sito internet [www.transtecno.com](http://www.transtecno.com)**

*This section replaces any previous edition and revision. If you obtained this catalogue other than through controlled distribution channels, the most up to date content is not guaranteed. In this case the latest version is available on our web site [www.transtecno.com](http://www.transtecno.com)*



## Caratteristiche tecniche

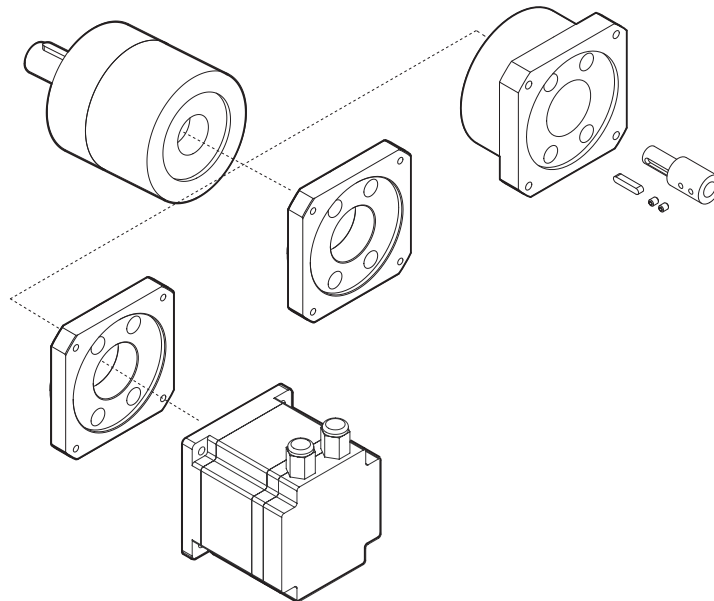
## Technical features

Le caratteristiche principali dei motoriduttori brushless CC epicicloidali della serie BLP sono:

The main features of brushless DC planetary gearmotors BLP range are:

- Alimentazione in bassa tensione 24/36/48 Vcc
- Motore Brushless CC con grado di protezione IP55
- Coppie motori disponibili da 0.22 Nm a 1.4 Nm
- Lubrificazione permanente a grasso
- Completamente in metallo
- Doppio cuscinetto su albero di uscita
- Disponibili anche nella versione con solo riduttore, sia con flangia di entrata standard che con flangia e manicotto dedicati

- Low voltage power supply 24/36/48 Vdc
- Brushless DC motor in IP55 protection Standard
- Motor torque ratings available from 0.22 Nm up to 1.4 Nm
- Permanent grease long life lubrication
- Completely made out of metal
- Double ball bearing on output shaft
- Gearbox only version also available, with either standard input flange or customized flange and coupling



## Designazione

## Classification

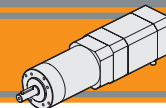
RIDUTTORE / GEARBOX			
PM	52	2	46
Tipo Type	Grandezza Size	Stadi riduttore Gearbox stages	Rapporto in Ratio in
PM	52 62	1 2 3	Vedere tabelle See tables

MOTORE / MOTOR		
BL070.480	48V	BR
Tipo Type	Tensione Voltage	Freno Brake
BLS022.240	24V-36V	24V
BLS043.240	24V-36V	48V
BL070.240	24V	
BL070.24B	24V	
BL070.48B	48V	
BL070.480	48V	
BL140.480	48V	

## Simbologia

## Symbols

Ns	n° stadi / No. stages	Mn <sub>2</sub>	[Nm]	Coppia nominale in uscita in funzione di Pn1 Nominal output torque referred to Pn1
ir	rapporto reale / real ratio	V	[V]	Tensione / Voltage
M <sub>2</sub>	[Nm] coppia in uscita output torque	n <sub>1MAX</sub>	[Rpm]	Velocità max entrata / Max input speed
Rd	rendimento dinamico / efficiency	n <sub>2</sub>	[Rpm]	Velocità in uscita / Output Speed
A <sub>2</sub>	[N] Carico assiale ammissibile in uscita Permitted output axial load	IP		Grado di protezione / Enclosure protection
R <sub>2</sub>	[N] Carico radiale ammissibile in uscita Permitted output radial load	Kg		Peso / Weight
Pn <sub>1</sub>	[kW] Potenza nominale in entrata Nominal input power	sf		Fattore di servizio / Service Factor



**Lubrificazione e temperatura**

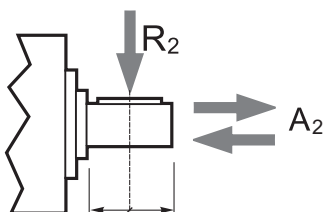
**Lubrication and temperature**

I motoriduttori epicicloidali BLP sono lubrificati in modo permanente, non richiedono quindi ulteriore manutenzione. Questo gli consente di essere installati praticamente ovunque. Temperatura ambiente 0 ÷ 40 °C (in assenza di congelamento ed in assenza di condensa). Per temperature diverse, contattare nostro UT.

Planetary BLP gearmotors are life-time lubricated with grease, therefore they are maintenance free. They can be installed in any location. Ambient temperature 0 ÷ 40 °C (in the absence of freezing and condensation). For temperature outside this range please contact our technical dept.

**Carichi radiali**

**Radial loads**



Ns	Carichi Radiali R <sub>2</sub> [N] / Radial Load R <sub>2</sub> [N]	
	PM52	PM62
1	200	240
2	320	360
3	450	520

Ns	Carichi Assiali A <sub>2</sub> [N] / Axial Load A <sub>2</sub> [N]	
	PM52	PM62
1	60	70
2	100	100
3	150	150

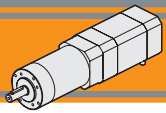
**Rapporti**

**Ratios**

Ns	PM 52 / 62		Rd	PM 52	PM 62
	in	ir		kg	kg
1	<b>4</b>	<b>3.7</b>	0.8	0.7	0.8
	4	4.28			
	5	5.18			
	<b>7</b>	<b>6.75</b>			
2	<b>14</b>	<b>13.73</b>	0.75	0.9	1.2
	16	15.88			
	18	18.36			
	19	19.2			
	22	22.2			
	<b>25</b>	<b>25.01</b>			
	27	26.85			
	29	28.93			
	35	34.97			
	<b>46</b>	<b>45.56</b>			
3	51	50.89	0.7	1.1	1.6
	59	58.85			
	<b>68</b>	<b>68.06</b>			
	71	71.16			
	79	78.71			
	<b>93</b>	<b>92.7</b>			
	95	95.17			
	100	99.5			
	107	107.2			
	115	115.07			
	124	123.97			
	130	129.62			
	139	139.13			
	150	149.9			
	<b>169</b>	<b>168.84</b>			
	181	181.24			
195	195.26				
236	236.09				
<b>308</b>	<b>307.54</b>				
4	a richiesta	on request			

**Rapporti preferenziali**  
Preferred ratios

Disponibile a 4 stadi con rapporti fino a 2076  
Available 4 stages with ratio up to 2076



**PM52 con motore brushless**

**PM52 with brushless motor**

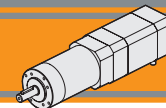
PM52			BLS022.240														
			24V						36V								
Ns	ir	in	n <sub>2MIN</sub> [ rpm ]			n <sub>2MAX</sub> [ rpm ]			n <sub>1MAX</sub> [ rpm ]	n <sub>2MIN</sub> [ rpm ]			n <sub>2MAX</sub> [ rpm ]			n <sub>1MAX</sub> [ rpm ]	
			M <sub>2</sub> [Nm]	sf		M <sub>2</sub> [Nm]	sf			M <sub>2</sub> [Nm]	sf		M <sub>2</sub> [Nm]	sf			
1	<b>3.7</b>	<b>4</b>	81	0.7	9.0	811	0.7	6.1	3000	108	0.7	9.0	1081	0.7	5.4	4000	
	4.28	4	70	0.8	7.8	701	0.8	5.3		93	0.8	7.8	935	0.8	4.7		
	5.18	5	58	0.9	6.4	579	0.9	4.4		77	0.9	6.4	772	0.9	3.9		
	<b>6.75</b>	<b>7</b>	44	1.2	4.9	444	1.2	3.3		59	1.2	4.9	593	1.2	3.0		
2	<b>13.73</b>	<b>14</b>	22	2.3	7.6	218	2.3	5.2		29	2.3	7.6	291	2.3	4.6		
	15.88	16	19	2.6	6.6	189	2.6	4.5		25	2.6	6.6	252	2.6	4.0		
	18.36	18	16	3.0	5.7	163	3.0	3.9		22	3.0	5.7	218	3.0	3.4		
	19.2	19	16	3.2	5.4	156	3.2	3.7		21	3.2	5.4	208	3.2	3.3		
	22.2	22	14	3.7	4.7	135	3.7	3.2		18	3.7	4.7	180	3.7	2.8		
	<b>25.01</b>	<b>25</b>	12	4.1	4.2	120	4.1	2.8		16	4.1	4.2	160	4.1	2.5		
	26.9	27	11	4.4	3.9	112	4.4	2.6		15	4.4	3.9	149	4.4	2.3		
	28.9	29	10	4.8	3.6	104	4.8	2.5		14	4.8	3.6	138	4.8	2.2		
	35.0	35	8.6	5.8	3.0	86	5.8	2.0		11	5.8	3.0	114	5.8	1.8		
	<b>45.6</b>	<b>46</b>	6.6	7.5	2.3	66	7.5	1.6		8.8	7.5	2.3	88	7.5	1.4		
	3	50.9	51	5.9	8	4.7	59	7.8		3.2	7.9	8	4.7	79	7.8		2.8
		58.9	59	5.1	9	4.1	51	9.1		2.8	6.8	9	4.1	68	9.1		2.4
<b>68.1</b>		<b>68</b>	4.4	10	3.5	44	10	2.4	5.9	10	3.5	59	10	2.1			
71.2		71	4.2	11	3.4	42	11	2.3	5.6	11	3.4	56	11	2.0			
78.7		79	3.8	12	3.0	38	12	2.1	5.1	12	3.0	51	12	1.8			
<b>92.7</b>		<b>93</b>	3.2	14	2.6	32	14	1.7	4.3	14	2.6	43	14	1.5			
95.2		95	3.2	15	2.5	32	15	1.7	4.2	15	2.5	42	15	1.5			
99.5		100	3.0	15	2.4	30	15	1.6	4.0	15	2.4	40	15	1.4			
107.2		107	2.8	17	2.2	28	17	1.5	3.7	17	2.2	37	17	1.3			
115.07		115	2.6	18	2.1	26	18	1.4	3.5	18	2.1	35	18	1.2			
123.97		124	2.4	19	1.9	24	19	1.3	3.2	19	1.9	32	19	1.2			
129.62		130	2.3	20	1.8	23	20	1.3	3.1	20	1.8	31	20	1.1			
139.13		139	2.2	21	1.7	22	21	1.2	2.9	21	1.7	29	21	1.0			
149.9		150	2.0	23	1.6	20	23	1.1	2.7	23	1.6	27	23	1.0			
<b>168.84</b>		<b>169</b>	1.8	26	1.4	18	26	1.0	2.4	26	1.4	24	26	0.8			
181.24		181	1.7	28	1.3	17	28	0.9	2.2	28	1.3	22	28	0.8			
195.26	195	1.5	30	1.2	15	30	0.8	2.0	30	1.2	20	30	0.7				
236.09	236	1.3	36	1.0	13	36	0.7	1.7	36	1.0	17	31	0.7				
<b>307.54</b>	<b>308</b>	1.0	47	0.8	9.8	36	0.7	1.3	47	0.8	13	31	0.7				

**NOTA:** per servizio continuo o altamente intermittente, contattare il servizio tecnico

**NOTE:** for continuous or highly intermittent duty, please contact our technical service

**Rapporti preferenziali**  
Preferred ratios

**Attenzione: superamento della coppia nominale supportata dal riduttore per servizio S1. Contattare il ns. servizio tecnico**  
**Attention: rated torque withstood by gear reducer for service in S1 is exceeded. Please, contact our technical office.**



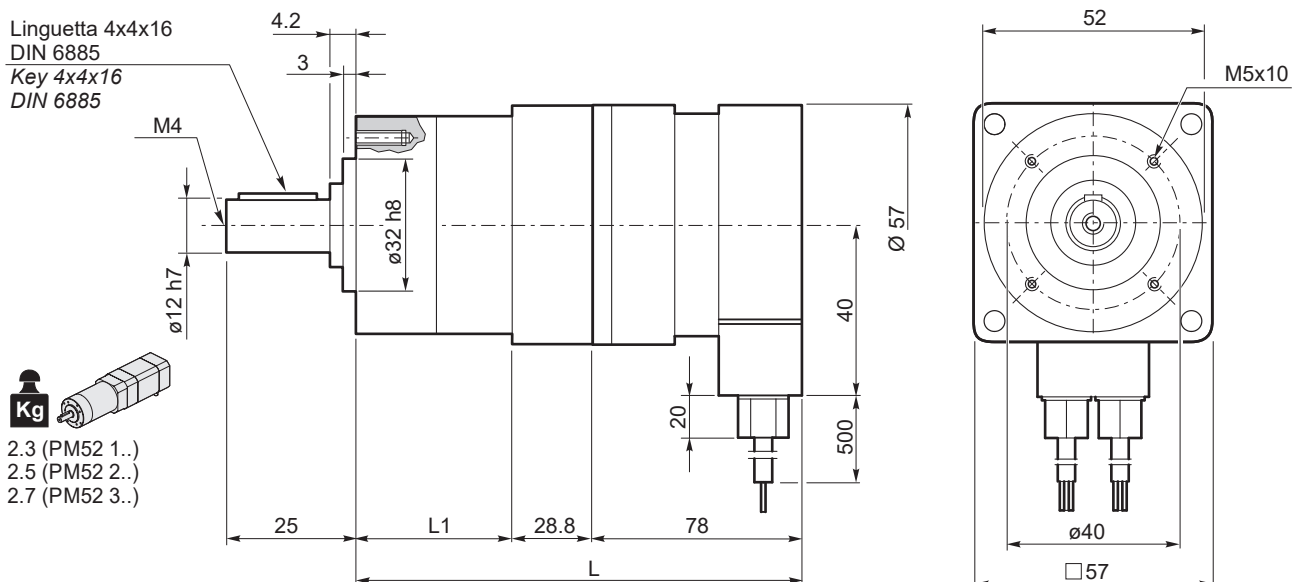
PM52 con motore brushless

PM52 with brushless motor

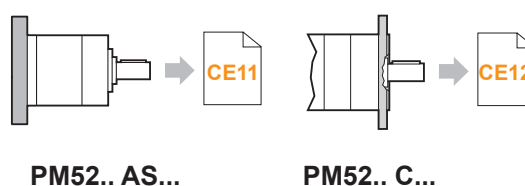
Tipo Type	Numero di poli Number of poles	Numero di fasi Number of phase	Tensione Rated voltage [ V ]	Numero di giri Rated speed [ rpm ]	Coppia nominale Rated torque [ Nm ]	Potenza nominale Rated power [ W ]
BLS022.240	4	3	36	4000	0.22	92
			24	3000		70
Tipo Type	Coppia massima Peak torque [ Nm ]	Corrente nominale Rated current [ A ]	Resistenza Resistance [ ohm ]	Induttanza Inductance [ mH ]	Corrente massima Peak current [ A ]	Peso Weight [ kg ]
BLS022.240	0.44	3.7	0.64	3.1	7.4	0.72

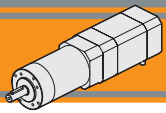


PM52..  
+  
BLS022.240



PM52	Ns	L1	BLS022.240	
			L	
	1	47.2	155.5	
	2	61.3	169.5	
	3	75.6	183.5	





PM52 con motore brushless

PM52 with brushless motor

PM52			BLS043.240														
			24V						36V								
Ns	ir	in	n <sub>2MIN</sub> [ rpm ]			n <sub>2MAX</sub> [ rpm ]			n <sub>1MAX</sub> [ rpm ]	n <sub>2MIN</sub> [ rpm ]			n <sub>2MAX</sub> [ rpm ]			n <sub>1MAX</sub> [ rpm ]	
			M <sub>2</sub> [Nm]	sf		M <sub>2</sub> [Nm]	sf			M <sub>2</sub> [Nm]	sf		M <sub>2</sub> [Nm]	sf			
1	<b>3.7</b>	<b>4</b>	81	1.3	4.6	811	1.3	3.1	3000	108	1.3	4.6	1081	1.3	2.8	4000	
	4.28	4	70	1.5	4.0	701	1.5	2.7		93	1.5	4.0	935	1.5	2.4		
	5.18	5	58	1.8	3.3	579	1.8	2.2		77	1.8	3.3	772	1.8	2.0		
	<b>6.75</b>	<b>7</b>	44	2.3	2.5	444	2.3	1.7		59	2.3	2.5	593	2.3	1.5		
2	<b>13.73</b>	<b>14</b>	22	4.4	3.9	218	4.4	2.6		29	4.4	3.9	291	4.4	2.3		
	15.88	16	19	5.1	3.4	189	5.1	2.3		25	5.1	3.4	252	5.1	2.0		
	18.36	18	16	5.9	2.9	163	5.9	2.0		22	5.9	2.9	218	5.9	1.7		
	19.2	19	16	6.2	2.8	156	6.2	1.9		21	6.2	2.8	208	6.2	1.7		
	22.2	22	14	7.2	2.4	135	7.2	1.6		18	7.2	2.4	180	7.2	1.4		
	<b>25.01</b>	<b>25</b>	12	8.1	2.1	120	8.1	1.5		16	8.1	2.1	160	8.1	1.3		
	26.9	27	11	8.7	2.0	112	8.7	1.4		15	8.7	2.0	149	8.7	1.2		
	28.9	29	10	9.3	1.8	104	9.3	1.3		14	9.3	1.8	138	9.3	1.1		
	35.0	35	8.6	11	1.5	86	11.3	1.0		11	11	1.5	114	11	0.9		
	<b>45.6</b>	<b>46</b>	6.6	15	1.2	66	14.7	0.8		8.8	15	1.2	88	15	0.7		
	3	50.9	51	5.9	15	2.4	59	15.3		1.6	7.9	15	2.4	79	15		1.4
		58.9	59	5.1	18	2.1	51	17.7		1.4	6.8	18	2.1	68	18		1.2
<b>68.1</b>		<b>68</b>	4.4	20	1.8	44	20	1.2	5.9	20	1.8	59	20	1.1			
71.2		71	4.2	21	1.7	42	21	1.2	5.6	21	1.7	56	21	1.0			
78.7		79	3.8	24	1.6	38	24	1.1	5.1	24	1.6	51	24	0.9			
<b>92.7</b>		<b>93</b>	3.2	28	1.3	32	28	0.9	4.3	28	1.3	43	28	0.8			
95.2		95	3.2	29	1.3	32	29	0.9	4.2	29	1.3	42	29	0.8			
99.5		100	3.0	30	1.2	30	30	0.8	4.0	30	1.2	40	30	0.7			
107.2		107	2.8	32	1.1	28	32	0.8	3.7	32	1.1	37	31	0.7			
115.07		115	2.6	35	1.1	26	35	0.7	3.5	35	1.1	35	31	0.7			
123.97		124	2.4	37	1.0	24	36	0.7	3.2	37	1.0	32	31	0.7			
129.62		130	2.3	39	0.9	23	36	0.7	3.1	39	0.9	31	31	0.7			
139.13		139	2.2	42	0.9	22	36	0.7	2.9	42	0.9	29	31	0.7			
149.9		150	2.0	45	0.8	20	36	0.7	2.7	45	0.8	27	31	0.7			
<b>168.84</b>		<b>169</b>	1.8	51	0.7	18	36	0.7	2.4	51	0.7	24	31	0.7			
181.24		181	1.7	53	0.7	17	36	0.7	2.2	53	0.7	22	31	0.7			
195.26	195	1.5	53	0.7	15	36	0.7	2.0	53	0.7	20	31	0.7				
236.09	236	1.3	53	0.7	13	36	0.7	1.7	53	0.7	17	31	0.7				
<b>307.54</b>	<b>308</b>	1.0	53	0.7	9.8	36	0.7	1.3	53	0.7	13	31	0.7				

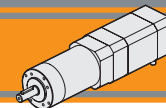
**NOTA:** per servizio continuo o altamente intermittente, contattare il servizio tecnico

**NOTE:** for continuous or highly intermittent duty, please contact our technical service

**Rapporti preferenziali**  
Preferred ratios

**Attenzione: superamento della coppia nominale supportata dal riduttore per servizio S1. Contattare il ns. servizio tecnico**  
**Attention: rated torque withstood by gear reducer for service in S1 is exceeded. Please, contact our technical office.**





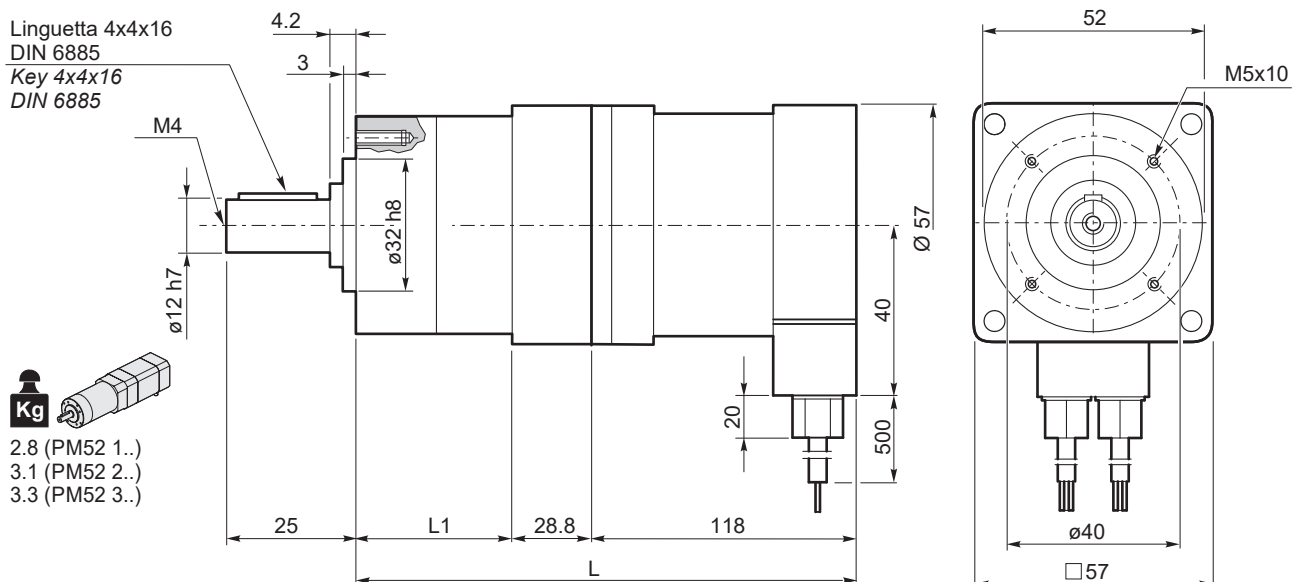
PM52 con motore brushless

PM52 with brushless motor

Tipo Type	Numero di poli Number of poles	Numero di fasi Number of phase	Tensione Rated voltage [ V ]	Numero di giri Rated speed [ rpm ]	Coppia nominale Rated torque [ Nm ]	Potenza nominale Rated power [ W ]
BLS043.240	4	3	36	4000	0.43	180
			24	3000		130
Tipo Type	Coppia massima Peak torque [ Nm ]	Corrente nominale Rated current [ A ]	Resistenza Resistance [ ohm ]	Induttanza Inductance [ mH ]	Corrente massima Peak current [ A ]	Peso Weight [ kg ]
BL043.240	0.86	6	0.35	1	12.0	1.25

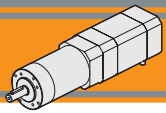


PM52..  
+  
BLS043.240



PM52	Ns	L1	BLS043.240	
			L	L
	1	47.2	195.5	
	2	61.3	209.5	
	3	75.6	223.5	





PM62 con motore brushless

PM62 with brushless motor

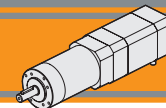
PM62			BL070.240 / BL070.24B BL070.480 / BL070.48B						BL140.480										
			24V / 48V						48V										
Ns	ir	in	n <sub>2MIN</sub> [ rpm ]			n <sub>2MAX</sub> [ rpm ]			n <sub>1MAX</sub> [ rpm ]	n <sub>2MIN</sub> [ rpm ]			n <sub>2MAX</sub> [ rpm ]			n <sub>1MAX</sub> [ rpm ]			
			M <sub>2</sub> [Nm]	sf		M <sub>2</sub> [Nm]	sf			M <sub>2</sub> [Nm]	sf		M <sub>2</sub> [Nm]	sf					
1	3.7	4	81	2.1	5.6	811	2.1	3.8	3000	81	4.1	2.8	811	4.1	1.9	3000			
	4.28	4	70	2.4	4.8	701	2.4	3.3		70	4.8	2.4	701	4.8	1.6				
	5.18	5	58	2.9	4.0	579	2.9	2.7		58	5.8	2.0	579	5.8	1.3				
	6.75	7	44	3.8	3.0	444	3.8	2.1		44	7.6	1.5	444	7.6	1.0				
2	13.73	14	22	7.2	5.1	218	7.2	3.5	3000	22	14.4	2.6	218	14.4	1.7	3000			
	15.88	16	19	8.3	4.4	189	8.3	3.0		19	16.7	2.2	189	16.7	1.5				
	18.36	18	16	9.6	3.8	163	9.6	2.6		16	19.3	1.9	163	19.3	1.3				
	19.2	19	16	10	3.7	156	10	2.5		16	20	1.8	156	20	1.2				
	22.2	22	14	12	3.2	135	12	2.1		14	23	1.6	135	23	1.1				
	25.01	25	12	13	2.8	120	13	1.9		12	26	1.4	120	26	1.0				
	26.9	27	11	14	2.6	112	14	1.8		11	28	1.3	112	28	0.9				
	28.9	29	10	15	2.4	104	15	1.6		10	30	1.2	104	30	0.8				
	35.0	35	8.6	18	2.0	86	18	1.4		8.6	37	1.0	86	36	0.7				
	45.6	46	6.6	24	1.5	66	24	1.0		6.6	48	0.8	66	36	0.7				
	3	50.9	51	5.9	25	3.0	59	25		2.0	3000	5.9	50	1.5	59		50	1.0	3000
		58.9	59	5.1	29	2.6	51	29		1.7		5.1	58	1.3	51		58	0.9	
68.1		68	4.4	33	2.2	44	33	1.5	4.4	67		1.1	44	67	0.7				
71.2		71	4.2	35	2.1	42	35	1.4	4.2	70		1.1	42	70	0.7				
78.7		79	3.8	39	1.9	38	39	1.3	3.8	77		1.0	38	71	0.7				
92.7		93	3.2	45	1.6	32	45	1.1	3.2	91		0.8	32	71	0.7				
95.2		95	3.2	47	1.6	32	47	1.1	3.2	93		0.8	32	71	0.7				
99.5		100	3.0	49	1.5	30	49	1.0	3.0	98		0.8	30	71	0.7				
107.2		107	2.8	53	1.4	28	53	1.0	2.8	105		0.7	28	71	0.7				
115.07		115	2.6	56	1.3	26	56	0.9	2.6	105		0.7	26	71	0.7				
123.97		124	2.4	61	1.2	24	61	0.8	2.4	105		0.7	24	71	0.7				
129.62		130	2.3	64	1.2	23	64	0.8	2.3	105		0.7	23	71	0.7				
139.13		139	2.2	68	1.1	22	68	0.7	2.2	105		0.7	22	71	0.7				
149.9		150	2.0	73	1.0	20	71	0.7	2.0	105		0.7	20	71	0.7				
168.84	169	1.8	83	0.9	18	71	0.7	1.8	105	0.7	18	71	0.7						
181.24	181	1.7	89	0.8	17	71	0.7	1.7	105	0.7	17	71	0.7						
195.26	195	1.5	96	0.8	15	71	0.7	1.5	105	0.7	15	71	0.7						
236.09	236	1.3	105	0.7	13	71	0.7	1.3	105	0.7	13	71	0.7						
307.54	308	1.0	105	0.7	9.8	71	0.7	1.0	105	0.7	9.8	71	0.7						

**NOTA:** per servizio continuo o altamente intermittente, contattare il servizio tecnico

**NOTE:** for continuous or highly intermittent duty, please contact our technical service

**Rapporti preferenziali**  
Preferred ratios

**Attenzione: superamento della coppia nominale supportata dal riduttore per servizio S1.**  
Contattare il ns. servizio tecnico  
**Attention: rated torque withstood by gear reducer for service in S1 is exceeded.**  
Please, contact our technical office.



PM62 con motore brushless

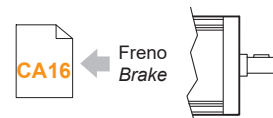
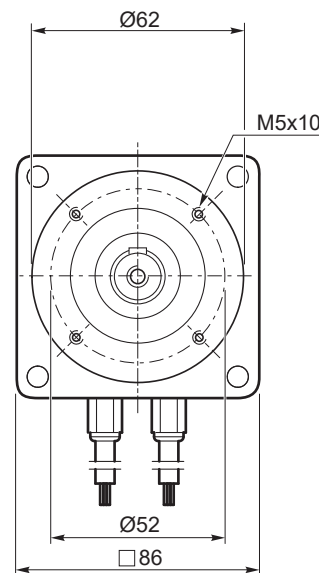
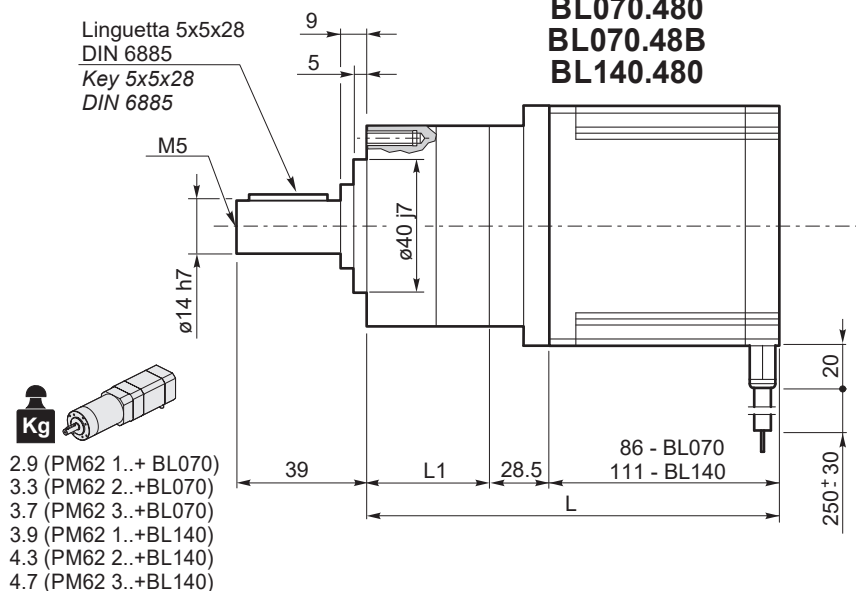
PM62 with brushless motor

Tipo Type	Numero di poli Number of poles	Numero di fasi Number of phase	Tensione Rated voltage [ V ]	Numero di giri Rated speed [ rpm ]	Coppia nominale Rated torque [ Nm ]	Potenza nominale Rated power [ W ]
BL070.240 BL070.24B	8	3	24	3000	0.7	220
BL070.480 BL070.48B	8	3	48	3000	0.7	220
BL140.480	8	3	48	3000	1.4	440
Tipo Type	Coppia massima Peak torque [ Nm ]	Corrente nominale Rated current [ A ]	Resistenza Resistance [ ohm ]	Induttanza Inductance [ mH ]	Corrente massima Peak current [ A ]	Peso Weight [ kg ]
BL070.240 BL070.24B	2.1	13	0.091	0.23	26	2.1
BL070.480 BL070.48B	1.4	6.5	0.34	1.0	13	2.1
BL140.480	2.8	13	0.16	0.5	26	3.15



PM62..

- + BL070.240
- + BL070.480
- + BL070.48B
- + BL140.480



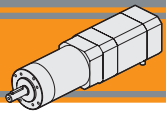
BL070.24B  
BL070.48B

PM62	Ns	L1	BL 070.480	BL 140.480
			L	L
	1	45.3	163.5	188.5
	2	62.2	179.5	204.5
	3	79.2	195.5	220.5



PM62.. AS...

PM62.. C...



**BLP**

Motoriduttori brushless CC epicicloidali  
Brushless DC planetary gearmotors

**MINI**  
TECNO

Dati tecnici

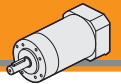
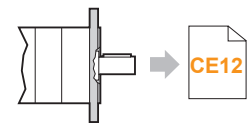
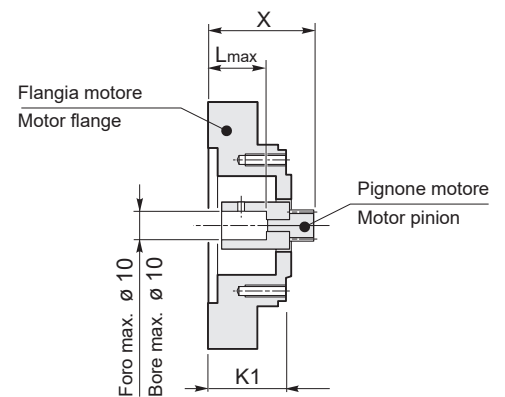
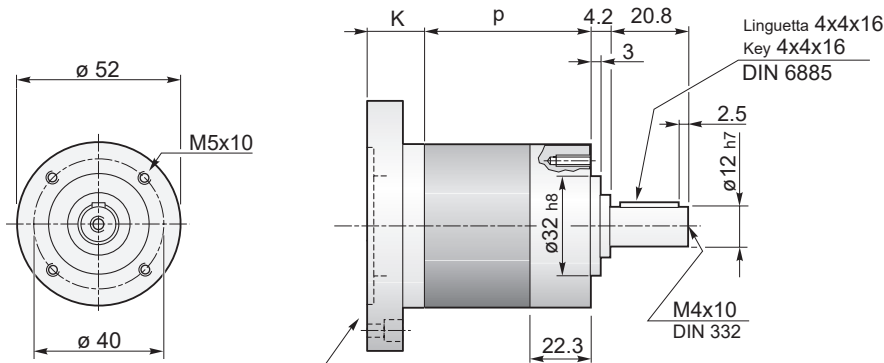
$n_1 = 3000$  rpm

Technical data

Ns	ir	in	PM52			PM62		
			R <sub>d</sub>	M <sub>n2</sub> [Nm]	R <sub>2</sub> [N]	R <sub>d</sub>	M <sub>n2</sub> [Nm]	R <sub>2</sub> [N]
1	3.70	4	0.80	4	200	0.80	8	240
	4.28	4						
	5.18	5						
	6.75	7						
2	13.73	14	0.75	12	320	0.75	25	360
	15.88	16						
	18.36	18						
	19.20	19						
	22.20	22						
	25.01	25						
	26.85	27						
	28.93	29						
	34.97	35						
	45.56	46						
3	50.89	51	0.70	25	450	0.70	50	520
	58.85	59						
	68.06	68						
	71.16	71						
	78.71	79						
	92.70	93						
	95.17	95						
	99.50	100						
	107.20	107						
	115.07	115						
	123.97	124						
	129.62	130						
	139.13	139						
	149.90	150						
	168.84	169						
181.24	181							
195.26	195							
236.09	236							
307.54	308							

**Rapporti preferenziali per le taglie P52 e P62.**  
*Preferred ratios for sizes P52 e P62.*

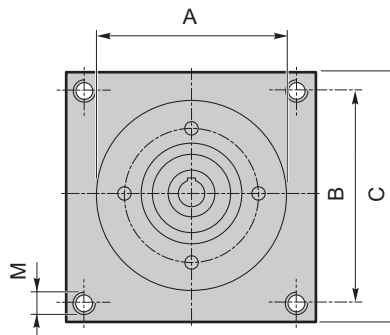
Disponibili 4 stadi con rapporti fino a 2076 / Available 4 stages with ratio up to 2076


**Dimensioni PM con flange motore AS**
**PM dimensions with motor flanges AS**
**PM52 - U - AS...**

**PM52.. C...**

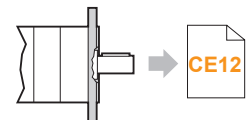
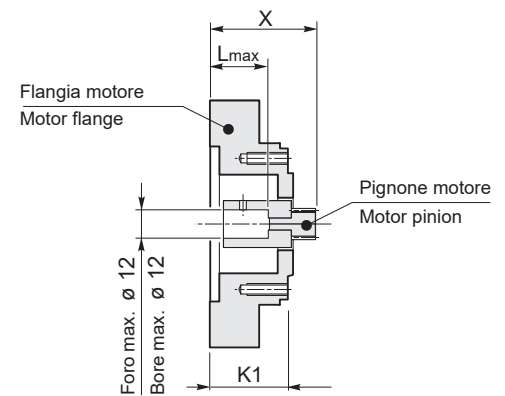
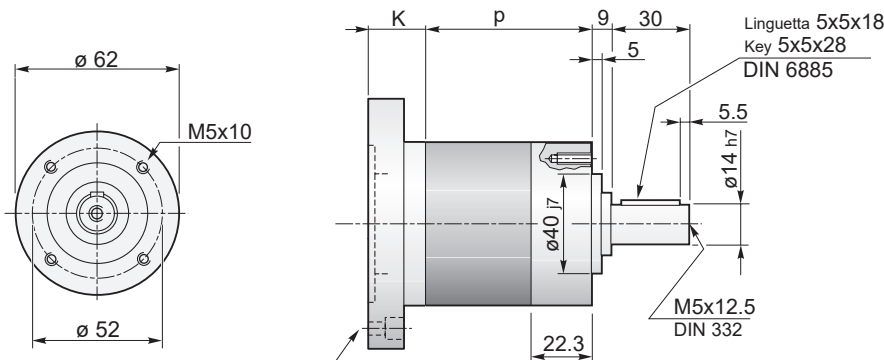
Lo spessore della flangia è variabile in funzione delle diverse lunghezze dell'albero motore.

Flange's thickness may vary depending on motorshaft's length.

Dimensioni / Dimensions							
AS	A	B	C	M	K1	L <sub>max</sub>	X
AS394PM	38.1	47.1	57	M5	31.2	23	41.5
...	...	...	...	...	...	...	...



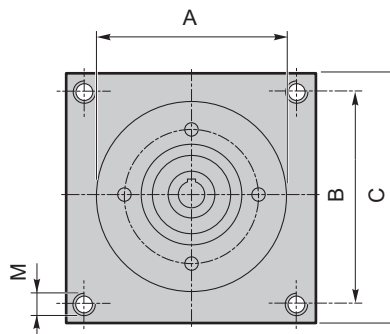
	Lunghezza riduttore Gearbox length		Kg
	P		
PM52...	1	47.2	0.7
	2	61.3	0.9
	3	75.6	1.1

**PM62 - U - AS...**

**PM62.. C...**

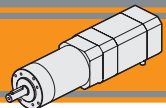
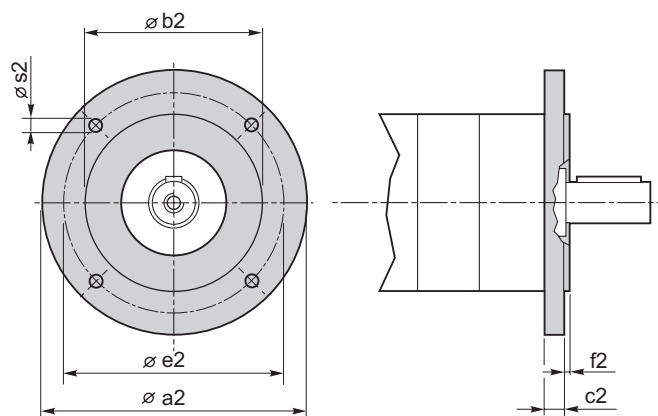
Lo spessore della flangia è variabile in funzione delle diverse lunghezze dell'albero motore.

Flange's thickness may vary depending on motorshaft's length.

Dimensioni / Dimensions							
AS	A	B	C	M	K1	L <sub>max</sub>	X
AS389PM	73	69.6	86	M5	30.8	23	44.3
...	...	...	...	...	...	...	...



	Lunghezza riduttore Gearbox length		Kg
	P		
PM62...	1	45.3	0.8
	2	62.2	1.2
	3	79.2	1.6

**Dimensioni flange uscita****Output flange dimensions****PM.. C..**

Flange uscita / Output flanges							
PM	a2	b2	c2	e2	f2	s2	Flangia Flange
52	80	50 j7	9	65	2.5	M5	<b>C80</b>
	90	60 j7	9	75	2.5	5.5	<b>C90</b>
	105	70 j7	9	85	2.5	6.5	<b>C105</b>
	120	80 j7	9	100	3.0	6.5	<b>C120</b>
62	80	50 j7	9	65	2.5	M5	<b>C80</b>
	90	60 j7	9	75	2.5	5.5	<b>C90</b>
	105	70 j7	9	85	2.5	6.5	<b>C105</b>
	120	80 j7	9	100	3.0	6.5	<b>C120</b>

 **TRANSTECNO SRL**  
**HEADQUARTERS**

Company subject to the management  
and coordination of INTERPUMP GROUP SPA  
Via Caduti di Sabbiano, 11/D-E  
40011 Anzola dell'Emilia (BO)  
ITALY  
T+39 051 64 25 811  
F +39 051 73 49 43  
sales@transtecno.com  
[www.transtecno.com](http://www.transtecno.com)

**TRANSTECNO®**  
the modular gearmotor

MEMBER OF INTERPUMP GROUP



 **HANGZHOU TRANSTECNO POWER TRANSMISSIONS CO LTD**  
No.4 Xiuyan Road Fengdu Industry Zone  
Pingyao Town Yuhang District  
Hangzhou City, Zhejiang Province  
311115 - CHINA  
T +86 571 86 92 02 60  
F +86 571 86 92 18 10  
info-china@transtecno.cn  
[www.transtecno.cn](http://www.transtecno.cn)

 **MA TRANSTECNO S.A.P.I. DE C.V.**  
Av. Mundial # 176, Parque Industrial  
JM Apodaca, Nuevo León,  
C.P. 66600 - MEXICO  
T +52 8113340920  
info@transtecno.com.mx  
[www.transtecno.com.mx](http://www.transtecno.com.mx)

 **TRANSTECNO IBÉRICA THE MODULAR GEARMOTOR, S.A.**  
Carrer de la Ciència, 45  
08840 Viladecans (Barcelona) - SPAIN  
T +34 931 598 950  
info@transtecno.es  
[www.transtecno.es](http://www.transtecno.es)

 **TRANSTECNO B.V.**  
Siliciumweg 32  
3812 SX Amersfoort - NETHERLANDS  
T +31(0) 33 45 19 505  
F +31(0) 33 45 19 506  
info@transtecno.nl  
[www.transtecno.nl](http://www.transtecno.nl)

 **TRANSTECNO AANDRIJFTECHNIEK B.V.**  
Siliciumweg 32  
3812 SX Amersfoort - NETHERLANDS  
T +31 (0) 33 20 4 7 006  
info@transtecnoaandrijftechnik.nl  
[www.transtecnoaandrijftechnik.nl](http://www.transtecnoaandrijftechnik.nl)

 **TRANSTECNO USA**  
8 Creek Parkway,  
Boothwyn PA 19061-8136 - UNITED STATES  
T +1 (610) 4970154  
F +1 (610) 497 6085

**TRANSTECNO USA – WEST COAST BRANCH**  
14561 Fryelands Blvd SE  
Monroe, WA 98272 - UNITED STATES  
T +1 360-863-1300  
F +1 360-863-1303  
usaoffice@transtecno.com  
[www.transtecno.com](http://www.transtecno.com)

 **TRANSTECNO CANADA**  
51 B Caldari Road Unit 10  
Vaughan, ON L4K 4G3 - CANADA  
T +1 905 761 0762  
F +1 905 761 9265  
canadaoffice@transtecno.com  
[www.transtecno.com](http://www.transtecno.com)

 **TRANSTECNO CHILE-PERU**  
Av. Los Libertadores 41  
Parque Industrial - Los Libertadores 16.500  
Santiago, Colina - CHILE  
T +56 2 29633870

Carretera Panamericana Sur KM 29.5,  
Interior I-3, Z.I. Lurin - PERU  
T +51 1 3546259 / + 51 1 3434231  
chileoffice@transtecno.com  
[www.transtecno.com](http://www.transtecno.com)

 **TRANSTECNO INDIA**  
#6A, Sipcot Industrial complex, Phase-1, Elasagiri Road  
Hosur - 635126 Tamilnadu - INDIA  
T +91 4344 274434  
M +91 81443 88800

**TRANSTECNO INDIA – NORTH BRANCH**  
Plot No: 3 A, Sector 2, IIE, Sidcul, Pantnagar  
U.S. Nagar, Uttarakhand – 263153 - INDIA  
indiaoffice@transtecno.com  
[www.transtecno.com](http://www.transtecno.com)

 **SALES OFFICE BRAZIL**  
Rua Dr. Freire Alemão 155 / 402 - CEP. 90450-060  
Auxiliadora Porto Alegre RS - BRAZIL  
T +55 51 3251 5447  
F +55 51 3251 5447  
M +55 51 8111 45 962  
braziloffice@transtecno.com  
[www.transtecno.com.br](http://www.transtecno.com.br)

 **SALES OFFICE OCEANIA**  
Unit 5, 12 Nyholt Drive, Yatala 4207  
Queensland - AUSTRALIA  
T +61 07 3800 0103  
M +61 04 38060997  
oceaniaoffice@transtecno.com  
[www.transtecno.com.au](http://www.transtecno.com.au)

 **SALES OFFICE SOUTH KOREA**  
772-41, Bongdong-ro, Bongdong-eup, Wanju-goon  
Chonbuk, 55313  
SOUTH KOREA  
T +82 70 8867 8897  
F +82 504 199 2107  
M +82 10 5094 2107  
koreaoffice@transtecno.com  
[www.transtecno.com](http://www.transtecno.com)

[www.minitecno.com](http://www.minitecno.com)  
[www.transtecno.com](http://www.transtecno.com)