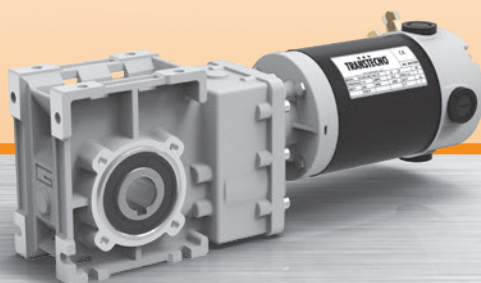


MINI  **TECNO**™
small but strong

NDCMB
ECMB

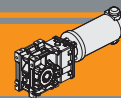
Motoriduttori CC ad assi ortogonali
DC helical bevel gearmotors



MINI  **TECNO**™ brand of
TRANSTECNO®



DC



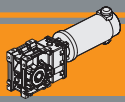
Pag.
Page



Indice	Index	
Caratteristiche tecniche	<i>Technical features</i>	BE2
Designazione	<i>Classification</i>	BE2
Sensi di rotazione	<i>Direction of rotation</i>	BE3
Simbologia	<i>Symbols</i>	BE3
Lubrificazione	<i>Lubrication</i>	BE3
Carichi radiali	<i>Radial loads</i>	BE3
Dati tecnici per servizio S2	<i>Technical data for S2 duty</i>	BE4
Motori applicabili	<i>Motor adapters</i>	BE6
Dimensioni	<i>Dimensions</i>	BE6
Accessori	<i>Accessories</i>	BE12

Questa sezione annulla e sostituisce ogni precedente edizione o revisione. Qualora questa sezione non Vi sia giunta in distribuzione controllata, l'aggiornamento dei dati ivi contenuto non è assicurato. **In tal caso la versione più aggiornata è disponibile sul nostro sito internet www.transtecno.com**

This section replaces any previous edition and revision. If you obtained this catalogue other than through controlled distribution channels, the most up to date content is not guaranteed. In this case the latest version is available on our web site www.transtecno.com



Caratteristiche tecniche

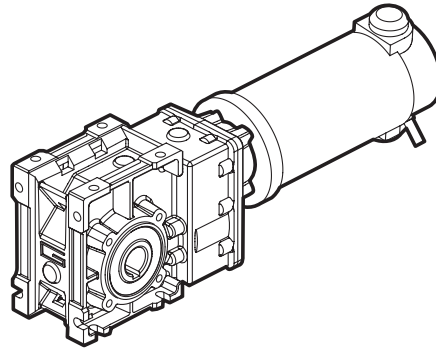
Technical features

I motoriduttori CC ortogonali a magneti permanenti in neodimio **NDCMB** e in ferrite **ECMB** hanno le seguenti caratteristiche principali:

NDCMB neodymium permanent magnets and **ECMB** ferrite permanent magnets DC helical bevel gearmotors range has the following main features:

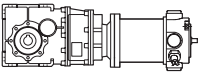
- Alimentazione in bassa tensione 12/24 Vcc
- Possibilità di montaggio encoder e freno
- Potenze motore disponibili da 100 a 800W S2
- Carcasse dei riduttori in pressofusione di alluminio
- Lubrificazione permanente con olio sintetico
- Ingranaggi cilindrici a denti elicoidali, induriti e rettificati
- Disponibili con giunto elastico in entrata

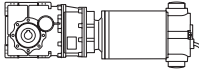

- Low voltage power supply 12/24 Vdc
- Suitable for encoder and brake assembly
- Motor power ratings available from 100 to 800W S2
- Die-cast aluminum housing
- Permanent synthetic oil long-life lubrication
- Ground-hardened helical gears
- Available with input flexible couplin

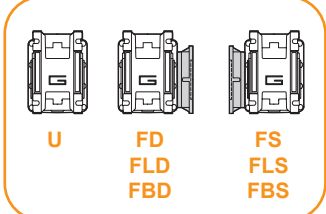
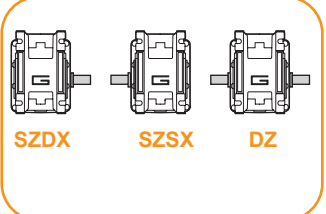
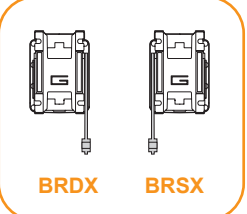
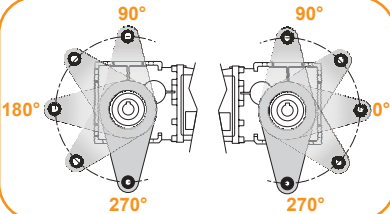


Designazione

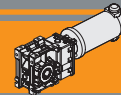
Classification

MOTORIDUTTORE / GEARMOTOR								
NDCMB	120/402	U	9.2	D20	SZDX	BRSX	90	240
Tipo Type	Grandezza Size	Versione Riduttore Gearbox Version	Rapporto Ratio	Albero di uscita Output shaft	Albero di uscita Output shaft	Braccio di reazione Torque arm	Angolo Angle	Versione Motore Motor Version
NDCMB 	120/402 180/402	U FD FS FLD FLS FBD FBS	Vedere tabella <i>See tables</i>	Vedere tabella <i>See tables</i>	SZDX SZSX DZ	BRDX BRSX *	0° 90° 180° 270°	120 240

MOTORIDUTTORE / GEARMOTOR									
ECMB	100/402	U	9.2	D20	SZDX	BRSX	90	240	FX
Tipo Type	Grandezza Size	Versione Riduttore Gearbox Version	Rapporto Ratio	Albero di uscita Output shaft	Albero di uscita Output shaft	Braccio di reazione Torque arm	Angolo Angle	Versione Motore Motor Version	Giunto elastico Flexible coupling
ECMB 	070/402 100/402 180/402 250/402 350/402 600/402	U FD FS FLD FLS FBD FBS	Vedere tabella <i>See tables</i>	Vedere tabella <i>See tables</i>	SZDX SZSX DZ	BRDX BRSX *	0° 90° 180° 270°	120 240 24E	FX 

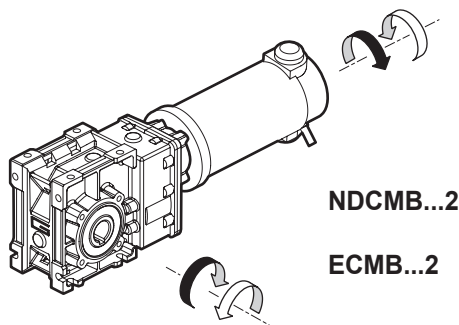
<p>Versione Riduttore Gearbox Version</p> 	<p>Albero di uscita Output shaft</p> 	<p>Braccio di reazione Torque arm *</p> 	<p>Angolo Angle</p> 
---	--	--	---

* **NOTA:** il braccio di reazione viene fornito smontato.
NOTE: the torque arm will be supplied not assembled.



Sensi di rotazione

Direction of rotation



Simbologia

Symbols

n_1 [min ⁻¹]	Velocità in ingresso / <i>Input speed</i>	M_2 [Nm]	Coppia in uscita in funzione di P_1 / <i>Output torque referred to P_1</i>
n_2 [min ⁻¹]	Velocità in uscita / <i>Output speed</i>	sf	Fattore di servizio / <i>Service factor</i>
i	Rapporto di riduzione / <i>Ratio</i>	A_2 [N]	Carico assiale ammissibile in uscita / <i>Permitted output axial load</i>
P_1 [kW]	Potenza in entrata / <i>Input power</i>	R_2 [N]	Carico radiale ammissibile in uscita / <i>Permitted output radial load</i>

Lubrificazione

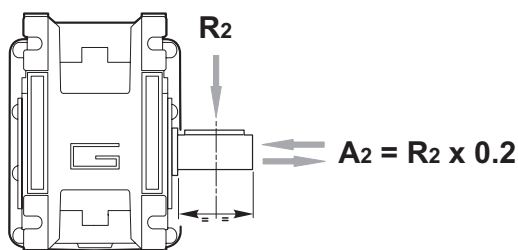
Lubrication

Tutti i riduttori nelle taglie 402 sono forniti completi di lubrificante sintetico viscosità 320, pertanto possono essere installati in qualunque posizione di montaggio e non necessitano di manutenzione.

Permanent synthetic oil long-life lubrication (viscosity grade 320) makes it possible to use sizes 402 in all mounting positions; for this reason they can be installed in any assembly position and do not require maintenance.

Carichi radiali

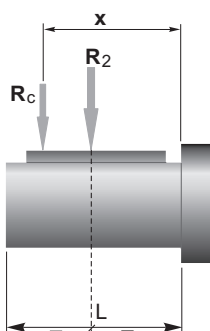
Radial loads



n_2 [min ⁻¹]	R_2 [N]
	CMB 402
400	905
300	996
200	1141
170	1204
140	1414
100	1582
90	1638
60	2047
40	2524
30	2778
20	3180
15	3500
10	3500

Quando il carico radiale risultante non è applicato sulla mezza-ria dell'albero occorre calcolare quello effettivo con la seguente formula:

When the resulting radial load is not applied on the centre line of the shaft it is necessary to calculate the effective load with the following formula:

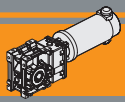


	CMB 402
a	86
b	66
R_{2MAX}	3500

$$R_c = \frac{R_2 \cdot a}{(b+x)} \leq R_{2MAX}$$

$$R \leq R_c$$

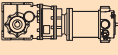
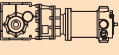
*a, b = valori riportati nella tabella
a, b = values given in the table*



Dati tecnici per servizio S2

NDCMB

Technical data for S2 duty

P ₁ [W]	n ₂ [min ⁻¹]	M ₂ [Nm]	sf	i		Versione motore Motor version	P ₁ [W]	n ₂ [min ⁻¹]	M ₂ [Nm]	sf	i		Versione motore Motor version
160							250						
(3000 min ⁻¹)	485	3.0	10.5	6.18	120/402	120/240	(3000 min ⁻¹)	485	4.6	6.7	6.18	180/402	120/240
	401	3.6	8.6	7.49									
	326	4.4	7.0	9.20									
	254	5.7	6.2	11.83									
	240	6.0	5.9	12.48									
	202	7.1	4.9	14.83									
	170	8.4	4.1	17.63									
	161	8.9	4.8	18.60									
	134	10	4.0	22.33									
	125	11	3.8	23.91									
	104	14	3.7	28.89									
	97	15	3.5	30.84									
	89	16	3.2	33.57									
	84	17	3.0	35.63									
	70	21	2.5	42.75									
	54	27	1.9	55.31									
	51	29	1.8	59.06									
	47	31	1.7	64.29									
	41	35	1.5	72.50									

NOTA: per servizio continuo o altamente intermittente, contattare il servizio tecnico

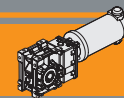
NOTE: for continuous or highly intermittent duty, please contact our technical service

Dati tecnici elettrici

Electrical technical data

ND 120 → 

ND 180 → 



Dati tecnici per servizio S2

ECMB

Technical data for S2 duty

P ₁ [W]	n ₂ [min ⁻¹]	M ₂ [Nm]	sf	i		Versione motore Motor version
100						
(3000 min ⁻¹)	485	1.8	16.8	6.18		12E/24E
	401	2.2	13.8	7.49		
	326	2.8	11.3	9.20		
	254	3.5	9.9	11.83		
	240	3.7	9.4	12.48		
	202	4.4	7.9	14.83		
	170	5.3	6.6	17.63		
	161	5.6	7.7	18.60		
	134	6.7	6.4	22.33		
	125	7.2	6.0	23.91		
	104	8.6	5.9	28.89		
	97	9.2	5.5	30.84		
	89	10	5.1	33.57		
	84	11	4.8	35.63		
	70	13	4.0	42.75		
	54	17	3.1	55.31		
	51	18	2.9	59.06		
	47	19	2.7	64.29		
	41	22	2.4	72.50		

P ₁ [W]	n ₂ [min ⁻¹]	M ₂ [Nm]	sf	i		Versione motore Motor version
350						
(3000 min ⁻¹)	485	6.5	4.8	6.18		250/402
	401	7.8	4	7.49		
	326	9.6	3.2	9.20		
	254	12	2.8	11.83		
	240	13	2.7	12.48		
	202	16	2.3	14.83		
	170	19	1.9	17.63		
	161	20	2.2	18.60		
	134	23	1.8	22.33		
	125	25	1.7	23.91		
	104	30	1.7	28.89		
	97	32	1.6	30.84		
	89	35	1.5	33.57		
	84	37	1.4	35.63		
	70	45	1.1	42.75		
	54	58	0.9	55.31		
	51	62	0.8	59.06		
	47	67	0.8	64.29		
	41	72	0.7	72.50		

140						
(3000 min ⁻¹)	485	2.6	12.0	6.18		100/402
	401	3.1	9.9	7.49		
	326	3.9	8.0	9.20		
	254	5.0	7.1	11.83		
	240	5.2	6.7	12.48		
	202	6.2	5.6	14.83		
	170	7.4	4.7	17.63		
	161	7.8	5.5	18.60		
	134	9.4	4.6	22.33		
	125	10	4.3	23.91		
	104	12	4.2	28.89		
	97	13	3.9	30.84		
	89	14	3.6	33.57		
	84	15	3.4	35.63		
	70	18	2.8	42.75		
	54	23	2.2	55.31		
	51	25	2.1	59.06		
	47	27	1.9	64.29		
	41	30	1.7	72.50		

500						
(3000 min ⁻¹)	485	9	3.4	6.18		350/402
	401	11	2.8	7.49		
	326	14	2.3	9.2		
	254	18	2.0	11.83		
	240	19	1.9	12.48		
	202	22	1.6	14.83		
	170	26	1.3	17.63		
	161	28	1.5	18.6		
	134	33	1.3	22.33		
	125	36	1.2	23.91		
	104	43	1.2	28.89		
	97	46	1.1	30.84		
	89	50	1.0	33.57		
	84	53	1.0	35.63		
	70	64	0.8	42.75		
	54	73	0.7	55.31		
	51	73	0.7	59.06		
	47	73	0.7	64.29		

250						
(3000 min ⁻¹)	485	4.6	6.7	6.18		180/402
	401	5.6	5.5	7.49		
	326	6.9	4.5	9.20		
	254	8.8	4.0	11.83		
	240	9.3	3.7	12.48		
	202	11	3.2	14.83		
	170	13	2.7	17.63		
	161	14	3.1	18.60		
	134	17	2.6	22.33		
	125	18	2.4	23.91		
	104	22	2.4	28.89		
	97	23	2.2	30.84		
	89	25	2.0	33.57		
	84	27	1.9	35.63		
	70	32	1.6	42.75		
	54	41	1.2	55.31		
	51	44	1.2	59.06		
	47	48	1.1	64.29		
	41	54	0.9	72.50		

800						
(3000 min ⁻¹)	485	15	2.1	6.18		600/402
	401	18	1.7	7.49		
	326	22	1.4	9.20		
	254	28	1.2	11.83		
	240	30	1.2	12.48		
	202	36	1.0	14.83		
	170	42	0.8	17.63		
	161	45	1.0	18.60		
	134	53	0.8	22.33		
	125	57	0.8	23.91		
	104	69	0.7	28.89		
	97	73	0.7	30.84		
	89	73	0.7	33.57		
	84	73	0.7	35.63		
	70	73	0.7	42.75		

NOTA
Verificare sempre che la coppia M₂ utilizzata non ecceda il valore indicato nelle caselle in grigio
NOTE
Please check that the output torque M₂ does not exceed the value in the grey areas

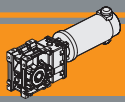
NOTA: per servizio continuo o altamente intermittente, contattare il servizio tecnico

NOTE: for continuous or highly intermittent duty, please contact our technical service

Dati tecnici elettrici

Electrical technical data

EC070 →	EC100 →	EC180 →	EC250 →	EC350 →	EC600 →
---------	---------	---------	---------	---------	---------



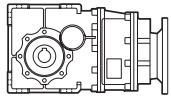
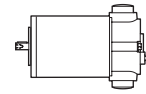
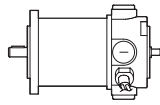
**NDCMB
ECMB**

**Motoriduttori CC ad assi ortogonali
DC Helical bevel gearmotors**



Motori applicabili

Motor adapters



		ND		EC					
		120.120	180.120	070.12E	100.120	180.120	250.120	350.120	600.120
		120.240	180.240	070.24E	100.240	180.240	250.240	350.240	600.240
CMB	402	6.18 - 72.50							

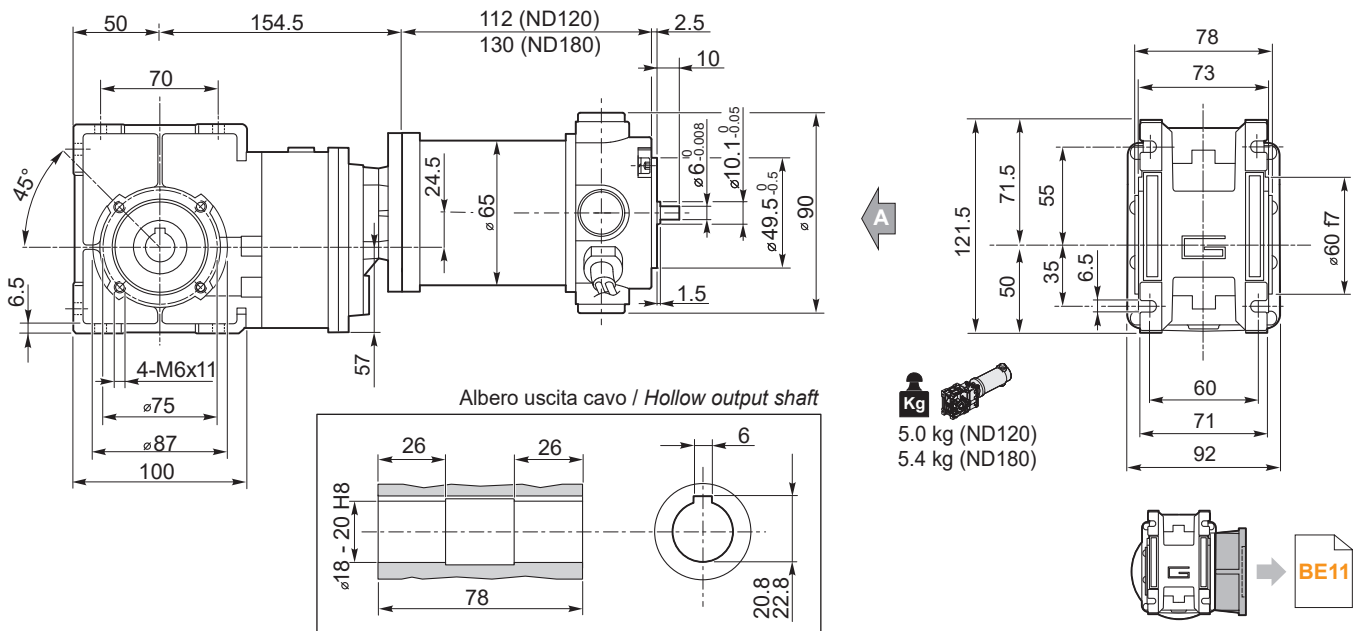
6.18 - 72.50

Rapporti di riduzione *i*
Ratio *i*

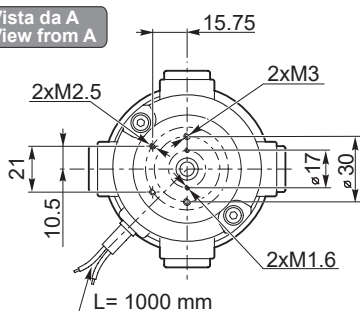
Dimensioni

Dimensions

**NDCMB120/402 U
NDCMB180/402 U**

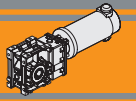


Vista da A
View from A



Freno / Brake → **BA9**

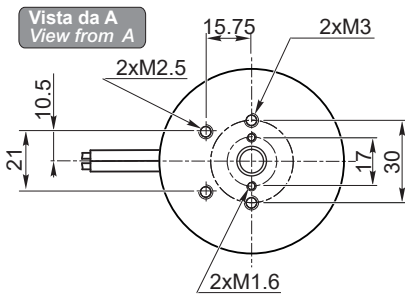
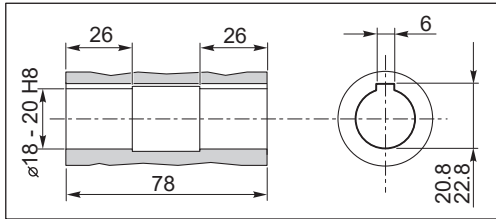
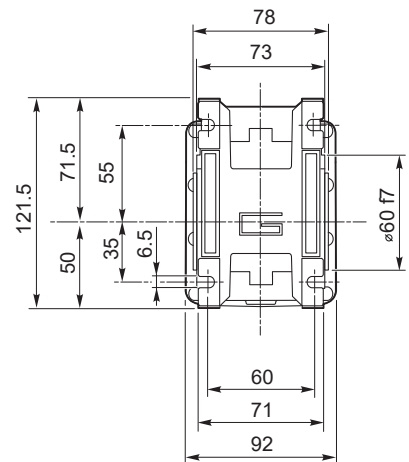
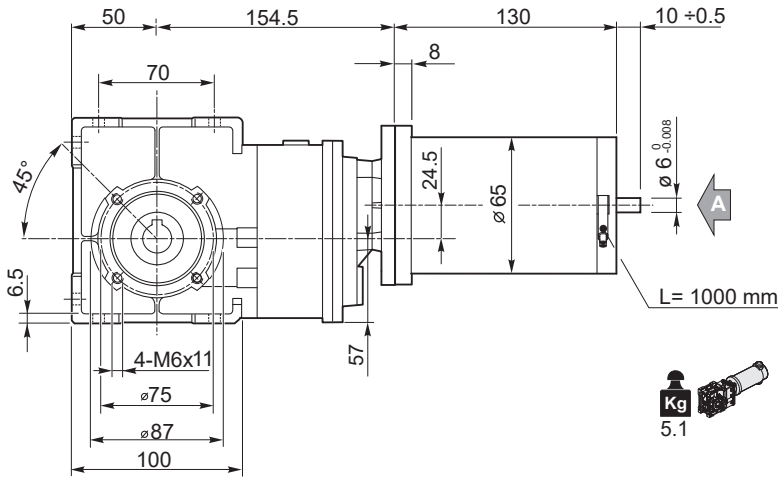
Encoder → **BA9**



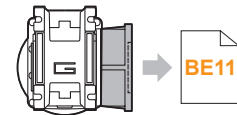
Dimensioni

Dimensions

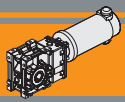
ECMB070/402 U



- Freno / Brake** → **BB23**
- Encoder** → **BB24**
- Motori / Motors IP66** → **BC2**



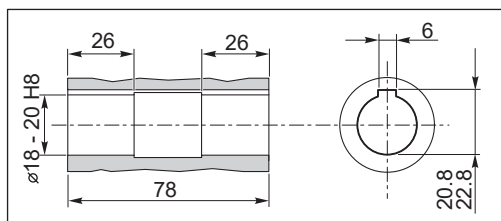
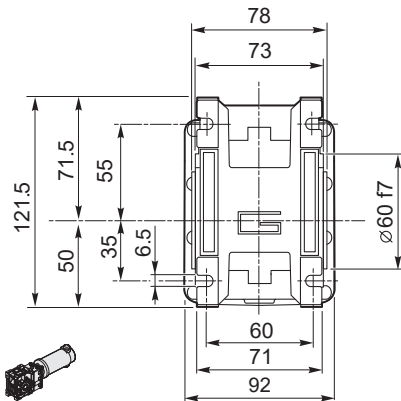
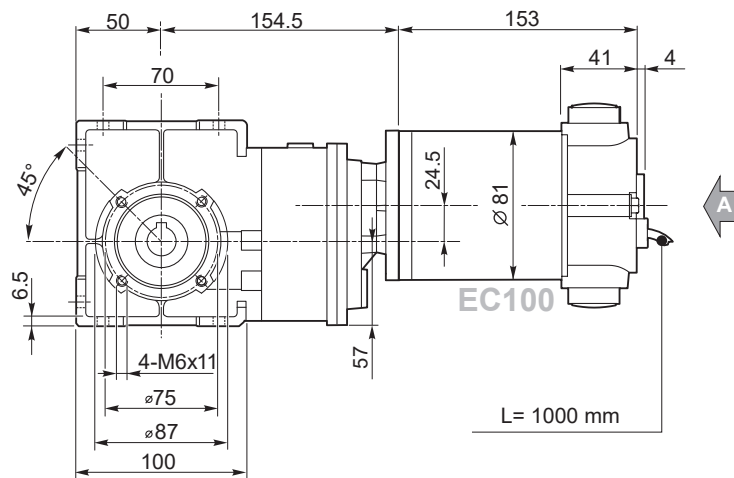
DC



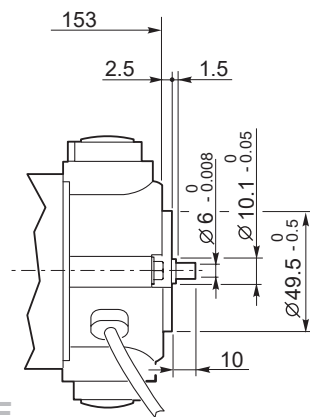
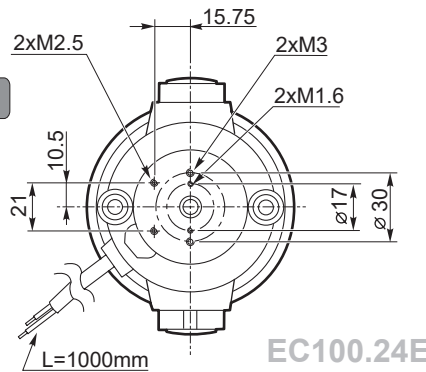
Dimensioni

Dimensions

ECMB100/402 U



Vista da A
View from A



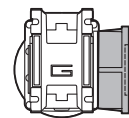
Motori / Motors IP66

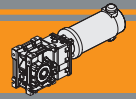


Encoder



Freno / Brake

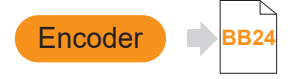
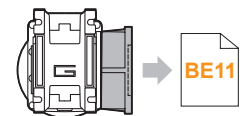
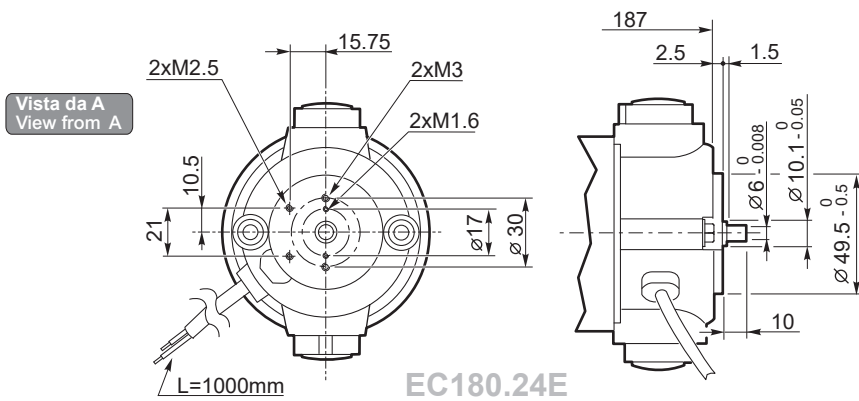
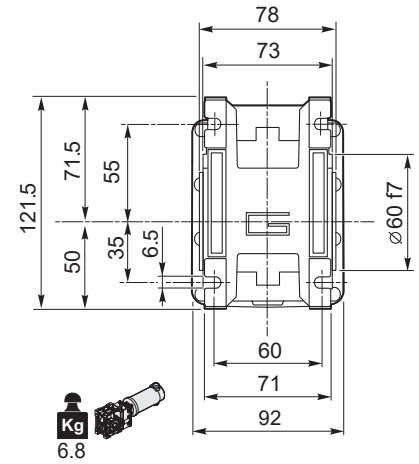
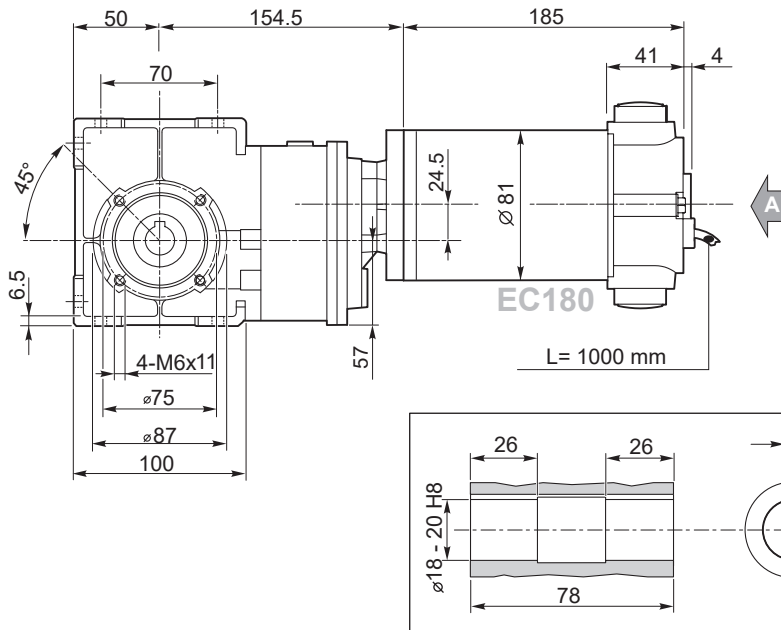


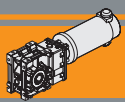


Dimensioni

Dimensions

ECMB180/402 U

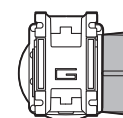
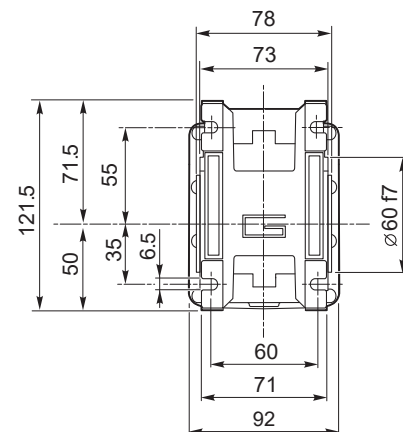
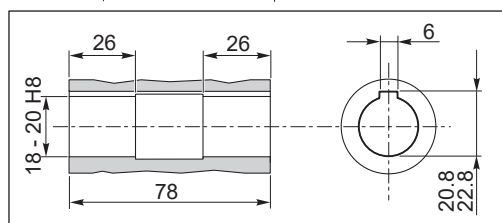
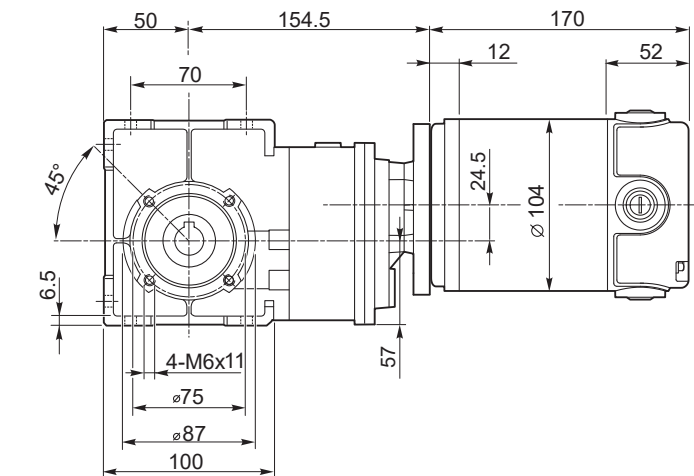




Dimensioni

Dimensions

ECMB250/402 U

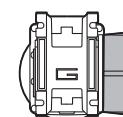
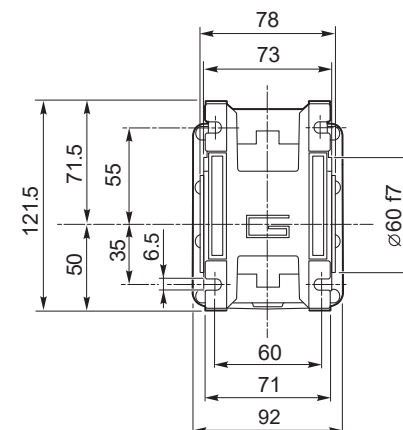
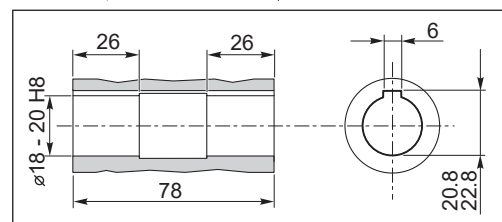
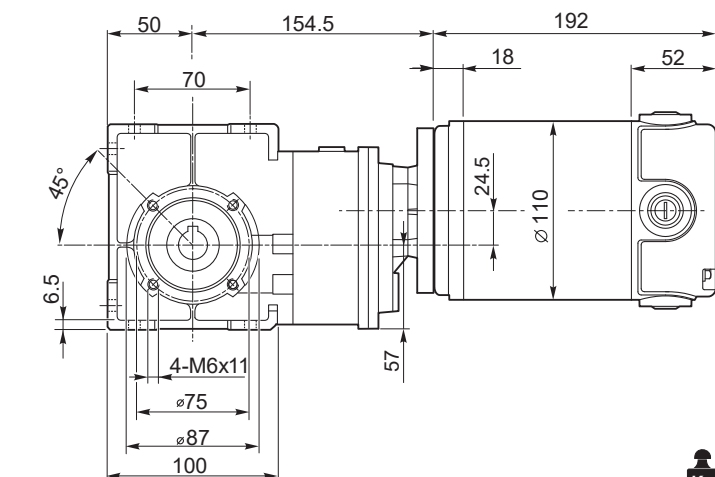


BE11

Motori / Motors IP66

BC8

ECMB350/402 U



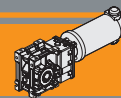
BE11

Freno / Brake

BB24

Motori / Motors IP66

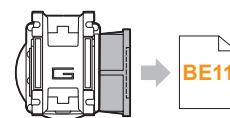
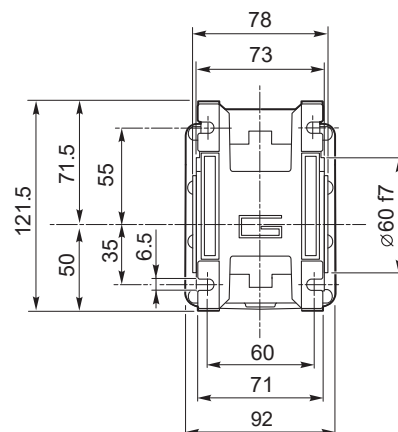
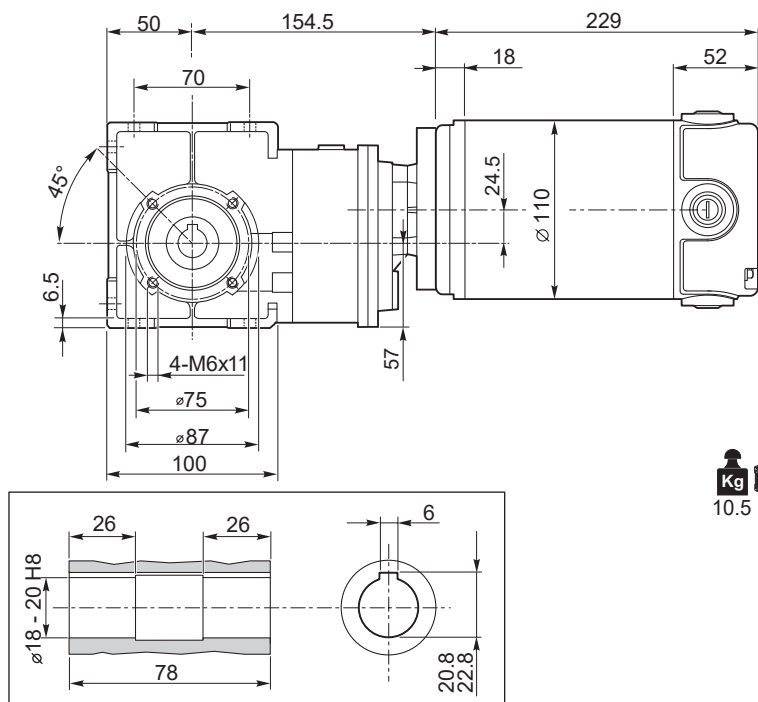
BC10



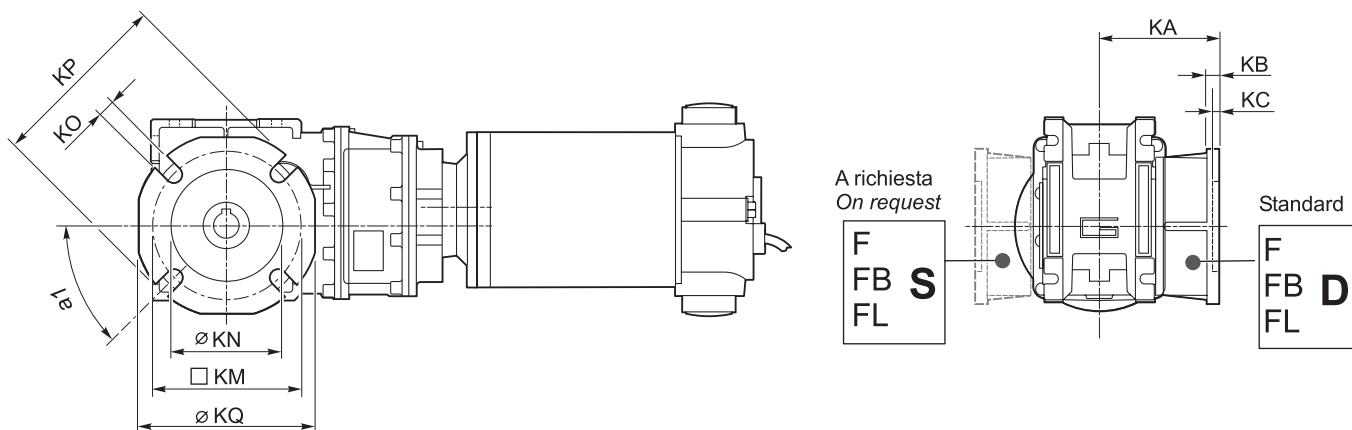
Dimensioni

Dimensions

ECMB600/402 U

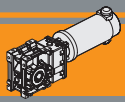


NDCMB.../ F... - ECMB.../... F... Flange uscita / Output flanges



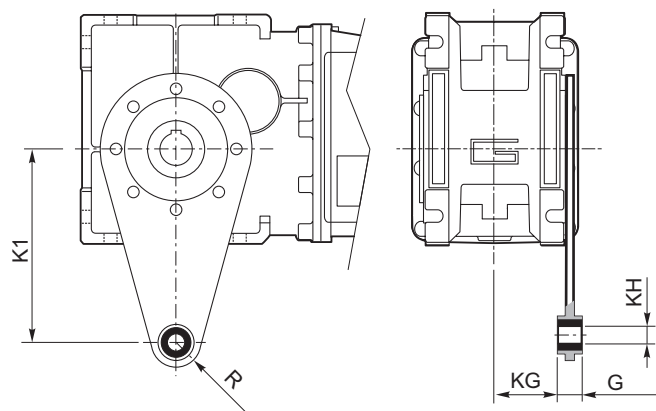
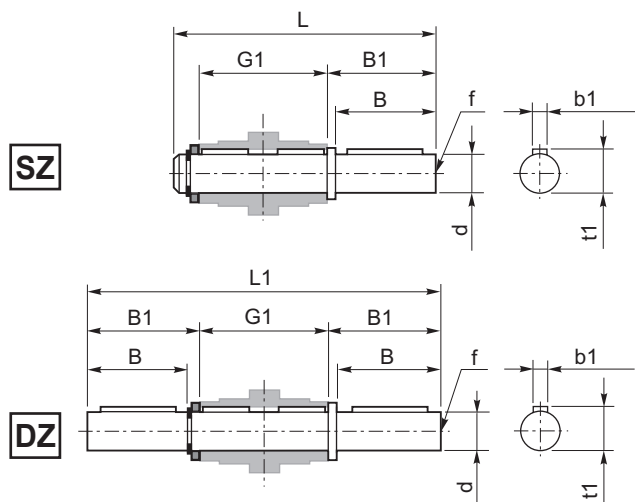
CMB	Flange uscita / Output flanges																										
	F					FL					FB																
	a ₁	KA	KB	KC	KM	KN H8	KO	KP	KQ	a ₁	KA	KB	KC	KM	KN H8	KO	KP	KQ	a ₁	KA	KB	KC	KM	KN H8	KO	KP	KQ
402	45°	67	7.5	4.5	80-95	60	9	110	95	45°	97	7.5	4.5	80-95	60	9	110	95	45°	80	8.5	5	115-125	95	9.5	140	112

DC



Accessori

Accessories



Albero lento / Output shaft

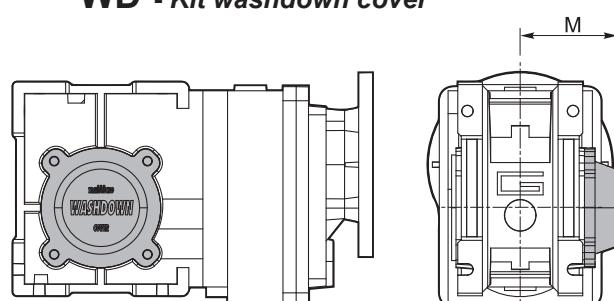
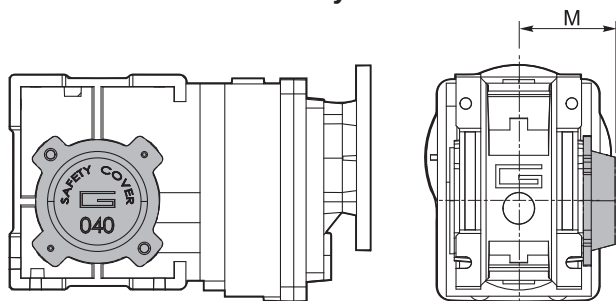
Braccio di reazione / Torque arm

CMB	d h7	B	B1	G1	L	L1	f	b1	t1
402	18	40	43	78	128	164	M6	6	20.5

CMB	K1	G	KG	KH	R
402	100	14	31	10	18

SC - Safety cover

WD - Kit washdown cover



CMB	M
402	54.5

CMB	M
402	55.5

 **TRANSTECNO SRL
HEADQUARTERS**

Company subject to the management
and coordination of INTERPUMP GROUP SPA
Via Caduti di Sabbiano, 11/D-E
40011 Anzola dell'Emilia (BO)
ITALY
T+39 051 64 25 811
F +39 051 73 49 43
sales@transtecno.com
www.transtecno.com

 **TRANSTECNO®**
the modular gearmotor

MEMBER OF INTERPUMP GROUP



 **HANGZHOU TRANSTECNO POWER
TRANSMISSIONS CO LTD**
No.4 Xiuyan Road Fengdu Industry Zone
Pingyao Town Yuhang District
Hangzhou City, Zhejiang Province
311115 - CHINA
T +86 571 86 92 02 60
F +86 571 86 92 18 10
info-china@transtecno.cn
www.transtecno.cn

 **MA TRANSTECNO S.A.P.I. DE C.V.**
Av. Mundial # 176, Parque Industrial
JM Apodaca, Nuevo León,
C.P. 66600 - MEXICO
T +52 8113340920
info@transtecno.com.mx
www.transtecno.com.mx

 **TRANSTECNO IBÉRICA
THE MODULAR GEARMOTOR, S.A.**
Carrer de la Ciència, 45
08840 Viladecans (Barcelona) - SPAIN
T +34 931 598 950
info@transtecno.es
www.transtecno.es

 **TRANSTECNO B.V.**
Siliciumweg 32
3812 SX Amersfoort - NETHERLANDS
T +31(0) 33 45 19 505
F +31(0) 33 45 19 506
info@transtecno.nl
www.transtecno.nl

 **TRANSTECNO AANDRIJFTECHNIEK B.V.**
Siliciumweg 32
3812 SX Amersfoort - NETHERLANDS
T +31 (0) 33 20 4 7 006
info@transtecnoaandrijftechnik.nl
www.transtecnoaandrijftechnik.nl

 **TRANSTECNO USA**
8 Creek Parkway,
Boothwyn PA 19061-8136 - UNITED STATES
T +1 (610) 4970154
F +1 (610) 497 6085

TRANSTECNO USA – WEST COAST BRANCH
14561 Fryelands Blvd SE
Monroe, WA 98272 - UNITED STATES
T +1 360-863-1300
F +1 360-863-1303
usaoffice@transtecno.com
www.transtecno.com

 **TRANSTECNO CANADA**
51 B Caldari Road Unit 10
Vaughan, ON L4K 4G3 - CANADA
T +1 905 761 0762
F +1 905 761 9265
canadaoffice@transtecno.com
www.transtecno.com

 **TRANSTECNO CHILE-PERU**
Av. Los Libertadores 41
Parque Industrial - Los Libertadores 16.500
Santiago, Colina - CHILE
T +56 2 29633870

Carretera Panamericana Sur KM 29.5,
Interior I-3, Z.I. Lurin - PERU
T +51 1 3546259 / + 51 1 3434231
chileoffice@transtecno.com
www.transtecno.com

 **TRANSTECNO INDIA**
#6A, Sipcot Industrial complex, Phase-1, Elasagiri Road
Hosur - 635126 Tamilnadu - INDIA
T +91 4344 274434
M +91 81443 88800

TRANSTECNO INDIA – NORTH BRANCH
Plot No: 3 A, Sector 2, IIE, Sidcul, Pantnagar
U.S. Nagar, Uttarakhand – 263153 - INDIA
indiaoffice@transtecno.com
www.transtecno.com

 **SALES OFFICE BRAZIL**
Rua Dr. Freire Alemão 155 / 402 - CEP. 90450-060
Auxiliadora Porto Alegre RS - BRAZIL
T +55 51 3251 5447
F +55 51 3251 5447
M +55 51 811 45 962
braziloffice@transtecno.com
www.transtecno.com.br

 **SALES OFFICE OCEANIA**
Unit 5, 12 Nyholt Drive, Yatala 4207
Queensland - AUSTRALIA
T +61 07 3800 0103
M +61 04 38060997
oceaniaoffice@transtecno.com
www.transtecno.com.au

 **SALES OFFICE SOUTH KOREA**
772-41, Bongdong-ro, Bongdong-eup, Wanju-goon
Chonbuk, 55313
SOUTH KOREA
T +82 70 8867 8897
F +82 504 199 2107
M +82 10 5094 2107
koreaoffice@transtecno.com
www.transtecno.com

www.minitecno.com
www.transtecno.com