

**MINI**   
**TECNO**  
**small** but strong

**CMM**

AC

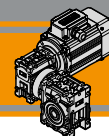
Motoriduttori CA combinati a vite senza fine  
AC Double reduction wormgearmotors



**MINI**   
**TECNO** brand of  
**TRANSTECNO**<sup>®</sup>



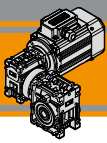




<b>Indice</b>	<b>Index</b>	<b>Pag. Page</b>
Caratteristiche tecniche	<i>Technical features</i>	<b>AF2</b>
Designazione	<i>Classification</i>	<b>AF2</b>
Simbologia	<i>Symbols</i>	<b>AF3</b>
Esecuzioni di montaggio	<i>Mounting executions</i>	<b>AF3</b>
Combinazioni rapporti	<i>Combination ratio</i>	<b>AF3</b>
Lubrificazione	<i>Lubrication</i>	<b>AF3</b>
Dati tecnici	<i>Technical data</i>	<b>AF4</b>
Motori applicabili	<i>Motor adapters</i>	<b>AF5</b>
Dimensioni	<i>Dimensions</i>	<b>AF6</b>
Accessori	<i>Accessories</i>	<b>AF10</b>
Opzioni	<i>Options</i>	<b>AF10</b>

Questa sezione annulla e sostituisce ogni precedente edizione o revisione. Qualora questa sezione non Vi sia giunta in distribuzione controllata, l'aggiornamento dei dati ivi contenuto non è assicurato. **In tal caso la versione più aggiornata è disponibile sul nostro sito internet [www.transtecno.com](http://www.transtecno.com)**

*This section replaces any previous edition and revision. If you obtained this catalogue other than through controlled distribution channels, the most up to date content is not guaranteed. In this case the latest version is available on our web site [www.transtecno.com](http://www.transtecno.com)*



**Caratteristiche tecniche**

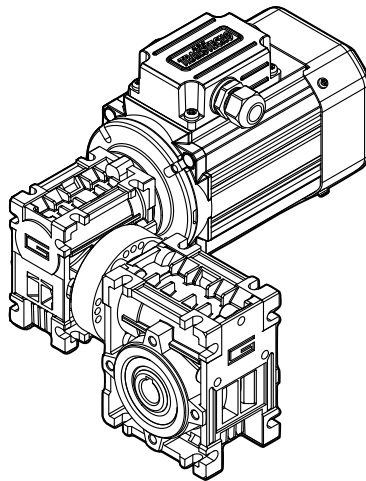
**Technical features**

Le caratteristiche principali dei motoriduttori CMM sono:

CMM gearmotors range has the following main features:

- Costruzione compatta
- Motorizzazioni in corrente alternata monofase e trifase
- Carcassa motore estrusa in alluminio anodizzato nero
- Carcasse dei riduttori in pressofusione di alluminio
- Motore elettrico AC con grado di protezione IP66
- Lubrificazione permanente con olio sintetico
- Disponibili sia nella versione ventilata TEFC (servizio S1) che non ventilata TENV (servizio S3)
- Protezioni termiche per le taglie 56 e 63
- SMT56 e SMT63 adatti al funzionamento con alimentazione da inverter

- Compact design
- AC single phase and three phase motors available
- Motor extruded aluminum housing black anodized
- Gearbox die-cast aluminum housing
- AC electric motor in IP66 protection Standard
- Permanent synthetic oil long-life lubrication
- Fan cooled TEFC (duty S1) and not ventilated TENV (duty S3) versions available
- Thermal protection for motor sizes 56 and 63
- SMT56 and SMT63 are suitable for running with inverter



**Designazione**

**Classification**

RIDUTTORE / GEARBOX										
CMM	030/040	FD	150	63	B5	SZDX	BRSX	90	US1	VS
Tipo Type	Grandezza Size	Versione Version	Rapporto Ratio	IEC 	Forma costruttiva Version	Albero di uscita Output shaft	Braccio di reazione Torque arm	Angolo Angle	Esecuzione di montaggio Mounting execution	Opzioni Options
	026/026 026/026 (D11) 026/026 (D14) 026/030 026/040  030/040	U F...	vedi tabelle see tables	56.. 63..	B5 B14	SZDX SZSX DZ	BRDX BRSX  *	0° 90° 180° 270°	UB1 UB2 US1 US2 UV1 UV2 UC1 UC2	VS1 VS2

\* NOTA: il braccio di reazione viene fornito smontato.  
NOTE: the torque arm will be supplied not assembled.

Versione Riduttore  
Gearbox Version

U    F...D    F...S

Albero di uscita  
Output shaft

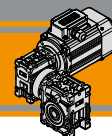
SZDX    SZSX    DZ

Braccio di reazione  
Torque arm

BRDX    BRSX

Angolo  
Angle

90°    90°  
180°    0°  
270°    270°



## Designazione

## Classification

SMT	63	2	4	B14	230-400 V	50 Hz	TEFC	T1
Tipo Type	Grandezza Size	Indicativo potenza Power coefficient	Poli Poles	Forma costruttiva Version	Tensione Voltage	Frequenza Frequency	Ventilazione Fan cooling	Pos. morsetteria Terminal box pos.
<b>SMT</b> trifase threephase	vedi tabelle see tables	<b>1-2-3-4-5</b>	<b>4</b>	<b>B14</b>	<b>230-400 V</b>	<b>50Hz</b> <b>60Hz</b>	<b>TEFC</b> <b>TENV</b>	<b>T1 (Std)</b> 

SMM	63	2	4	B14	230 V	50 Hz	TEFC	T1
Tipo Type	Grandezza Size	Indicativo potenza Power coefficient	Poli Poles	Forma costruttiva Version	Tensione Voltage	Frequenza Frequency	Ventilazione Fan cooling	Pos. morsetteria Terminal box pos.
<b>SMM</b> monofase singlephase	vedi tabelle see tables	<b>1-2-3-4</b>	<b>4</b>	<b>B14</b>	<b>230 V</b>	<b>50Hz</b>	<b>TEFC</b> <b>TENV</b>	<b>T1 (Std)</b> 

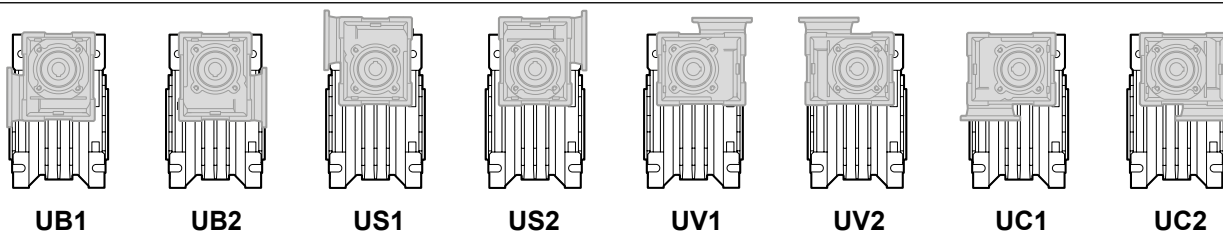
## Simbologia

## Symbols

$n_1$ [min <sup>-1</sup> ]	Velocità in ingresso / <i>Input speed</i>	$M_2$ [Nm]	Coppia in uscita in funzione di $P_1$ / <i>Output torque referred to <math>P_1</math></i>
$n_2$ [min <sup>-1</sup> ]	Velocità in uscita / <i>Output speed</i>	sf	Fattore di servizio / <i>Service factor</i>
i	Rapporto di riduzione / <i>Ratio</i>	$R_2$ [N]	Carico radiale ammissibile in uscita / <i>Permitted output radial load</i>
$P_1$ [kW]	Potenza in entrata / <i>Input power</i>	$A_2$ [N]	Carico assiale ammissibile in uscita / <i>Permitted output axial load</i>

## Esecuzioni di montaggio

## Mounting executions



## Combinazioni rapporti

## Combination ratio

CMM 026/026 - CMM 026/030 - CMM 026/040												
i (i <sub>1</sub> x i <sub>2</sub> )												
	150	225	300	450	600	900	1200	1500	1800	2400	3000	3600
i <sub>1</sub>	10	15	10	15	20	30	40	50	60	60	60	60
i <sub>2</sub>	15	15	30	30	30	30	30	30	30	40	50	60

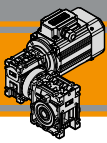
CMM 030/040														
i (i <sub>1</sub> x i <sub>2</sub> )														
	150	200	250	300	400	500	600	750	900	1200	1500	1800	2400	3000
i <sub>1</sub>	10	10	10	10	10	10	20	25	30	40	50	60	60	60
i <sub>2</sub>	15	20	25	30	40	50	30	30	30	30	30	30	40	50

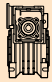

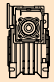

## Lubrificazione

## Lubrication

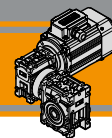
Tutti i motoriduttori nelle taglie 26, 30, 40 sono forniti completi di lubrificante sintetico viscosità 320, pertanto possono essere installati in qualunque posizione di montaggio e non necessitano di manutenzione.

*Permanent synthetic oil long-life lubrication (viscosity grade 320) makes it possible to use the gearmotors size 26, 30, 40 in all mounting positions; for this reason they can be installed in any assembly position and do not require maintenance.*

**CMM****Motoriduttori CA combinati a vite senza fine**  
**AC Double reduction wormgearmotors****Dati tecnici****Technical data**

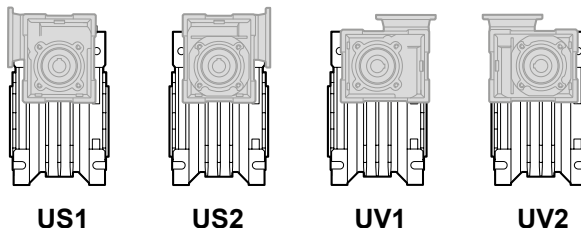
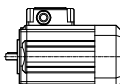
P <sub>1</sub> [kW]	n <sub>2</sub> [min <sup>-1</sup> ]	M <sub>2</sub> [Nm]	sf	i			P <sub>1</sub> [kW]	n <sub>2</sub> [min <sup>-1</sup> ]	M <sub>2</sub> [Nm]	sf	i		
<b>0.04</b>							<b>0.06</b>						
SMT5014	9.3	23	1.1	150	CMM	B14	SMT5024	9.3	36	2.4	150	CMM	B14
SMM5014	6.2	32	0.8	225	026/026	B14	SMM5024	7.0	46	1.6	200	030/040	B14
(1400 min <sup>-1</sup> )	4.7	34	0.8	300		B14	(1400 min <sup>-1</sup> )	5.6	55	1.2	250		
	3.1	34	0.8	450		B14		4.7	59	1.5	300		
	2.3	34	0.8	600		B14		3.5	72	1.0	400		
	1.6	34	0.8	900		B14		2.8	81	0.8	500		
	1.2	34	0.8	1200		B14		2.3	105	0.9	600		
	0.9	34	0.8	1500		B14		1.9	113	0.8	750		
	0.8	34	0.8	1800		B14		1.6	113	0.8	900		
	0.6	28	0.8	2400		B14							
	0.5	25	0.8	3000		B14							
	0.4	23	0.8	3600		B14							
	9.3	23	1.7	150	CMM	B14							
	6.2	32	1.2	225	026/030	B14							
	4.7	37	1.1	300		B14							
	3.1	50	0.8	450		B14							
	2.3	50	0.8	600		B14							
	1.6	50	0.8	900		B14							
	1.2	50	0.8	1200		B14							
	0.9	50	0.8	1500		B14							
	0.8	50	0.8	1800		B14							
	0.6	43	0.8	2400		B14							
	0.5	38	0.8	3000		B14							
	0.4	34	0.8	3600		B14							
	9.3	23	3.7	150	CMM	B14							
	6.2	33	2.6	225	026/040	B14							
	4.7	39	2.3	300		B14							
	3.1	55	1.6	450		B14							
	2.3	69	1.3	600		B14							
	1.6	92	1.0	900		B14							
	1.2	113	0.8	1200		B14							
	0.9	113	0.8	1500		B14							
	0.8	113	0.8	1800		B14							
	0.6	93	0.8	2400		B14							
	0.5	85	0.8	3000		B14							
	0.4	78	0.8	3600		B14							
	9.3	24	3.7	150	CMM	B14							
	7.0	31	2.4	200	030/040	B14							
	5.6	37	1.8	250		B14							
	4.7	39	2.3	300		B14							
	3.5	48	1.6	400		B14							
	2.8	54	1.3	500		B14							
	2.3	70	1.3	600		B14							
	1.9	84	1.1	750		B14							
	1.6	94	1.0	900		B14							
	1.2	113	0.8	1200		B14							
	0.9	113	0.8	1500		B14							
	0.8	113	0.8	1800		B14							
	0.6	93	0.8	2400		B14							
	0.5	85	0.8	3000		B14							
	9.3	33	0.8	150	CMM	B14							
SMT5024	6.2	33	0.8	225	026/026	B14							
SMM5024													
(1400 min <sup>-1</sup> )	9.3	34	1.1	150	CMM	B14							
	6.2	48	0.8	225	026/030	B14							
	4.7	50	0.8	300		B14							
	9.3	35	2.5	150	CMM	B14							
	6.2	50	1.8	225	026/040	B14							
	4.7	58	1.5	300		B14							
	3.1	82	1.1	450		B14							
	2.3	104	0.9	600		B14							
	1.6	113	0.8	900		B14							
	9.3	109	0.8	150	CMM	B14							
SMT5654	6.2	109	0.8	225	030/040	B14							
SMT6334													
SMM6334													
(1400 min <sup>-1</sup> )	9.3	107	0.8	150	CMM	B14							
	7.0	93	0.8	225	030/040	B14							
	9.3	105	0.8	150	CMM	B14							
SMT5644	6.2	109	0.8	225	026/040	B14							
SMM5644													
(1400 min <sup>-1</sup> )	9.3	107	0.8	150	CMM	B14							
	7.0	93	0.8	200	030/040	B14							
	9.3	105	0.8	150	CMM	B14							
SMT6324	7.0	93	0.8	225	030/040	B14							
SMM6334													
(1400 min <sup>-1</sup> )	9.3	107	0.8	150	CMM	B14							
	7.0	93	0.8	225	030/040	B14							
	9.3	109	0.8	150	CMM	B14							
SMT5654	6.2	109	0.8	225	030/040	B14							
SMT6334													
SMM6334													
(1400 min <sup>-1</sup> )	9.3	109	0.8	150	CMM	B14							

**Nota:** Verificare sempre che la coppia M2 utilizzata non ecceda il valore indicato nelle caselle in grigio**Note:** Please check that the output torque M2 does not exceed the value into the grey areas



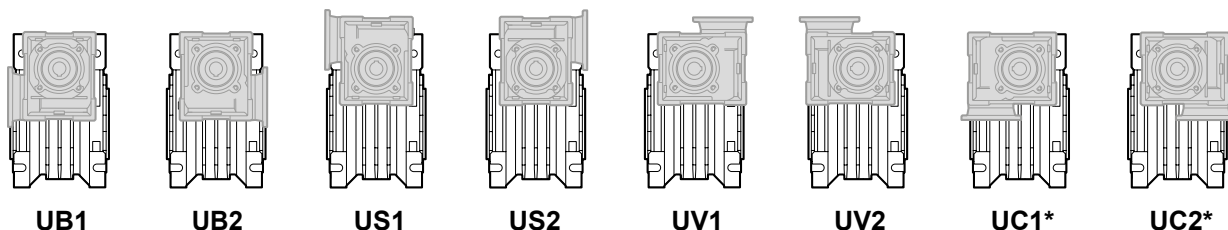
Motori applicabili

Motor adapters

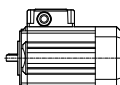



		SMT		SMM	
		5014	5624	5014	5624
		5024	5634	5024	5634
		5034	5644	5034	5644
		5044	5654		
<b>CM</b>	<b>026/026</b>	150 - 3600		150 - 3600	

150 - 3600 Rapporti di riduzione i / Ratio i

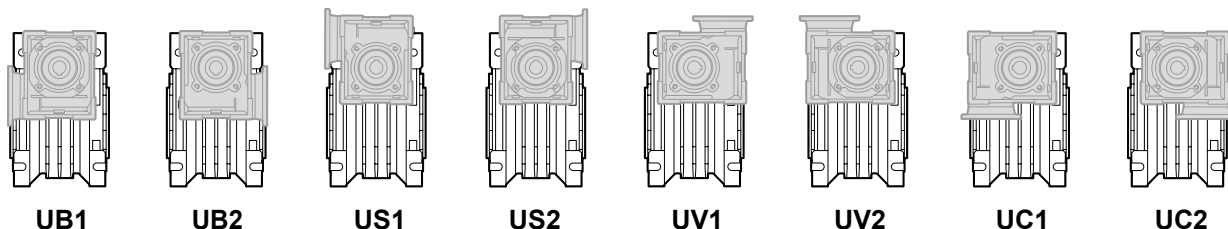
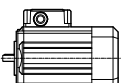


\*: Solo / only SMT 50 - SMM50



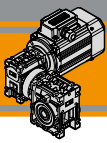
		SMT		SMM	
		5014	5624	5014	5624
		5024	5634	5024	5634
		5034	5644	5034	5644
		5044	5654		
<b>CM</b>	<b>026/030</b>	150 - 3600		150 - 3600	
	<b>026/040</b>				

150 - 3600 Rapporti di riduzione i / Ratio i

		SMT			SMM		
		5014	5624	6324	5014	5624	6314
		5024	5634	6334	5024	5634	6324
		5034	5644	6344	5034	5644	6334
		5044	5654				
<b>CM</b>	<b>030/040</b>	75 - 3600		75-1500	75 - 3600		75-1500

75 - 3600 Rapporti di riduzione i / Ratio i



**CMM**

Motoriduttori CA combinati a vite senza fine  
AC Double reduction wormgearmotors



**Dimensioni**

**Dimensions**

CMM..U - CMM..F...																	
	A	C	D <sub>H8</sub>	E	F	G	G1	H	H1	I	I1	K	L	M	N <sub>h8</sub>	N1	N2
026/026 (D11)			11														
026/026	45	70	12	83	22	47.5	50	35	34	26	26	34	42	55	45	22.5	21
026/026 (D14)			14														
026/030	54	80	14	97	32	47.5	63	40	34	30	26	44	56	65	55	29	21
026/040	70	100	18	121.5	43	47.5	78	50	34	40	26	60	71	75	60	36.5	21

CMM..U - CMM..F...														
	O	P	Q	R	R1	S	T	V	Z	KE	a	b	t	Kg
026/026 (D11)												4	12.8	
026/026	6	—	37	49	49	5	15	21	76	7	—	4	13.8	1.6
026/026 (D14)												5	16.2	
026/030	6.5	75	44	57	49	5.5	22	27	81	M6x10(n.4)	90°	5	16.3	2.4
026/040	6.5	87	55	71.5	49	6.5	26	35	91.5	M6x8(n.4)	45°	6	20.8	3.5

	CMM..F						CMM..F28						CMM..F30						CMM..F30S <sup>(1)</sup>														
	a1	KA	KB	KC	KM	KN <sub>H8</sub>	KO	KP	KQ	KA	KB	KC	KM	KN <sub>H8</sub>	KO	KP	KQ	KA	KB	KC	KM	KN <sub>H8</sub>	KO	KP	KQ	KA	KB	KC	KM	KN <sub>H8</sub>	KO	KP	KQ
026 (D11)	45°	45	6	4.5	55-69	40	6.5 (n.4)	75	70	44	6.5	5	56-64	40	6.5	70	60	48	6.5	5	68	50	6.5	80	70	50	8.5	7	68	50	6.5	80	70
026																																	
026 (D14)																																	

(1): F30S eseguita con F30 e distanziale di spessore 2 mm / F30S made with F30 and spacer with 2mm thickness

	CMM..F30C						CMM..F30SC <sup>(2)</sup>						CMM..F100													
	a1	KA	KB	KC	KM	KN <sub>H8</sub>	KO	KP	KQ	KA	KB	KC	KM	KN <sub>H8</sub>	KO	KP	KQ	KA	KB	KC*	KM	KN <sub>H7</sub>	KO	KP	KQ	
026 (D11)																										
026	-	48	6.5	7	68	50	6.5	80	70	50	8.5	7	68	50	6.5	80	70	51.5	8	2*	86	45	6.5	100	-	
026 (D14)																										

(2): F30SC eseguita con F30C e distanziale di spessore 2 mm / F30SC made with F30C and spacer with 2mm thickness

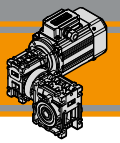
	CMM..F						CMM..FB						CMM..FL												
	a1	KA	KB	KC	KM	KN <sub>H8</sub>	KO	KP	KQ	KA	KB	KC	KM	KN <sub>H8</sub>	KO	KP	KQ	KA	KB	KC	KM	KN <sub>H8</sub>	KO	KP	KQ
026/030	45°	54.5	6	4	68	50	6.5(n.4)	80	70								—								
026/040	45°	67	7.5	4.5	80-95	60	9(n.4)	110	95	80	8.5	5	115-125	95	9.5(n.4)	140	112	97	7.5	4.5	80-95	60	9(n.4)	110	95

SMT	BFC	BNV	LFC	LNV
5014			135.5	108.5
5024	□ 85	□ 80	150.5	123.5
5034			175.5	148.5
5044			200.5	173.5
5624			141	117
5634	□ 93	□ 87	151	127
5644			186	162
5654			206	182

SMM	BFC	BNV	LFC	LNV
5014			150.5	123.5
5024	□ 85	□ 80	175.5	148.5
5034			200.5	173.5
5624			151	127
5634	□ 93	□ 87	186	162
5644			206	182

Nota: il condensatore sarà fornito a corredo  
Note: the capacitor will be supplied separately





Dimensioni

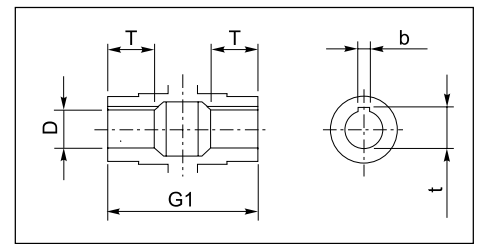
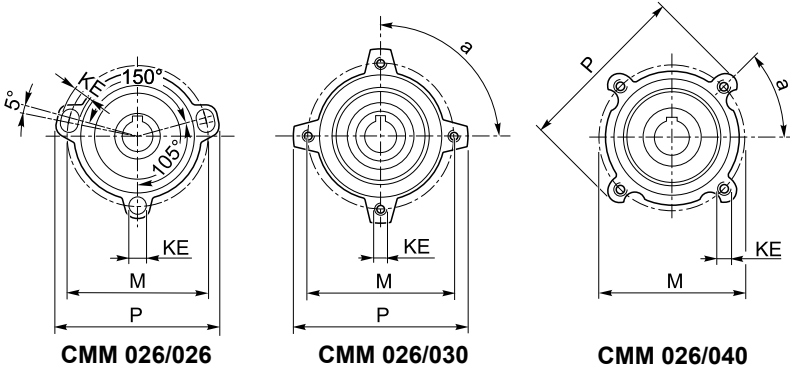
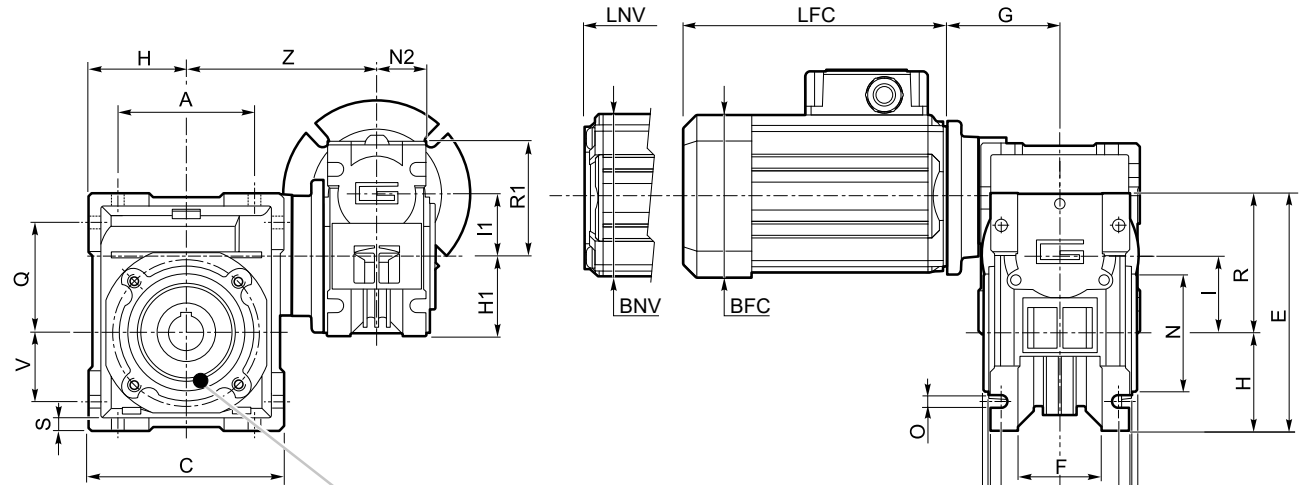
Dimensions

CMM 026/... U

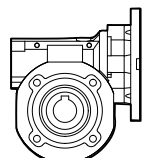
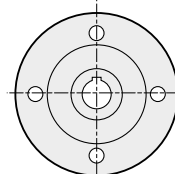
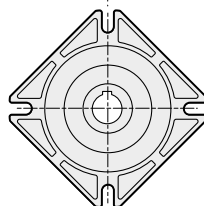
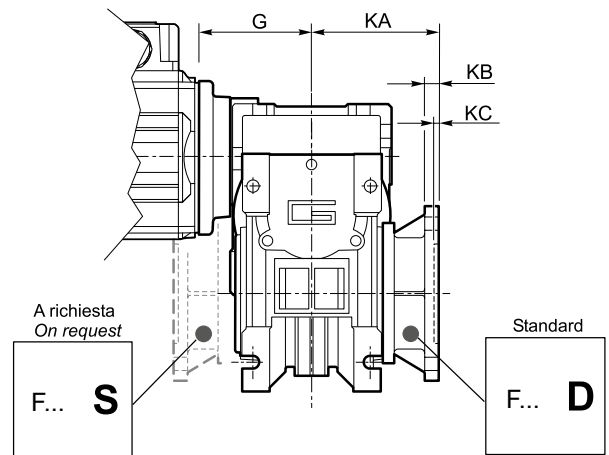
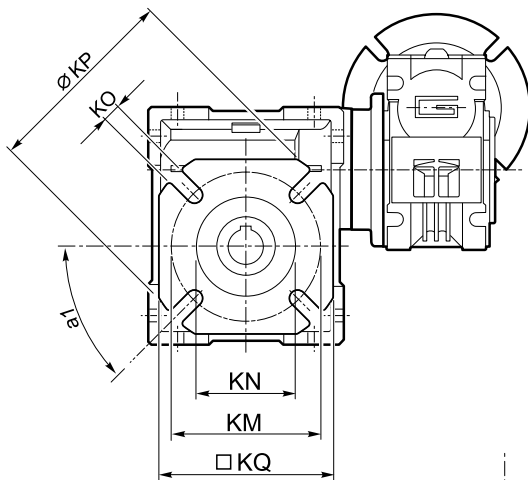
S3 <sup>servizio</sup> <sub>duty</sub> 30%

SMT...TENV  
SMM... TENV

SMT...TEFC  
SMM... TEFC



Albero lento cavo / Hollow output shaft

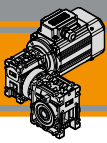


CMM026/026.. F  
CMM026/026.. F28  
CMM026/026.. F30  
CMM026/026.. F30S  
CMM026/030.. F..  
CMM026/040.. F..

CMM026/026.. F30C  
CMM026/026.. F30SC

CMM026/026.. F100

CL026  
CL030  
CL040



**Dimensioni**

**Dimensions**

CMM.. - CMM..F - CMM..FB - CMM..FL																	
	A	C	D <sub>H8</sub>	E	F	G	G1	H	H1	I	I1	K	L	M	N <sub>H8</sub>	N1	N2
030/040	70	100	18	121.5	43	55	78	50	40	40	30	60	71	75	60	36.5	29

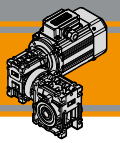
CMM.. - CMM..F - CMM..FB - CMM..FL															
	O	P	Q	R	R1	S	T	V	Z	KE	a	b	t	Kg	
030/040	6.5	87	55	71.5	57	6.5	26	35	122	M6x8(n.4)	45°	6	20.8 (21.8)	3.9	

	CMM..F								CMM..FB								CMM..FL								
	a1	KA	KB	KC	KM	KN <sub>H8</sub>	KO	KP	KQ	KA	KB	KC	KM	KN <sub>H8</sub>	KO	KP	KQ	KA	KB	KC	KM	KN <sub>H8</sub>	KO	KP	KQ
030/040	45°	67	7.5	4	80-95	60	9(n.4)	110	95	80	8.5	5	115-125	95	9.5(n.4)	140	112	97	7.5	4.5	80-95	60	9(n.4)	110	95

SMT	BFC	BNV	LFC	LNv
5014	□ 85	□ 80	135.5	108.5
5024			150.5	123.5
5034			175.5	148.5
5044			200.5	173.5
5624	□ 93	□ 87	141	117
5634			151	127
5644			186	162
5654			206	182
6324	□ 105	□ 97	165.5	138.5
6334			180.5	153.5
6344			205.5	178.5

SMM	BFC	BNV	LFC	LNv
5014	□ 85	□ 80	150.5	123.5
5024			175.5	148.5
5034			200.5	173.5
5624			151	127
5634	□ 93	□ 87	186	162
5644			206	182
6324			180.5	153.5
6334	□ 105	□ 97	205.5	178.5

**Nota:** il condensatore sarà fornito a corredo  
**Note:** the capacitor will be supplied separately



Dimensioni

Dimensions

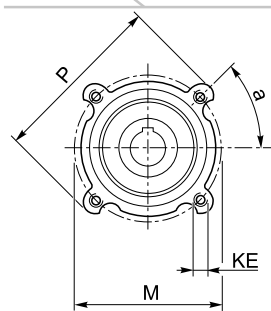
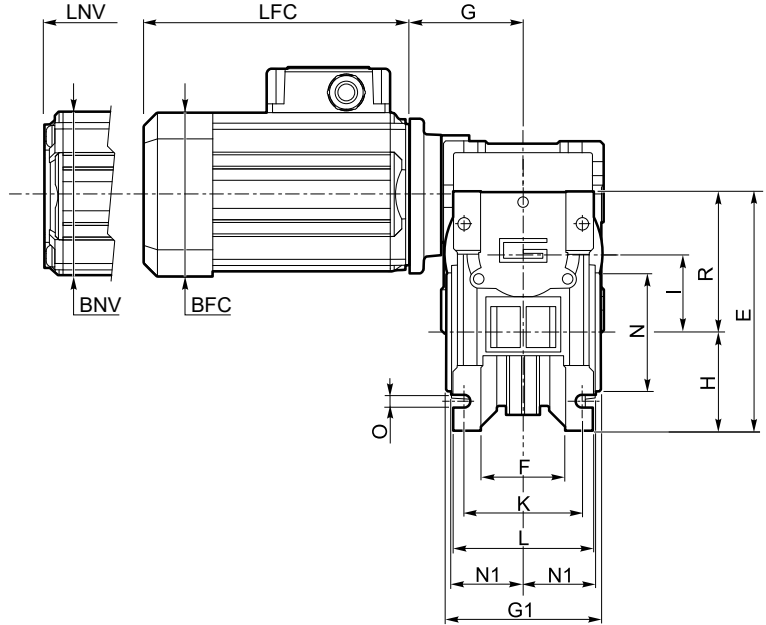
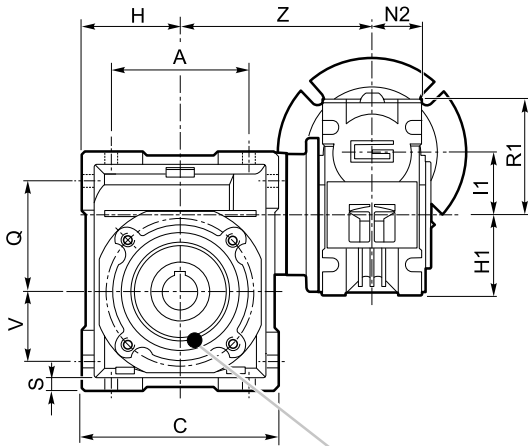
CMM 030/040 U

S3 servizio  
duty

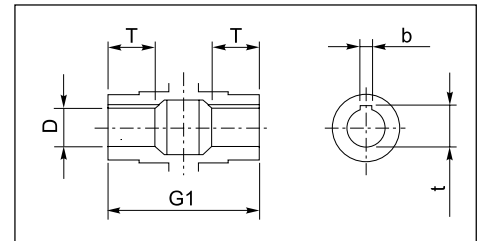
30%

SMT...TENV  
SMM... TENV

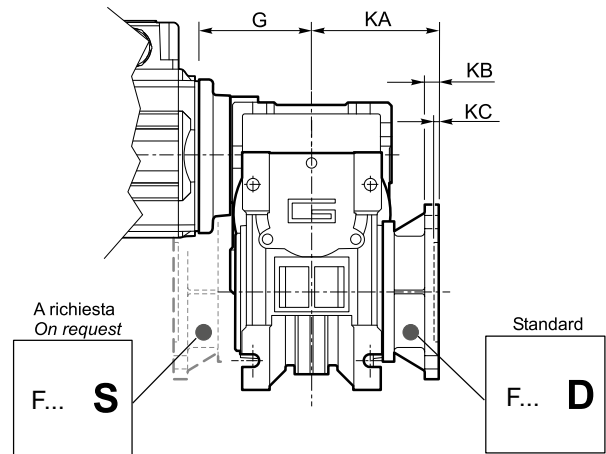
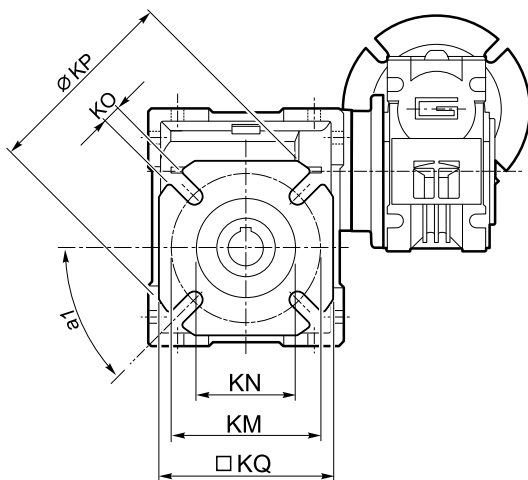
SMT...TEFC  
SMM... TEFC



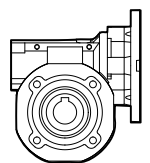
CMM 030/040



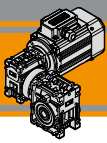
Albero lento cavo / Hollow output shaft



II 9  
II 10



CL030  
CL040

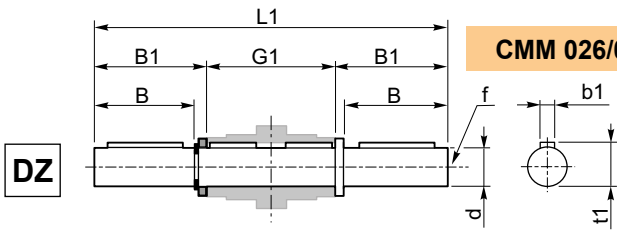


**Accessori**

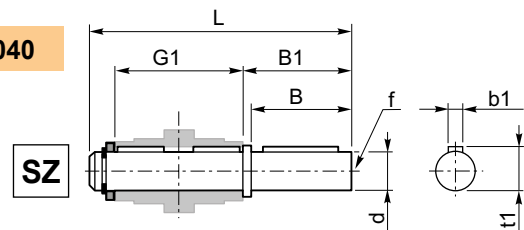
**Accessories**

**Albero lento semplice e doppio**

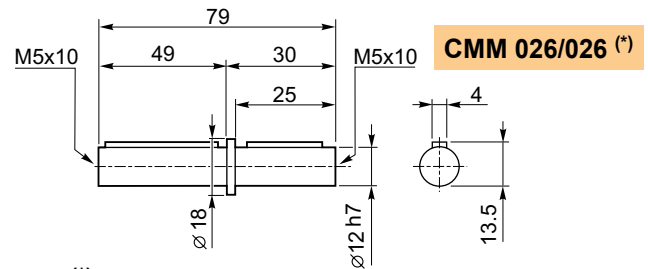
**Single and double output shaft**



**CMM 026/030 - CMM 030/040**



CMM	d <sub>h7</sub>	B	B1	G1	L	L1	f	b1	t1
026/030	14	30	32.5	63	102	128	M6	5	16
026/040 030/040	18	40	43	78	128	164	M6	6	20.5



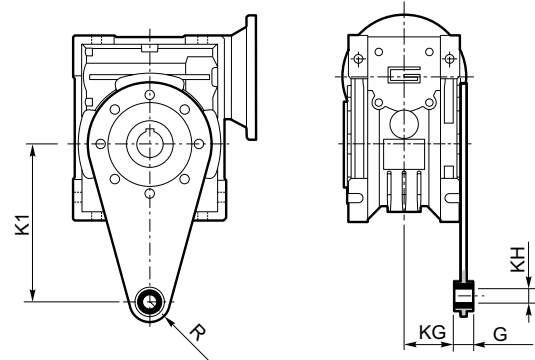
**CMM 026/026 (\*)**

(\*)  
**Nota:** disponibile solo per cavo uscita Ø12  
**Note:** available for output hollow shaft Ø12 only

**Braccio di reazione**

**Torque arm**

CMM	K1	G	KG	KH	R
026/030	85	14	23	8	15
026/040 030/040	100	14	31	10	18

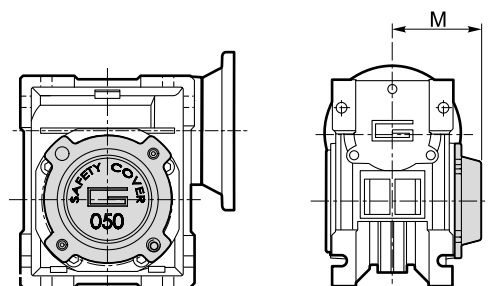
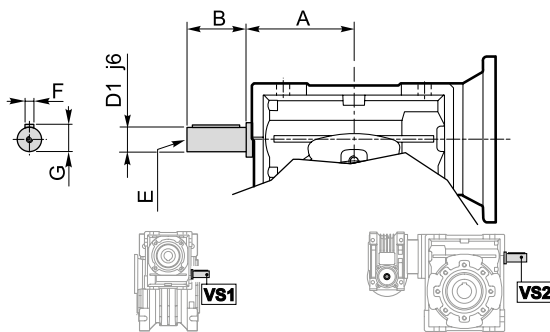


**Opzioni**

**Options**

**VS1 - VS2 - Vite sporgente / Extended input shaft**

**SC - Safety cover**



CMM	VS1						VS2					
	A	B	D <sub>1</sub> j6	E	F	G	A	B	D <sub>1</sub> j6	E	F	G
026/030	—	—	—	—	—	—	45	20	9	M4	3	10.2
026/040	—	—	—	—	—	—	53	23	11	M5	4	12.5
030/040	45	20	9	M4	3	10.2	53	23	11	M5	4	12.5

M	CM	
	30	40
	47	54.5

 Costruito su richiesta  
Built on request

**MA TRANSTECNO S.A.P.I. DE C.V.**

Av. Mundial # 176, Parque Industrial  
JM Apodaca, Nuevo León,  
C.P. 66600  
MÉXICO  
T +52 8113340920  
info@transtecno.com.mx  
www.transtecno.com.mx

**TRANSTECNO SRL**

Via Caduti di Sabbiuno, 11/D-E  
40011 Anzola dell'Emilia (BO)  
ITALY  
T+39 051 64 25 811  
F +39 051 73 49 43  
sales@transtecno.com  
www.transtecno.com

**HANGZHOU TRANSTECNO POWER TRANSMISSIONS CO LTD**

No.4 Xiuyan Road Fengdu Industry Zone  
Pingyao Town Yuhang District  
Hangzhou City, Zhejiang Province  
311115 – CHINA  
T +86 571 86 92 02 60  
F +86 571 86 92 18 10  
info-china@transtecno.com  
www.transtecno.cn

**TRANSTECNO U.S.A. LLC**

5440 S.W. 156th Place Miami,  
FL 33185 - USA  
Tel: +1 (305) 220-4423  
Fax: +1 (305) 220-5945  
usaoffice@transtecno.com

**TRANSTECNO B.V.**

Ind. terrein Wieken/Vinkenhoef  
De Stuwdam,43  
3815 KM Amersfoort - NETHERLANDS  
Tel: +31(0) 33 45 19 505  
Fax: +31(0) 33 45 19 506  
info@transtecno.nl  
www.transtecno.nl

**SALES OFFICE INDIA**

A/10, Anagha, S.N. Road, Mulund (W) Mumbai  
400080 - INDIA  
Tel: +91 9820614698  
Fax-Italy: +39 051 73 49 43  
indiaoffice@transtecno.com

**SALES OFFICE BRAZIL**

Rua Dr. Freire Alemão 155 / 402 - CEP. 90450-060  
Auxiliadora Porto Alegre RS - BRAZIL  
Tel: +55 51 3251 5447  
Fax: +55 51 3251 5447  
Mobile: +55 51 811 45 962  
braziloffice@transtecno.com  
www.transtecno.com.br

**TRANSTECNO AANDRIJFTECHNIEK B.V.**

De Stuwdam 43  
3815 KM Amersfoort - NETHERLANDS  
Tel: +31 (0) 33 20 4 7 006  
info@transtecnoaandrijftechniek.nl  
www.transtecnoaandrijftechniek.nl

**SALES OFFICE SOUTH KOREA**

D-304 Songdo BRC Smart Valley 30, Songdomirae-ro,  
Yeonsu-gu, Incheon, 406-840 - KOREA  
Tel: +82 70 8288 2107  
Fax: +82 32 815 2107  
Mobile: +82 10 5094 2107  
koreaoffice@transtecno.com

**TRANSTECNO IBÉRICA****THE MODULAR GEARMOTOR, S.A.**

C/Enginy, 2 Nave 6 - 08850 Gavà (Barcelona) - SPAIN  
Tel: +34 931 598 950  
info@transtecno.es  
www.transtecno.es

**SALES OFFICE OCEANIA**

44 Northview drive, Sunshine west 3020  
Victoria - AUSTRALIA  
Ph +61 03 9312 4722  
Fax +61 03 9312 4714  
Mobile: +61 0438060997  
oceaniaoffice@transtecno.com  
www.transtecno.com.au

**SALES OFFICE FRANCE**

Tel: +33 (0) 6 85 12 09 87  
Fax-Italy: +39 051 73 49 43  
franceoffice@transtecno.com  
www.transtecno.fr



www.transtecno.com