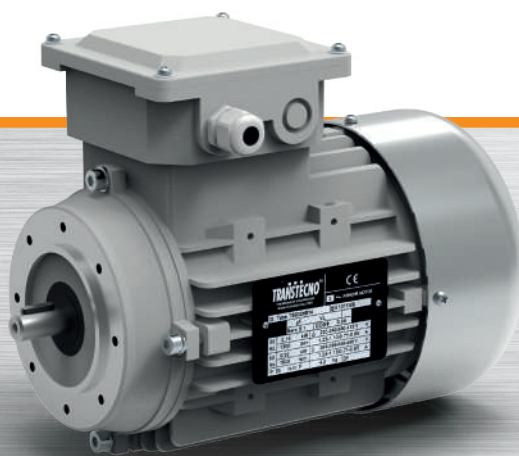
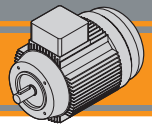




AC 交流异步电机
AC asynchronous electric motors

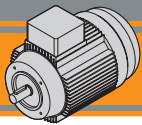




索引	Index	页码 Page
技术特征	<i>Technical characteristics</i>	K2
选型	<i>Classification</i>	K2
型式	<i>Versions</i>	K2
代号和公式说明	<i>Symbols and formulas</i>	K3
技术参数	<i>Technical data</i>	K3
技术参数: 电机尺寸	<i>Technical data: motor dimensions</i>	K4
IEC工作制	<i>IEC duty services</i>	K6
绝缘等级	<i>Thermal insulation class</i>	K6
TS - 60 Hz电源	<i>TS Series - 60 Hz line power supply</i>	K7
出线螺套尺寸	<i>Cable glands data</i>	K7
接线图	<i>Connection diagram</i>	K7
铭牌	<i>Nameplate</i>	K7

该目录为最新版本,可替代以往的任何版本及修订。如果您是通过非正式渠道取得,不能保证是最新内容,可在本公司网站上查阅
www.transtecno.com

This section replaces any previous edition and revision. If you obtained this catalogue other than through controlled distribution channels, the most up to date content is not guaranteed. In this case the latest version is available on our web site www.transtecno.com



TS AC交流电机

AC Electric motors

技术特征

Technical characteristics

所有TS系列电机均采用风扇冷却，并采用B5、B14型铝制外壳。

All TS series motors are fan cooled and made with an aluminium frame in version B5, B14.

TS系列包括230/400 Vac 50 Hz 和275/480 Vac 60 Hz 的三相4极电机，其功率范围从0.09 kw到2.2 kw。

TS range includes induction three phase 4 poles motors 230/400 Vac at 50 Hz and 275/480 Vac at 60 Hz, it covers power sizes from 0.09 kW up to 2.2 kW.

主要特征有：

Standard features are:

- F级绝缘等级
- IP55防护等级
- 适用环境温度：-20 °C ÷ +40 °C.

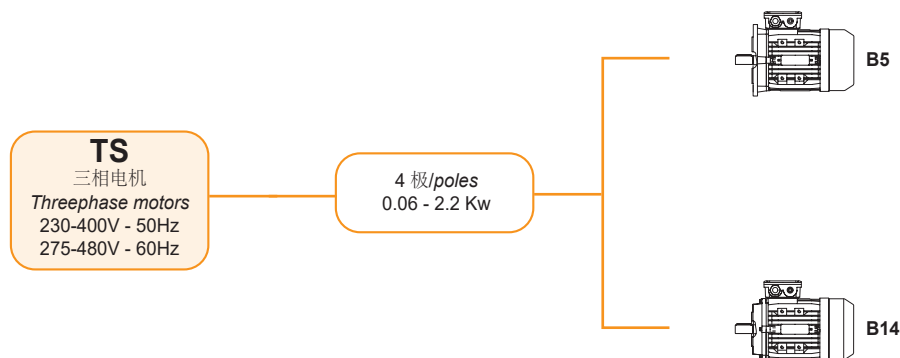
- Class F thermal insulation
- IP55 enclosure protection
- Ambient temperature: -20 °C ÷ +40 °C.

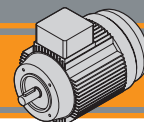
选型

三相电机 / THREE PHASE MOTOR								
TS	63	2	4	0.18	B5	3 ph	230-400 V	50 Hz
类型 Type	型号 Size	功率等级 Power coefficient	极 Poles	功率 Power	法兰型号 Version	相 Phases	电压 Voltage	频率 Frequency
TS 三相 threephase	见表格 see tables	1-2-3-S L1-L2	4	0.09 kW ... 2.2 kW	B5 B14	3 ph	230-400 V 275-480 V	50Hz 60Hz

法兰型号

Versions





代号和公式说明

Symbols and formulas

P_n	[kW]	额定功率	Rated power
I_n	[A]	额定电流 (400V)	Rated current (at 400V)
M_n	[Nm]	额定扭矩	Rated torque
n_n	[rpm]	额定转速	Rated speed
LR	[dB]	噪音等级	Noise Level
M_s / M_n		启动扭矩/额定扭矩	Ratio start torque / rated torque
M_k / M_n		最大扭矩/额定扭矩	Ratio max torque / rated torque
M_{sel} / M_n		堵转扭矩/额定扭矩	Ratio saddle torque / rated torque
I_s / I_n		启动电流 / 额定电流	Ratio start current / rated current
$\cos\varphi$		额定扭矩负载下的功率因素	Power factor at rated torque load
η		额定扭矩负载下的效率	Efficiency at rated torque load
功率 Power	[HP]	功率 [kW] x 1.34 (about)	Power [kW] x 1.34 (about)
输出功率 P_n P_n output power	[kW]	吸收功率 x η	Absorbed power x η
吸收功率 Absorbed power	[kW]	$\frac{\sqrt{3} \times I \times PF}{1000}$ (单相) $\frac{\sqrt{3} \times I \times \sqrt{3} \times PF}{1000}$ (三相)	$\frac{\sqrt{3} \times I \times PF}{1000}$ (singlephase) $\frac{\sqrt{3} \times I \times \sqrt{3} \times PF}{1000}$ (threephase)
I_n (230 V)		I_n (400 V) x $\sqrt{3}$	I_n (400 V) x $\sqrt{3}$

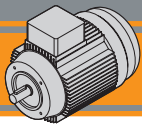
技术参数

Technical data

TS 三相电机 / TS Three phase motors

(230-400 V / 50 Hz - 1400 min⁻¹) 极 / poles 4

TS	P_n [kW]	M_n [Nm]	n_n [min ⁻¹]	I_n (400V) [A]	η %	$\cos\varphi$	M_s/M_n	I_s/I_n	M_k/M_n	M_{sel}/M_n	LR [dB]	质量 Mass [Kg]	工作制 Duty
562-4	0.09	0.63	1360	0.45	52	0.59	2.3	4	2.4	2	50	3.2	S3 70%
631-4	0.12	0.84	1360	0.55	52	0.64	2.2	4	2.4	2	52	3.7	
632-4	0.18	1.31	1310	0.70	57	0.65	2.2	4	2.4	2	52	4.2	
633-4	0.25	1.78	1340	0.91	60	0.66	2.2	4	2.2	2	54	5.0	
711-4	0.25	1.77	1350	0.84	60	0.72	2.2	6	2.4	1.7	55	5.0	
712-4	0.37	2.58	1370	1.11	65	0.74	2.2	6	2.4	1.7	55	5.8	
713-4	0.55	3.80	1380	1.60	66	0.75	2.2	6	2.4	1.7	57	6.5	
714-4	0.75	5.15	1390	2.20	71.3	0.69	2.7	4.2	2.7	2.4	57	7.7	
801-4	0.55	3.83	1370	1.58	67	0.75	2.2	6	2.4	1.7	58	8.1	
802-4	0.75	5.19	1380	1.93	72	0.78	2.2	6	2.4	1.6	58	9.1	
803-4	1.1	7.55	1390	2.67	76.2	0.78	2.2	6	2.4	1.6	60	11.0	
90S-4	1.1	7.50	1400	2.64	76.2	0.79	2.2	6	2.4	1.6	61	11.7	
90L1-4	1.5	10.2	1400	3.45	78.5	0.8	2.2	6	2.4	1.6	61	14.4	
90L2-4	2.2	15.0	1400	4.90	81	0.8	2.2	7	2.4	1.5	63	17.6	
100L1-4	2.2	14.8	1420	4.84	81	0.81	2.2	7	2.3	1.5	64	19.2	



TS 系列三相电机尺寸

B5

TS Series three phase motor dimensions

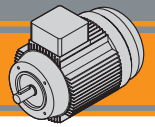
TS	轴 / Shaft					B5											
	D	E	DH	GA	F	P	M	N	S	T	AC	AD	AF	KK	L	LL	V
56	9	20	M3	10.2	3	120	100	80	7	3	117	100	88	1-M16x1.5	196	88	14
63	11	23	M4	12.5	4	140	115	95	10	3	130	108	94	1-M16x1.5	220	94	14
71 1/2 (3/4)	14	30	M5	16	5	160	130	110	10	3.5	147	115	94	1-M20x1.5	241 (255)	94	20
80	19	40	M6	21.5	6	200	165	130	12	3.5	163	133	105	1-M20x1.5	290	105	27
90S	24	50	M8	27	8	200	165	130	12	3.5	183	139	105	1-M20x1.5	312	105	30
90L1	24	50	M8	27	8	200	165	130	12	3.5	183	139	105	1-M20x1.5	337	105	30
100L 1/2	28	60	M10	31	8	250	215	180	15	4	205	152	105	2-M20x1.5	369	105	26

TS 系列三相电机尺寸

B14

TS Series three phase motor dimensions

TS	轴 / Shaft					B14											
	D	E	DH	GA	F	P	M	N	S	T	AC	AD	AF	KK	L	LL	V
56	9	20	M3	10.2	3	80	65	50	M5	2.5	117	100	88	1-M16x1.5	196	88	14
63	11	23	M4	12.5	4	90	75	60	M5	2.5	130	108	94	1-M16x1.5	220	94	14
71 1/2 (3/4)	14	30	M5	16	5	105	85	70	M6	2.5	147	115	94	1-M20x1.5	241 (255)	94	20
80	19	40	M6	21.5	6	120	100	80	M6	3	163	133	105	1-M20x1.5	290	105	27
90S	24	50	M8	27	8	140	115	95	M8	3	183	139	105	1-M20x1.5	312	105	30
90L 1/2	24	50	M8	27	8	140	115	95	M8	3	183	139	105	1-M20x1.5	337 / 367	105	30
100L 1	28	60	M10	31	8	160	130	110	M8	3.5	205	152	105	2-M20x1.5	369	105	26



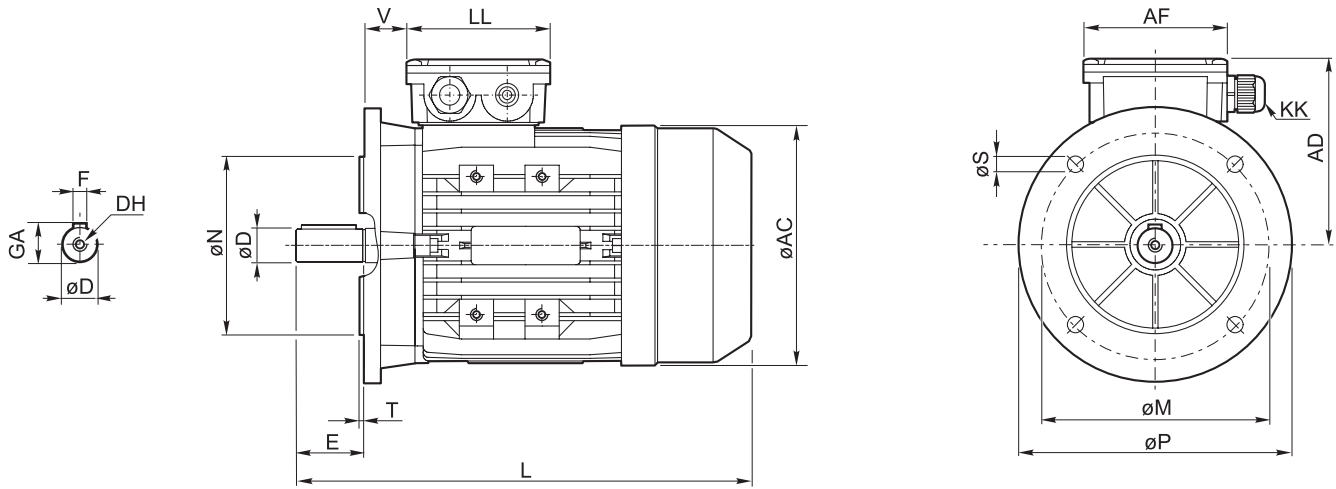
技术参数：电机尺寸

Technical data: motor dimensions

TS 系列三相电机尺寸

B5

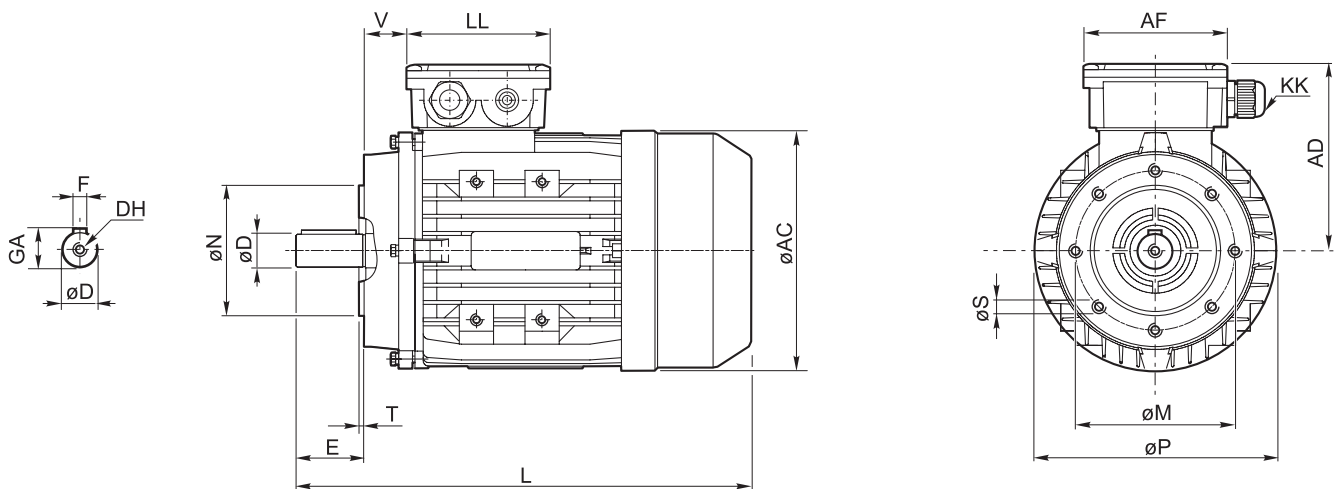
TS Series three phase motor dimensions

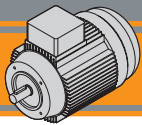


TS 系列三相电机尺寸

B14

TS Series three phase motor dimensions





IEC工作制

IEC duty cycles

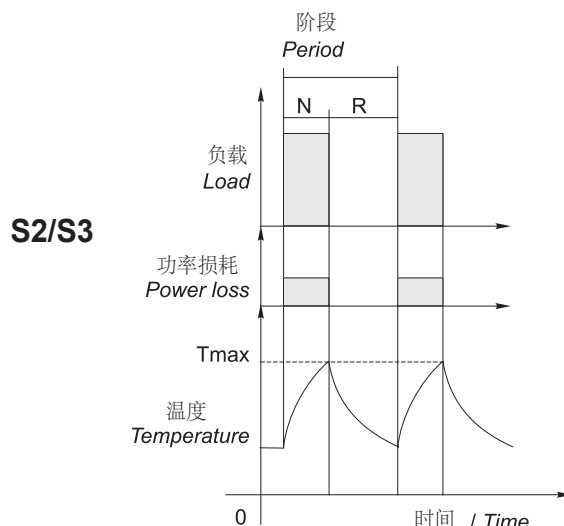
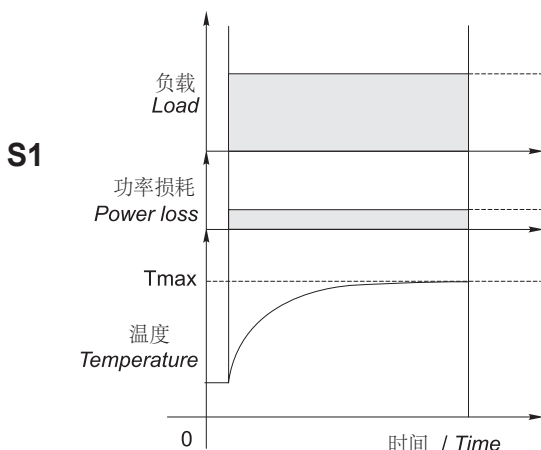
电机的占空比表示其使用和运行周期。

The duty cycle of a motor indicates its use and running cycle.

最常见的占空比图

Most common duty cycles diagram

N = 运行 / run
R = 休息 / rest



注释：同一台电机可在各工作制条件下运行，限制因素为内部温度不得超过电机绝缘等级规定的Tmax。

NOTE: The same motor can run under all duty services, limitation is due to internal temperature that must not override Tmax stated by motor thermal class.

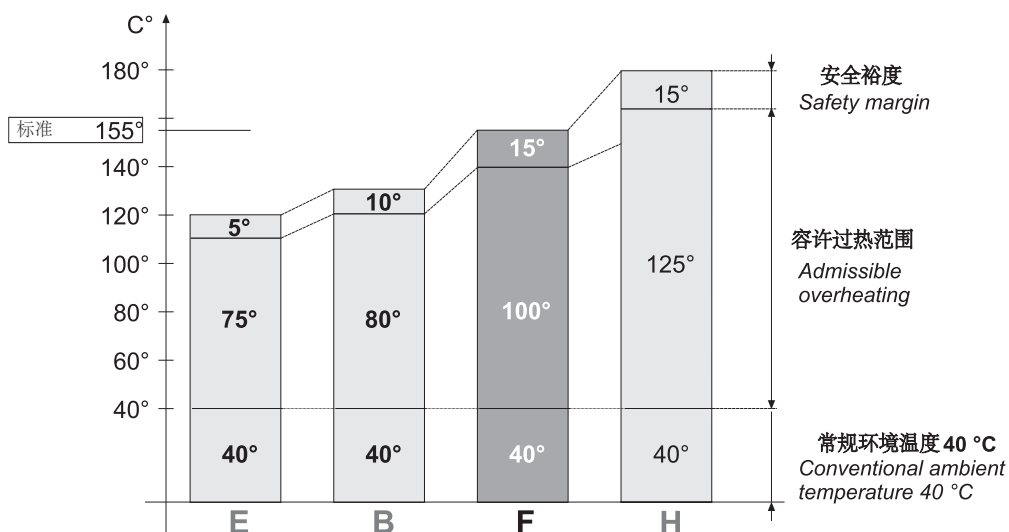
绝缘等级

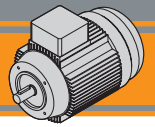
Insulation class

绝缘等级表示在电机（绕组）内部最热点测得的热防护等级。绝缘等级F。

Thermal insulation class indicates the level of thermal protection measured at the hottest point inside the motor (windings). Thermal insulation class F.

等级 Class	最大绕组温度 Max. windings temp.
E	120°C
B	130°C
F	155°C
H	180°C






TS系列 - 60 Hz 电源

Series TS - 60 Hz line power supply

60 Hz操作下的速度、扭矩和额定功率如下表所示:

Speed, torque and rated power in 60 Hz operation is shown in the following table:

	50 Hz	60 Hz
400 V	请见技术参数 / see technical data 	速度 speed $\approx +20\%$ 扭矩 torque $\approx -20\%$ 功率 power \approx 相同 the same
480 V	不允许 / not allowed	速度 speed $\approx +20\%$ 扭矩 torque \approx 相同 the same 功率 power $\approx +20\%$

出线螺套尺寸

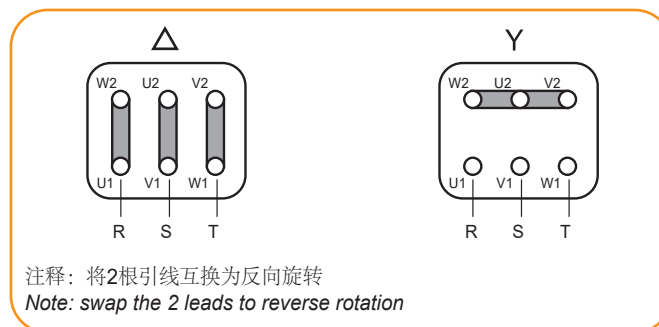
Cable glands data

TS	出线螺套 Cable glands
56	1-M16x1.5
63	1-M16x1.5
71	1-M20x1.5
80	1-M20x1.5
90	1-M20x1.5
100	2-M20x1.5

接线图



Connection diagram

TS - 230 V - 50 Hz (275 V 60Hz) / 400 V - 50 Hz (480 V 60Hz)

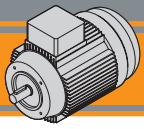


铭牌

Nameplate

 THE MODULAR GEARMOTOR www.transtecnoc.com		 3 ASINCHR. MOTOR	
03 Type	μF		VL
	Serv. S 1	cos φ	
50 Hz.	kW	Δ 220 - 240/380 - 415 Y V	
	rpm	A	
60 Hz.	kW	Δ 264 - 288/456 - 498 Y V	
	rpm	A	
IP 55	Is.cl. F	Kg.OP	





注释 / *Notes*

 **TRANSTECNO SRL**
HEADQUARTERS

Company subject to the management
and coordination of INTERPUMP GROUP SPA
Via Caduti di Sabbiano, 11/D-E
40011 Anzola dell'Emilia (BO)
ITALY
T+39 051 64 25 811
F +39 051 73 49 43
sales@transtecno.com
www.transtecno.com


the modular gearmotor
MEMBER OF INTERPUMP GROUP



 **HANGZHOU INTERPUMP
POWER TRANSMISSIONS CO LTD**
No.4 Xiuyan Road Fengdu Industry Zone
Pingyao Town Yuhang District
Hangzhou City, Zhejiang Province
311115 – CHINA
T +86 571 86 92 02 60
info-china@transtecno.cn
www.transtecno.cn

 **TRANSTECNO IBÉRICA
THE MODULAR GEARMOTOR, S.A.**
Carrer de la Ciència, 45
08840 Viladecans (Barcelona) - SPAIN
T +34 931 598 950
info@transtecno.es
www.transtecno.es

 **TRANSTECNO B.V.**
Siliciumweg 32
3812 SX Amersfoort - NETHERLANDS
T +31(0) 33 45 19 505
info@transtecno.nl
www.transtecno.nl

 **TRANSTECNO AANDRIJFTECHNIEK B.V.**
Siliciumweg 32
3812 SX Amersfoort - NETHERLANDS
T +31 (0) 33 20 47 006
info@transtecnoaandrijftechniek.nl
www.transtecnoaandrijftechniek.nl

 **MA TRANSTECNO S.A.P.I. DE C.V.**
Julián Sepúlveda Dávila #107,
Parque Industrial SG
Apodaca, Nuevo León, CP. 66640
MÉXICO
T +52 8113340920
info@transtecno.com.mx
www.transtecno.com.mx


 **TRANSTECNO USA**
8 Creek Parkway,
Boothwyn PA 19061-8136 - UNITED STATES
T + 1 (610) 4970154

TRANSTECNO USA – WEST COAST BRANCH
14561 Fryelands Blvd SE
Monroe, WA 98272 - UNITED STATES
T +1 360-863-1300
usaoffice@transtecno.com
www.transtecno.com

 **TRANSTECNO CANADA**
51 B Caldari Road Unit 10
Vaughan, ON L4K 4G3 - CANADA
T +1 905 761 0762
canadaoffice@transtecno.com
www.transtecno.com

 **TRANSTECNO INDIA**
#6A, Sipcot Industrial complex, Phase-1, Elasagiri Road
Hosur – 635126 Tamilnadu - INDIA
T +91 4344 274434
M +91 81443 88800

TRANSTECNO INDIA – NORTH BRANCH
Plot No: 3 A, Sector 2, IIE, Sidcul, Pantnagar
U.S. Nagar, Uttarakhand – 263153 - INDIA
indiaoffice@transtecno.com
www.transtecno.com

 **TRANSTECNO BRAZIL**
Rua Gilberto de Zorzi, 525 Forqueta - CEP. 95115-730
CX Postal 3544 Caxias do Sul RS – BRAZIL

TRANSTECNO BRAZIL – SÃO PAULO BRANCH
R. Mafalda Barnabe Soliane, 314 – CEP. 13347-610
Indaiatuba, São Paulo - BRAZIL
T +55 19 3437 2520

TRANSTECNO BRAZIL – PORTO ALEGRE BRANCH
Rua Dr. Freire Alemão 155 / 402 - CEP. 90450-060
Auxiliadora Porto Alegre RS - BRAZIL
T +55 51 4042 0916
M +55 51 811 45 962
braziloffice@transtecno.com
www.transtecno.com.br

 **INTERPUMP ANTRIEBSTECHNIK GMBH**
Büro Stuttgart - GERMANY
T +49 (0)171 4781909
germanoffice@transtecno.com
www.transtecno.com

 **SALES OFFICE OCEANIA**
Unit 5, 12 Nyholt Drive, Yatala 4207
Queensland - AUSTRALIA
T +61 07 3800 0103
M +61 04 38060997

UNIT 9, 94 Boundary Rd, Sunshine West 3020
Victoria - AUSTRALIA
T +61 9312 4722
oceaniaoffice@transtecno.com
www.transtecno.com.au