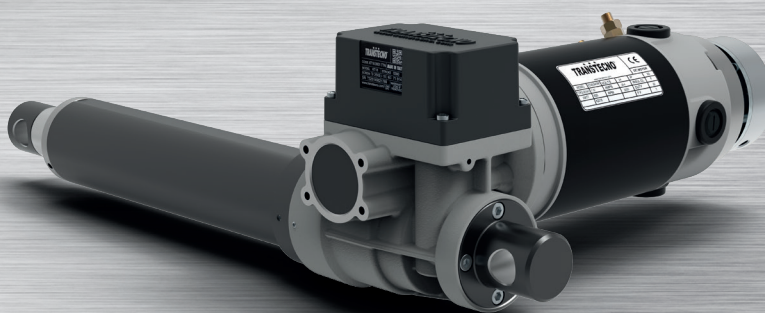
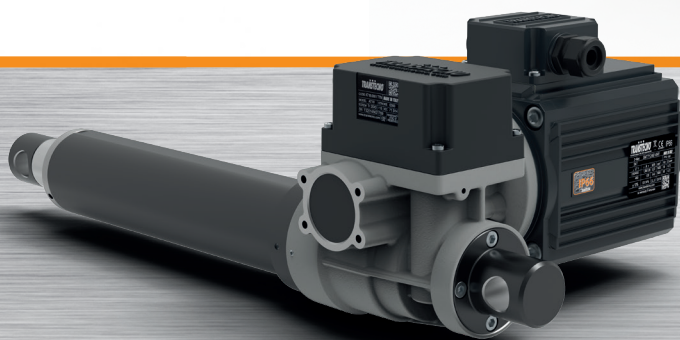
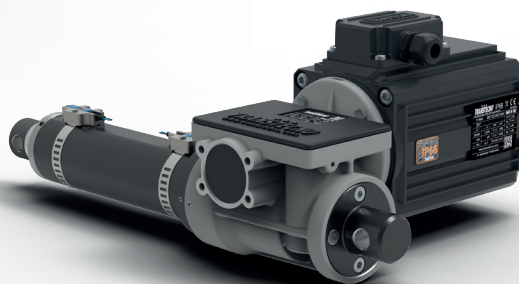
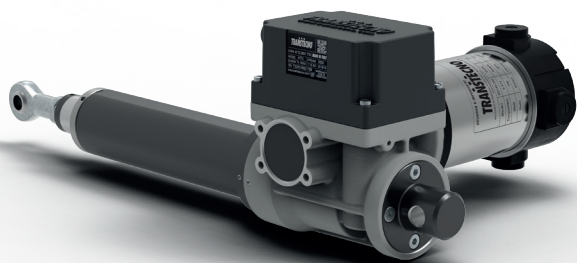


TRANSTECNO[®]
the modular gearmotor

Linear
Actuators

AT SERIES



NEW



Caratteristiche tecniche

Technical features

Gli attuatori lineari sono dispositivi che trasformano il moto rotativo di un motore elettrico in un moto traslante lineare. Gli attuatori lineari sono composti da un riduttore a vite senza fine collegato a una coppia vite – madrevite. Quest'ultima, se vincolata alla rotazione, realizza il movimento lineare con una forza proporzionale alla potenza installata del motore.

I motori elettrici utilizzabili possono essere asincroni trifase, monofase o a corrente continua. Il vantaggio degli attuatori lineari rispetto ai cilindri pneumatici ed oleodinamici consiste nel permettere arresti anche in posizioni intermedie della corsa senza particolari accorgimenti.

Caratteristiche principali degli Attuatori Lineari AT:

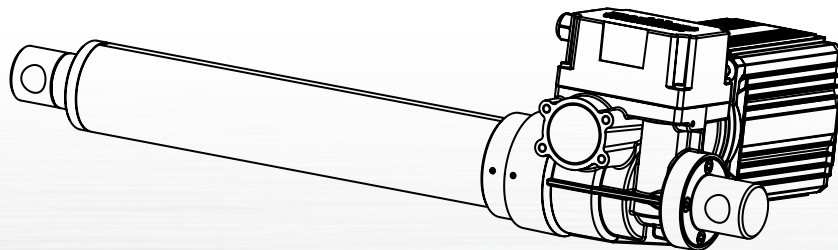
- Carcasa riduttore in alluminio pressofuso.
- Ingranaggio a vite senza fine con vite in acciaio cementato temprato e rettificato (16MnCr5) e ruota in bronzo G-CuSn12.
- Vite trapezia con filettatura ISO 2901...2904 in acciaio C45 rullato.
- Asta traslante in acciaio cromato.
- Tubo di protezione con specifico profilo dall'alluminio estruso e anodizzato.
- Flange motore in accordo con standard IEC B14 e B5.
- Disponibili con fine corsa meccanico e con fine corsa magnetici.

Linear actuators are devices that convert the rotary movement of an electrical motor into a linear translating motion. The linear actuators consist of a worm gearbox coupled with a trapezoidal screw. If the latter is constrained to rotary motion then it creates the linear movement, with a force that is proportional to the motor input power.

The electrical motors that can be used may be three-phase, single phase asynchronous or DC. The advantage of linear actuators compared to pneumatic or hydraulic cylinders is based on the possibility to stop the rod in intermediate positions without any difficulty.

Main features of AT Linear Actuators range:

- *Die-cast aluminum housing*
- *Ground hardened worm gear (16MnCr5) and G G-CuSn12 bronze wheel*
- *Acme screw according to ISO 9001...9004 in C45 rolled steel*
- *Chromed steel translating rod*
- *Protection tube with specific profile from extruded and anodized aluminum*
- *Motor flanges in accordance with IEC B14 and B5 standards*
- *Available with mechanical rotary limit switch and with permanent magnets rotary limit switch*



Taglie Disponibili / *Sizes available*

AT06 - AT12 - AT18

Dati prestazionali

Performance data

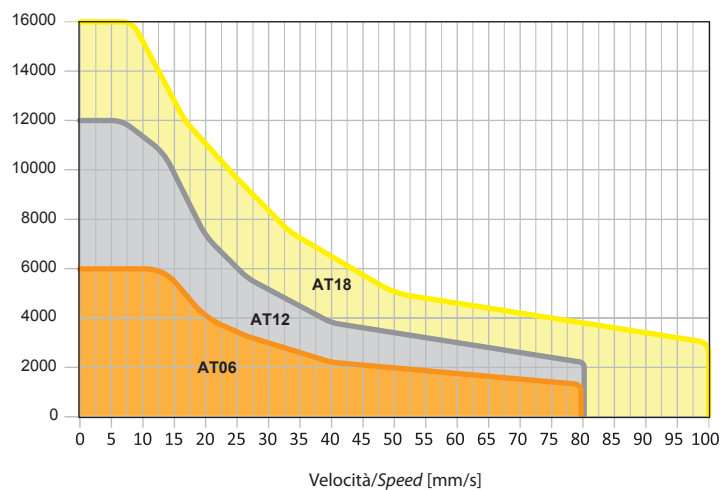
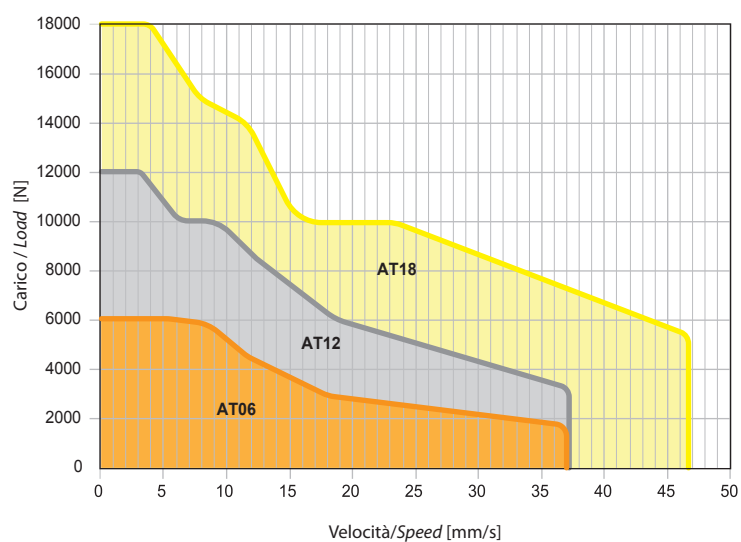
Taglia/Size	Prestazioni/ Performance data	
AT06	Carico dinamico max / Max. dynamic load [N]	6000
	Velocità/Speed [mm/s]	da 3 a 80 / from 3 to 80
AT12	Carico dinamico max / Max. dynamic load [N]	12000
	Velocità/Speed [mm/s]	da 3 a 80 / from 3 to 80
AT18	Carico dinamico max / Max. dynamic load [N]	18000
	Velocità/Speed [mm/s]	da 4 a 100 / from 4 to 100



Motori AC / AC Motors



Motori DC / DC Motors



 **TRANSTECNO SRL
HEADQUARTERS**

Company subject to the management
and coordination of INTERPUMP GROUP SPA
Via Caduti di Sabbiano, 11/D-E
40011 Anzola dell'Emilia (BO)
ITALY
T+39 051 64 25 811
F +39 051 73 49 43
sales@transtecno.com
www.transtecno.com


the modular gearmotor

MEMBER OF INTERPUMP GROUP





 **HANGZHOU INTERPUMP
POWER TRANSMISSIONS CO LTD**
No.4 Xiuyan Road Fengdu Industry Zone
Pingyao Town Yuhang District
Hangzhou City, Zhejiang Province
311115 – CHINA
T +86 571 86 92 02 60
info-china@transtecno.cn
www.transtecno.cn

 **TRANSTECNO IBÉRICA
THE MODULAR GEARMOTOR, S.A.**
Carrer de la Ciència, 45
08840 Viladecans (Barcelona) - SPAIN
T +34 931 598 950
info@transtecno.es
www.transtecno.es

 **TRANSTECNO B.V.**
Siliciumweg 32
3812 SX Amersfoort - NETHERLANDS
T +31(0) 33 45 19 505
info@transtecno.nl
www.transtecno.nl

 **TRANSTECNO AANDRIJFTECHNIEK B.V.**
Siliciumweg 32
3812 SX Amersfoort - NETHERLANDS
T +31 (0) 33 20 4 7 006
info@transtecnoaandrijftechniek.nl
www.transtecnoaandrijftechniek.nl

 **MA TRANSTECNO S.A.P.I. DE C.V.**
Av. Mundial # 176, Parque Industrial
JM Apodaca, Nuevo León,
C.P. 66633 - MÉXICO
T +52 8113340920
info@transtecno.com.mx
www.transtecno.com.mx


 **TRANSTECNO USA**
8 Creek Parkway,
Boothwyn PA 19061-8136 - UNITED STATES
T + 1 (610) 4970154

TRANSTECNO USA – WEST COAST BRANCH
14561 Fryelands Blvd SE
Monroe, WA 98272 - UNITED STATES
T +1 360-863-1300
usaoffice@transtecno.com
www.transtecno.com

 **TRANSTECNO CANADA**
51 B Caldari Road Unit 10
Vaughan, ON L4K 4G3 - CANADA
T +1 905 761 0762
canadaoffice@transtecno.com
www.transtecno.com

 **TRANSTECNO INDIA**
#6A, Sipcot Industrial complex, Phase-1,Elasagiri Road
Hosur – 635126 Tamilnadu - INDIA
T +91 4344 274434
M +91 81443 88800

TRANSTECNO INDIA – NORTH BRANCH
Plot No: 3 A, Sector 2, IIE, Sidcul, Pantnagar
U.S. Nagar, Uttarakhand – 263153 - INDIA
indiaoffice@transtecno.com
www.transtecno.com

 **TRANSTECNO BRAZIL**
Rua Gilberto de Zorzi, 525 Forqueta - CEP. 95115-730
CX Postal 3544 Caxias do Sul RS – BRAZIL

TRANSTECNO BRAZIL – SÃO PAULO BRANCH
R. Mafalda Barnabe Soliane, 314 – CEP. 13347-610
Indaiatuba, São Paulo – BRAZIL
T +55 19 3437 2520

TRANSTECNO BRAZIL – PORTO ALEGRE BRANCH
Rua Dr. Freire Alemão 155 / 402 - CEP. 90450-060
Auxiliadora Porto Alegre RS - BRAZIL
T +55 51 3251 5447
M +55 51 811 45 962
braziloffice@transtecno.com
www.transtecno.com.br

 **INTERPUMP ANTRIEBSTECHNIK GMBH**
Büro Stuttgart - GERMANY
T +49 (0)171 4781909
germanoffice@transtecno.com
www.transtecno.com

 **SALES OFFICE OCEANIA**
Unit 5, 12 Nyholt Drive, Yatala 4207
Queensland - AUSTRALIA
T +61 07 3800 0103
M +61 04 38060997

 **UNIT 9 , 94 Boundary Rd, Sunshine West 3020
Victoria - AUSTRALIA
T +61 9312 4722
oceaniaoffice@transtecno.com
www.transtecno.com.au**